



**HOUSTON
AREA
CHAPTER**

Maximize Your Membership

Welcome and Introductions

- ▶ Name
- ▶ Professional background and current employment
- ▶ Are you new to MPI or are you a returning member?

Objectives

- ▶ The Houston Area Chapter
- ▶ Global Resources
- ▶ Connect and Networking Opportunities
- ▶ Get Involved - Volunteerism

Current Demographics

(as of 2/1/2023)

- ▶ 146 members
 - ▶ Planners: 79
 - ▶ Suppliers: 67
 - ▶ Students: 2

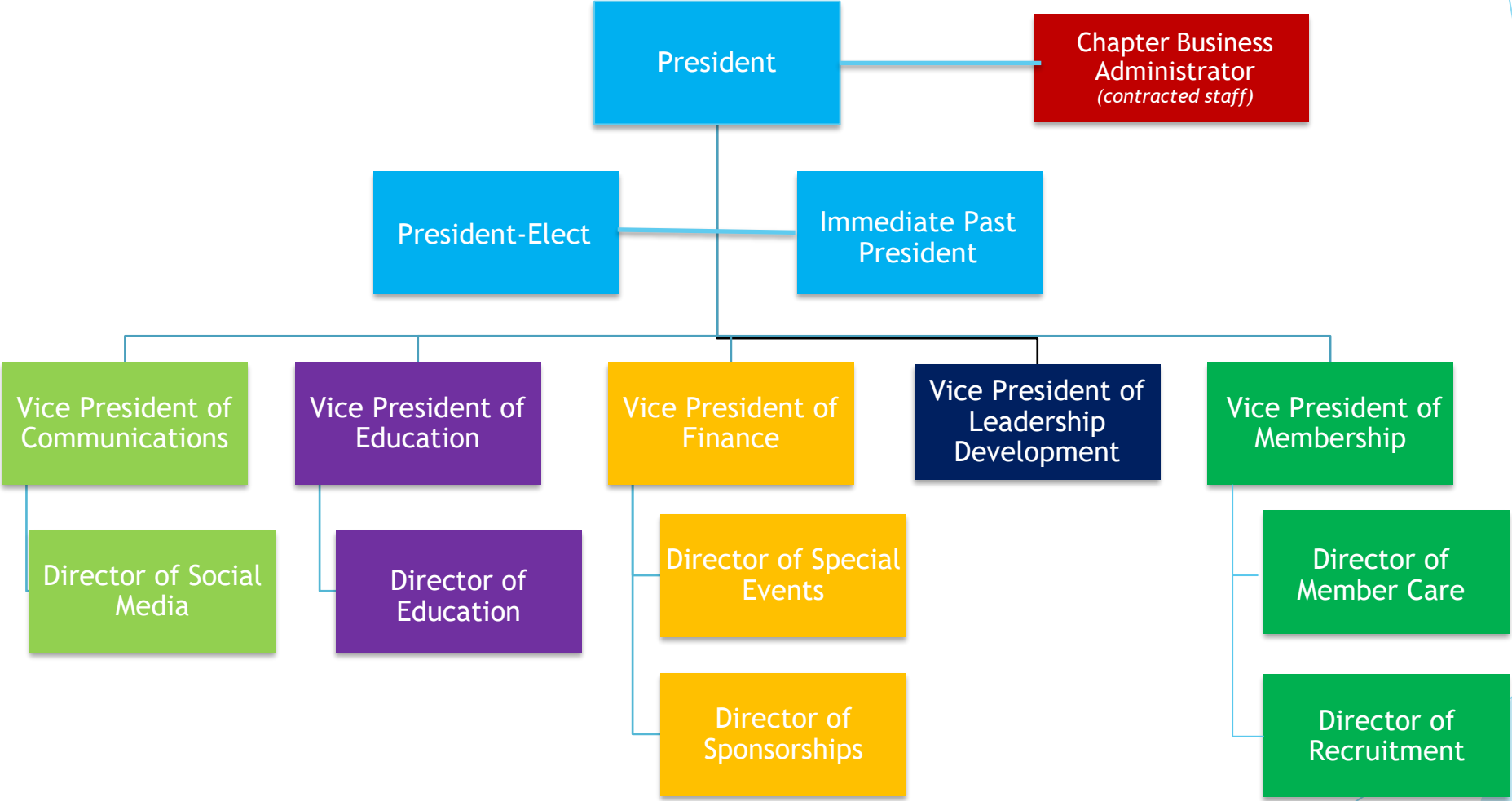
The Houston Area Chapter



MPI

2022 CHAPTER AWARD
TOP PERFORMING

MPI-HAC Board Structure



MPI-HAC Programs and Events

- ▶ CAP'D Educational Programs: 6 annually (CEU credits)
- ▶ Special Events:
 - ❖ November Holiday Mixer
 - ❖ Houston Rodeo Kick-off Social
 - ❖ Behind the Scenes at NCAA Men's Final Four
 - ❖ Global Meetings Industry Day
 - ❖ A Night Among The Stars Gala
 - ❖ Diversity, Equity & Inclusion
- ▶ Partnership events/programs with other industry partners (PYM, ILEA, NACE)
- ▶ Ambassador Program
- ▶ Member Focus Groups
- ▶ Delegation to World Educational Congress (WEC) annually

Chapter Communications



Social Media -

- ▶ Industry News
- ▶ MPI-HAC Program and Event Announcements
- ▶ Member Spotlights
- ▶ Member News

Chapter Website -

- ▶ About the Chapter and the Board
- ▶ Upcoming Programs
- ▶ How to Get Involved
- ▶ Sponsorship & Advertising Opportunities
- ▶ Chapter Photo Albums

Chapter Emails -

- ▶ Program invites/announcements
- ▶ Member E-Blasts

MPI-HAC Scholarships, Sponsorships and Awards

- ▶ MPI-HAC Cares Scholarships
- ▶ Sponsorships and Advertising
 - ❖ CAP'D Educational Luncheons
 - ❖ Special Events
 - ❖ General Sponsorships
 - ❖ Website and Social Media Advertising Opportunities
- ▶ Member Recognition and Awards

Networking Opportunities

- ▶ Attend CAP'D Luncheons
- ▶ Assist with and attend Special Events
- ▶ Volunteer for a committee
- ▶ Use social media to meet new colleagues and connect with current ones

Get Connected!

Global Resources

- ▶ Membership Profile
- ▶ Your MPI Global Membership permits you to attend meetings with other chapters when visiting
- ▶ Scholarship Opportunities
- ▶ MPI Academy
- ▶ My MPI Online Forum and Communities
- ▶ Planner, Supplier, Student Resources
- ▶ Hosted Buyer Program

Global Resources At A Glance

MPI Member Benefits

- ▶ MPI Online Forum
- ▶ MPI Communities
- ▶ Planner, Supplier and Student Resources

<https://www.mpi.org/membership/benefits>

MPI Academy

- ▶ On Demand Education
- ▶ Webinars
- ▶ Certificate Courses

<https://www.mpi.org/education/mpi-academy>

Hosted Buyer Program

www.mpi.org/events/hosted-buyer

Connect With Industry Peers Worldwide

- ▶ MyMPI Online Forum
- ▶ MPI Communities
- ▶ Member and Chapter Directories
- ▶ MPI Exchange (face-to-face networking)
- ▶ MPI In Person Events

All of the above is located at:
www.mpi.org/membership/benefits

**Broader
Connection
Opportunities**

Get Involved! Volunteerism

What Volunteers LOVE!!

- ▶ Making a difference
- ▶ Supporting an organization or cause
- ▶ Learning new skills
- ▶ Feeling valued
- ▶ Meeting new people

Volunteer Opportunities



Through the Chapter:

- ▶ Committee Descriptions and Open Committee Positions
<https://www.mpi.org/chapters/houston-area/get-involved/committees>
- ▶ Find Your Fit Survey
- ▶ Board of Directors Opportunities
<https://www.mpi.org/chapters/houston-area/get-involved/join-the-board-of-directors>

Through MPI Global:

- ▶ Global International Committees:
volunteerexperience@mpi.org

*Contact the VP of Leadership Development at
mpihac@att.com for current opportunities*

Where Do I
Volunteer?

Getting Started

- ▶ Establish and complete your online profile at www.mpi.org
- ▶ Complete the Member Spotlight Questionnaire that came in your Chapter Welcome Letter and submit your information to mpihac@att.net for social media posting
- ▶ Set-up an account with Events Industry Council (EIC) to record Continuing Education Unit (CEU) credit hours at www.eventscouncil.org
- ▶ Complete a Find Your Fit survey: [Volunteer Interest Form Link](#)
- ▶ Connect with your Ambassador

For More Information:

- ▶ Chapter Website: <https://www.mpi.org/chapters/houston-area>
- ▶ MPI Global Website: <https://www.mpi.org>
- ▶ Questions? Contact us at mpihac@att.net to connect with representatives from:
 - ❖ Membership Team
 - ❖ Communications Team
 - ❖ Education Team
 - ❖ Leadership Team

All of our volunteers are here to help you make the most of your MPI experience, by connecting via email through the above address, your inquiries will be directed to the appropriate volunteer leaders.



Questions???