



# METROPLEX CHAPTER CURRENT

## Great Metroplex Delegation

A large and enthusiastic delegation from the Metroplex Chapter went to Philadelphia for the MPI Annual Meeting. A partial list of attendees appears elsewhere in this issue.

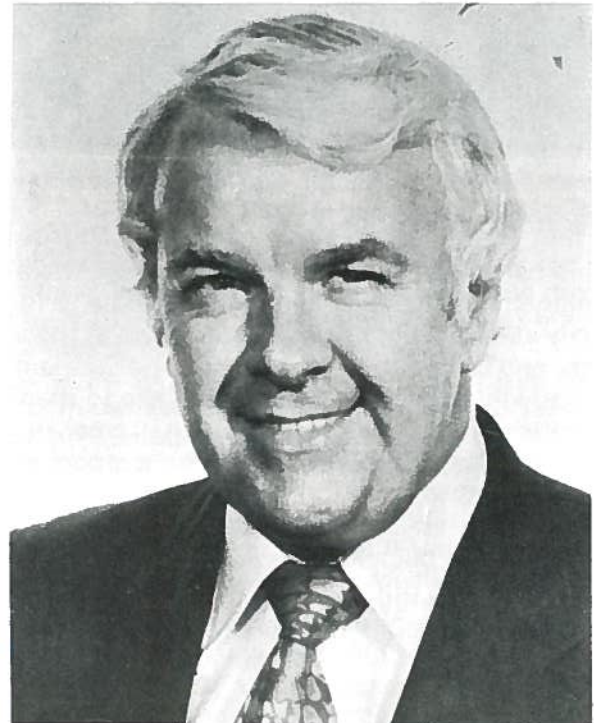
Outgoing International Director, George Gallagher, was elected as Vice President in charge of Communications for a one year term on the Executive Committee of MPI. The election of Gallagher is significant in that this is the first time that a member of the Executive Committee has come from the Metroplex Chapter. International Director elect, Charlotte St. Martin, assumed her seat on the International Board of Directors as of the close of business at the Annual Meeting. International Director, Ron Trammell, continues to serve the Board and has one year remaining in his term. Outgoing International Director, Bill Masheter and George Gallagher, received certificates thanking them for their service to the Board.

At the final meeting of the International Board of Directors of MPI, Stu Clarkson, outgoing President, became Chairman of the Board. Bob Green from Ralston Purina Company in St. Louis was elected President. The three vice presidents elected were Jim Rubenstein of Loews Monte Carlo Hotel, Rudy Wright from Rockwood Investment Company and the Metroplex Past-President, George Gallagher, from the Foundation Drilling Contractors Association. Secretary-Treasurer was Howard Feiertag from American Motors Inn.

Some of the highlights of the meeting were that the Meeting Planners International organization had reached a membership level as of the Annual Meeting of approximately three thousand and thirty members. This represents a fantastic growth over the last three years. The total membership at the present breaks down into fifty-six percent planner members; forty-three percent supplier members. There was some concern expressed by the Board of Directors about the imbalance of attendees at meetings. At the Spring Meeting and Fall Meeting apparently supplier/members are showing up on a ratio of sixty percent to forty percent planners. The consensus of the Board was that something would have to be done in the future to up the planners' attendance.

The financial condition of Meeting Planners International was very favorable for the past twelve months as reported to the Board of Directors.

*(Continued on Page 3)*



## The Mystery of Wine

*by George Gallagher*

*Our speaker for the July meeting will attempt to solve some of the mysteries surrounding wine. The consumption of wine at meetings and conventions and generally by the public, has grown tremendously over the last fifteen years to the point where one particular white wine now has replaced the martini as the most favored drink in America. Our speaker will attempt to group all wines into four basic categories for easy understandability and will demonstrate through numerous tastings what to look for in your favorite wine. You will also learn the best wines to choose for various dishes that are being served at a meeting or a convention. The Anatole Hotel will compliment the wine tasting with cheese and bite-size snacks during the wine tasting. Following the wine-tasting and the regular monthly meeting of the Chapter, an elegant dinner will be served. Other details regarding the meeting are found on the back page of this issue.*

# Thanks to the Outgoing Execu



President, Charlotte St. Martin



Treasurer, Dick Schein



Program, Harmon Hodge



Sites, Evelyn Flores

## Letter from the President:

This being my last official letter to you, there are so many things to say and so many people to thank. This newsletter is in itself a tribute to all of those officers and committee chairmen who worked so diligently this year, but I would also like to thank all committee members and everyone else in the Metroplex Chapter this year for their support of our chapter.

Fortunately for me, it has been a very easy and rewarding year because I have been blessed with a very fine set of officers and committee chairmen. Since I cannot thank each of you individually, please accept this as my thanks to you.

Next year's slate of officers should provide you with an even more outstanding year of activities and I know you will give them the same support you extended to me.

Sincerely,

*Charlotte*

Charlotte St. Martin

### Metroplex Chapter Members that attended Philadelphia Meeting:

Suzie Oliver  
Greg Elam  
George Gallagher  
Ron Trammell  
Regina Arnold  
Kathy Clark  
Bruce Jaster  
Earl Bauer  
Ted Olson  
Mike Stajdel  
Nita Sisul  
Sally Gibbons  
Bill Boyd  
Sydney Nash  
Jim Mills

Charlotte St. Martin  
Marilyn McGuire  
Terry McKeon  
Ellen Beckert  
Anne Lawrence  
Mickey DeVito  
Rick Alexander  
Phil Davis  
Tony DiRaimondo  
Barbara Boykin  
Patty Watson  
Scott Walker  
Judy Thee  
Stan Butler  
Gary Wisinski

## Your Help Is Needed

### \$5.00

Your chapter needs your help to meet unusually large expenses. Please plan on contributing \$5.00 to help offset these costs.

Please mail your check to:

**Dick Schein — MPI Metroplex Chapter**  
**P.O. Box 25104 • Dallas, Texas 75225**

In response to this ad that appeared in last month's **CURRENT**, eighteen Chapter members donated \$115.00 to the treasury.

Thanks to:

Bascom Lynn  
George Gallagher  
Judy Thee  
Marilyn McGuire  
Bill Mahaffey  
Harmon Hodge  
Mickey DeVito  
Karen Schifelbein  
Charlotte St. Martin  
Ada Nell McComas  
Ben Bold  
Evelyn Flores  
Bill Masheter  
Suzie Oliver  
Roy Reynolds  
Earl Bauer  
Dick Schein  
Greg Elam

Securities Mkg.  
ADSC  
Ray Block Prod.  
Texas Credit Union  
Delta Airlines  
Southwestern Life  
AMFAC  
AMFAC  
Loews Anatole  
Paul Orborne Assoc.  
Bold Incentives  
Dallas Market Ctr.  
Bauer A/V  
Dallas Conv. Bureau  
Bauer A/V  
Bauer A/V  
American Heart  
Great American

If you didn't help out last month, please take the time to write a check now. We need your help.

Thanks!  
Chapter Officers

# ive Committee



Membership, Marilyn McGuire



Communications, Ruth Larsen

## WHO SHOT J.R.???

The fifty-seven Chapter members and guests that attended the July 20th meeting of the Metroplex Chapter at the Hilton LBJ were treated not only to a terrific cocktail hour, delicious luncheon and interesting lecture - but also the thrill of stepping over TV cables and seeing some members of the "Dallas" cast and crew working on a segment in Sadie's.

Tom Yorke, our host from the Hilton LBJ, announced at the meeting that the cast of "Dallas" would be staying at his hotel about six weeks while completing some shooting in this area.

Our guest speaker for the meeting, Ted Dreier, (by the way, an extra in "Dallas") made a most interesting presentation on how to deal with irate people. No question about it - suppliers and planners now know the secret. Now, if he could just teach J.R. how to handle irate people - or better still, the guy (or gal) that shot him.

Thanks to the Hilton LBJ for their hospitality and fascinating afternoon at the ranch.

## Installation of Officers - July 31st

Our new Metroplex Chapter officers will be installed at special ceremonies in conjunction with our dinner meeting on July 31st at the Anatole. If you have not volunteered to be of assistance to the Chapter for the coming year, now is the time to call:

### President:

Greg Elam, *Great American Reserve*

### Vice President of Membership Involvement:

Harmon Hodge, *Southwestern Life Insurance*

### Vice President of Programming and Education:

Tony DiRaimondo, *Fairmont Hotel*

### Vice President of Finance:

Dick Schein, *American Heart Association*

### Vice President of Administration:

Suzie Oliver, *Dallas Convention & Visitor's Bureau*

## Great Metroplex Delegation (Continued from Page 1)

There was some concern about the growth of MPI through the Chapter system. The Board of Directors, with twenty-five chapters right now, numbers fifty and the Executive Committee of five makes a total of fifty-five. In the future, if we were to add five or ten new Chapters, the growth of the Board of Directors would increase proportionately on the basis of two directors per Chapter. There was a lively discussion both pro and con on the subject. The new President, Bob Green, appointed a task force of eight MPI members with four coming from the supplier side and from the planner side, two of the planners from associations and two from the corporate makeup, and included our new Vice President, George Gallagher, representing the association side. The duty of the task force will be to get together and study various methods of future growth on the Board of Directors. The task force will look at all aspects of future growth.

The newly elected President, Bob Green, said that his administration would concentrate in three areas. First, he wanted to see the MPI Educational programs improved. Secondly, he wanted better communications between MPI headquarters and the members in the field, and particularly to the Chapters. Third, he wanted the membership drive to continue to bring in new members and to upgrade the professionalism of the organization.

There are some new regulations approved by the Board on transfer of supplier group memberships. A study on hosted functions convinced the Board to leave the hosting of functions the way it is set up right now. There was some discussion about non-MPI members hosting functions such as the City of Philadelphia had done. The Board also set up a past-president's Council to act as an advisory group to the Executive Committee and to the Board of Directors. Other pieces of business finalized the 1982 Annual Conference would be held in Denver, Colorado at the Marriott and Fairmont Hotels, acting as headquarter hotels. The 1983 Annual Conference will be held in St. Louis with Stouffer's Riverfront Hotel acting as headquarters. The 1983 Fall Conference will be held in San Francisco with the Fairmont Hotel acting as headquarters hotel. The 1984 Annual Conference will be held in Washington, D.C. with the Sheraton Washington Hotel as headquarters. The 1984 Fall Conference will be held in Houston, Texas with the Shamrock-Hilton acting as headquarters hotel.

The meeting in Philadelphia was certainly innovative and interesting. The concensus of the Texas delegation was that it came pretty close, but did not surpass the Annual Meeting held in Dallas, Texas in June of 1979. Registrations of delegates in Philadelphia were approximately the same number as the attendance in Dallas, even though the organization had grown by another five hundred members. The educational sessions at the MPI conference were certainly interesting, generally speaking, and informative. There were good and critical comments made on the Interface session held at Philadelphia, and it was felt that the Executive Committee of MPI certainly has to take a look at improving Interface even more for the future. Our Metroplex Chapter delegation were in evidence everywhere throughout the meeting.

# JULY METROPLEX CHAPTER MEETING

DATE: THURSDAY, JULY 31, 1980

PLACE: Loews Anatole Dallas  
Stemmons at Industrial  
Monte Carlo Room

TIME: 7:30 p.m.

COST: \$15.00 per person

PROGRAM: "The Mystery of Wines"  
Speaker: George Gallagher

*A/so:* The Installation of our  
new officers for 1980-81.



The usual high-level educational programs held monthly by our Chapter will be replaced this month by an exceptionally high-level entertaining and somewhat educational (but definitely taste-provoking) session on wines.

George Gallagher, our newly elected MPI Vice President for Communications, has consented to share his expertise on the "fruit of the vine" with the Metroplex members. This is an opportunity to bring prospective members, guests and spouses to a most enjoyable meeting. Once and for all, this great mystery will be solved.

Firm reservations are a MUST for this meeting no later than noon on July 29th. Please call Lynn in Charlotte St. Martin's office at the Anatole (748-1200).

MPI Metroplex Chapter  
P. O. Box 25104  
Dallas, Texas 75225

**DEADLINE FOR RECEIVING RESERVATIONS: TUESDAY, JULY 29th**

You may call your reservation in to Lynn McDaniel (748-1200) by Tuesday noon.

Please make \_\_\_ Reservations for the July Metroplex Chapter Luncheon. The following will attend:

Name \_\_\_\_\_

Company \_\_\_\_\_

Name \_\_\_\_\_

Company \_\_\_\_\_

The cost for the evening is \$15.00 per person and may be paid at the door. If you prefer, you can pre-pay by sending your check in the proper amount payable to MPI Metroplex Chapter along with this reservation blank.