

CURRENT

Meeting Planners International

December 1993

Dallas-Fort Worth Chapter

President's Message

D/FW-Directed CMP Review a Success for Italia Chapter

By Lesley Meyer, CMP
Sunbelt Motivation & Travel, Inc.

A high priority in the Gemelli Project—the adoption of the MPI Italia chapter as our “twin chapter,” was sharing technical and educational resources with the Italians. To that end, members of the D/FW chapter visited Italy recently to conduct a CMP review for 13 Italia chapter members.



Lesley Meyer, CMP

The CMP exam was given for the very first time in Rome on Dec. 4. Of the 13 Italians who sat for the exam, 12 took advantage of the European location. Dr. Vito Marzo, president of the Italia chapter, sat for his exam in Anaheim in conjunction with the Professional Education Conference.

Colleen Albert, CMP (Dallas Convention & Visitors Bureau) and Dorritt Turner (Yellow Rose Touring/Special

Events) conducted a full two-day review Nov. 8-9 prior to BTC, the largest European trade conference, in Florence, Italy.

After BTC, which they also attended, the two spent a few days taking in the sights before returning to Dallas Nov. 14.

We are truly off and running with the Gemelli Chapter project. *Togeher Everyone HAS Achieved More!* What a TEAM our chapters make!

This issue of Current is sponsored by

**Holiday Inn
Crowne Plaza, Atlanta
City of Arlington, TX**

MPI

MEETING PLANNERS INTERNATIONAL®

December D/FW Chapter Meeting

Annual Holiday Celebration

featuring

*Dave “Elvis” Tapley and
the Cavalcade of Stars*

December 16, Thursday

Doubletree Hotel at Lincoln Centre

*8250 N. Central Expressway
Dallas, Texas 75206
214-691-8700*

*Orientation 5:30 p.m.
Reception & Registration 6:00 p.m.
Dinner & Dancing 7:00 p.m.*

*R.S.V.P.
by noon, Tuesday, Dec. 14
Sandi or Jennifer
214-343-0555*

*Advance Registration \$30
Late Registration \$40
Guest Registration \$35*

See page 3 for more details and meeting reservation policy.

INSIDE

President's Column

1

December Meeting Info

3

News Briefs

4

Membership News

5

Last Month's Meeting

6

City of Arlington, TX

9

Membership Update

10

Holiday Inn Crowne Plaza

11

CURRENT

Meeting Planners International
Dallas/Fort Worth Chapter

Newsletter Staff

Editor
Gracie Hatfield Hilton
The Write Stuff
Phone & FAX
metro 817-467-7439

Vice President/Public Relations

Steve Kemble
Steve Kemble Event Design
Phone: 214-943-5949
FAX: 214-943-2811

Advertising Chair
Stephanie Davis
Sheraton Park Central Hotel
Phone: 214-851-2016
FAX: 214-991-4557

Photographer
Mark Lazarow
Mark Lazarow Photography
214-380-0985
FAX: 214-380-1431

CURRENT is published 12 times yearly for the D/FW Chapter of Meeting Planners International, the industry's leading educational and networking resource in meetings management. Statements of fact and opinion are the responsibility of individual writers and do not imply collective opinion of the officers or members of MPI.

CURRENT Deadlines

Upcoming deadlines for copy and ads for the D/FW MPI chapter newsletter, the **CURRENT**, are as follows:

ISSUE	DEADLINE
January '94	Dec. 10, Friday
February '94	Jan. 14, Friday
March '94	Feb. 18, Friday
April '94	March 18, Friday

Please mail or FAX copy to Gracie H. Hilton, **CURRENT** Editor, 3020 Glasgow Court, Arlington, TX 76015, phone & FAX: (metro) 817-467-7439.

Copy is cheerfully accepted early. *Because of production schedules, information received after 5 p.m. on the deadline day will not be included in the newsletter in progress.* Late-arriving copy will be included in the next month's issue, if information is still timely.

Upcoming MPI Events

December 16, Thursday
Chapter Holiday Party
Doubletree Campbell Centre*
6:00 p.m./Dinner
***NOTE: Change of Venue!**

January 11, Tuesday
'How-To' Breakfast
Omni Mandalay
7:30 a.m.

January 27, Thursday
Chapter Meeting
Dallas World Aquarium
11:30 a.m./Lunch

February 1, Tuesday
'Brown Bag' Luncheon
Doubletree Lincoln Centre
11:30 a.m.

February 6, Sunday
Fundraising Benefit
Medieval Times Dinner & Tournament
2:00 p.m.

February 8, Tuesday
Richland College
Internat'l Mtg. Planning Classes Begin
(continues through Tuesday, 3/8)

February 14, Monday
Richland College
Basic Mtg. Planning Classes Begin
(continues through Sunday, 4/17)

February 24, Thursday
Chapter Meeting
Doubletree Park West (Luna)
11:30 a.m./Lunch

NOTE: Chapter meeting plans are subject to change. Check the CURRENT each month to confirm details.

C H A R I T Y

O R N E R

By Mary Lynn Novelli
Sterling Hotel Group

Food & Clothing Drive

The D/FW Chapter of MPI will continue to support the North Texas Food Bank and Trinity Ministry to the Poor. The December meeting will feature a Food & Clothing Drive. Chapter members are encouraged to bring non-perishable foodstuffs—canned goods and dried foods. Also needed are new or gently used clothing for men, women or children, especially blue jeans, coats, and athletic shoes. There is a special need for socks.

Ask your friends, family and co-workers to join in contributing to these worthy charities.

Annual Charity Event

A black tie gala event benefiting Give Kids the World and Love for Kids, the chapter's Annual Charity Event (ACE) will take place on a Saturday evening in March 1994.

Interested in volunteering for the 10-member committee? We need your help! Contact Mary Lynn Novelli, 214-556-2151.

December Meeting Highlights

Ring in the Holiday Season with Industry Associates

By O.D. O'Donnell
Nightlife Talent & Management

'Tis the season to count our blessings and be thankful for health, relationships, and accomplishments.

Don your most festive cocktail attire and ring in the holidays Dec. 16 at the Doubletree Hotel at Campbell Center, 8250 N. Central Expressway at Caruth Haven, Dallas.

NOTE:
The Doubletree Campbell Centre is a change of venue from previously published information!

At this special time of year we look forward to sharing an evening of entertainment and celebration with fellow members, spouses or special guests, and industry associates. Once again the D/FW chapter of

Meetings Planners International invites fellow associates with HSMA, NACE, DFWAE, IAEM and PCMA to join us for this annual holiday event.

The DiGennaro and Stone Duo, courtesy of O.D. O'Donnell (Nightlife Talent & Management) will entertain at the reception, beginning at 6:00 p.m. Dinner will be served at 7:00 p.m.

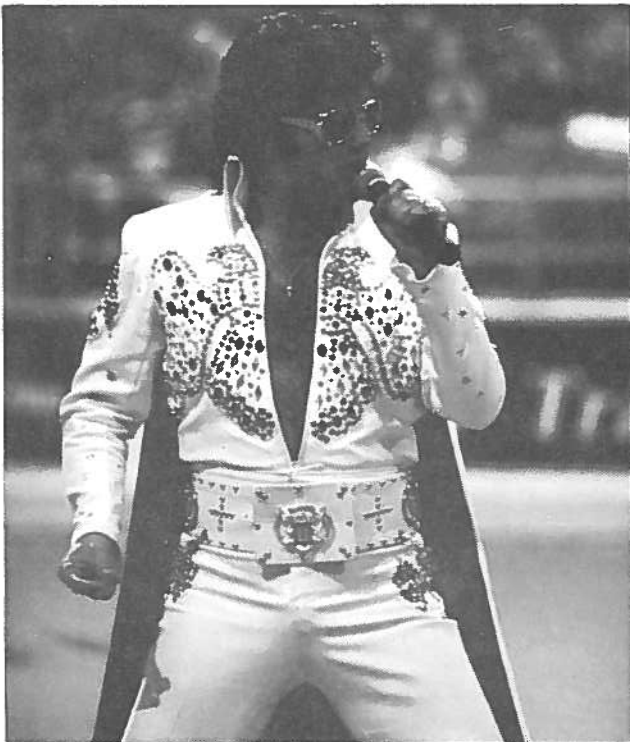
Dave "Elvis" Tapley and the Cavalcade of Stars, also courtesy of Nightlife Talent & Management, will provide music and entertainment for your dancing and listening pleasure. An after-dinner floor show will feature a tribute to some of the world's most famous entertainment personalities.

In the spirit of a safe holiday season the Doubletree offers a special \$45 room rate to all event guests. Make arrangements directly with the hotel reservation desk. Just call 214-691-8700 and identify yourself as an MPI member or guest.

As part of the chapter's annual charity drive, please bring donations of canned goods or clothing to the special containers near registration tables. (See details in *Charity Corner* on opposite page.)

Co-chairs for the November meeting are O.D. O'Donnell (Nightlife Talent & Management), Lisa South, CMP (Ducky Bob's), and Linda Tibbets (AVW Audio Visual). They promise photos with Santa, drawing for prizes, plus lots of other surprises.

Among the hosts at Doubletree Campbell Center are Kevin Gilbert, director of catering; Joe Podson, general manager; Sandi Denton, director of sales and marketing; and Nancy Windrow Pearce, senior sales manager.



Dave "Elvis" Tapley will entertain at the MPI-hosted Holiday Celebration Dec. 16 at the Doubletree Hotel at Campbell Centre.

December Host Facility Doubletree Hotel at Campbell Centre

The Doubletree Hotel at Campbell Centre, situated in the heart of North Dallas across from NorthPark Mall, is just minutes from downtown adjacent to myriad shops, restaurants and nightclubs on Greenville Avenue.

The hotel's 302 guest rooms and suites are highlighted with floor-to-ceiling windows with fabulous views of the city.

The hotel has 14,000 square feet of function space, including the unique, multi-level Encounters on the 21st floor, with magnificent city views. The recreation deck offers tennis, shuffleboard, a putting green, four whirlpool spas and a workout room.

In the spring of 1994 the Doubletree will complete a \$3.5 million renovation of guest rooms and corridors, restaurant, lobby and meeting rooms, transforming the hotel into a "tranquil oasis."

Doubletree Hotel at Campbell Centre is situated at 8250 North Central Expressway at the Caruth Haven exit, just south of Northwest Highway, between the two gold towers.

Parking in the ample front parking lot or two-tier garage is complimentary.

Meeting Reservation & Attendance Policy

Registration fees will be collected at the door; advance payments are not accepted. If paying by check, please have check completed before approaching registration table. Reservations must be made by RSVP deadline for advance registration fee to apply. Late reservations and walk-ins will be accepted on a SPACE AVAILABLE basis. Cancellations must be made by the RSVP deadline. **No-shows will be billed.** Members are responsible for "no-show" charges for their guests. Guests are limited to attending three meetings per year (spouses are an exception).



News Briefs

Chapter News

Spring Richland College Meeting Planning Classes Begin in February

Spring semester classes for the meeting planning courses at Richland College will begin in February. The courses are taught by Certified Meeting Professionals (CMPs) from the D/FW chapter of MPI, plus other industry experts.

The basic course, "Basics of Meeting Planning," begins Feb. 14 and will continue through April 17. The advanced course, "International Meeting Planning," begins Feb. 8 and will continue through March 8.

MPI members interested in instructing or assisting with these courses should contact Sherri Cook, CMP (Sherri Cook & Associates) at 214-732-9396.

To register for either course, call Richland College at 214-238-6144. Professional Growth Awards (PGAs) are available to cover 50% of the course tuition; pick up an application at the Education table at the monthly meeting.

Outstanding Ticket Sellers for February Fundraiser Eligible for Prizes

"Spend a Day with a Knight," a fundraising benefit for the MPI Educational Research Foundation, is off to a great start! Almost 200 tickets were distributed during the October chapter meeting. Our goal is to sell 500 or more tickets.

MPI members and guests will enjoy an afternoon in the Middle Ages at the Medieval Times Dinner & Tournament Sunday, Feb. 6, when the D/FW chapter of MPI presents "Medieval Matinee."

Members excelling in ticket sales will be eligible to win valuable prizes. Members selling 10 or more tickets will be eligible to win two nights at the Santa Barbara Four Seasons Biltmore in Santa Barbara, CA. The drawing will take place at the Dec. 16 chapter meeting; money for the tickets must be in by Monday, Dec. 13, to qualify.

Additional prizes will be given away each month. Members selling 20 or more tickets will become part of the Royal Court and will receive special recognition at the February event.

The member selling the most tickets will win a week's vacation on the island of St. Maarten/St. Martin. This vacation package includes three nights on the Dutch side of the island at Mullet Resort and Casino Bay Hotel, plus three nights at La Samanna on the French side of the island. La Samanna, managed by Rosewood Hotels and Resorts, Inc., was recently featured on "Lifestyles of the Rich and Famous."

Tickets are specially priced for this benefit evening. MPI members and guests may attend for \$25, a savings of 15% off the regular price. Children may attend for \$15.

To purchase tickets call Judy Benaroch, CMP (Sunbelt Motivation & Travel, Inc.), 214-401-0210; Betty Garrett, CMP (Garrett Speakers International, Inc.), 214-513-0054; or Debra Lakin (Worldtravel Trade Shows & Conventions), 214-702-1030, ext. 3822.

Clinical Research Fundraiser for 1995 PEC Temporarily Stalled

A big thank you to all volunteers for the skin care study scheduled as a fundraiser for the 1995 Professional Education Conference. Unfortunately, the manufacturer withdrew the product from testing at this time. We are looking for another opportunity and hope you will volunteer for future studies as they become available.

Take Advantage of Professional Growth Awards!

Did you miss the Professional Education Conference because it was not in your budget? Did the cost of obtaining your CMP keep you from taking the next step in your career? Did you not attend the executive workshop

that addressed a topic pertinent to your organization because of registration fees?

Don't miss out! Take advantage of the many educational opportunities available through the D/FW chapter of MPI.

Professional Growth Awards (PGA) lends a helping hand to members who want to further their careers through these educational sessions.

With the generous donations from monthly raffles, members of the D/FW chapter enable the (PGA) Committee to provide financial support to members who need these funds to take advantage of educational sessions.

For PGA applications, call Kyle Smith (Fairmont Hotel), 214-720-5285. Applications are also available at each monthly meeting.

Other News

HSMAl, Dallas CVB Announce Sales & Marketing Workshops Jan. 20

Mary McCarter, president of the Dallas chapter of HSMAl, reports that the first of the educational workshops now offered by the Dallas Convention & Visitors Bureau as a membership benefit will take place Thursday, Jan. 20, at Loews Anatole.

The premier workshop, co-promoted by HSMAl, will feature sales and marketing techniques.

"Sales & Marketize Your Entire Organization," an all-day workshop for GMs, VPs and CEOs, is \$199.

"Model Marketing Plans," a half-day workshop for directors of sales & marketing is \$69 for members of Dallas CVB.

"Planning + Organizing = Increased Productivity," a half-day workshop for sales executives and managers is \$69 for members of Dallas CVB.

The HSMAl luncheon on Jan. 20 features Philip C. Lee, internationally known for leadership training. Cost of the luncheon is \$25.

For more information contact Karen Avery at the Dallas CVB, 214-746-6626 or Tessa Merrick, HSMAl administrator, 817-329-2001.

DOLLAR\$ & CENT\$ D/FW Chapter/MPI

For the month ending Oct. 31, 1993

Beginning of the Month	\$39,264.33
Income	4,330.84
Disbursements	(9,089.80)
EOM Balance	\$34,505.37*

*includes \$2,018.00 PGA

Report submitted by Carolyn Carey (Allianz Life Insurance Co.), vice president/finance.

MEMBERSHIP QUIZ

Unscramble the letters:

E N E R W

U Y R O

P M S E B M H E I R

(answer on page 10)

Have YOU Attended a Meeting This Year?!

Membership Involvement Committee Urges all MPI Members to Participate in Chapter Activities

By Sherri Cook, CMP
Sherri Cook & Associates

MPI means many things to its members. As chairperson of the Membership Involvement Committee, I am often asked, "Why should I get involved?"

Here are the replies from some of the D/FW chapter members:

"MPI is not only an asset to my work, but the friendship and camaraderie with my peers is priceless to my life," said Karen McCoullough (The Arlington Hilton).

"Membership in MPI has given me far more than I have been able to return," says Pat McCain (The Krisam Group). Being involved is so rewarding. Being active in the D/FW chapter has helped my company, but more importantly, helped me to assist others with contacts and educational issues... and we have fun!"

"My involvement in MPI has expanded my customer base a great deal," says Leslie Pullen (SuperShuttle). "I also enjoy the great friends I have made."

"MPI is a great way to expand your business and meet people. Once you get involved, it is impossible not to develop close friendships. The D/FW chapter is a lot of fun—so get involved and join us," says Kathi Thompson (Inn on the River).

Involvement opportunities in MPI include:

- professional learning interaction with your peers
- educational growth through meeting topics, workshops, brown bag luncheons, Richland College, CMP study, national conferences
- planners recognizing supplier needs and suppliers recognizing planner needs
- industry news through magazines, educational topics and peer interaction
- business contacts for planners assistance and supplier sales opportunities
- personal professional growth opportunities such as working with volunteers, structuring and leading committees, speaking, writing, creating and organizing, community service, public rela-

tions, government and media interaction

- recognition in the industry
- personal satisfaction through achievements and helping others
- development of lifetime friendships

Members of the Membership Involvement Committee are: Carla Durant (Apartment Association of Greater Dallas), Ann Shepherd (GTE Directors), Fred Knieberg, CMP (retired member), Marie Malloy (Doubletree Hotel at Park West), Shari Pierce (Brookhaven Country Club), Skip Williams (Bauer/Southam Audio Visual), Traci Bower (Reunion Ranch), Beverly Autrey (United Group Association), Sally Goldesberry, CMP (American Association of Petroleum Engineers).

Also, Gay Robson (Center for Community Development), Dick Glockner (Southland Center Hotel), Bitsy Burns (HD Vest Financial Services), Kathi Thompson (Inn on the River), Donna Daves (MADD),

Lisa Schillings (Southland Center Hotel), Shelagh Merrill (Four Star Marketing, Inc.), and Linda Hughes (Mobil ETP Technical Center).

These volunteers will be contacting you to talk about your present involvement and assist you in getting more out of your MPI membership. Please take five minutes to respond when they contact you.

Our chapter membership goal is to have every MPI member attend at least one meeting in 1993. Did you know that we still have 203 members who have not yet attended a meeting this year? Your involvement committee representative is willing to meet and escort you at an upcoming meeting. So please check your calendar, pick a date, and plan to attend a chapter meeting.

We all look forward to getting better acquainted with you and professionally growing with you!

Please contact Sherri Cook, CMP, at 214-732-9396, to get involved immediately.

Job Bank Notes

If You Lose Your Job...

Job Change Strategies: The Executive Guide to Job Transition, a book by Robert C. Bruce, will be published in 1994 by NTC publishing Group. Bruce, who has 30 years of experience in career planning and placement, offers the following suggestions:

1. Process what has happened to you. Mourn, grieve, be angry for a couple of weeks. Then pick yourself up, go out and seize the day.
2. Assess yourself. Identify your transferable skills. Take time to figure out who you are, where you want to go, and how to get there.
3. Create a powerful resume and write an effective cover letter.
4. Network. Contact friends, colleagues, neighbors, former employers—everybody—and tell them you are looking for a job.
5. Market yourself. Getting a new job is a sales campaign for your most important product—yourself. Remember, the person who will get the job is the one who is the most skilled at finding the job and interviewing for it.

The Job Bank Committee of the D/FW Chapter of Meeting Planners International has a sixth suggestion: Use the Job Bank! (For more information, see page 8.)

November Meeting Highlights

'Total Quality Management' Featured at November Chapter Meeting



Robert Heckman, director of Marketing Americas for Andersen Consulting, discussed 'Total Quality Management.' Heckman stressed that companies must never be satisfied with the status quo, but should work toward constant improvement in order to provide continuous quality service in today's competitive environment.



Special guest **Sheri Alphonso** announced a gift of \$500 from the Greater New Orleans Convention and Tourist Commission. The money will be given to the MPI Educational Resource Center as a gift from the D/FW chapter.



O.D. O'Donnell (Nightlife Talent & Management Agency), **Nancy Windrow-Pearce** (Doubletree Hotel Campbell Centre) and **Bob Berry** enjoy the pre-meeting reception at the Southland Center Hotel.

Other Nov. Meeting Highlights

- The ongoing food and clothing drive for Trinity Mission for the Poor and the North Texas Food Bank was emphasized. Members are encouraged to bring donations to the December event.
- **Deidre Gordon** (The Kerry Company) donated her specially designed fruit centerpieces to the North Texas Food Bank.
- **Sheri Cook, CMP** (Sheri Cook & Associates) was the recipient of a Personal Growth Award (PGA) scholarship.



Don DeFeo (Meeting Management Festivities), **Sandi Galloway** (Canadian Consulate General), and **Dick Glockner** (Southland Center Hotel) are ready to learn about Total Quality Management, theme of the November meeting.



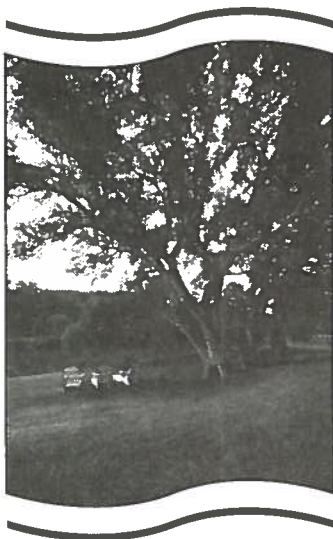
Judy Benaroche (Sunbelt Motivation & Travel, Inc.), center, discusses the upcoming benefit for the MPI Educational Research Foundation with **Robert Jahangiri** (Hair by Robear), and **Patricia Tripp** (Princess Cruises & Tours). The benefit will take place February 6 at Medieval Times and Tournament.

MANY THANKS!

Many thanks to the individuals and companies whose time, talents, and expertise contributed to the enjoyment of the November meeting— •Hosts **Michael Burke**, **Valerie Gabriel Swenson**, **Carol Kallman**, **Dick Glockner** and **Lisa Shillings** of the Southland Hotel •**George Primo** of George Primo Orchestras for the musical entertainment •**Deidre Gordon** of The Kerry Company for providing and donating the centerpieces •**Stephanie Staubach** of Personalities International for arranging for our speaker •Guest speaker **Robert Heckman** of Andersen Consulting for sharing the TQM ideal and its applications, and November meeting co-chairs •**Cindy Hamilton** (Hackberry Creek Country Club), **Phyllis Tackitt** (The Tower Club), **Donna Daves** (The Freeman Companies), •**Traci Bower** (Reunion Ranch) and **Barbara Hitt** (Mobil Oil).

*Meeting Details Reported by
Traci Bower (Reunion Ranch)*

*Photos by
Mark Lazarow Photography*



INN ON THE RIVER

For meeting information and brochures, contact Kathi Thompson at 214-424-7119
205 S.W. Barnard St. • Glen Rose, Tx. 76043 • 817-897-2101 • Fax 817-897-7729

The "Inn" Way to Start the New Year.

Nestled in the trees along the bank of the Paluxy River, the historic Inn On the River has perfected the art of starting the New Year. With an atmosphere that fosters planning, your corporate or personal resolutions are easily made and met.

- State-of-the-Art Conference Center
- Audio and Video Equipment
- Electronically-Controlled Screen
- Fax Machine, Conference Phone, Copier
- 22 Rooms
- Gourmet Meals
- Tranquil and Creative Haven

Heard it through the Grapevine...

By M.T. Gnadt
National Business Association

Congratulations to **Kathy Brook**, *Blue Cross & Blue Shield of Texas, Inc.*, on the birth of Jordan Danielle Palefsky. Kathy's new baby girl was born Oct. 8 and weighed 6 lbs., 6 oz. We hear she has a full head of lovely dark hair!

Diane Smith, CMP, *Alcon Labs*, reached her grandbaby goal of "three in 1993." On Oct. 20 baby girl Olivia Paige was born to Diane's son, Craig and his wife, Kitty. Tayler, born March 24, was the first grandbaby in 1993. Elizabeth Ann arrived on July 12. Smith is now grandmother to three granddaughters!

Mary Lynn Novelli, *Sterling Hotel Group*, is a grandmother. On Nov. 15 grandson Dominic, weighing 8 lbs., 12 oz., was born to Mary Lynn's daughter.

Kimberley C. Mundrone has returned to the Hotel Crescent after maternity leave. On July 16 Alec, 8 lbs., 9 oz., was born.

Former MPI D/FW chapter members **Paul & Lindsey Iacovino** are moving to Sydney, Australia. Paul has accepted a position with the *Four Seasons/Regent Hotels*. Lindsey is a former chapter board member.

Joe Gibbons has returned to the D/FW area as director of sales and marketing for *Medieval Times Dinner and Tournament*. For the past three years he was general manager for a water park in San Juan, Puerto Rico. Prior to that he was director of sales for the Arlington Sheraton (now the Arlington Marriott).

Angela Herrera-Poole is now sales manager for *Plaza of the Americas Hotel*. Her new position includes the Texas association and Dallas corporate markets. She was formerly with the Radisson.

Garrett Schwab is the national sales manager/East Coast for the *Plaza of the Americas Hotel*. He was formerly with Loews Anatole.

Cheryl Lilley is the new meeting planner/convention coordinator for the Association of *Drilled Shaft Contractors*. She was formerly with Cityplace Company.

Keep up with personal news about fellow MPI chapter members—job changes, promotions, awards or special recognitions, weddings, or births—through "Heard it through the Grapevine." Please contact **Mary-Therese Gnadt** (214-991-5381 or FAX 214-960-9149) about items of interest for this column.



Out of a job? Looking for a new challenge? Seeking a qualified applicant to fill a position? Your first stop should be D/FW MPI's Job Bank!

To list your resume with the Job Bank, send

- a minimum of five (5) resumes (more if you wish)
- a check or money order for \$15 (for MPI D/FW chapter members) or \$25 (for non-members) made payable to MPI D/FW Chapter
- a note regarding the type position(s) that interest you

Send these items to:

Jeff Means, CMP
Chair, D/FW MPI Job Bank
3018 Sierra
Carrollton, TX 75007

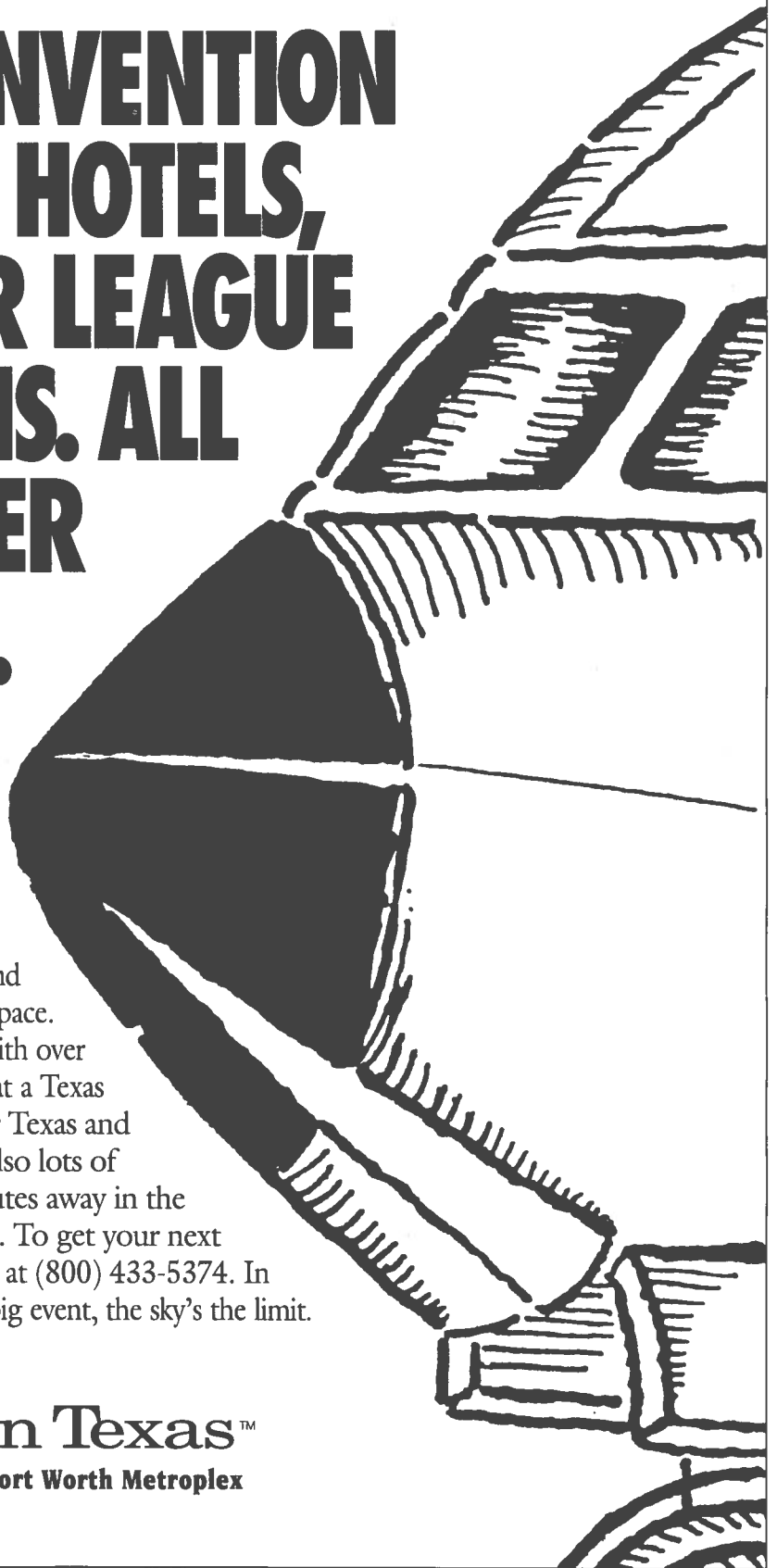
All inquiries are confidential.

D/FW MPI's
**JOB
BANK**

A HUGE CONVENTION CENTER, 40 HOTELS, AND MAJOR LEAGUE ATTRACTIONS. ALL RIGHT UNDER YOUR NOSE.

Just 15 minutes away from D/FW International Airport, is a place where your next meeting can take flight. It's called Arlington, Texas. And it's a place where your group can spread out in the Arlington Convention Center's 48,600 square feet of column-free exhibit space and 8,500 square feet of additional meeting space. Where they can choose from 40 hotels with over 4,000 rooms. And have all kinds of fun at a Texas Rangers baseball game, Six Flags Over Texas and Wet'n Wild water park. Plus, there's also lots of exciting night life happening just minutes away in the nearby cities of Dallas and Fort Worth. To get your next meeting off the ground, call Phyllis Cox at (800) 433-5374. In Arlington, when it comes to planning a big event, the sky's the limit.

Arlington Texas™
Midway of the Dallas/Fort Worth Metroplex



'New Kids on the Block'/Directory Update

Welcome New D/FW MPI Members!

Beth A. Bridges
Lubbock CVB
1120 14th St.
Lubbock, TX 79408
806-747-5232
Supplier

Edye Brookshire
Army & Air Force Exchange Svc.
3911 S. Walton Walker, SD-A/M
Dallas, TX 75266
214-312-2654
Planner

Kelly A. Fisher
Omni Mandalay Hotel
221 E. Las Colinas Blvd.
Irving, TX 75039
214-869-5524
Supplier

Joe D. Gibbons
Medieval Times
1812 Market Ctr. Blvd.
Dallas, TX 75207
214-761-1801
Supplier

Brenda J. Hoover
MADD
511 E. John Carpenter Fwy. #700
Irving, TX 75062
214-744-6233
Planner

Cathy L. Leonard
The Beach Club
3029 Midway Rd.
Grapevine, TX 76501
817-329-1668
Supplier

Mary Ellen Malsbury
World Travel Partners
5550 LBJ Fwy. #900
Dallas, TX 75240
214-702-1014
Supplier

Suzan S. McDonald
Internat'l Alpha Micro Dealers Assn.
2108 N. Freeway, 2nd Floor
Fort Worth, TX 76102
817-332-2929
Planner

Sherian S. Pierce
Northern Telecom, Inc.
2435 N. Central Expy.
Richardson, TX 75080
214-301-2517
Planner

Ken E. Rowe
Class Act
3535 Fairview Ave.
Dallas, TX 75223
214-826-3800
Planner

Greg C. Slight
Sabre Travel Information Network
4200 American Blvd. MD 3109
Fort Worth, TX 76155
214-963-2313
Planner

Vanessa K. Strothman
Medieval Times
1812 Market Center Blvd.
Dallas, TX 75207
214-761-1801
Supplier

Glenn O. Tomlinson
Hewlett Packard Company
3301 Royal Lane
Irving, TX 75063
214-830-8736
Planner

Terri Sue Hensinger
Corporate Magic
4427 Enfield
Dallas, TX 75220
214-869-1919
Planner

Janie L. Wood
Student
34 Pemberton Rd.
Hayland, MA 01778
508-655-9819
Student

For the Record... Address Changes

Sherri Cook, CMP
Sherri Cook & Associates
1805 Keats
Plano, TX 75093
214-732-9396
Planner

Sal A. Sessa
Events Photography
P.O. Box 832324
Richardson, TX 75083
214-437-4437
Supplier

Phyllis Tackitt
The Tower Club
1601 Elm St.
Dallas, TX 75201
214-220-0403
Planner

Terri L. Williams
Hyatt Regency Dallas
300 Reunion Blvd.
Dallas, TX 75207
214-712-7259
Supplier

'Brown Bag' Educational Luncheon Get Organized for Success!



LEFT: Lisa Kanarek of "Everything's Organized" gives speeches and seminars and provides consultation on personal organization.

By Marti Fox
Campbell Travel

"Too many projects! Missed appointments! If I could just get organized before the next rush!"

"How can I get some of this paper off my desk? Who has time to read business periodicals?"

"I need to have a meeting with my staff—WHEN?! I need to return phone calls more quickly!"

Have you had these and other disturbing thoughts about your office life? You devote yourself to doing a good job, but disorganization steals your productivity.

You need to hear Lisa Kanarek, author of *Organizing Your Home Office for Success*, at the Brown Bag Educational Lunch Tuesday, Feb. 1, 1994 at the Lincoln Center

Doubletree Hotel.

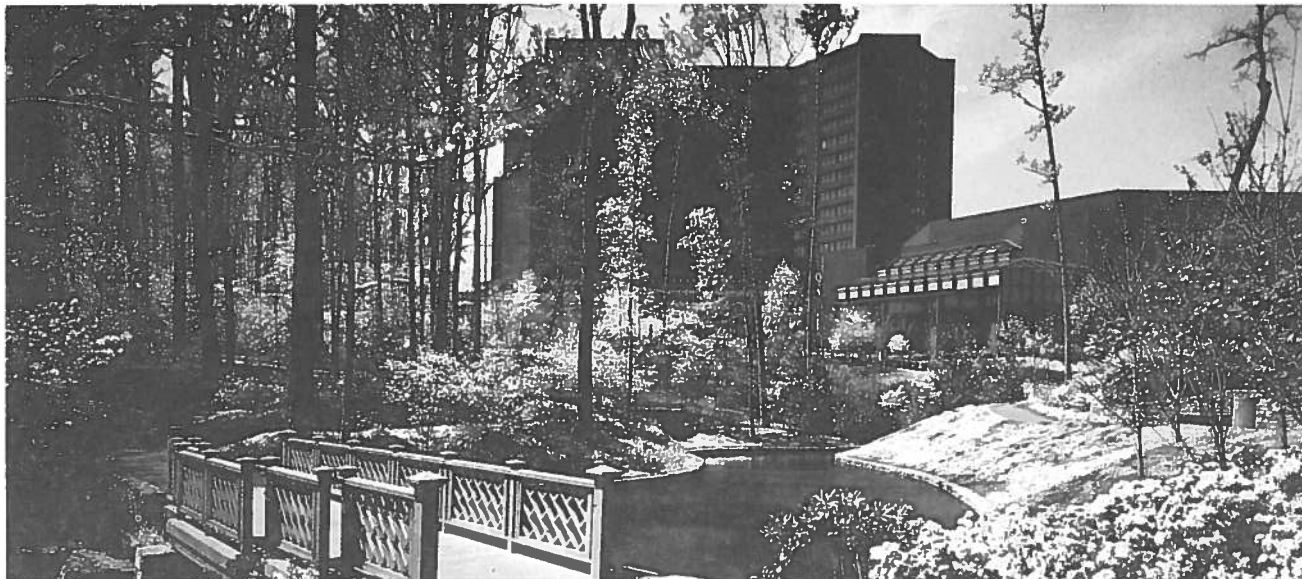
Spend an hour discovering the secrets of simple, everyday organization of your papers, projects and calendar. Regain control!

Kanarek, a professional speaker who has appeared on "Good Morning America," offers ideas to make your day run more efficiently.

Bring a brown bag lunch. Cecil Burdick and the Doubletree will provide beverages.

Make your FREE reservation by Jan. 20. Call Ellen Larson (Loews Anatole Hotel), 214-761-7252, or FAX 214-761-7242.

ANSWER TO
MEMBERSHIP
QUIZ
RENEW
YOUR
MEMBERSHIP



A WORLD CLASS FACILITY
 A GLOBAL COMPANY
 AN OLYMPIC CITY

A TRULY GOLD MEDAL PERFORMANCE!
 THAT'S WHAT YOU CAN EXPECT WHEN YOU
 COMBINE DEDICATED CONFERENCE SERVICE
 SPECIALISTS HAVING MORE THAN 30 YEARS'
 COMBINED EXPERIENCE, AN AWARD
 WINNING CULINARY STAFF, STATE-OF-THE-
 ART AUDIO VISUAL/TECHNICAL SUPPORT,
 AND A LEADING EDGE PHILOSOPHY... WITH A
 LUSH WOODED WATERFALL GARDEN



SETTING IN NORTH ATLANTA'S PRESTIGIOUS
 PERIMETER AREA. AN UNPARALLELED ENVI-
 RONMENT FOR YOUR NEXT MEETING. WE
 OFFER 495 ROOMS AND SUITES WITH 30,000
 SQUARE FEET OF MEETING SPACE ACCOMMO-
 DATING UP TO 1200 PEOPLE. TO OBTAIN
 ADDITIONAL INFORMATION OR TO ARRANGE
 A SITE INSPECTION, CALL OUR SALES
 DEPARTMENT AT (404) 395-7700.

Holiday Inn
 CROWNE PLAZA
 ATLANTA

DISCOVER A WORLD OF DIFFERENCE®



© 1993, Holiday Inns, Inc.

MPI

MEETING PLANNERS INTERNATIONAL®

Meeting Planners International is the world's largest association of meetings professionals with more than 12,000 members in 42 countries and 49 chapters and clubs. MPI's mission is to provide educational opportunities and recognition for those in the meetings industry. The association is committed to excellence in meetings, continuous international growth, research, a strong chapter network and high ethical standards.

MPI Internat'l Headquarters
INFOMART
1950 Stemmons
Suite 5018
Dallas, Texas 75207-3109
214-712-7700

MPI
Dallas/Fort Worth Chapter
10875 Plano Road
Suite 115
Dallas, Texas 75238
214-343-0555

Officers

President
Lesley Meyer, CMP
Sunbelt Motivation & Travel
214-401-0210

President-Elect
Diane Smith, CMP
Alcon Laboratories, Inc.
817-551-8077

Vice President/Administration
Paige Braun
DaCity Associates, Inc.
214-233-9070

Vice President/Education
Michelle Carter
Dallas Convention & Visitors Bureau
214-746-6656

Vice President/Membership
O.D. O'Donnell
Nightlife Talent & Mgt. Agency
214-691-4417

Vice President/Programs
Sue Ferguson-Fry
Cityplace Conference Center
214-841-6830

Vice President/Finance
Carolyn Carey, CMP
Allianz Life Insurance Co. of No. America
214-978-7119

Vice President/Public Relations
Steve Kemble
Steve Kemble Event Design
214-943-5949

Immediate Past President
Mary W. Cowart
Mary Cowart Meeting Consultants
214-248-4429

Board of Directors
Planners
Sherri Cook, CMP
Sherri Cook & Associates
214-394-8688

Alexandra Vurpillat
Carey Limousine
214-638-4828

Cathy Mason
USMotivation
817-540-9845

Phyllis Tackitt
The Tower Club
214-220-0403

Suppliers
Charlotte Merrill-Davis
Event Source Professionals
817-267-6698

Mary Lynn Novelli
Travel Resource/Sterling Hotels
214-556-2151

Linda Sergeant
Bill Reed Decorations, Inc.
214-823-3154

Patricia Tripp, CMP
Princess Cruises & Tours
800-421-4725

CURRENT Staff

Editor
Gracie Hatfield Hilton
The Write Stuff
Ph. & FAX 817-467-7439

Advertising Director
Stephanie Davis
Sheraton Park Central Hotel
214-851-2016

MPI

MEETING PLANNERS INTERNATIONAL®

The BEST keeps getting BETTER

Dallas/Fort Worth Chapter
10875 Plano Road • Suite 115
Dallas, Texas 75238



**DALLAS/FORT WORTH
CHAPTER**