

CURRENT

Meeting Planners International

November 1993

Dallas-Fort Worth Chapter

President's Message

Board Announces Creative Fundraising for D/FW TEAM

By Lesley Meyer, CMP
Sunbelt Motivation & Travel, Inc.

As the MPI D/FW Chapter has grown over the years, so have charitable contributions.

Today, our chapter is involved in fundraising that benefits Love For Kids, Give Kids the World, Trinity Ministry to the Poor, North Texas Food Bank, the MPI Education Research Foundation, and Professional Growth Awards.

In 1993, our chapter will tackle a new project. We have the opportunity to assist in hosting the 1995 Professional Education Conference (PEC) Dec. 10-12, 1995, in Dallas. This major meeting will bring meeting planners from all over the world to our home turf. (See related article on page 5.)

Because we are all proud of our city, we will be looking for

ways to showcase Dallas. To have funds for this special project, our Board of Directors has established a goal of making \$20,000 available for the 1995 PEC.

During the 1993-94 and 1994-95 terms our chapter will donate \$10,000 from general funds, and through our own efforts we will raise another \$5,000 per year over the next two years. As a means of reaching our \$5,000 goal this

(continued on page 9)



Lesley Meyer, CMP

This issue of **CURRENT** is sponsored by

Holiday Inn
Crowne Plaza

Atlanta

MPI

MEETING PLANNERS INTERNATIONAL

November D/FW Chapter Meeting

*"Invite Your Boss
to Explore
Total Quality Management"*

November 18, Thursday

Southland Center Hotel

400 N. Olive
Dallas, Texas 75201
214-922-8000

Orientation 11:00 a.m.
Reception & Registration 11:30 a.m.
Lunch & Program 12 noon

R.S.V.P.
by noon, Tuesday, Nov. 16
Sandi or Jennifer
214-343-0555

Advance Registration \$22
Late Registration \$30
Guest Registration \$25

See page 3 for more details and meeting reservation policy.

INSIDE

President's Column

1

Last Month's Meeting

6

November Meeting Info

3

'Grapevine' News

8

News Briefs

4

Membership Update

10

'95 PEC Set for Dallas

5

Holiday Inn Crowne Plaza

11

CURRENT

Meeting Planners International
Dallas/Fort Worth Chapter

Newsletter Staff

Editor

Gracie Hatfield Hilton
The Write Staff
Phone & FAX
metro 817-467-7439

Vice President/Public Relations

Steve Kemble

Steve Kemble Event Design
Phone: 214-943-5949
FAX: 214-943-2811

Advertising Chair

Stephanie Davis

Sheraton Park Central Hotel
Phone: 214-851-2016
FAX: 214-991-4557

Photographer

Mark Lazarow

Mark Lazarow Photography
214-380-0985
FAX: 214-380-1431

CURRENT is published 12 times yearly for the D/FW Chapter of Meeting Planners International, the industry's leading educational and networking resource in meetings management. Statements of fact and opinion are the responsibility of individual writers and do not imply collective opinion of the officers or members of MPI.

CURRENT Deadlines

Upcoming deadlines for the D/FW MPI chapter newsletter, the *CURRENT*, are Nov. 12 and Dec. 10. Copy and ads are due as follows:

ISSUE	DEADLINE
December	Nov. 12, Friday
January '94	Dec. 10, Friday

Please mail or FAX copy to Gracie H. Hilton, *CURRENT* Editor, 3020 Glasgow Court, Arlington, TX 76015, phone & FAX: (metro) 817-467-7439.

Copy is cheerfully accepted early. Because of production schedules, information received after 5 p.m. on the deadline day will not be included in the newsletter in progress. Late-arriving copy will be included in the next month's issue, if information is still timely.

Upcoming MPI Events

November 18, Thursday

Chapter Meeting
Southland Center
11:30 a.m./Lunch

November 18, Thursday

Executive Workshop
Southland Center
1:30 p.m.

December 5-7

Prof. Education Conference
Anaheim, CA

December 8-11

Golf, Tennis & Fitness Education Clinic
ITT Sheraton Grande Torrey Pines
LaJolla, CA

December 16, Thursday

Chapter Holiday Party
Freeman Warehouse
6:00 p.m./Dinner

January 11, Tuesday

'How-To' Breakfast
Omni Mandalay
7:30 a.m.

January 27, Thursday

Chapter Meeting
Dallas World Aquarium
11:30 a.m./Lunch

February 1, Tuesday

'Brown Bag' Luncheon
Doubletree Lincoln Centre
11:30 a.m.

February 8, Tuesday

Richland College
Internat'l Mtg. Planning Classes Begin
(continues through Tuesday, 3/8)

February 14, Monday

Richland College
Basic Mtg. Planning Classes Begin
(continues through Sunday, 4/17)

NOTE: Chapter meeting plans are subject to change.
Check the *CURRENT* each month to confirm details.

C H A R I T Y

By Mary Lynn Novelli
Travel Resources Sterling Hotel

O R N E R

The D/FW Chapter of MPI is pleased to announce continued support for two of our locally endorsed charities. The November and December monthly meetings will feature a **Food & Clothing Drive** benefiting the North Texas Food Bank and Trinity Ministry to the Poor, organizations dedicated to helping individuals challenged by life's difficulties.

Chapter members are encouraged to bring non-perishable foodstuffs—canned goods and dried foods. Also needed are new or gently used clothing for men, women or children, especially blue jeans, coats, and athletic shoes. There is a special need for socks.

Ask your friends, family and co-workers to contribute to these worthy charities. To encourage participation, donors will be eligible for a drawing.

You can make a difference!

November Meeting Highlights

Invite Your Boss to Explore Total Quality Management

By Donna Daves
The Freeman Companies

Total Quality Management. TQM. Today's buzzword or the new standard for the future? What is TQM? How does it affect the meetings industry?

At the Nov. 18 D/FW MPI chapter meeting, Robert A. Heckman, director of Marketing Americas for Andersen Consulting,

Executive Workshop Theme is Diversity

"Diversity in the Workplace—How to Effectively Manage to Maximize Productivity" is the subject of the Nov. 18 Executive Workshop, which will take place immediately after the November chapter meeting at the Southland Hotel.

Participants will receive invaluable training on how to effectively deal with diversity and its resulting impact on quality—two of the hottest topics in business today.

The workshop will be directed by John R. Hall, Jr., Ph.D., who has presented more than 250 workshops about diversity in the marketplace. Among his many clients are Electronic Data Systems, Martin Marietta, Union Pacific Resources, Rice University, Hitachi Data Systems, and Rohm and Hass.

Hall, who earned his Ph.D. in theoretical chemistry from Harvard University, served as professor of chemistry at Morehouse College and Georgia Tech for more than twelve years. During this time, he developed several programs to attack the problem of the underrepresentation of women and minorities in science.

In 1983 Hall organized the first delegation of black scientists to be invited to the Peoples Republic of China, and was co-founder of the China-U.S. Professional Exchange of Personnel.

Registration for the 1:30-4:30 p.m. workshop is \$10 for MPI members and guests. For reservations contact Sally Goldesberry, CMP (American Society of Mechanical Engineers), 214-746-4901, or FAX 214-746-4902.

will share ways to begin the journey toward quality management. The luncheon meeting will be hosted by the Southland Center Hotel in Dallas.

Andersen Consulting is currently a finalist for the esteemed Malcolm Baldrige Award for Excellence in the Pursuit of Quality.

Heckman, an expert in management and marketing skills, is also an experienced meeting facilitator and host for sales, client and industry meetings, and special events around the country.

Don't miss this unique opportunity to hear proven success stories and discover how your company can take the first step towards providing continuous quality service in today's competitive environment.

Any boss accompanying an MPI member may attend for the special rate of \$22 (with advance registration).

New member orientation will begin at 11:00 a.m. in the Live Oak Room. A pre-meeting reception will be held at 11:30 a.m.

in the Gallery Atrium. The luncheon meeting will begin at noon in the Grand Ballroom.

An Executive Workshop exploring the impact of diversity on quality management will be held from 1:30-4:30 p.m. (See related article on this page.)

As part of the chapter's annual charity drive, please bring donations of canned goods or clothing to the registration tables. (See *Charity Corner* on page 2.)

Co-chairs for the November meeting are Cindy Hamilton (Hackberry Creek Country Club), Traci Bower (Reunion Ranch), Barbara Hitt (Mobil Oil), Phyllis Tackitt (The Tower Club) and Donna Daves (The Freeman Companies).

Among the hosts at the Southland Center Hotel are Lisa Shillings, corporate sales manager, and Dick Glockner, sales manager.

Meeting Reservation & Attendance Policy

Registration fees will be collected at the door; advance payments are not accepted. If paying by check, please have check completed before approaching registration table. Reservations must be made by RSVP deadline for advance registration fee to apply. Late reservations and walk-ins will be accepted on a SPACE AVAILABLE basis. Cancellations must be made by the RSVP deadline. No-shows will be billed. Members are responsible for "no-show" charges for their guests. Guests are limited to attending three meetings per year (spouses are an exception).

November Host Facility

The Southland Center Hotel

The Southland Center Hotel, situated in downtown Dallas, is within walking distance of downtown business centers and just moments away from the Dallas Convention Center, Market Center and Love Field Airport.

Featuring more than 500 guest rooms, the Southland Center Hotel has 50 spacious suites and an executive level where a full American breakfast is available Monday through Friday. The hotel has more than 35,000 square feet of versatile function space, including a newly refurbished Grand Ballroom with state-of-the-art audiovisual and lighting equipment. Dining facilities include the award-winning Cafe Verde, which features Southwestern cuisine, and the popular Pasta Bar, situated in the atrium.

The Southland Center Hotel is situated at 400 N. Olive in downtown Dallas.

- Southbound travelers on the Dallas Tollway, follow signs to downtown. Exit Pearl Street; the Southland will be on the right, at the corner of Pearl and Live Oak Streets.
- Southbound travelers on US 75 (Central Expressway), exit right on Live Oak. The Southland will be on the right, at the corner of Live Oak and Olive Streets.
- Northbound travelers on I-35, take Woodall Rogers to I-75 west and exit on Pearl; the Southland will be on the right, at the corner of Pearl and Live Oak Streets.

Complimentary covered self-parking is available in the Southland Center Garage (entry on Pearl Street). Valet parking from the hotel entrance is \$2. Parking lots near the hotel have fees ranging from \$3-\$5.



News Briefs

National & International News

MPI Gathers Industry Representatives for Presidential Tax Package Summit

Meeting Planners International gathered 32 industry representatives in Atlanta to hear concerns of meeting planners and suppliers about the President's new tax package, its effects on the meetings industry and how MPI International can best support its members.

Corporate, association and independent planners representing an average annual budget of four million dollars and an average of 125 meetings conducted per year participated in the Summit, which was co-hosted by Delta Air Lines and the Atlanta Marriott Marquis. Jonathan, Howe, MPI's legal counsel, discussed the bill's legal ramifications.

Responding to industry concerns expressed at the Atlanta meeting, MPI has produced a White Paper outlining the effects of the President's

tax proposal on the meetings industry.

The White Paper includes a description of the new laws and the various industry aspects that will be affected.

MPI International Emphasizes Importance of Accuracy in Reporting Address Changes

MPI International reminds chapter members of the importance that the member records department be notified immediately whenever a member has an address change.

The information should always include which MPI chapter the member now wishes to be affiliated with. If no choice of chapter is indicated, member records will select the chapter by zip code.

Technology Update

Technology Update, a meetings specific trade show devoted to furthering the knowledge of technology, has returned to the PEC. On both Saturday and Sunday mornings, Dec.

4-5, attendees will learn about the latest and greatest innovations in meetings industry technology. Computerization and off-the-shelf and specialized software will be demonstrated.

Awards Deadlines Finalized

Nominees for International Chapter Manager of the Year are due at MPI Headquarters by March 1, 1994.

Nominees for Chapter of the Year, Awards of Excellence, International Planner of the Year, and International Supplier of the Year, are due by April 5, 1994.

DOLLAR\$ & CENT\$ D/FW Chapter/MPI

For the month ending Sept. 30, 1993

Beginning of the Month \$37,120.94

Income 15,708.83

Disbursements (13,565.44)

EOM Balance \$39,264.33*

*includes \$1,945.00 PGA

Report submitted by Carolyn Carey (Allianz Life Insurance Co.), vice president/finance.



The "Inn" Way to Meet.

Nestled in the trees along the bank of the Paluxy River, the historic Inn On the River has perfected the art of meeting.

- State-of-the-Art Conference Center
- Audio and Video Equipment
- Electronically-Controlled Screen
- Fax Machine, Conference Phone, Copier
- 22 Rooms
- Gourmet Meals
- Tranquil and Creative Haven

INN ON THE RIVER

For meeting information and brochures, contact Kathi Thompson at 214-424-7119
205 S.W. Barnard St. • Glen Rose, Tx. 76043 • 817-897-2101 • Fax 817-897-7729

MPI

MEETING PLANNERS INTERNATIONAL*

The BEST keeps getting BETTER

MPI has the...

BEST

- Meeting planners and suppliers
- Monthly publication
- Educational programs
- And only Resource Center
- Networking opportunities
- Special Interest Groups
- And largest industry voice

1995 Dallas Host Chairs Named

Dallas/Fort Worth MPI Chapter to Help Host 1995 International Professional Education Conference

More than 1,000 MPI members will be coming to Dallas in December 1995. They will come from across our country and from around the world for the Professional Education Conference (PEC)—“considered by many to be the finest educational meeting in the world.”

Charlotte St. Martin, president and CEO of the Loews Anatole Hotel, has been named



Charlotte St. Martin



Dave Whitney

general chair of the 1995 PEC. St. Martin is well known within MPI, having served as an officer as well as a board member on the international level. She was named International Supplier of the Year in 1982 and was an International Industry Award designee in 1988.

Co-chair of the Dallas meeting is Dave Whitney, president and CEO of the Dallas Convention & Visitors Bureau. One of the newer D/FW chapter members, Whitney has been in the hospitality industry for many years and has been president of the Dallas CVB since 1990.

Greg Elam, vice president of communications for the Dallas CVB explained how Dallas was chosen for this important international meeting.

“In the summer of 1990 the Past Presidents Council of the D/FW chapter, together with the Dallas CVB, set out to ‘capture’ the bid for the 1995 meeting,” Elam said. “Not only did we win the bid, but the council has kept the implementation of this meeting on its active agenda ever since.”

Twelve D/FW MPI chapter past presidents remain active locally or internationally, Elam said.

The PEC will be hosted by a committee

of Dallas MPI members from the Dallas CVB and by the D/FW MPI chapter.

“Those who have attended MPI international meetings know how well some cities present themselves,” Elam said. “It will be the intention of the planning committee to do a superlative planning job in presenting Dallas to this important international delegation.”

Elam recalled the outstanding job Dallas did more than 20 years ago when the city hosted an international MPI convention “so fine that it changed the existing pattern of such meetings.”

Does 1995 seem a long way away?

“If so, be aware that there is much to do, and it needs to be done in ‘good ole D/FW style,’” Elam said, encouraging active participation from D/FW chapter members.

The D/FW chapter volunteers can affect the “tone” of the meeting, Elam said.

“It is a gratifying experience to serve as an effective committee member, Elam said, “and we will need assistance in planning a smooth flow of events for this important educational conference.”

December 10-12, 1995. Mark it on your calendar now and plan to participate in the 1995 PEC in Dallas.

Benefits Educational Research Foundation

Spend a Day with a Knight at Medieval Matinee Fundraiser

By M.T. Gnad
National Business Association

Enjoy an afternoon in the Middle Ages at the Medieval Times Dinner & Tournament when the D/FW chapter of Meeting Planners International presents the “Medieval Matinee: Spend a Day with a Knight,” a fundraising benefit for the MPI Educational Research Foundation.

Beginning at 2:00 p.m. Sunday, Feb. 6, 1994, MPI members and guests will experience spectacular pageantry, dramatic horsemanship, breathtaking swordplay, falconry, sorcery, and romance—while feasting on a four-course banquet in true medieval pre-silverware fashion.

Six brave knights will entertain guests by demonstrating their jousting abilities in a “fight to the end.”

Tickets, which may be purchased in advance, are specially priced for this benefit evening. MPI members and guests may attend for \$25, a savings of 15% off the regular price. Children may attend for \$15.

The MPI member selling the most tickets will win a week’s vacation on the island of St. Martin. This special package includes three nights on the Dutch side of the island at Mullet Bay Hotel, plus three nights at La Samanna on the French side of the island. La Samanna is managed by Rosewood Hotels & Resorts, Inc.

Members selling 25 tickets or more will become part of the “Royal Court” and will enjoy VIP seating and special recognition. Members selling 10 or more tickets will be eligible to win monthly prizes; the first drawing will take place at the December chapter meeting.

Members are encouraged to contact family, friends, clients and companies to “Spend a Day with a Knight.” Group seating is available.

To purchase tickets call Judy Benaroché, CMP (Sunbelt Motivation & Travel, Inc.), 214-401-0210; Betty Garrett, CMP (Garrett Speakers International, Inc.), 214-513-0054; or Debra Lakin (Worldtravel Trade Shows & Conventions), 214-702-1030, ext. 3822.

October Meeting Highlights

'Diversity in the Workplace' Program, Announcement of '93-'94 Membership Drive Featured at Chapter Meeting



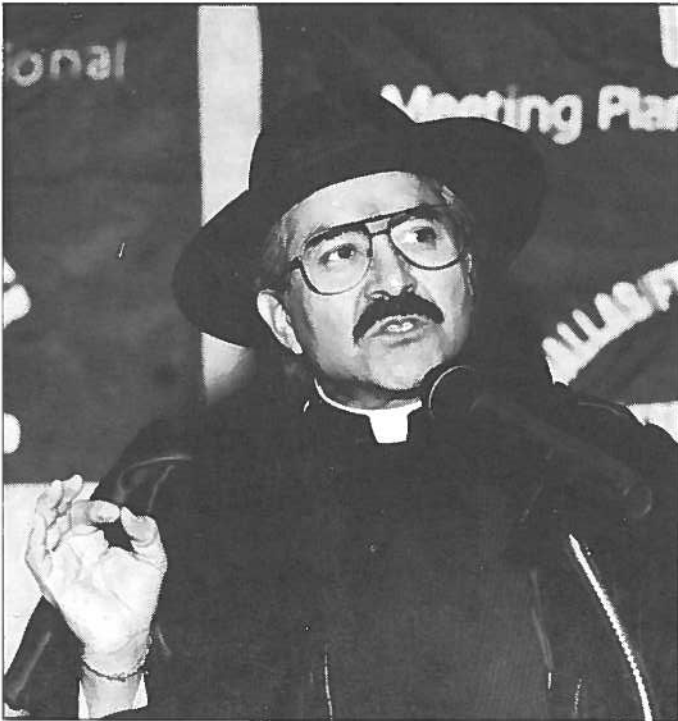
State Representative **Helen Giddings** was guest speaker at the October meeting. Giddings, whose background and experience provide a unique perspective of the value and management of diversity in the workplace, emphasized that changes in the demographic profile of the work force will require changes in thinking and management philosophy.



ABOVE: **Charlotte Merrill-Davis** (Event Source Professionals) announces the kickoff of the 1993-94 membership drive. "We Treasure Our Members." Helping her demonstrate the theme are **Carla Durant** (Greater Dallas Apartment Association), **Betty Smith** (Texas Instruments), and **Bob Mitchell** (Four Seasons). All are carrying bags of "Galleria Gold," representing the prize that will be awarded to the Recruiter of the Year—a \$500 shopping spree at the Galleria. Individuals who recruit at least two new members will be awarded \$10 in Galleria Gold. Watch for more details about the membership drive in the December issue of *CURRENT*.



LEFT: **Tony Cummins** (Culinaire International), **Luana Stoutmeyer** (Encore Productions), **Melissa Logar** (A Catered Affaire), **Ann Connolly** (Culinaire International) and **Steve Kemble** (Steve Kemble Event Design) enjoy the pre-meeting reception at the Clarion Hotel.



ABOVE: **Father Guido Sarducci**, courtesy of O.D. O'Donnell (Nightlife Entertainment and Management) was present to "bless the proceedings" of the new membership drive.

BELOW: Members of the Mississippi Beach sales team, in town for a sales blitz, were special guests at the meeting. At the pre-meeting reception they dispensed promotional materials and gifts to members of the D/FW MPI chapter.



New member **Lynn Stone** (EPRI Meeting Management) was introduced to a number of MPI members at the October meeting by **M.T. Gnat** (National Business Association), who served as Stone's "buddy." The "new member buddy" program is designed to make new members feel welcome.

MANY THANKS!

Many thanks to the individuals and companies whose time, talents, and expertise contributed to the enjoyment of the October meeting— •Guest speaker **Helen Giddings** •Hosts **Bill Cunningham, Mark Jacobs, Ann Patrick** and **Gloria Ford** of the Clarion Hotel •The **Clarion Hotel** for providing the festive fall centerpieces and audiovisual equipment •**George Primo** for entertaining with his musical talents •**O.D. O'Donnell** (Nightlife Talent and Management), for providing Father Guido Sarducci, and October meeting co-chairs •**Sherri Cook** (Sherri Cook & Associates, Inc.), **Debora Jerman** (Cityplace Conference Center), **Amanda Willbanks** (Guest Lodge/Cooper Aerobics Center) and **Grace Young** (Innovations International).

*Meeting Details Reported by
Traci Bower (Reunion Ranch)*

*Photos by
Mark Lazarow Photography*

Heard it through the Grapevine...

By M.T. Gnad
National Business Association

Colleen Albert, CMP, Dallas Convention & Visitors Bureau, and **Dorritt Turner**, Yellow Rose Touring Company, will travel to Florence, Italy, to teach 15 members of our sister chapter how to prepare for the Certified Meeting Planner (CMP) exam.

Congratulations to the staff of the Dallas Convention & Visitors Bureau for receiving the Golden Service Award. Subscribers of *Meetings & Conventions* magazine select the recipients. Dallas was one of 20 domestic bureaus to receive the award.

Kelly Fisher, Omni Mandalay Hotel in Las Colinas, was married in Las Vegas on Sept. 4. After a honeymoon in Las Vegas, the couple returned to Dallas for a reception. Kelly's new last name is Hochstrate.

Betty Garrett, CMP, left MPI headquarters to start her own company, *Garrett Speakers International, Inc.*, which specializes in providing speakers for corporate training and keynote addresses.

Lianne J. Pereira, Wyatt, is expecting her second child at the end of March.

Raleigh J. Parks has retired from Coca-Cola USA, where he worked for 30 years. His most recent position was administration manager.

For the second consecutive year, *The Mansion on Turtle Creek* has been named the best hotel in the United States by the industry's most prestigious survey, the *Conde Nast Traveler Reader's Choice Poll*. Congratulations!

Lori Sherman has been promoted to associate director of sales for the *DFW Hilton Executive Conference Center*, where she has been employed for five years.

Congratulations to the staff of *The Balloon House Design Studio* for winning, for the second consecutive year, the first place award in centerpiece and sculpture design in competition at the International Balloon Arts Convention.

Judith E. Matthews (Davis), CMP, sold her business, Meeting Tech, and joined the Peace Corps. For the next two years she will serve as a small business development advisor in the Slovak Republic. To keep in touch: Judith E. Davis, The Peace Corps, UI. Kulukata 10, 821 05 Bratislava, The Slovak Republic; or Judith E. Davis, c/o Cocks, 50 Yarmouth Rd., Gray, ME 04039.

Gracie Hatfield Hilton, *The Write Stuff*, has been named to the Sesquicentennial Council at Baylor University. Composed of business and professional leaders throughout the U.S., the council is charged with examining and evaluating every facet of the 150-year-old university and making recommendations to provide the direction for Baylor as it moves into the 21st century.

Keep up with personal news about fellow MPI chapter members—job changes, promotions, awards or special recognitions, weddings, or births—through "Heard it through the Grapevine." Please contact Mary-Therese Gnad (214-991-5381 or FAX 214-960-9149) about items of interest for this column.

Looking for a new challenge?

Seeking a qualified applicant to fill a position?

Your first stop should be

D/FW MPI's JOB BANK

If you are out of a job, or looking for a new challenge... or if you have a position to fill and would like to receive resumes of qualified applicants...

Contact

Jeff Means, CMP
Chairman, D/FW MPI Job Bank
3018 Sierra
Carrollton, Texas 75007
214-717-1400
FAX 214-717-1624

Handling Fee

\$15 Members
\$25 Non-Members

All inquiries are confidential.

MPI

MEETING PLANNERS INTERNATIONAL®



Have you ever considered or are you currently serving in a chapter leadership position?

Arrive early for the PEC and attend "Reaching for the Stars"—FREE of charge. The MPI Chapter Management Forum (CMF) provides an arena for interested and current chapter managers (MPI Stars) to discuss problems and pursue solutions, offer networking and recognize outstanding leadership at the chapter level.

TWO EASY WAYS TO REGISTER:

1. Check the box on your PEC Registration Form; or
2. Call MPI Chapter Relations Department 1-214-712-7706 or 7741.

Dec. 5-7 PEC to Meet in Anaheim

The 1993 Meeting Planners International (MPI) Professional Education Conference (PEC) will be held Dec. 5-7 in Anaheim, Calif.

More than 70 instructive workshops in a four-track program will examine the challenges facing the profession and the industry.

Anaheim and Orange County will be showcased at the opening reception and when conference attendees visit Disneyland.

"Meeting Planning in a Diversified World" is the theme for one of the general sessions. Program personalities include Barbara S. Pope, the first assistant secretary of the Navy and most senior female of the Navy in its 217-year history; and Ann M. Morrison, president of the New Leaders Institute and lead author of the book, *Breaking the Glass Ceiling: Can Women Reach the Top of America's Largest Corporations?*

Other conference activities include Meetings Technology Update, a pre-conference CMP review; the MPI Foundation Silent Auction; and the Second Annual MPI Educational Research Foundation Golf, Tennis and Fitness Event.

President's Message continued from page 2


year, your board has voted to participate in a new approach to fundraising. We will volunteer to participate in clinical research studies conducted by a local research company.

The first study, an Acne Usage Study for women, will require three visits to a clinic and use of a specific product over a period of six weeks. Sign-up sheets for this project were enclosed in the October newsletter.

At the completion of the three visits, MPI will receive \$50 for each participating member. If 100 members participate, we will reach our goal of \$5,000.

Should we not reach our goal with this first study, we will attempt to recruit from our membership for future studies. Not only will we be able to raise funds, we will also benefit our fellow man as we test new products as required by the FDA.

We hope at least 100 of our chapter members will join the TEAM for this project. As you can see, *Together Everyone Achieves More.*



MPI
MEETING PLANNERS INTERNATIONAL

1 9 9 3

**Professional
Education
Conference**

**The Number
One Educational
Conference in
the Meetings
Industry**

December
5-7, 1993

Anaheim
California

To obtain registration materials call
1-214-712-7751 or FAX 1-214-712-7795

Meeting Planners International
1950 Stemmons Freeway • Suite 501B • Dallas, TX 75207-3108

C. W. Kendall has spent twenty-five years as an entertainment agent in the Dallas area. Offering the finest in live entertainment. Whatever your needs may be, C. W. and his staff of professionals will work with you to find just the right performers to fit your theme and budget. Ken Ran is dedicated to making your event a success through experience, dependability, and quality entertainment.

Ken·Ran

Entertainment

Agency

C.W.Kendall
president

349-3025

Together
Everyone
Achieves
More
MPI

RAINBOW ENTERTAINMENT

Specializing In:
Bookings ★ Special Events ★ Promotions
Featuring
★ Comedians ★ Hypnotists ★ Magicians ★
★ Bands ★ Specialty Acts ★ Karaoke ★
★ Co-op Promotions ★ Contests ★ Fund-Raisers ★
★ Corporate Production ★ Children's Entertainment ★

11311 Audelia, Suite 248
Dallas, TX 75243
(214) 503-1220

RICHARD S. POLLAK
Consultant

'New Kids on the Block'/Directory Update

Welcome New D/FW MPI Members!

Lou Ann Adams
(Student)
5760 38th Street
Lubbock, TX 79407
806-795-6430
Student

Chip Bauer
Wolfe Greenhouses
2901 S. 12th Street
Waco, TX 76703
800-460-9711
Supplier

Paul Bicha
Hyatt Regency DFW
P.O. Box 619014
DFW Airport, TX 75261
214-615-6735
Supplier

David H. Casey
The Registry Hotel Corp.
16250 Dallas Parkway #105
Dallas, TX 75248
214-248-4300
Supplier

Cynthia A. Cogdell
Digital Equipment Corp.
4851 LBJ Freeway #1100
Dallas, TX 75244
214-702-4182
Planner

Judy K. Largent
Amer. Productivity & Quality Ctr.
1950 Stemmons Fwy. #3060
Dallas, TX 75207
214-746-4050
Planner

Jon E. Lenke
Palm Springs Desert Resorts CVB
69930 Hwy. 111 #201
Rancho Mirage, CA 92270
619-770-9000
Supplier

Robert A. Mandracchia
Forte Hotels
2105 Harwood Rd. #215-129
Bedford, TX 76021
817-545-6183
Supplier

Michelle A. McCandless
Meetings Unlimited
921 Rockledge
Garland, TX 75043
214-686-5145
Supplier

R. Leslie Montisano
Richardson Civic Center
411 W. Arapaho
Richardson, TX 75080
214-238-4192
Supplier

Al C. Nelson
Intelecon Services
3141 Irving Blvd. #205
Dallas, TX 76039
214-630-6141
Supplier

Jackie L. Payne
American Quarter Horse Assn.
1600 Quarter Horse Dr.
Amarillo, TX 79104
806-376-4888
Planner

Theresa L. Schwartz
Budget Rent-a- Car Systems Inc.
802 Port America Pl #200
Grapevine, TX 76051
817-329-8700
Supplier

Scott S. Wilson
Bauer Audio Visual Inc.
1607 W. Mockingbird Lane
Dallas, TX 75235
214-630-6700
Supplier

For the Record... Address Changes

Evie Zelios
Jack Tar Villages
5949 Sherry Lane #1800
Dallas, TX 75225
214-891-9000
Supplier

Palm Springs Convention Center

PALM SPRINGS, CALIFORNIA

**THE
PREFERRED
D/FW MPI
MEETING
SITE**



PHOTOGRAPHY BY ARTHUR COLEMAN

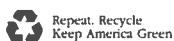
- 66,000 Sq. Ft. of carpeted exhibit hall
- Over 15,000 Sq. Ft. of meeting rooms, including a 414 seat, tiered theater
- 410 room Wyndham Hotel attached to the convention center all under the same roof



*Palm Springs
Convention Center*

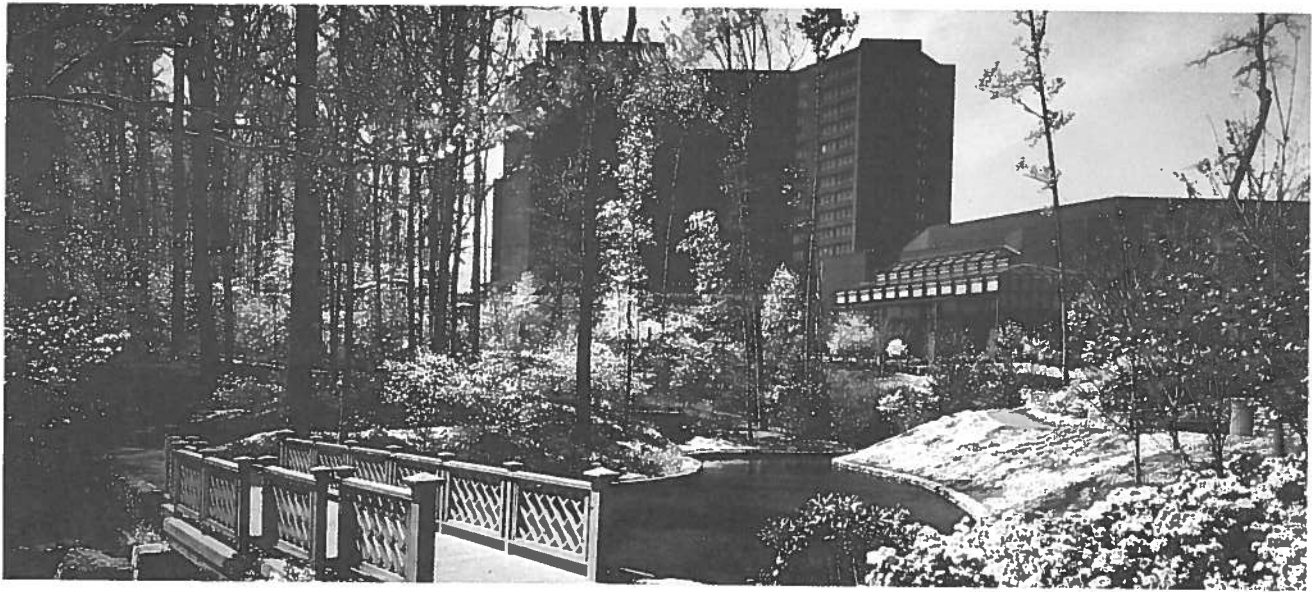
- Over 1,800 hotel rooms, world class shopping & dining within a 5 min. walk
- 1.5 miles from the Palm Springs Airport

Call **800/333-7535** today and we'll send you a free video site tour and gift.



277 N. Avenida Caballeros • Palm Springs, CA 92262 • 800/333-7535 • 619/325-6611 or FAX 619/322-6921





A WORLD CLASS FACILITY
 A GLOBAL COMPANY
 AN OLYMPIC CITY

A TRULY GOLD MEDAL PERFORMANCE!
 THAT'S WHAT YOU CAN EXPECT WHEN YOU
 COMBINE DEDICATED CONFERENCE SERVICE
 SPECIALISTS HAVING MORE THAN 30 YEARS'
 COMBINED EXPERIENCE, AN AWARD
 WINNING CULINARY STAFF, STATE-OF-THE-
 ART AUDIO VISUAL/TECHNICAL SUPPORT,
 AND A LEADING EDGE PHILOSOPHY... WITH A
 LUSH WOODED WATERFALL GARDEN



SETTING IN NORTH ATLANTA'S PRESTIGIOUS
 PERIMETER AREA. AN UNPARALLELED ENVI-
 RONMENT FOR YOUR NEXT MEETING. WE
 OFFER 495 ROOMS AND SUITES WITH 30,000
 SQUARE FEET OF MEETING SPACE ACCOMMO-
 DATING UP TO 1200 PEOPLE. TO OBTAIN
 ADDITIONAL INFORMATION OR TO ARRANGE
 A SITE INSPECTION, CALL OUR SALES
 DEPARTMENT AT (404) 395-7700.

Holiday Inn
 CROWNE PLAZA
 ATLANTA

DISCOVER A WORLD OF DIFFERENCE®



© 1993, Holiday Inns, Inc.

MPI

MEETING PLANNERS INTERNATIONAL®

Meeting Planners International is the world's largest association of meetings professionals with more than 12,000 members in 42 countries and 49 chapters and clubs. MPI's mission is to provide educational opportunities and recognition for those in the meetings industry. The association is committed to excellence in meetings, continuous international growth, research, a strong chapter network and high ethical standards.

MPI Internat'l Headquarters
INFOMART
1950 Stemmons
Suite 5018
Dallas, Texas 75207-3109
214-712-7700

MPI
Dallas/Fort Worth Chapter
10875 Plano Road
Suite 115
Dallas, Texas 75238
214-343-0555

Officers

President
Lesley Meyer, CMP
Sunbelt Motivation & Travel
214-401-0210

President-Elect
Diane Smith, CMP
Alcon Laboratories, Inc.
817-551-8077

Vice President/Administration
Paige Braun
DalCity Associates, Inc.
214-233-9070

Vice President/Education
Michelle Carter
Dallas Convention & Visitors Bureau
214-746-6656

Vice President/Membership
O.D. O'Donnell
Nightlife Talent & Mgt. Agency
214-691-4417

Vice President/Programs
Sue Ferguson-Fry
Cityplace Conference Center
214-841-6830

Vice President/Finance
Carolyn Carey, CMP
Allianz Life Insurance Co. of No. America
214-978-7119

Vice President/Public Relations
Steve Kemble
Steve Kemble Event Design
214-943-5949

Immediate Past President
Mary W. Cowart
Mary Cowart Meeting Consultants
214-248-4429

Board of Directors

Planners
Sherri Cook, CMP
Sherri Cook & Associates
214-394-8688

Alexandra Vurpillat
Carey Limousine
214-638-4828

Cathy Mason
USMotivation
817-540-9845

Phyllis Tackitt
The Tower Club
214-220-0403

Suppliers
Charlotte Merrill-Davis
Event Source Professionals
817-267-6698

Mary Lynn Novelli
Travel Resource/Sterling Hotels
214-556-2151

Linda Sergeant
Bill Reed Decorations, Inc.
214-823-3154

Patricia Tripp, CMP
Princess Cruises & Tours
800-421-4725

CURRENT Staff

Editor
Gracie Hatfield Hilton
The Write Stuff
Ph. & FAX 817-467-7439

Advertising Director
Stephanie Davis
Sheraton Park Central Hotel
214-851-2016

MPI

MEETING PLANNERS INTERNATIONAL®

The BEST keeps getting BETTER

Dallas/Fort Worth Chapter
10875 Plano Road • Suite 115
Dallas, Texas 75238



**DALLAS/FORT WORTH
CHAPTER**

