

MPI

MEETING PLANNERS INTERNATIONAL®

CURRENT

Meeting Planners International

October 1993

Dallas-Fort Worth Chapter

President's Message

With TEAM MPI — 'The Best Keeps Getting Better'

By Lesley Meyer, CMP
Sunbelt Motivation & Travel, Inc.

Your D/FW chapter leaders, the MPI Board of Directors and the staff of MPI are all committed to the organization's mission statement:

To provide educational opportunities for professional growth and development for those in the meetings industry through educational programs and services, communication, recognition, special interest groups, and networking. As the premier organization in the meetings industry, Meeting Planners International is committed to excellence in meetings, continuous international growth, research, a strong chapter network, and ethical standards.



Lesley Meyer, CMP

With more than 12,000 members in 42 countries and 49 chapters and clubs, MPI is the world's largest association of meeting professionals. Our August meeting at Southfork Ranch was one of the best I have ever attended. The program committee, with the assistance of your chapter leaders, provided an overview of the numerous activities of our local chapter. Through this annual event,

(continued on page 9)

This issue of **Current** is sponsored by

**Holiday Inn
Crowne Plaza**

Atlanta

MPI

MEETING PLANNERS INTERNATIONAL®

October D/FW Chapter Meeting

"Diversity—a Competitive Advantage"

October 28, Thursday

Clarion Hotel

*1241 W. Mockingbird Lane
Dallas, Texas 75247
214-630-7000*

*Orientation 11:00 a.m.
Reception & Registration 11:30 a.m.
Lunch & Program 12 noon*

*R.S.V.P.
by noon, Tuesday, Oct. 26
Sandi or Jennifer
214-343-0555*

*Advance Registration \$22
Late Registration \$30
Guest Registration \$25*

See page 3 for more details and meeting reservation policy.

INSIDE

President's Column

1

Membership Update

8

October Meeting Info

3

'Grapevine' News

10

News Briefs

4

Holiday Inn Crowne Plaza

11

Last Month's Meeting

6

Chapter Leadership

12

CURRENT

Meeting Planners International
Dallas/Fort Worth Chapter

Newsletter Staff

Editor
Gracie Hatfield Hilton
The Write Stuff
Phone & FAX
metro 817-467-7439

Vice President/Public Relations

Steve Kemble
Steve Kemble Event Design
Phone: 214-943-5949
FAX: 214-943-2811

Advertising Chair

Stephanie Davis
Sheraton Park Central Hotel
Phone: 214-851-2016
FAX: 214-991-4557

Photographer

Mark Lazarow
Mark Lazarow Photography
214-380-0985
FAX: 214-380-1431

CURRENT is published 12 times yearly for the D/FW Chapter of Meeting Planners International, the industry's leading educational and networking resource in meetings management. Statements of fact and opinion are the responsibility of individual writers and do not imply collective opinion of the officers or members of MPI.

CURRENT Deadlines

Copy and ads for the D/FW MPI chapter newsletter, the CURRENT, are as follows:

ISSUE	DEADLINE
November	Oct. 15, Friday
December	Nov. 12, Friday
January '94	Dec. 10, Friday

Please mail or FAX copy to Gracie H. Hilton, CURRENT Editor, 3020 Glasgow Court, Arlington, TX 76015, phone & FAX: (metro) 817-467-7439.

Copy is cheerfully accepted early. Because of production schedules, information received after 5 p.m. on the deadline day will not be included in the newsletter in progress. Late-arriving copy will be included in the next month's issue, if information is still timely.

Upcoming MPI Events

- | | |
|---|---|
| <p>October 18
October 25
November 1
November 8
November 15
(Mondays)
Basic Mtg. Planning Course
Richland College
7-9 p.m.</p> | <p>October 28, Thursday
Chapter Meeting
Clarion Hotel
11:30 a.m./Lunch</p> |
| <p>October 19
October 26
November 2
November 9
November 16
(Tuesdays)
Advanced Mtg. Planning Course
Richland College
7-9 p.m.</p> | <p>November 18, Thursday
Chapter Meeting
Southland Center
11:30 a.m./Lunch</p> |
| <p>October 26, Tuesday
'Brown Bag Luncheon
Arlington Hilton
11:30 a.m.-1:00 p.m.</p> | <p>December 5-7
Prof. Education Conference
Anaheim, CA</p> |
| | <p>December 8-11
Golf, Tennis & Fitness Education Clinic
ITT Sheraton Grande Torrey Pines
LaJolla, CA</p> |
| | <p>December 16, Thursday
Chapter Holiday Party
Freeman Warehouse
6:00 p.m./Dinner</p> |

NOTE: Chapter meeting plans are subject to change.
Check the CURRENT each month to confirm details.

Braun, Vurpillat Named to New Leadership Positions

Paige Braun (Dal City Associates, Inc.) has been named a vice president of the D/FW MPI chapter. Braun, elected



Paige Braun



Alex Vurpillat

to a board position during the March elections, will serve as vice president of administration, an office vacated by Kim Kelley, CMP. This decision was made by

a vote of the board of directors.

Kelley recently left the Tower Club in Dallas to move to Los Angeles to serve as director of catering at the City Club on Bunker Hill.

Braun, an MPI member since 1990, has been a board member since 1991. She was a member of the education committee, 1990-93.

Alex Vurpillat (Carey Transportation), an MPI member since 1989, will fill Braun's board position. Vurpillat was on the board in 1992-93, served on the education committee, 1989-93, and on the community services committee, 1992-93. Vurpillat was named an "alternate planner" in the spring elections.

October Meeting Highlights

State Representative Giddings to Discuss 'Diversity in the Workplace' at October Meeting

By Grace Young
Innovations International Inc.

Projected demographic changes over the next several years—85% of the net new entrants into the work force between 1990 and the year 2005 will be

women, minorities, and immigrants; only 15% will be native white males—will significantly impact all phases of business.



Helen Giddings

At the Oct. 28 D/FW MPI chapter meeting, State Representative Helen Giddings will discuss how changes in the

demographic profile of the work force will require changes in thinking and management philosophy. The luncheon meeting will be hosted by The Clarion Hotel in Dallas.

Representative Giddings is vice chair of the Dallas Transit Board, and is a board member of United Way and Graduate Leadership Dallas. She is secretary of the Legislative Black Caucus and a member of Dallas Together. Giddings has served as executive director of leadership development at the Greater Dallas Chamber of Commerce, and served two terms as president of the Dallas Black Chamber of Commerce.

Giddings, whose background and experience provide a unique perspective of the value and management of diversity in the workplace, will discuss issues such as language, culture, gender, disabilities, and race.

Co-chairs for the September meeting are Sherri Cook (Sherri Cook & Associates, Inc.), Debora Jerman (Cityplace Conference Center), Amanda Willbanks (Guest Lodge/Cooper Aerobics Center) and Grace Young (Innovations International).

Our hosts at The Clarion include William Cunningham, general manager; Mark Jacobs, assistant general manager; Ann Patrick, director of sales, and Gloria Ford, director of catering.

October Host Facility: The Clarion Hotel

The Clarion Hotel, situated in the Dallas Market Center, is a business hotel designed for and ideally suited to business meetings.

Featuring 350 guest rooms, two penthouse suites, and five junior suites, the Clarion has 13,000 square feet of flexible meeting space.

Other amenities include an outdoor swimming pool, entertainment deck, and a fitness center. Food and drink are available at the Harvest Cafe and Reunion Bar.

The Clarion's executive management team is proud that the hotel is known for its friendly and attentive staff and its neighborly atmosphere and feel that excellent value and dependable quality account for the hotel's large volume of repeat customers.

The Clarion is situated at the intersection of Stemmons Freeway (I-35) and Mockingbird Lane. •From downtown, take Stemmons (I-35) north to Mockingbird Lane. •From Fort Worth and Arlington, take I-30 east to Loop 12 north to 183 east to Mockingbird Lane, or take 183 east to Mockingbird Lane; turn left under freeway to hotel. •From DFW north take 114 east through Las Colinas to 183 to Mockingbird; exit left.

Meeting Reservation & Attendance Policy

Registration fees will be collected at the door; advance payments are not accepted. If paying by check, please have check completed before approaching registration table. Reservations must be made by RSVP deadline for advance registration fee to apply. Late reservations and walk-ins will be accepted on a SPACE AVAILABLE basis. Cancellations must be made by the RSVP deadline. **No-shows will be billed.** Members are responsible for "no-show" charges for their guests. Guests are limited to attending three meetings per year (spouses are an exception).

C. W. Kendall has spent twenty-five years as an entertainment agent in the Dallas area. Offering the finest in live entertainment. Whatever your needs may be, C. W. and his staff of professionals will work with you to find just the right performers to fit your theme and budget. Ken Ran is dedicated to making your event a success through experience, dependability, and quality entertainment.

Ken·Ran
Entertainment
Agency
C.W.Kendall
president
349-3025



News Briefs

D/FW Chapter News

'Brown Bag' Luncheon Set Oct. 26

Ever wonder how hotel sales representatives determine room rates and meeting room rental/set up charges? Don't miss the Oct. 26 "Brown Bag" luncheon at the Arlington Hilton. It's informal and informative—and FREE!

Panel members—including a hotel director of sales, an audio visual sales manager, and a DMC sales representative—will discuss "What a Planner Needs to Know about the Supplier's Business."

Topics will include •Working with Budgets, •Finalizing Negotiations, •Audio Visual Equipment/Costs, •Parties, and •Entertainment.

The "Brown Bag" Luncheon Series provides cost-defrayed, quality educational programs to D/FW chapter members. Bring your lunch; MPI will supply soft drinks.

Ellen Larson (Loews Anatole Hotel) is chair of the 'Brown Bag' series. Larson replaces Tony Cummins (Culinaire International), who is now director of education.

To register for the 11:30 a.m.-1:00 p.m. event, contact Larson, 214-761-7252 or FAX 214-761-7242.

The Arlington Hilton is situated at 2401 East Lamar Blvd., Arlington, TX 76006.

First 'Brown Bag' Luncheon Well Attended by Planners

The first in a series of five 'Brown Bag' luncheons, featuring information about MPI's Education Resource Center, was attended by 10 planners and four suppliers—resulting from particular efforts to involve more planner interest.

Terri Lawrence, director of the Resource Center, and Sally Finberg, research librarian, shared the stage and presented an outstanding program about the wide variety of services available through the Resource Center.

D/FW Chapter Membership Is 582

Membership in the D/FW chapter of MPI stands at 582, according to the chapter membership report as of Aug. 31.

National & International News

Georgia Chapter Is Big Winner

The Georgia Chapter had the highest percentage of new members—97%—attend the 1993 Annual Conference in Atlanta, claiming six airline tickets for travel anywhere in the continental U.S. from Delta Air Lines, the official carrier for the Annual Conference.

Close runners-up were the Tennessee Chapter with 34% of new members in attendance, and the South Florida Chapter, with 27%.

MPI Does *Not* Endorse ISMP

In a letter to the executive director of the International Society of Meeting Planners (ISMP), Coleman, CMP, president of MPI (international), clearly explains that MPI does *not* endorse the organization.

The letter from Coleman was in response to an Aug. 18, 1993 promotional letter stating that a "letter of endorsement" from MPI was enclosed. The letter, received by many MPI members, was from Michele Sanseverino, MPI's director of marketing.

Coleman's letter indicates that Sanseverino's letter, which was mailed after "the recent federal conviction and probable imprisonment of ISMP's founder on illegal use of society funds for political campaign contributions" was merely an attempt "to provide ISMP members with an alternative to their membership in ISMP."

"It is inconceivable that the letter could possibly be construed as a 'letter of endorsement.' It in no way implies any endorsement of ISMP or any of its questionable business practices," Coleman says in the letter.

MPI International Board to Meet

When the MPI International Board meets next month at Mullet Bay Resort in St. Maarten, it will participate in an orientation program focusing on improved chapter relations and member services.

The Board will also discuss the initial strategic planning report submitted by the "Focus on the Future" Task Force.

DOLLAR\$ & CENT\$ D/FW Chapter/MPI

For the month ending August 31, 1993:

Beginning of the Month	\$41,168.56
Income	6,807.66
Disbursements	(10,855.28)
EOM Balance	\$37,120.94

Report submitted by Carolyn Carey (Allianz Life Insurance Co.), vice president/finance.

MPI
MEETING PLANNERS INTERNATIONAL

**The Number
One Educational
Conference in
the Meetings
Industry**

1 9 9 3
**Professional
Education
Conference**

**December
5-7, 1993**
**Anaheim
California**

To obtain registration materials call
1-214-712-7751 or FAX 1-214-712-7795
Meeting Planners International
1950 Stemmons Freeway • Suite 5018 • Dallas, TX 75207-3109

a Job Bank Service...**Member Transition Grants
Assist Unemployed Members**

In order to assist unemployed members in their quest for employment, the DFW chapter of MPI instituted the Member Transition Grant, according to Jeff Means, CMP (SEI Incentives), chair of the chapter Job Bank.

"The Member Transition Grant allows unemployed members to attend four consecutive monthly meetings at no cost," said Means. "This is a great opportunity for industry networking, which is invaluable to the job seeker."

Members in good standing of the D/FW chapter for one year may apply for the grant. Upon approval, the member may attend the next four consecutive monthly chapter meetings at no cost.

A maximum of five grants per month will be approved. Missed meetings may not carry over, and if employment is found during the four-month period, the grant becomes invalid.

For more information about applying for the Member Transition Grant program, contact Means at 214-717-1400, or Margaret Brown, CMP (Convex Computer Corporation), 214-497-4798.

**INN ON THE RIVER****The "Inn" Way
to Mix
Business
and
Pleasure.**

Nestled in the trees along the bank of the Paluxy River, the historic Inn On the River has perfected the concept of mixing business and pleasure.

- State-of-the-Art Conference Center
- Audio and Video Equipment
- Electronically-Controlled Screen
- Fax Machine/Conference Phone/Copier
- 22 Rooms
- Gourmet Meals
- Tranquil and Creative Haven

For meeting information and brochures, contact Kathi Thompson at 214-424-7119
205 S.W. Barnard St. • Glen Rose, Tx. 76043 • 817-897-2101 • Fax 817-897-7729

**The little van
that can.**

It can take you to the airport. It can bring you home. Any time day or night. 7 days a week. It's reliable. Comfortable. And doesn't cost much. It departs promptly and makes no more than 3 stops. So catch SuperShuttle-the little van that can and - *Take the Easy Way Out.*

Dallas/Fort Worth
(817) 329-2000

Phoenix
(602) 244-9000

Los Angeles
(310) 338-1111

San Francisco
(415) 558-8500

ExecuCar™

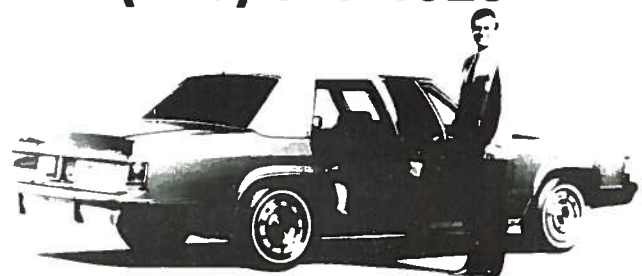
EXECUTIVE SEDAN SERVICE

A more businesslike way to be chauffeur-driven

- **24-HOUR SERVICE, 7 DAYS A WEEK**
- **Affordable Rates**
- **Professional, courteous drivers**
- **Major credit cards accepted**
- **Personalized comfort of a luxury sedan**
- **Airport transfers**
- **Local transportation**
- **Statewide charters**

FOR RESERVATIONS OR INFORMATION

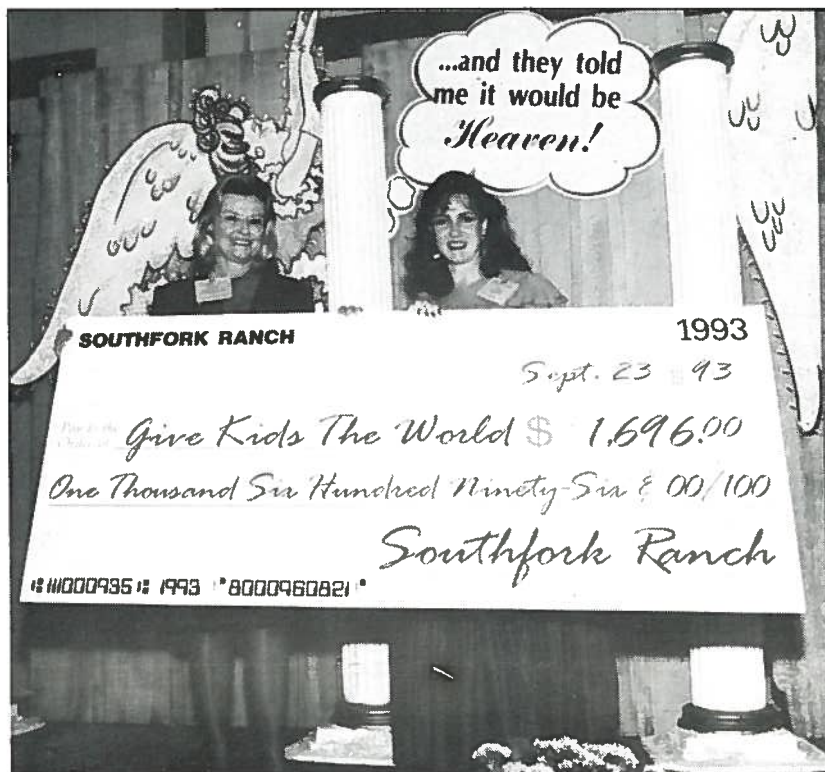
(800) 327-4020



September Meeting Highlights

September Features Addison Conference & Theatre Centre & Rubber Chicken Improvisation Troupe

Photos by
Mark Lazarow Photography



Joy Johnson (Southfork Ranch) presented the chapter with a check for \$1696, Southfork's donation of a portion of each guest's meal ticket from the August meeting. Accepting the check on behalf of the chapter was President **Lesley Meyer, CMP** (Sunbelt Motivation & Travel), who announced that it would be a gift to "Give Kids the World," MPI's official charity.



"Exercising Your Mind: a Humorous Look at Problem Solving through Improvisation" was the theme of a presentation by the **Rubber Chicken Improvisation Troupe**. **Alice Riggins** (All-in-One Tour Services) was a willing participant as Rubber Chicken illustrated ways to involve the audience in creative and interactive games as icebreakers for meetings.



LEFT: **Grace Young** (Innovations International Inc.) visits with **Sally Goldesberry, CMP** (American Society of Petroleum Engineers). Grace is encouraging Sally to attend the October meeting which will feature Texas Representative Helen Giddings who will address "Diversity in the Workplace."

MANY THANKS!

Many thanks to the many individuals whose time, talents, and expertise contributed to the enjoyment of the September meeting— • Director of Catering **Louise Moore** and all the staff at **Sfuzzi** for a tasty meal • **Mike Miller** (Margaritas R Us) for providing the frozen drink machine • **Shawn Patrello** and the members of the **Rubber Chicken Improvisation Troupe** for terrific entertainment • and to **Nancy Calico** (J&S Audio Visual Communications), **Linda Sergeant** (Bill Reed Decorations), **Greg Pynes** (Addison Conference & Theatre Centre), **Cindy Hamilton** (Hackberry Creek Country Club), **Kathy Thompson** (Inn on the River) and **Dawn Conley** (Hilton Executive Inn and Conference Center).



LEFT: President **Lesley Meyer, CMP** (Sunbelt Motivation & Travel) discussed the importance of teamwork between planners and suppliers—supplanners—in achieving common goals. Meyer emphasized the point with her leadership theme, “Team MPI—Together Everyone Achieves More.”

ABOVE LEFT: **Mary Jo Malone** (Plaza of the Americas) announced that Medieval Times will once again host a fundraiser benefitting the MPI Education and Research Foundation. The 1994 event will occur on a weekend so that families will be able to enjoy the festivities.

ABOVE RIGHT: **Judith Mathews, CMP** (Meeting Tech) said farewell “to the most important group in my life” after chapter membership saluted her with a toast in honor of her commitment to serve in Slovakia as a small business administrator for the Peace Corps.

**Cutlines by
Traci Bower (Reunion Ranch)**

RIGHT: Co-chairs for the September meeting at Addison Conference & Theatre Centre were **Linda Sergeant** (Bill Reed Decorations), **Greg Pynes** (Addison Conference & Theatre Centre) and **Cindy Hamilton** (Hackberry Creek Country Club).

BELOW: **Julla Geha** (Krisam Group), **Teresa Juenger** (Explosives), **Vicki Kempe** (Radio Shack), **Kathy Capelle** (Explosives) and **Patricia McCain** (Krisam Group) pause for a photo before a delicious luncheon catered by Sfuzzi of Addison.



'New Kids on the Block'/Directory Update

Welcome New D/FW MPI Members!

Sal A. Sessa
Events Photography
P.O. Box 832324
Richardson, TX 75083
214-437-4437
Supplier

Diane C. Cannon
(Student)
6305 Stonehill Drive
Dallas, TX 75240
214-788-4098
Student

Matt Carnes
Four Star Marketing
3011 Gateway #300
Irving, TX 75063
214-550-1311
Supplier

Rose Duff
American Contractors Insurance
12222 Merit Dr. #1660
Dallas, TX 75251
214-702-9004
Planner

Angela D. Eger
TX Society of CPAs.
1421 Mockingbird Ln
Dallas, TX 75247
214-689-6000
Planner

Iiana Fineberg
Weil Gotshal & Manges
100 Crescent Ct. #1300
Dallas, TX 744201
214-746-7831
Planner

Patricia M. Gallant
American Airlines Decision Tech
4255 Amon Carter Blvd. M04462
Ft. Worth, TX 76155
817-963-1574
Planner

Al R. James
Omnitrition Int'l Inc.
2045 Chennault Dr.
Carrollton, TX 75006
214-702-7600
Planner

Susan L. Jones
Morton's of Chicago
501 Elm Street
Dallas, TX 75202
214-741-2277
Supplier

Mary Barne Knox
Kim Dawson Agency Tower North
2710 . Stemmons Fwy. #700
Dallas, TX 75207
214-630-5161
Supplier

Wilma J. Mabrey
Oryx Energy Company
13155 Noel Road
Dallas, TX 75240
214-715-8554
Planner

Michael A. Meyers
The Arc
500 E. Border St. #300
Arlington, TX 76011
817-261-6003
Planner

Codi L. Missimo
Crown Sterling Suites
4650 N. Airport Fwy.
Irving, TX 75062
214-790-0093
Supplier

Joseph N. Provence
Meeting Management Associates
4100 N. McEwen #101
Dallas, TX 75244
214-386-9403
Supplier

Donna C. Smithson
(Independent Planner)
6516 Prince St.
Dallas, TX 75214
214-827-0343
Planner

J. Scott Thompson
Showco Creative Services
201 Regal Row
Dallas, TX 75247
214-630-1188
Supplier

Terry White
Hyatt Regency DFW
P.O. Box 619014 Intl. Pkwy.
DFW Airport, TX 75261
214-615-6711
Supplier

Grace A. Young
Innovations Int'l
815 Bethel School Rd.
Coppell, TX 75019
214-393-4913
Supplier

Nancy C. Bannister
Central & Southwest Corp.
1616 Woodall Rodgers Fwy.
Dallas, TX 75202
214-777-1711
Planner

David P. Bruce II
Stouffer Nashville Hotel
611 Commerce St.
Nashville, TN 37203
615-255-8400
Supplier

Stacey E. D'Antoni
HD Vest Financial Services
433 E. Las Colinas Blvd. #300
Dallas, TX 75039
214-556-1651
Planner

Debi Ensor
TX Mtgs. & Promotional Programs
P.O. Box 502
Colleyville, TX 76034
817-540-5353
Supplier

Julia Geha
Krisam Group
15201 Dallas Pkwy. 453
Dallas, TX 75248
214-458-8692
Supplier

Mary K. Havens
Convex Computer Corp.
3000 Waterview Pkwy.
Richardson, TX 75080
214-497-4584
Planner

James N. Howard
Hyatt Hotels Corp.
300 Reunion Blvd.
Dallas, TX 75207
214-651-1234
Supplier

Daniel G. Hughes
Personal Computer Rentals
2035 Royal Lane #200
Dallas, TX 75229
214-620-8701
Supplier

Sherry D. Jenkins
American Fire Sprinkler Assn.
12959 Jupiter Rd.
Dallas, TX 75238
214-349-5965
Planner

Mike McGinnity
Arkansas Excelsior Hotel
Three Statehouse Plaza
Little Rock, AR 72201
501-375-5008
Supplier

Andrea North Wharton
Central & Southwest Corp.
1616 Woodall Rodgers Fwy.
Dallas, TX 75266
214-777-3786
Planner

Ann R. Patrick
Clarion Hotel
1241 Mockingbird Lane
Dallas, TX 75247
214-742-8200
Supplier

Shannon D. Smith
Associated Locksmiths of America
9959 Adleta Blvd. #408
Dallas, TX 75243
214-553-5873
Planner

Linda Tressa
Northern Telecom Wireless Div.
2435 N. Central Expwy.
Richardson, TX 75080
214-301-2618
Planner

Nancy Ward Reams
TX Mtgs. & Promotional Programs
P.O. Box 502
Colleyville, TX 76034
817-540-5353
Supplier

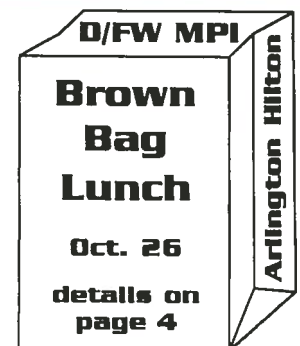
Patty N. Yonce
Smithkline Beecham
Pharmaceuticals
2000 E. Lamar Blvd. #280
Arlington, TX 76006
817-274-7911
Planner

For the Record... Address Changes

Gregory Pynes
Town of Addison
P.O. Box 144
Dallas, TX 75001
214-450-6202
Planner

Wendy Skalski
Circle R. Ranch
5901 Cross Timbers Rd.
Flower Mound, TX 75028
817-430-1561
Supplier

John Ures
AVW Audio Visual Inc.
2241 Irving Blvd.
Dallas, TX 75207
214-638-0024
Supplier



President's Message

'The Best Keeps Getting Better!'
continued from page 1

dubbed the "MPI Resources" meeting, our chapter members are encouraged to get involved.

Presently the D/FW chapter has 582 members. In this group (49% are planners; 51% are suppliers), approximately 200 members are in attendance at each of our twelve annual meetings. Last year 376 members contributed to numerous activities by chairing or working on committees or projects.

The much-used phrase, "You get out of it what you put into it," is most appropriate when considering your MPI membership. I cannot stress enough the importance of becoming actively involved in order to grow professionally and personally.

You are a part of a \$75.6 billion industry (encompassing meetings, conventions, expositions and incentives), according to the most recent study conducted by the Convention Liaison Council, and MPI plays a vital role in education and promotion of this industry. Our association has been repeatedly noted in the press and among our peers as "The Best." But what exactly is the best?

Let's consider the definition of BEST: "A superlative of 'good.' Surpassing all others in excellence, achievement, or quality. Most satisfactory, suitable, or useful. Greatest. Largest."

Quite a definition! But it certainly applies to MPI. To illustrate, let's review a few of the accomplishments of this past year.

1. A 12.5% membership growth resulted in 4,300 new members since July 1992.

2. MPI chapters hosted 294 chapter programs.

3. A record-breaking 2,007 attended the Annual Conference in Atlanta.

4. The D/FW chapter mailed 7,500 chapter newsletters (thanks to the efforts of Editor Gracie Hatfield Hilton).

5. *The Meeting Manager* is printed 12 times per year. It delivers the news members need today, plus the information and knowledge members need to know for tomorrow.

6. Through our public relations efforts, MPI is regularly recognized in almost every monthly issue of key trade press. Feature articles and other mentions about MPI have been increased in the local, regional and business press. In fact, MPI has been regarded as the voice of the industry and quoted in the Wall Street Journal, USA Today, and NBC Nightly News with Tom Brokaw.

7. The MPI Canadian Council signed a joint agreement with the Canadian government, which includes a million dollar, cost-share project, establishing occupational standards for the meetings profession and industry in Canada.

8. MPI, through the association and its chapters, assists its members in developing leadership skills with more than 800 members being involved in volunteer leadership roles. The MPI International Planner and Supplier of the Year are recognized as the "best of the best" in the industry. (Our chapter Planner of the Year is Diane Smith; O.D. O'Donnell is D/FW Supplier of the Year.)

9. MPI has continued to support "Give Kids the World" with donations of more than \$200,000 (\$9,780 came from the D/FW chapter). MPI was awarded the Humanitarian Award by *Successful Meetings* magazine for its work with this organization.

10. MPI is committed to international growth. Our European Bureau, led by Robin Lokerman, has experienced some incredible expansion. Currently we have one chapter in Italy and three clubs in Bavaria, Brussels, and United Kingdom. Our first European Conference was successful and paved the way for additional membership growth and program development. (The D/FW chapter initiated the first Giamelli (Twin) Chapter program with the Italia Chapter to further develop international ties.

This is only a small part of what MPI has recently accomplished. It doesn't stop here because we will *keep getting better!* Through the efforts of TEAM MPI, Together Everyone Achieves More!

Call one of your chapter officers and volunteer today. We need you on the TEAM!

*Looking for a
new challenge?*

*Seeking a
qualified applicant
to fill a position?*

Check out
D/FW MPI's

JOB BANK

Contact
Jeff Means, CMP
Chairman, D/FW MPI Job Bank
3018 Sierra
Carrollton, Texas 75007
214-717-1400
FAX 214-717-1624

Handling Fee
\$15 Members
\$25 Non-Members

All inquiries are confidential.

D/FW MPI

**Brown Bag
Lunch**

**Oct. 26/Tuesday
11:30 a.m.-1p.m.**

**"What Planners
Need to Know
about Suppliers"**

Arlington Hilton
details on page 4

Heard it through the Grapevine...

By M.T. Gnad
National Business Association

Sherri A. Cook, *Sherri Cook & Associates*; **Judy Benaroche**, *Sunbelt Motivation & Travel, Inc.*, and **Barbara Derksen**, *American Electronics*; recently earned the Certified Meeting Planner (CMP) designation. Congratulations!

Amanda M. Oglesby, director of marketing at *The Guest Lodge at Cooper Aerobics Center*, earned her red belt in Korean Tae Kwon Do; she will now begin work on the black belt.

Congratulations to the staff of the **Adolphus Hotel** for receiving the Pinnacle Award for the sixth straight year! The award, presented by *Successful Meeting Magazine*; is based on surveys completed by meeting planner readers.

Carmen Murphy, CMP moved from Austin to become the meeting and exhibits manager for the *Associated Locksmiths of America*.

Dana L. Nickerson, CMP, RMP, president of *Square One Productions*, has been named chairperson on the 1993 SBCA Furball fundraiser. The event will take place Oct. 16 at Plaza of The Americas Hotel.

Donna Davis is the new administrative assistant for *The Freeman Decorating Company*; she was formerly with MADD.

Sherry Jenkins is the new manager of conferences and special events for the *American Fire Sprinkler Association*.

Debbie Small has been promoted to assistant events manager for the *Society of Petroleum Engineers*. This

promotion comes after three years with the organization where her most recent position was meeting coordinator.

Congratulations to the staff of **The Guest Lodge at Cooper Aerobics Center** for being named official headquarters for the World Cup referees.

Phyllis Tackitt has accepted the position of events coordinator for the *Tower Club*.

Karen Southern is the non-corporate sales manager for the Harvey Hotel Plano. She was formerly with the Harvey in Amarillo.

Sonya North Wharton has been named corporate events planner for *Central & South West*. Prior to this she was with Micrografix Inc.

Keep up with personal news about fellow MPI chapter members—job changes, promotions, awards or special recognitions, weddings, or births—through "Heard it through the Grapevine." Please contact Mary-Therese Gnad (214-991-5381 or FAX 214-960-9149) about items of interest for this column.

A meeting at a hotel.

Or a conference at The Scanticon.

It looks different. It sounds different. It is different.

It's more than a hotel, it's The Scanticon Denver.

With a unique meeting environment offering

unparalleled conference rooms and such attention to detail



as natural light and fatigue-free chairs. Plus conference managers dedicated to coordinating every aspect of your meeting. It's The Scanticon difference. It's why more than 80% of business meeting planners who have experienced

The Scanticon return to us again and again. It's why you'll return. It's why we say that to experience the first-class service of The Scanticon is to never again be satisfied with an ordinary hotel.

It's more than a hotel. It's

The Scanticon

D e n v e r

200 Inverness Drive West I-25 & County Line Road
Englewood, Colorado 80112 303-799-5800 or 800-346-4891



Inverness
Golf Club
The Scanticon
Denver



A WORLD CLASS FACILITY A GLOBAL COMPANY AN INTERNATIONAL CITY

A TRULY GOLD MEDAL PERFORMANCE!
THAT'S WHAT YOU CAN EXPECT WHEN YOU
COMBINE DEDICATED CONFERENCE SERVICE
SPECIALISTS HAVING MORE THAN 30 YEARS'
COMBINED EXPERIENCE, AN AWARD
WINNING CULINARY STAFF, STATE-OF-THE-
ART AUDIO VISUAL/TECHNICAL SUPPORT,
AND A LEADING EDGE PHILOSOPHY... WITH A
LUSH WOODED WATERFALL GARDEN



SETTING IN NORTH ATLANTA'S PRESTIGIOUS
PERIMETER AREA. AN UNPARALLELED ENVI-
RONMENT FOR YOUR NEXT MEETING. WE
OFFER 495 ROOMS AND SUITES WITH 30,000
SQUARE FEET OF MEETING SPACE ACCOMMO-
DATING UP TO 1200 PEOPLE. TO OBTAIN
ADDITIONAL INFORMATION OR TO ARRANGE
A SITE INSPECTION, CALL OUR SALES
DEPARTMENT AT (404) 395-7700.

Holiday Inn
CROWNE PLAZA
ATLANTA

THE BUSINESS CLASS HOTEL.™



© 1993, Holiday Inns, Inc.

MPI

MEETING PLANNERS INTERNATIONAL®

Meeting Planners International is the world's largest association of meetings professionals with more than 12,000 members in 42 countries and 49 chapters and clubs. MPI's mission is to provide educational opportunities and recognition for those in the meetings industry. The association is committed to excellence in meetings, continuous international growth, research, a strong chapter network and high ethical standards.

MPI Internat'l Headquarters
INFOMART
1950 Stemmons
Suite 5018
Dallas, Texas 75207-3109
214-712-7700

MPI
Dallas/Fort Worth Chapter
10875 Plano Road
Suite 115
Dallas, Texas 75238
214-343-0555

Officers

President
Lesley Meyer, CMP
Sunbelt Motivation & Travel
214-401-0210

President-Elect
Diane Smith, CMP
Alcon Laboratories, Inc.
817-551-8077

Vice President/Administration
Paige Braun
DalCity Associates, Inc.
214-233-9070

Vice President/Education
Michelle Carter
Dallas Convention & Visitors Bureau
214-746-6656

Vice President/Membership
O.D. O'Donnell
Nightlife Talent & Mgt. Agency
214-691-4417

Vice President/Programs
Sue Ferguson-Fry
Cityplace Conference Center
214-841-6830

Vice President/Finance
Carmyn Carey, CMP
Allianz Life Insurance Co. of No. America
214-978-7119

Vice President/Public Relations
Steve Kemble
Steve Kemble Event Design
214-943-5029

Immediate Past President
Mary W. Cowart
Mary Cowart Meeting Consultants
214-248-4429

Board of Directors

Planners
Sherri Cook, CMP
Sherri Cook & Associates
214-394-8688

Alexandra Vurpillat
Carey Limousine
214-638-4828

Cathy Mason
USMotivation
817-540-9845

Phyllis Tackitt
The Tower Club
214-220-0403

Suppliers
Charlotte Merrill-Davis
Event Source Professionals
817-267-6698

Mary Lynn Novelli
Travel Resource/Sterling Hotels
214-556-2151

Linda Sargeant
Bill Reed Decorations, Inc.
214-823-3154

Patrice Tripp, CMP
Princess Cruises & Tours
800-421-4725

CURRENT Staff

Editor
Gracie Hatfield Hilton
The Write Stuff
Phone & FAX 817-467-7439

Advertising Director
Stephanie Davis
Sheraton Park Central Hotel
214-551-2115
214-551-2115

OCT 15 1993

PM
DALLAS
OCT 15 1993
POSTAGE
0.75
TEXAS
6534-184

MPI

MEETING PLANNERS INTERNATIONAL

The BEST keeps getting BETTER

DALLAS/FORT WORTH CHAPTER