

CURRENT

Meeting Professionals International

July 1994

Dallas-Fort Worth Chapter

President's Message

New Chapter President Issues Challenge—to Surpass Ourselves!

By Diane Smith, CMP
Alcon Laboratories, Inc.

The success of any organization—whether a corporation, association, family business—can be measured by its people. That's certainly true of the Dallas/Fort Worth Chapter of MPI.



Diane Smith, CMP

Through involvement and commitment, our chapter members have proved time and time again to be totally supportive of MPI's mission—to promote education, programming, community service, and increase global awareness of our industry.

Thanks to outstanding leadership and dedication, our chapter is viewed as a "model" by other MPI chapters worldwide. We have worked hard to earn this respect and it has paid off.

President Lesley Meyer,

CMP (Sunbelt Motivation & Travel, Inc.) urged us to join together and become a **TEAM** in order to achieve our goals. With her guidance we did just that—most effectively. For her leadership and constant support she has our sincere gratitude.

Mary Cowart (Mary Cowart Meeting Consultants) leaves the board this year after serving as immediate past president. In encouraging us to "Get into the Act," Mary really got the ball rolling on involvement. For this, we are forever in her debt.

My personal thanks go to each member of the '93-'94 board for their tireless efforts on behalf of this chapter. With gratitude and respect I salute them. Their hard work and

(continued on page 14)

MPI

MEETING PROFESSIONALS INTERNATIONAL®

July D/FW Chapter Meeting

"Contract Bound"

featuring

Steven M. Rudner

July 28, Thursday

DFW Hilton

Executive Conference Center

1800 Highway 26-E

Grapevine, Texas 76051

817-481-8444

Orientation 11:00 a.m.

Reception & Registration 11:30 a.m.

Luncheon & Program 12 noon

R.S.V.P.
by noon, Tuesday, July 26
Sandi or Jennifer
214-343-0555

Advance Registration \$22
Late Registration \$30
Guest Registration \$25

See page 3 for more details and meeting reservation policy.

INSIDE

President's Column

1

The Lone Star LINK UP

8

July Meeting Info

3

News Briefs

10

Last Month's Meeting

4

Diane Smith, CMP/Profile

11

Bill Boyd, CMP/Profile

6

'Grapevine' News

13

CURRENT

Meeting Professionals International
Dallas/Fort Worth Chapter

Newsletter Staff

Editor

Gracie Hatfield Hilton
The Write Stuff
Phone & FAX
metro 817-467-7439

Vice President/Public Relations

Mary Lynn Novelli
Sterling Hotel Group
214-402-4875
FAX: 214-402-4889

Advertising Chair

Stephanie Davis
Sheraton Park Central Hotel
Phone: 214-851-2016
FAX: 214-991-4557

Photographer

Mark Lazarow
Mark Lazarow Photography
214-380-0985
FAX: 214-380-1431

The *CURRENT* is published 12 times yearly for the D/FW Chapter of Meeting Professionals International, the industry's leading educational and networking resource in meetings management. Statements of fact and opinion are the responsibility of individual writers and do not imply collective opinion of the officers or members of MPI.

CURRENT Deadlines

Upcoming deadlines for copy and ads for the D/FW MPI chapter newsletter, the *CURRENT*, are as follows:

ISSUE	DEADLINE
August '94	July 15, Friday
September '94	August 12, Friday
October '94	September 16, Friday

Please mail or FAX copy to Gracie H. Hilton, *CURRENT* Editor, 3020 Glasgow Court, Arlington, TX 76015, phone & FAX: (metro) 817-467-7439.

Whenever possible, please send information on 3.5 disk, preferably in WordPerfect or Microsoft Word format.

Copy is cheerfully accepted early. *Because of production schedules, information received after 5 p.m. on the deadline day will not be included in the newsletter in progress. Late-arriving copy will be included in the next month's issue, if information is still timely.*

Upcoming MPI Events

July 28, Thursday

Chapter Meeting
DFW Hilton Executive Conf. Center
11:30 a.m./Lunch

August 5-7

Friday-Sunday
Texas Chapter Retreat
Arlington Marriott

August 8-16

MPI Institutes I & II
Dallas

August 25, Thursday

Chapter Meeting
"Site Selection"
Plano Centre
11:00 a.m./Lunch

September 22, Thursday

Chapter Meeting
"MPI Natural Resources"
INFOMART
11:00 a.m./Lunch

NOTE: Chapter meeting plans are subject to change. Check the CURRENT each month to confirm details.

C H A R I T Y

O

R

N

E

R

By Mary Lynn Novelli
Sterling Hotel Group

1994-95 Charity Plans

New chapter officers and directors assume their responsibilities in July—we're off to another terrific year!

As we begin this new administrative year, your leaders are examining various charity projects, and you'll be hearing details about these projects soon.

Plan now to become involved. You'll be glad you did!



Mary Lynn Novelli
ACE Chairperson

The Kids Charity Ball—1995 ACE, One More Time!

"The Kids Charity Ball" will, once again, be the 1995 Annual Charity Event. An early start will ensure an even more terrific success than the

1994 ACE, which raised \$51,000 for "The Kids."

We're looking for volunteers at all levels. It's all about helping the "Kids," so get involved!

For more information about volunteer opportunities, contact Mary Lynn Novelli, 214-402-4875.

July Meeting Highlights

'Contract Bound' is Theme of July Chapter Meeting at DFW Hilton Executive Conference Center

By Sally Goldesberry, CMP
American Society of Mechanical Engineers

The program at the July 28 D/FW MPI Chapter luncheon meeting, hosted by the DFW Hilton Executive Conference Center,



will focus on the importance of being knowledgeable about ongoing changes regarding legalities in hotel and facilities contracts.

Guest speaker is Steven M. Rudner, recently recognized by *Successful Meetings* magazine as one of five prominent attorneys in the United States specializing in meetings and industry and hotel issues.

A partner in his Phoenix-based law firm, O'Connor Cavanagh, Rudner is director of the firm's hospitality law section. His practice includes issues relating to convention and meeting planning, contract negotiations, and convention cancellation.

He represents Hyatt Hotels Corporation, Princess Hotels International, and Loews Corporation, as well as numerous other hotel companies, conference centers, management companies and independent properties.

A frequent speaker on convention contract negotiations and cancellation issues, Rudner is a guest lecturer at the William Harrah College of Hotel Administration at the University of Nevada, Las Vegas.

The program, "Contract Bound," will focus on issues important to meeting professionals. Rudner will explain why there is a lack of expertise about contracts in a time when that expertise is critical. He will discuss the difference between cancellation and termination clauses, and point out new legislation planners should be aware of when drawing up a contract.

New member orientation is at 11:00 a.m. Registration and a reception will begin at 11:30 a.m. The luncheon and

program will begin at 12 noon.

Co-chairs for the July meeting are Marilyn Manby (Event Source Professionals), Sally Goldesberry, CMP (American Society of Mechanical Engineers), Lisa Shillings (Southland Center Hotel) and Sandra Summers (Jerell, Inc.).

Facility hosts at the DFW Hilton Executive Conference Center include Tamara Adkins, sales manager; and Mike McGauhey, director of catering.

July Host Facility

DFW Hilton Executive Conference Center

Rated among the "Top Ten Conference Centers" in the country, the DFW Hilton Executive Conference Center was also recently named "Hilton Hotel's Franchise Property of the Year."

Situated along a private lake, the center features 395 spacious guest rooms and suites and a myriad of recreational facilities.

With easy access to DFW International Airport, the DFW Hilton Executive Conference Center—with its extensive conference and meeting facilities—caters to corporate groups as well as discerning individuals.

Conference facilities include a 9,600-square-foot ballroom, a 14,000-square-foot exhibit area, and 33 state-of-the-art conference rooms.

Three tiered amphitheatres, equipped with rear screens and executive-style conference chairs, seat 40-240.

The property-managed multimedia/audio visual business center offers immediate assistance 24 hours a day.

Recreational facilities include tennis courts, indoor and outdoor pools, racquetball/wallyball courts, jogging trails, aerobic classes, and an extensive sports club with more than 20 brand-new Nautilus training stations.

For dining and relaxation the DFW Hilton has three restaurants, each featuring atmosphere and cuisine for various tastes. After hours, Chisholm's lounge and The Club Bar are popular gathering spots.

The DFW Hilton Executive Conference Center, 1800 Highway 26E in Grapevine, is situated just minutes north of DFW International Airport, one block west of the Bethel Road Exit.

Self-parking is complimentary. Valet parking is \$3.

Travelers on Highway 114 or I-635/LBJ: • take Highway 121 north and exit Bethel Road. Turn left (west), proceed to the 2nd light. Turn right (north) Highway 26E. The DFW Hilton's main entrance will be on the left.

Travelers from far north Dallas/Plano: • take Highway 121 south through Lewisville. Exit Highway 26E/Grapevine. The DFW Hilton's main entrance will be on the right.

Meeting Reservation & Attendance Policy

Registration fees will be collected at the door; advance payments are not accepted. If paying by check, please have check completed before approaching registration table. Reservations must be made by RSVP deadline for advance registration fee to apply. Late reservations and walk-ins will be accepted on a SPACE AVAILABLE basis. Cancellations must be made by the RSVP deadline. **No-shows will be billed.** Members are responsible for "no-show" charges for their guests. Guests are limited to attending three meetings per year (spouses are an exception).

July Meeting Highlights

Fitness, Fun and Low-Fat Food Feted at Cooper Aerobics Center



Co-chairs for the June meeting at Cooper Aerobics Center (CAC) were **Stephanie Staubach** (Personalities International), **Amanda Willbanks** (The Guest Lodge at CAC), **Sherri Cook, CMP** (Sherri Cook & Associates) and **Kathi Thompson** (Inn on the River). Posing with them is the mascot for World Cup Soccer. The Guest Lodge at Cooper Aerobics Center was the home base for 46 international soccer referees as matches took place all over the USA in June.

Photos by Mark Lazarow Photography



ABOVE: **Kenneth Cooper, M.D.**, is known internationally as the "Father of Aerobics." His 11 books have sold more than 20 million copies in 41 languages and Braille. A twelfth book will be published this summer.

BELOW: When rain threatened the outdoor event, participants moved indoors to hear Dr. Cooper's presentation. Cooper Aerobics Center has eight meeting rooms, ranging in size from 500-2,800 square feet, to accommodate groups from eight to 250 people.

Cooper Aerobics Center Flavor Favorites from June Meeting

Guilt-free Guacamole

- 1/2 cup canned green peas
- 2 tablespoons fat-free mayonnaise
- 1 tablespoon lemon juice
- 1/4 medium avocado, mashed slightly
- 1/2 cup chopped tomato
- 1/4 cup finely chopped onion
- 1 tablespoon salsa
- 1/4 teaspoon garlic salt
- 1/4 teaspoon chili powder

Position knife blade in food processor bowl. Rinse peas with cool water for two minutes and drain. Add peas, mayonnaise and lemon juice. Process until ultra smooth. Transfer to a mixing bowl; stir in avocado and all remaining ingredients. Cover and chill for at least one hour. Adjust seasonings as desired. Serve with baked tortilla chips.

YIELD: 1 1/2 cups. 16 calories, 1 gm fat per 2 tablespoons serving.

Fat-free Hot Fudge Pudding Cake

- 1 1/4 cup sugar, divided
- 1 cup flour
- 7 tablespoons cocoa powder, divided
- 2 teaspoons baking powder
- 1/4 teaspoon salt
- 1/2 cup skim milk
- 1/3 cup applesauce
- 1 1/2 teaspoon vanilla
- 1/2 cup brown sugar, firmly packed
- 1 1/4 cups hot water

Preheat oven to 350 degrees. In medium bowl, combine 3/4 c. sugar, flour, 3 T. cocoa powder, baking powder, and salt. Blend in milk, applesauce, vanilla; beat until smooth. Pour into 8 or 9 inch square pan. In small bowl, combine remaining 1/2 c. sugar, brown sugar and remaining 4 T. cocoa powder. Sprinkle mixture evenly over top. Pour hot water over top; do not stir. Bake 40 minutes or until the center is almost set. Let stand 15 minutes. Spoon into dessert dishes, spooning sauce from bottom of pan over top. Garnish with strawberries and powdered sugar (delicious served with fat-free frozen yogurt.)

YIELD: 10 servings. 192 calories, 0 gm fat per 1/2 cup serving.





Peter Studebaker (MAGIC Tradeshow Promotions) and new member **Kathleen Hournasidis** (Stockyards Hotel) take time out for some self-directed teambuilding exercises at the June chapter meeting.



D/FW Chapter Presents \$50,000+ to Love for Kids and Give Kids the World

Special guests at the June chapter meeting at Cooper Aerobics Center were **Steve Crane** (Love for Kids) and **Victoria Dunn** (Give Kids the World.) Crane and Dunn were present to accept checks for the charities—funds raised at The Kids Charity Ball. In photo at top, **Crane** receives check for Love for Kids from **Greg Pynes** (Town of Addison) and **Dana Nickerson, CMP** (Square One Productions). In second photo, Pynes, center, and Nickerson, right, present check to Dunn for Give Kids the World. Pynes and Nickerson served with Mary Lynn Novelli (Sterling Hotel Group) as co-chairs of The Kids Charity Ball. (Novelli could not be present for the meeting.)

LEFT: "With the wind and rain in her hair," **Lesley Meyer, CMP** (Sunbelt Motivation & Travel, Inc.) presided over her 12th and final meeting as D/FW Chapter president. Wind and a light rain threatened the outdoor meeting. While dinner guests, largely protected by spreading tree branches, stayed relatively dry, early program presenters were more than slightly dampened by the precipitation. They were of good cheer, however, citing the rain's beneficial effects on the heat index that topped 100 degrees.

BELOW: **Charlotte Merrill-Davis** (Event Source Professionals), **Diane Smith, CMP** (Alcon Labs), **Luis Sanchez** (Arlington Marriott), **Jan Pollard** (Omni Hotels National Sales Office), **Marcie Roitman** (Grapevine CVB), and **Michelle Carter** (Dallas CVB) encourage D/FW Chapter members to register for Lone Star LINK UP, the Second Annual MPI Texas Chapters Retreat. (See related article, page 9.)



THANK YOU!

Many thanks to the individuals and companies whose time, talents, and expertise contributed to the enjoyment of the June meeting. They include: featured speaker • **Dr. Kenneth Cooper** of the • Cooper Aerobics Center (CAC), • **Gonzalo Ingle, Jr.** of the Guest Lodge at CAC, • **Sheri Chambers** of the Cooper Fitness Center and • **Brad Grupp** of AVW Audio Visual. Contributing to the centerpieces were • **Ginny Paxton** (Ginny's Gifts), • **Drew Pearson** (Drew Pearson Companies), • **Don Doud** (Dole Fresh Vegetable Company) • **Andrea Eyler** (Dallas Sports) and • **Carrie Arnold** (MCI Telecommunications).

Former D/FW Chapter President Leads at International Level

J. William Boyd, CMP: Putting 'Heart and Soul' into His Role as MPI President

By Tina Berres Filipski
Editor, *The Meeting Manager*

Talk to MPI's new President J. William (Bill) Boyd, CMP and feel the energy and excitement in his words when he talks about MPI and its future.



Bill Boyd, CMP
MPI President

Boyd, president/CEO of Sunbelt Motivation & Travel, Inc. near Dallas—and a long-time member and leader of the D/FW Chapter—began laying the groundwork for his year as president months ago.

Among his goals as president of the international association is to visit as many chapters as possible. Before taking office on July 1, Boyd had visited 20 MPI chapters. His objective: to talk a bit, but most of all, to listen.

"Eighty percent of our members know MPI only at a grassroots level," he says. "I want to make contact with our chapters and listen to what they have to say. The chapters are where it is happening."

Sunbelt Motivation & Travel, Inc.

Boyd is a big believer in hands-on management—getting out among the masses, shaking hands, listening to the needs of the people he serves. He takes the same approach with Sunbelt, his highly successful company headquartered in Las Colinas.

Sunbelt provides program planning, incentive travel, meeting and conference planning, promotions and leisure and business travel through 130 employees in offices across the U.S.

Boyd founded Sunbelt in 1980 on three basic principles: •professionalism, •attention to detail, and a •commitment to do the job right. It is a philosophy he applies to his business on a daily basis.

Although Boyd calls the final shots for the \$70 million company, a management council, consisting of all vice presidents, directors and managers, meets quarterly to make policy decisions. Like other management employees, Boyd takes his turn at kitchen duty—a complete scrubdown of the break room.

Boyd's Evolving Career

A native of Baytown, Texas, Boyd launched his career in 1969, as a stamp redemption manager for Top Value Enterprises headquartered in Dayton, Ohio. He went into it with both eyes open and a lot of excitement, he said, but soon realized his main responsibilities were unloading trucks and restocking shelves.

He tried to resign, but came away with a promotion instead—as a travel director for the company's incentive travel division. After an enjoyable year and eight months on the road, he was ready for another challenge; he moved into sales and quickly moved up through the organization.

In 1975, he returned to Texas, as vice president of sales for Vanguard Incentives; several years later he was named president. A short time after the company was sold in 1979, Boyd opened Sunbelt.

'MPI will clearly emerge as the leading organization for meeting professionals.'

'MPI should remain a vital, integral part of a total that's much larger.'

D/FW Chapter Leader

Active in MPI since 1979 and a member of the International Board of Directors since 1991, Boyd has served the MPI Dallas/Fort Worth Chapter

in numerous leadership roles, including the presidency in 1988-89.

Under his leadership, the Dallas/Fort Worth Chapter won its first Chapter of the Year Award—and captured the honor a second time the following year.

Norb Dettmann, CMP, PhD, fellow member and past president of the MPI Dallas/Fort Worth Chapter, describes Boyd as a charismatic leader with good business insight—a man who was able to put the chapter on solid financial footing during his presidency.

"Through his business expertise, Boyd was able to lift our chapter to a new level; he brought real organization," Dettmann said.

A firm believer in volunteerism, Boyd has served on

the board of directors for the local charity, Love For Kids; the Advisory Council of the Southwest Family Institute; and as a periodic volunteer for Stew Pot, Meals on Wheels and North Texas Food Bank.

Presidential Priorities

Boyd is candid about his priorities as president—and it's clear he plans to put



Bill Boyd, CMP, on a veldt in Tanzania, spent a month on safari in Africa last summer.



Coronado Cays at San Diego is a frequent vacation spot for the new president of Meeting Professionals International. Here, Bill Boyd, CMP, indulges in a favorite pastime—sailing in San Diego Bay.

heart and soul into the job.

"I want to spend the year strengthening alliances," he said—not only between MPI headquarters and chapters—but among sister organizations such as ASTA, SITE, IAEM, ASAE and PCMA.

"Meetings, conventions, expositions and incentive travel are 17th on the list of industries most important to the U.S. gross national product. But travel and tourism, of which MPI is a part, is the third largest."

Boyd firmly believes that MPI should remain "a vital, integral part of a total that's much larger."

A result of this conviction is a plan to work with ASTA and SITE to develop joint educational programming, particularly regional sessions designed for the travel agent community.

Boyd also plans to continue MPI's global expansion—an effort supported by Coleman, CMP, MPI's immediate past president, during his term in office. Boyd sees numerous opportunities for membership growth, particularly in Europe, Mexico and Australia.

Boyd believes one of the biggest challenges facing the industry today is strength-

ening the image of the meeting professional's role. When the meeting professional is seen as integral to the organization—part of the team sharing the company vision—that position is not as likely to be eliminated in a downsizing, Boyd said.

Presidential Vision

Boyd doesn't hesitate when discussing his vision for MPI in the next five years.

"MPI will clearly emerge as the leading organization for meeting professionals," he said. "Right now it is the largest, but it will be abundantly clear, in the next two to three years, that MPI is the leader."

He believes MPI will be a key voice of the travel

and tourism industry as a result of developing key alliances. He explains the process as a jelling of all segments of the travel and tourism industry with MPI an integral part of that process.

He gives much of the credit for MPI's meteoric rise to a cohesive executive committee, board of directors and staff, but most of all to MPI's Executive Vice President/CEO Ed Griffin, Jr., CAE, who joined the organization in late 1990.

'MPI, through developing alliances with sister organizations, will be a key voice of the travel and tourism industry.'

"With Griffin, we have a CEO who is a competitor and that's what we needed. He wants nothing less than the best for this organization. If that means listening, hours of debate, developing programs that may be shot down, he's willing to do that," Boyd says.

Philosophical Favorites

Whether he's growing a chapter, a company, a global association, or the orchids he adores, Boyd applies philosophies learned from two people he admired.

Much of his inspiration for success comes from a good friend, the late Greg Liemandt, chair of UCCEL Corporation. "He taught me the toughness of business," Boyd says of Liemandt.

Boyd says his outlook on life is inspired by the writings of the late American author and lecturer, Helen Keller. A favorite is prominently displayed in his office. In part, it reads:

"... Never doubt the excellence and permanence of what is yet to be. Join the great company of those who make the barren places of life fruitful with kindness. Your success and happiness lie in you..."



Tina Berres Filipski is editor of The Meeting Manager and director of publications for MPI.

MPI

MEETING PLANNERS INTERNATIONAL®

DALLAS/FORT WORTH CHAPTER

PRESENTS

Lone Star

LINK UP

WORTHINGTON

Hard Rock CAFE

WEST END MARKETPLACE

Six Flags Over Texas
A Time Warner Entertainment Company

INFOMART.

ARLINGTON TEXAS
Arlington Convention & Visitors Bureau

Marriott
ARLINGTON

FORT WORTH

WE'VE GOT IT DALLAS
Dallas Convention & Visitors Bureau

MPI TEXAS CHAPTERS RETREAT
AUGUST 5-7, 1994



Metroplex Retreat Set August 5-7

D/FW Chapter to Host Second Annual MPI Texas Chapters Retreat—the Lone Star LINK UP

By Pat McCain
Krisam Group

The Dallas/Fort Worth Chapter of MPI will host the 1994 Texas Chapter Retreat August 5-7. With headquarters at the Arlington Marriott Hotel, Lone Star LINK UP events will take place in various sites around the Dallas/Fort Worth metroplex.

The program agenda brings together four nationally-prominent speakers, outstanding local entertainment activities, interesting exhibits, and unmatched networking opportunities. Exhibitions and tours will introduce participants to important resources and experienced suppliers.

Focusing on critical topics facing the meetings industry, the Lone Star LINK UP offers continuing education topics highlighting ways of being more productive, achieving higher levels of success, and understanding how to develop stronger relationships.

Friday, August 5

Early arrivals may enjoy a golf outing at Bear Creek Golf Club Friday morning. Green fees, cart, beverages, and transportation to and from the Arlington Marriott are included in the golf registration fee.

Registration for the retreat begins at noon Friday, August 5. At 3:00 p.m. Diane Smith, CMP, president of the D/FW Chapter of MPI, and Edwin L. Griffin, Jr., CAE, executive vice president and CEO of MPI, will team up to welcome attendees to the retreat, followed by an afternoon of stimulating presentations.

Don James, one of America's leading authorities on the development of high performing organizations, will give the keynote address: "School Is Never out for the Professional." Tony Brigmon, a high en-

ergy speaker with an entertaining twist, will ask, "Are You Having Fun Yet?"

On Friday evening the Dallas Hard Rock Cafe and historic West End Marketplace will host retreat participants on a lively excursion to Dallas.

Saturday, August 6

Saturday events begin with a 9:00 a.m. breakfast session hosted by Dallas Convention & Visitors Bureau and Dallas Market Center Catering at Infomart, Texas' technology showplace, in the facility's atrium. Maura Beatty, a nationally renowned speaker, trainer and consultant, will conduct her trademark seminar, "Can You Hear Me Talking?"—a presentation that could change your way of thinking about communicating with clients, business associates—even your family!

Next, suppliers from the D/FW MPI Chapter—representing all aspects of meeting planning—will exhibit at a small, but complete trade show. This is a great time to meet the best suppliers in the business and exchange business cards!

Combined with the trade show is an opportunity to tour the MPI Resource Center—more time for attendees to network and learn about sources of meeting planning assistance.

Lunch will be a "Picnic in the Park" at Six Flags Over Texas. The leisurely afternoon agenda includes free admission to this noted amusement park in Arlington.

Saturday evening festivities are centered around downtown Cowtown—also known as Fort Worth. The Grapevine Convention and Visitors Bureau will sponsor a heel-kickin' reception and the Worthington Hotel will host a western-flavored dinner. Look forward to the best country music,

boot-scooting, and bull-riding in Texas!

Sunday, August 7

Sunday's more leisurely schedule begins with a 10:00 a.m. brunch at the Arlington Marriott. In the closing general session, Randy Pennington, a nationally recognized expert in workplace, leadership, and integrity issues, will present "Rethinking The Path To Success"—an invaluable tool in managing your career for prosperity!

The retreat will officially be adjourned at 11:45 a.m., but plan to stick around for a special treat Sunday afternoon—a private tour of "The Ballpark In Arlington," the brand-new home of the Texas Rangers. To register for this special complimentary hour-long tour, please sign up when you register for the retreat.

Register NOW!

Don't miss this opportunity to LINK UP with fellow MPI members for an outstanding educational and entertaining experience. Reserve your "Retreat Seat" by sending in your registration form today!

Registration for the conference is \$65 per person. Children may be included in the recreation activities for a registration fee of \$30 per person. Registration for D/FW exhibitors is \$150.

Registration for the Friday morning golf outing at Bear Creek Golf Club is an additional \$65 per person. Please sign up when you register for the retreat.

A four-page descriptive brochure was mailed to chapter members in May. Questions? Call the Lone Star LINK UP Hotline at 800-232-1022 (or 214-746-5678).

Hotel reservations can be made through the Arlington Marriott reservation desk, 800-442-7275. Please call during business hours to obtain the special daily rate of \$69.





News Briefs

News of Local Interest

MPI Members Invited to Showcase Featuring Presentation Technology

INFOMART and Bauer Audio Visual, Inc. invite MPI members to "1994 Presentations Showcase" August 19. The showcase is designed for persons interested in learning more about new presentation technology designed for meeting professionals.

The following products will be showcased:

- **Delphi**—"ultimate organizer" software; "perfect" for sales and catering managers
- **PictureTel**—featuring the latest in video conferencing capabilities
- **D Animation, Inc.**—exploring the world of multi-media
- **nView**—the leading manufacturer of data projection products and presentation technology
- **Bauer Audio Visual, Inc.**—providing technical tips

Registration will begin at 11:30 a.m. The program will begin promptly at noon. After brief presentations by various speakers, participants will have the opportunity to visit informally with the presenters.

A complimentary light lunch will be served.

To pre-register for the 11:30 a.m.-2:00 p.m. event, phone 214-746-5678

INFOMART is situated at 1950 Stemmons Freeway, Dallas, TX 75207. The showcase will take place in Room 1060.

Take Advantage of Professional Growth Awards!

Did you miss the Professional Education Conference because it was not in your budget?

Did the cost of obtaining your CMP keep you from taking the next step in your career?

Did you miss a relevant executive workshop because of registration fees?

Don't miss out! Professional Growth Awards (PGA) lends a hand to members who want to further their careers through educational sessions.

With the generous donations from monthly raffles, members of the D/FW chapter enable the PGA Committee to provide financial support to qualified members.

For PGA applications, call Kyle Smith (Four Seasons Resort), 214-717-0700. Applications are also available at each monthly meeting.

International News

Chapter Manager Workshops Scheduled July 29-31 in Dallas

Chapter managers will meet in Dallas July 29-31 for Chapter Manager Workshop sessions at The Doubletree Hotel Park West.

The workshops are designed for education/program chairs, treasurers, membership chairs and newsletter editors.

Attendees from the D/FW Chapter are Sherri Cook, CMP (Sherri Cook & Associates), v.p./membership; Charlotte Merrill-Davis (Event Source Professionals), v.p./education; Catherine M. Mason (USMotivation), v.p./programs; and Gracie Hatfield Hilton (The Write Stuff), newsletter editor.

Conferences Set for Baltimore in 1997 and Orlando in 1998

The MPI Board recently named Baltimore and Orlando as sites for 1997-98 conferences

The 1997 Annual Convention will be in Baltimore, MD at the Baltimore Convention Center, July 27-29.

The 1998 PEC will be at the Marriott World Center in Orlando, FL, January 25-27, 1998

DOLLAR\$ & CENT\$ D/FW Chapter/MPI

For the month ending May 31, 1994

Beginning of the Month	\$83,261.88
Income	22,938.22
Disbursements	(9,886.92)
EOM Balance	\$96,313.18*

*Includes \$10,000.00 PEC
Professional Education Conference

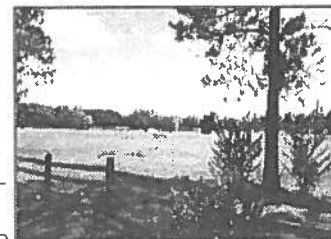
*Includes \$1,510.00 PGA
Professional Growth Award

*Includes \$53,442.66 ACE
Annual Charity Event

Report submitted by Carolyn Carey, CMP (Allianz Life Insurance Co.), vice president/finance.

Keep Your Meeting Within Range.

For company and association events, The Double Tree Ranch lends a country air within range of the Dallas and Denton areas - and your budget. Whether your group



numbers several hundred or a couple thousand, you've got the run of the ranch, including the lake, pool, ranch house and more. **Call today for a brochure and to check on open dates.**

DOUBLE TREE RANCH

214-317-5000 FAX 214-317-8491
310 Highland Village Road Lewisville TX 75067

Presidential Profile

Diane Smith, CMP is MPI D/FW Chapter's First Fort Worth President

By Gracie H. Hilton
The Write Stuff

When Diane Smith, CMP, was named president of the Dallas/Fort Worth Chapter of MPI for 1994-95, it marked the first time the chapter leader has had a Fort Worth address.

Since joining MPI in 1988, Smith never let 25-30 extra miles of driving keep her from being involved in chapter activities. She dived right in and volunteered for committees and projects and rarely ever missed a monthly meeting.

During the past seven years Smith has served the D/FW Chapter as vice president/administration, vice president/membership, director of education, interim board member and as an active member of a number of committees, including The Kids Charity Ball—which raised \$51,000 this year for Give Kids the World and Love for Kids.

Always seeking ways to promote more involvement among meeting professionals in Fort Worth—expect a call from Smith every spring, urging attendance at the annual meeting in “Cowtown”—she hopes that her presidency will encourage meeting professionals in Fort Worth, Arlington and the Mid-Cities to get involved in MPI.

“You can’t beat the terrific lineup of speakers, seminars and other top-notch educational sessions our chapter offers each month,” Smith says. “The difference is worth the distance.”

Home Builder Extraordinaire

For Kansas native and ace meeting professional Diane Smith, CMP, Professional Relations at Alcon Laboratories, Inc., a career as a meeting professional evolved after various intermediate vocational involvements.

Work in real estate development in her home city, Wichita, led to a career in construction in Overland Park — a job for which she says her childhood role as the oldest of five siblings was great preparation.

“All those years of telling my younger brothers and sisters what to do were great preparation for this job,” she says with a smile. “Now I had several teams of construction workers to boss around!”

It took time, but she eventually gained

their confidence, and together they built housing projects throughout the greater Kansas City area.

“My ‘dress for success’ outfit was boots, jeans and a hard hat, and I loved it!” says Smith.

Life never had a dull moment for this foreman-cum-meeting professional. As she built housing projects for others, Diane was building a “home model” — popularly known today as the “blended family” — of her own. Marriage to Jerry Don Smith — “Smitty” — brought three males into the lives of Diane and her daughter, Lisa, with the addition of Smitty’s sons, Keith and Craig.

‘Temporary’ Job Leads to Career as a Meeting Professional

When a career opportunity for Smitty eventually brought the Smith family to Fort Worth, Smith took on a “temporary” job through Kelly Services at Alcon Labs.

Smith’s employer convinced her that Alcon, a pharmaceutical company and international leader in ophthalmic research, was the place for her, and the rest is history.

“Soon, I was planning meetings for the Vision Care Group and, again, I was able to do what I enjoy most — telling people what to do!” Diane says of her early days at Alcon.

“I’ve always been the designated planner for family reunions, ski trips, and other get-togethers, so this was a natural for me.”

In 1992 Smith moved into the area of professional relations at Alcon, handling a myriad of programs the company provides to schools of optometry and ophthalmology all over the country. Alcon’s leadership in eye care research and worldwide sales means that she also plans meetings on the international level.

Smith was recently inducted into Vision Care’s Ring of Honor, recognition normally awarded to the division’s top performers in sales. Smith snagged the award for her contributions to the division over the past nine years.

“It’s an award I’ll always cherish,” she said.

D/FW Chapter Leadership

As president-elect—a position created by the D/FW Chapter just last year—Smith spent a year “in training” for her new role.

Her first “official” duty as president was organizing The Lone Star Link Up, the second annual Texas Chapter Retreat which will be held in the D/FW metroplex the first weekend in August.

Smith estimates that more than 125 Texas MPI members will participate in the event. (See related story, page 8.)

“I’m fortunate to be working with a crackerjack committee on the program,” Smith said. “We’re confident that this retreat will provide an outstanding educational opportunity for our chapter members—and will also attract fellow MPI members throughout the state.”

The Presidential Grandmother

Smith hardly fits the image of the stereotypical grandmother, but among their three children, she and Smitty are the proud grandparents of four granddaughters, ranging in age from nine months to four years.

“And another is on the way,” Smith reports. She and Smitty will become grandparents for the fifth time in November.

“I feel most fortunate and privileged to have such a wonderful family, an equally wonderful host of friends, and a fulfilling career,” Smith said.



Diane Smith, CMP, is surrounded by a bevy of granddaughters at a recent family get-together. Elizabeth and Olivia perch on their grandmother's knees. Lauren stands behind Taylor.

Editor's Notes

CURRENTly . . .

Meeting Professionals International, at both the chapter and the association level, puts on a fresh face this month, with new leadership, new programs and new ideas—and even a new name! Two of those fresh faces are featured in this issue of **CURRENT** in presidential profiles.



Gracie H. Hilton
CURRENT Editor

Our own **J. William (Bill) Boyd, CMP** (Sunbelt Motivation & Travel, Inc.)—long-time activist in the D/FW Chapter—was installed as president of MPI at the Annual Convention in Minneapolis last month. **Tina Berres Filipski's** profile of the first president of Meeting Professionals International is on page 6. Filipski is director of publications for MPI and editor of *The Meeting Manager*.

When **Diane Smith, CMP** (Alcon Laboratories) was named president of the D/FW Chapter, she became the first chapter president with a Fort Worth address. Read more about Smith on page 11.

At the recent Annual Convention in Minneapolis, the world's largest association of meeting professionals announced a name change. Meeting Planners International became Meeting Professionals International. You will see this new name reflected throughout this issue of **CURRENT**.

Apology-of-the-Month goes to **Lesley Meyer, CMP** (Sunbelt Motivation & Travel, Inc.) and **Diane Smith, CMP** (Alcon Labs). In an effort to showcase past, current and future chapter presidents—all of whom are CMPs—**CURRENT** photographer **Mark Lazarow** shot a terrific photo of this "Presidential Triumvirate." Unfortunately, the negative was "flopped" in the printing process, and two of our

leaders were misidentified. This month the neg was re-flopped, and the corrected photo appears on this page.

On the inside back cover of this newsletter you'll find a pictorial directory of the D/FW Chapter officers and directors for '94-'95. It's a clip & save reference you'll want to post near your phone or FAX machine. Many thanks to **Mark Lazarow** and **Debbie Holman** at Mark Lazarow Photography for supplying more than 90% of these photos!

What reaches almost 700 people monthly and increases your company's recognition among professionals in the meetings industry? Why, an advertisement in **CURRENT**, of course!

When planning your 1994-95 budget, be sure to include a few digits for an ad in the newsletter that chronicles the activities of the Dallas/Fort Worth Chapter of Meeting Professionals International.

For rates and more information call advertising chair **Stephanie Davis** (Sheraton Park Central Hotel), 214-851-2016.

Michael & Donna Cline of MC Graphics, printer of the **CURRENT** for the past two years, surprised us with a complimentary third color in last month's issue. Thanks, Mike & Donna, for the eye-catching red on the ad for The Lone Star LINK UP. We liked it so much, we repeated it in this issue. Read more about the Second Annual MPI Texas Chapters Retreat on pages 8-9.

The meal at last month's chapter meeting at Cooper Aerobics Center was a big hit, as it was both delicious and low in fat. Favorite menu items were the guacamole and the hot fudge chocolate cake. Thanks to our hosts, you'll find the recipes for these tasty treats on the June meeting recap pages.

Finally, a reminder—on page 2, in the bottom-left-hand-corner, you will find, each and every month, copy deadlines for the next three issues of the D/FW Chapter newsletter. Whenever possible, please send information for **CURRENT** on 3.5 DOS-based (Windows) system disk, preferably in WordPerfect or Microsoft Word format.

—ghh ☺

The 'P' in MPI Has New Meaning

Meeting Planners International (MPI), the world's largest association of meetings professionals, recently approved a name change for the organization. Henceforth, MPI will be known as Meeting Professionals International.

More than 3400 individuals (28% of the membership) cast a ballot on the name change, with 97.7% voting in favor.

This vote took place after MPI's Marketing Committee proposed the name change to the International Board of Directors last December.

The committee felt the change was necessary to properly recognize the development and maturation of the meetings industry as the association moves toward globalization, ever-increasing standards of professionalism, and an expanded mission.

MPI

MEETING PROFESSIONALS INTERNATIONAL®



Presidential Triumvirate—Past, Future and Current

Three CMPs—**Lesley Meyer, CMP** (Sunbelt Motivation & Travel, Inc.), **Phyllis Firebaugh, CMP** (A&C Enercom) and **Diane Smith, CMP** (Alcon Labs) are past, future and current chapter leaders. Meyer, president for the '93-'94 administrative year will serve as immediate past president. Firebaugh, center, was named president-elect, and Smith was installed as president for the '94-'95 year.

Directory Update

'New Kids on the Block'— D/FW Chapter Welcomes 14 New MPI Members!

Elaine V. Adams
Central & Southwest Corp.
1616 Woodall Rogers Fwy.
Dallas, TX 75266
(ph) 214-777-2864
(FAX) 214-777-2939
Planner

Bill Brown
Ramada Hotel Market Center
1055 Regal Row
Dallas, TX 75247
(ph) 214-634-8550
(FAX) 214-951-7463
Supplier

Linda H. Caldwell
Fairmont Hotel
1717 N. Akard
Dallas, TX 75201
(ph) 214-720-5294
(FAX) 214-720-5282
Supplier

Glenda M. Evatt
Alcon Laboratories
6201 S. Freeway.
Ft. Worth, TX 76134
(ph) 817-568-6267
(FAX) 817-557-8968
Planner

Madan G. Goyal
Passport & Visa Express
901 Waterfall Way #501
Richardson, TX 75080
(ph) 214-231-3000
(FAX) 214-231-3029
Supplier

Sue L. Hageman
South Padre Island CVB
3001 Northrope
Euless, TX 76039
(ph) 214-545-7740
(FAX) NA
Supplier

Trudy Lindgren
AT&T
909 E. Las Colinas Blvd. #1700
Irving, TX 75039
(ph) 214-325-5640
(FAX) 214-325-4719
Planner

Barbara L. Nottingham
Canadian Consulate General
750 N. St. Paul St. #1700
Dallas, TX 75201
(ph) 214-922-9806
(FAX) 214-922-9815
Planner

Kimberly F. Petersen
Melrose Hotel
3015 Oaklawn Ave.
Dallas, TX 75219
(ph) 214-521-5151
(FAX) 214-521-9306
Supplier

Lisa A. Spitz
Harvey Hotel Plano
1600 N. Central Expy.
Plano, TX 75074
(ph) 214-578-8555
(FAX) 214-578-9720
Supplier

Lisa K. Taucher
La Costa Resort & Spa
2100 Costa Del Mar Rd.
Carlsbad, CA 92009
(ph) 619-438-9111
(FAX) 619-438-9007
Supplier

Lynda J. Wailes
Integrity Publishing
13747 Montfort Dr. #106
Dallas, TX 75231
(ph) 214-661-3333
(FAX) 214-661-3319
Planner

Joni R. Witt DOS
Clarion Hotel
1241 W. Mockingbird Lane
Dallas, TX 75247
(ph) 214-630-7000
(FAX) 214-630-6943
Supplier

Melissa G. Zimmerman
The Southland Corp.
2711 N. Haskell Ave.
Dallas, TX 75204
(ph) 214-828-7770
(FAX) 214-828-7754
Planner



M.T. Gnad
'Grapevine' Columnist

Heard it through the Grapevine . . .

By M.T. Gnad
WorldTravel Partners

Cecil E. Burdick III was promoted to director of sales for the *Doubletree* at *Allen Center* in Houston. His former position was sales manager at the *Doubletree* at *Lincoln Centre*.

Michelle Carter, national sales manager, *Dallas Convention and Visitors Bureau*, has been appointed editorial advisor for *Meeting Manager* magazine.

Patty Felps has accepted the position of sales manager for *Festivities Meetings Management Inc.*

Shelia Foley will move to Cambridge, Massachusetts to accept the position of director of sales for the *Hyatt Regency*. She has spent her last six years with the *Harvey Hotels*; her most recent position was director of sales for the *Harvey Hotel Plano*.

Lee Conte-Vaughn, assistant director of sales, *Fort Worth Convention & Visitors Bureau*, is expecting; the baby is due around Thanksgiving.

Steve Kemble, *Steve Kemble Event Design*, was awarded first place in a table top design competition during the *Texas Unity* dinner. Competition, held among local designers from cities across Texas, was to reflect their area of the state. Steve, representing the city of Dallas, created a table top design featuring *Pioneer Plaza*, Dallas' newest tourist attraction.

Melissa Logar has accepted a position in administrative sales at *Star Canyon New Texas Cuisine*. She was formerly with *A Catered Affair*.

Elaine Mathews has accepted the position of director of sales & marketing for *The Houstonian Hotel*. She was formerly with the *Radisson Plaza Hotel Fort Worth*.

Sandy Mukitarian, formerly vice president of sales and operations for the meeting and incentive department for *WorldTravel Partners*, has formed her own company—*Meeting & Incentive Masters*. Her new phone number is 214-343-3653; fax: 214-343-3604.

Valerie Neeley has accepted the position of director of hotel sales, *Audio Visual, Inc.* Her former position was director of operations, *Tarrant County*, for *J & S Audio Visual*.

Allice Riggins of *All-In-One Tour Services*, was featured as an accidental entrepreneur in the May issue of *Today's Dallas Women Success Magazine*. She recently returned from a trip to Montreal where she was invited to speak to Quebec's Southern Region travel industry professionals on how to work with tour operators.

Suzie Oliver, *Society of Diagnostic Medical Sonographers*, was nominated to serve on the board of directors for the *Texas Society of Association Executives*.

Terri White has accepted a catering sales manager position for the *Grand Kempinski*. She was formerly at *Hyatt Regency DFW*. (This information, first reported in last month's column, contained an error—apologies to Terri and her boss at the *Grand Kempinski*, both of whom were gracious and of good cheer about the mistake.)

Keep up with personal news about fellow MPI chapter members—job changes, promotions, awards or special recognitions, weddings, or births—through "Heard it through the Grapevine." Please contact Mary-Therese Gnad (214-702-1000 or FAX 214-702-1023) about items of interest for this column.



The "Inn" Way to Escape the City.

Nestled in the trees along the bank of the Paluxy River, the historic Inn On the River has perfected the art of escaping the city. With its peaceful and quiet country atmosphere, you can unwind and relax during your stay, while fulfilling your meeting's purpose.

- State-of-the-Art Conference Center
- Audio and Video Equipment
- Electronically-Controlled Screen
- Fax Machine, Conference Phone, Copier
- 22 Rooms
- Gourmet Meals
- Tranquil and Creative Haven

INN ON THE RIVER

For meeting information and brochures, contact Kathi Thompson at 214-424-7119
205 S.W. Barnard St. • Glen Rose, Tx. 76043 • 817-897-2101 • Fax 817-897-7729

President's Message continued from page 1

determination led our chapter to new heights.

This past year, the D/FW Chapter experienced significant "firsts." We were the first to institute a "sister chapter" program on an international level. We were also the first chapter to raise \$51,000 in support of designated charities.

In naming a D/FW Chapter president with a Fort Worth address, we continue our tradition of "firsts." I am indeed honored to be the first Fort Worth member to serve in this capacity.

As a team we've achieved great things, but we will not be content to rest on these past successes.

"There is no greater challenge than to surpass yourself," someone once said. So I offer this challenge—let's work together to continue building our chapter—to outdo previous accomplishments.

Surpassing ourselves is a lofty goal, but I believe we can do it. I assure you that your new Board of Directors will do everything possible to provide the tools to make '94-'95 a record-breaking year.

To that end, let's join together and pursue the challenge—the **MPI Challenge**. Together we can make it a great year!



Out of a job?

Looking for a new
challenge?

Seeking a qualified
applicant to fill a position?

Your first stop should be
D/FW MPI's Job Bank!

To list your resume with the Job Bank, send

- a minimum of five (5) resumes (more if you wish)
- a check or money order for \$15 (for MPI D/FW chapter members) or \$25 (for non-members) made payable to MPI D/FW Chapter
- a note regarding the type position(s) that interest you

All inquiries are confidential.

Send these items to:

Jeff Means, CMP • Chair, D/FW MPI Job Bank • 3018 Sierra • Carrollton, TX 75007

D/FW MPI's JOB BANK

Executive Board



**MPI D/FW CHAPTER
PRESIDENT**
Diane Smith, CMP
Alcon Laboratories, Inc.
817-551-8077
FAX 817-568-7128

MPI

MEETING PROFESSIONALS INTERNATIONAL®

1994-95 Dallas/Fort Worth Chapter Officers and Directors



PRESIDENT-ELECT
Phyllis Firebaugh, CMP
A & C Enercom
214-733-4530
FAX 214-733-4561



V.P./ADMINISTRATION
Michelle Carter
Dallas Convention & Visitors Bureau
214-746-6656
FAX 214-746-6688



V.P./EDUCATION
Charlotte Merrill-Davis
Event Source Professionals
817-267-6698
FAX 214-571-7858



V.P./MEMBERSHIP
Sherri Cook, CMP
Sherri Cook & Associates
214-732-9396
FAX 214-732-9398



V.P./PROGRAMS
Cathy M. Mason
USMotivation
817-540-9845 x301
FAX 817-540-9829



V.P./FINANCE
Carolyn Carey, CMP
Allianz Life Insurance Co. of No. America
214-978-7119
FAX 214-978-7770



V.P./PUBLIC RELATIONS
Mary Lynn Novelli
Sterling Hotel Group
214-402-4875
FAX 214-402-4889



IMMEDIATE PAST PRESIDENT
Lesley Meyer, CMP
Sunbelt Motivation & Travel, Inc.
214-401-0210
FAX 214-556-1478

Board of Directors • Planner Members



M.T. Gnad
WorldTravel Partners
214-702-1000
FAX 214-702-1023



Steve Kemble
Steve Kemble Event Design
214-943-5949
FAX 214-943-2811



Jeff Means, CMP
SEI Incentives
214-717-1400
FAX 214-717-1624



Gregory Pynes
Town of Addison
214-450-6202
FAX 214-458-8892

Board of Directors • Supplier Members



Jim Follett, CHSE
InterContinental and Forum Hotels
214-715-1777
FAX 214-715-1705



Jan Pollard
Omni Hotels National Sales Office
214-444-0044
FAX 214-444-8822



Linda Sergeant
Bill Reed Decorations, Inc.
214-823-3154
FAX 214-823-3191



Dorrit Turner
Yellow Rose Touring & Special Events
214-746-3780
FAX 214-746-3786

MPI

MEETING PROFESSIONALS INTERNATIONAL®

Meeting Professionals International is the world's largest association of meetings professionals with more than 12,000 members in 42 countries and 49 chapters and clubs. MPI's mission is to provide educational opportunities and recognition for those in the meetings industry. The association is committed to excellence in meetings, continuous international growth, research, a strong chapter network and high ethical standards.

MPI Internat'l Headquarters
INFOMART
1950 Stemmons
Suite 5018
Dallas, Texas 75207-3109
214-712-7700

MPI
Dallas/Fort Worth Chapter
10875 Plano Road
Suite 115
Dallas, Texas 75238
214-343-0555

Officers

President
Diane Smith, CMP
Alcon Laboratories, Inc.
817-551-8077

President-Elect
Phyllis Firebaugh, CMP
A & C Enercom
214-733-4530

Vice President/Administration
Michelle Carter
Dallas Convention & Visitors Bureau
214-746-6656

Vice President/Education
Charlotte Merrill-Davis
Event Source Professionals
817-267-6698

Vice President/Membership
Sherri Cook, CMP
Sherri Cook & Associates
214-732-9396

Vice President/Programs
Cathy M. Mason
USMotivation
817-540-9845 x301

Vice President/Finance
Carolyn Carey, CMP
Allianz Life Insurance Co. of No. America
214-978-7119

Vice President/Public Relations
Mary Lynn Novelli
Sterling Hotel Group
214-402-4875

Immediate Past President
Lesley Meyer, CMP
Sunbelt Motivation & Travel, Inc.
214-401-0210

Board of Directors

Planners
M.T. Gnadt
WorldTravel Partners
214-702-1000

Steve Kemble
Steve Kemble Event Design
214-943-5949

Jeff Means, CMP
SEI Incentives
214-717-1400

Gregory Pynes
Town of Addison
214-450-6202

Suppliers
Jim Follett, CHSE
InterContinental and Forum Hotels
214-715-1777

Jan Pollard
Omni Hotels National Sales Office
214-444-0044

Linda Sergeant
Bill Reed Decorations, Inc.
214-823-3154

Dorrit Turner
Yellow Rose Touring & Special Events
214-746-3780

CURRENT Staff

Editor
Gracie Hatfield Hilton
The Write Stuff
Ph. & FAX 817-467-7439

Advertising Director
Stephanie Davis
Sheraton Park Central Hotel
214-851-2016

MPI

MEETING PROFESSIONALS INTERNATIONAL®

Dallas/Fort Worth Chapter
10875 Plano Road • Suite 115
Dallas, Texas 75238



**DALLAS/FORT WORTH
CHAPTER**