

MPI

MEETING PLANNERS INTERNATIONAL*

CURRENT

Meeting Planners International

May 1994

Dallas-Fort Worth Chapter

President's Message

Team MPI Grows Through Grassroots Involvement

By Lesley Meyer, CMP
Sunbelt Motivation & Travel, Inc.

As the present MPI board approaches the end of our term of office, consider the path we have taken down the road to leadership.



Lesley Meyer, CMP

Each of the present board of directors has contributed to MPI in many ways—many for a number of years.

Working together on numerous projects and committees over the years, this group has become an outstanding TEAM of leaders for our chapter.

In July a new TEAM of officers and directors will take the reins of leadership.

Our chapter is blessed with so many individuals—many new to our organization—who can lead us to new heights of achievement.

If you are looking for an

opportunity to become more involved in your chapter life, please take a few moments to complete the interest form enclosed in this newsletter.

Your involvement is essential, and you will benefit from a network of MPI friendships as you work with teammates on various committees and

projects.

Get involved today with TEAM MPI—because Together Everyone Achieves More.

This issue of CURRENT is sponsored by

**City
of
Arlington,
Texas**

MPI

MEETING PLANNERS INTERNATIONAL*

May D/FW Chapter Meeting

'94 OlyMPIad

featuring

Awards & Honors

May 26, Thursday

The Adolphus

*1321 Commerce
Dallas, Texas 75202
214-742-8200*

*Orientation 5:30 p.m.
Reception & Registration 6:00 p.m.
Dinner & Dancing 7:00 p.m.*

*R.S.V.P.
by noon, Tuesday, May 24
Sandi or Jennifer
214-343-0555*

*Advance Registration \$26
Late Registration \$35
Guest Registration \$30*

See page 3 for more details and meeting reservation policy.

INSIDE

President's Column

1

Vail Associates

11

May Meeting Info

3

The Kids Charity Ball

12

News Briefs

4

Opportunities for Involvement

14

Last Month's Meeting

8

City of Arlington, TX

15

CURRENT

Meeting Planners International
Dallas/Fort Worth Chapter

Newsletter Staff

Editor
Gracie Hatfield Hilton
The Write Stuff
Phone & FAX
metro 817-467-7439

Vice President/Public Relations

Steve Kemble
Steve Kemble Event Design
Phone: 214-943-5949
FAX: 214-943-2811

Advertising Chair

Stephanie Davis
Sheraton Park Central Hotel
Phone: 214-851-2016
FAX: 214-991-4557

Photographer

Mark Lazarow
Mark Lazarow Photography
214-380-0985
FAX: 214-380-1431

The *CURRENT* is published 12 times yearly for the D/FW Chapter of Meeting Planners International, the industry's leading educational and networking resource in meetings management. Statements of fact and opinion are the responsibility of individual writers and do not imply collective opinion of the officers or members of MPI.

CURRENT Deadlines

Upcoming deadlines for copy and ads for the D/FW MPI chapter newsletter, the *CURRENT*, are as follows:

ISSUE	DEADLINE
June '94	May 13, Friday
July '94	June 17, Friday
August '94	July 15, Friday

Please mail or FAX copy to Gracie H. Hilton, *CURRENT* Editor, 3020 Glasgow Court, Arlington, TX 76015, phone & FAX: (metro) 817-467-7439.

Whenever possible, please send information on 3.5 disk, preferably in WordPerfect or Microsoft Word format.

Copy is cheerfully accepted early. Because of production schedules, information received after 5 p.m. on the deadline day will not be included in the newsletter in progress. Late-arriving copy will be included in the next month's issue, if information is still timely.

Upcoming MPI Events

May 13-14
CMP University
Plaza of the Americas
Dallas

May 17, Tuesday
'Brown Bag' Luncheon
Stouffer Hotel, Dallas
11:30 a.m.

May 26, Thursday
Chapter Meeting/Awards Dinner
Adolphus Hotel
6:00 p.m./Dinner

June 11-12
Saturday-Sunday
Chapter Management Forum
Minneapolis, MN

June 12-14
Sunday-Tuesday
1994 Annual Convention
Minneapolis, MN

June 23, Thursday
Executive Workshop
Cooper Aerobics Center
1:30 p.m.

June 23, Thursday
Chapter Meeting
Cooper Aerobics Center
6:00 p.m./Dinner

July 28, Thursday
Chapter Meeting
DFW Hilton
11:30 a.m./Lunch

NOTE: Chapter meeting plans are subject to change. Check the CURRENT each month to confirm details.

C H A R I T Y

By Mary Lynn Novelli
Sterling Hotel Group

Volunteers Needed for June 4 Weekend Project

The D/FW chapter's 1994 Annual Weekend Project is scheduled Saturday, June 4. Headed by Chairman Don DeFeo, the project will benefit Trinity Ministry to the Poor.

Crews will work on the organization's transition apartments. Volunteers are needed to help in the garden and yard, as well as inside—painting and moving furniture.

Two crews are needed — one crew to work from 9:00 a.m.-12:30 p.m., and another to work from 12:00-3:30 p.m. Sack lunches will be provided to all volunteers between 12:00 -12:30 p.m.

Please contact Don DeFeo at 214-991-9048 (FAX) or 214-386-9403 (phone) for more information, or to volunteer your services for our First Annual Weekend Charity Project!

O
R
N
E
R

May Meeting Highlights

'94 OlyMPIad to Honor Past and Current Leaders, Outstanding Achievers

By Phyllis Tackitt
The Tower Club

Join the D/FW chapter's end-of-the-year celebration, the '94 OlyMPIad May 26 at the historic Adolphus Hotel in downtown Dallas. The highlight of the evening will be the recognition of the chapter's '93-94 champions and installation of the officers and directors for the upcoming administrative year.

The '94 OlyMPIad will feature recognition and a celebration of achievements of the current officers and directors.

Past President Ellen Beckert (The Freeman Company), a former MPI International Supplier of the Year, will install the 1994-95 officers and board of directors.

Another highlight of the '94 OlyMPIad will be the awards ceremony, recognizing chapter members with exceptional service records. Phyllis Firebaugh (A&C Enercon) and Gary Clark (AVW Audio Visual, Inc.) will preside over this important recognition ceremony.

Three persons are nominated for each of the outstanding local awards—D/FW Chapter Planner of the Year and D/FW Chapter Supplier of the Year.

Nominated for *Planner of the Year* are **Sherri Cook, CMP** (Sherri Cook & Associates), **Suzann Oliver** (Society of Diagnostic Medical Sonographers), and **Alex Vurpillat** (Carey Transportation).

Nominated for *Supplier of the Year* are **Sue Ferguson-Fry** (Cityplace Conference Center), **Mary Jo Malone** (Plaza of the Americas), and **Pat McCain, CMP** (Krisam Group).

Awards to Planner and Supplier of the Year are based on significant contributions in committee and board involvement, meeting industry service, recognition and awards, meeting industry-related speaking engagements, and community service.

Three chapter members nominated for awards at the international level will be honored. The winners, named by the International Awards Committee, will be announced at the Annual Convention in June.

Norb Dettmann, PhD, CMP (Tarrant County Junior College) is our nominee for *International Planner of the Year*. **Alan Powdermaker** (Circle R Ranch) is our

nominee for *International Supplier of the Year*. **O.D. O'Donnell** (Nightlife Talent & Management Agency) is our nominee for *Chapter Manager of the Year*.

Others who will be recognized at the May meeting include winners of the Suzie Fiveash Award for Membership Recruitment, Host Facility of the Year, and Program of the Year. Finalists for these awards will be determined after the April chapter meeting.

The celebration begins at 6:00 p.m. when chapter presidents will be honored at a cocktail reception in the Century Ballroom prefunction area.

Orientation for new chapter members will begin at 5:30 p.m.

Co-chairs for the May meeting are Gail Lemaire (Adolphus Hotel), O.D. O'Donnell (Nightlife Talent & Management Agency), Mary Lynn Novelli (Sterling Hotel Group),

Gale Sliger (Gale Sliger Productions, Inc.), Joe Bledsoe (The Worthington Hotel), and Phyllis Tackitt (The Tower Club).

Hosts from the Adolphus are Garvin O'Neil, Hans Mulders and Gail Lemaire.

Meeting Reservation & Attendance Policy

Registration fees will be collected at the door; advance payments are not accepted. If paying by check, please have check completed before approaching registration table. Reservations must be made by RSVP deadline for advance registration fee to apply. Late reservations and walk-ins will be accepted on a SPACE AVAILABLE basis. Cancellations must be made by the RSVP deadline. **No-shows will be billed.** Members are responsible for "no-show" charges for their guests. Guests are limited to attending three meetings per year (spouses are an exception).

May Host Facility

The Adolphus

The legendary Adolphus Hotel was built in 1912 by beer baron Adolphus Busch. This luxury hotel, situated in the business and financial Center of Dallas, predates most of America's "grand luxe" hotels, which were constructed in the 1920s.

In 1980 the Adolphus was closed for 18 months, completely gutted and rebuilt at a cost of \$80 million. What was an 800-room hotel now has 300 spacious guest rooms, 100 executive suites and 20 specialty suites which include large living rooms, beautiful patio terraces and wet bars.

The recipient of every hospitality industry award—including Five Diamonds (11 years), Pinnacle, Gold Platter, and Top Ten in America—the Adolphus is known for its fine dining.

The French Room, a Five-Diamond gourmet restaurant was recently named "Top Restaurant" in Dallas as well as in the state of Texas by Conde Nast's *Traveler Magazine*. The Bistro, with country French decor, serves breakfast and luncheon. The casual Walt Garrison Rodeo Bar & Grill offers "Tex-Mex" favorites. Guest room dining is available 24 hours a day.

The Adolphus has a total of 23,000 square feet of space in 22 rooms. Meeting space on the Ballroom Level spans the elegant Grand Ballroom and the new Century Ballroom. The Mezzanine boasts 15 function rooms.

The Adolphus Hotel is situated at 1321 Commerce Street, near major Dallas attractions, including West End Historic District, Reunion Arena, Dallas Museum of Art and the Meyerson Symphony Center.

Southbound travelers on the Dallas Tollway: • exit on Harry Hines, • follow Field • veer right to Griffin, • turn left on Commerce, • the hotel is on the left, in 1 1/2 blocks.

Travelers on Stemmons: • exit Commerce East, the hotel is 8-10 blocks away, on the left.

Travelers on Central Expressway: • exit I-35E/Waco (Woodall Rogers) • exit at Field, turning left, • veer right to Griffin, • turn left on Commerce, • the hotel is 1 1/2 blocks away, on the left.

Valet parking for the D/FW MPI event is complimentary.



News Briefs

Chapter News

D/FW Chapter Membership is 594

Membership in the D/FW chapter of MPI stands at 594, according to the chapter membership report as of March 31. That figure indicates a retention rate of 73.67%.

The highest retention rate—among U.S. chapters—reported by a single chapter was MPI of Wisconsin, with a retention rate of 78.1%. The second highest retention rate, 78.12%, was reported by MPI of Pittsburgh.

Membership in the D/FW chapter includes 280 planners (47.6%), 308 suppliers (47.6%) and six students.

Panel to Discuss Contract Negotiations at May 17 'Brown Bag' Luncheon

Here's the refresher course you've been waiting for! "Polish up Your Contract Negotiations" at the May 17 'Brown Bag' luncheon at the Stouffer Hotel-Dallas.

Panelists John Dodson, resident manager of the Adolphus Hotel; Sally Gibbons, director of marketing at Loews Anatole Hotel; and Jan Pollard, national director of sales at Omni Hotels, will discuss the important components of hotel contracts.

The 'Brown Bag' Luncheon Series provides cost-defrayed, quality educational programs to D/FW chapter members. It's informal and informative—and FREE! Bring your lunch; soft drinks will be supplied.

To register for the 11:30 a.m.-1:00 p.m. event, contact Ellen Larson (Loews Anatole Hotel), chair of the 'Brown Bag' educational series, 214-761-7252 or FAX 214-761-7242.

The Stouffer Hotel-Dallas is situated at 2222 Stemmons Freeway, Dallas, TX 75207.

Chapter Volunteers Contribute to Success of Senior Citizens Party

Volunteers from the D/FW chapter of MPI answered the call and contributed to the success of the annual "Love for Kids" Senior Citizens Party, said Mary Cowart (Mary Cowart Meeting Consultants), who rounded up volunteers to staff the April 6 event.

Approximately 1200 senior citizens from around the metroplex enjoyed top-notch enter-

tainment, dancing, an Easter bonnet contest, refreshments, prizes and other giveaways at Trinity Hall, adjacent to Loews Anatole Hotel.

The hall became an "Easter Wonderland" with balloon arches and colorfully decorated table.

Love for Kids is a philanthropic organization benefiting underprivileged children and the elderly.

Many thanks to chapter President Lesley Meyer, CMP (Sunbelt Motivation & Travel, Inc.), Sherri Cook (Sherri Cook & Associates) and Sandra Moten (Mobil Research & Development) for their assistance.

D/FW Chapter to Host Second Annual Educational Retreat August 5-7

Mark your calendar now and plan to attend "Lone Star Link-Up," the Second Annual Educational Retreat August 5-7.

The retreat, hosted by the D/FW chapter of Meeting Planners International, will be held at the Arlington Marriott.

Outstanding educational sessions will be

offered during this three-day retreat. Suggested topics include business ethics, industry trends, and effective communications.

Participants will enjoy the opportunity to visit MPI International Headquarters in Dallas and will tour MPI's Educational Resource Center.

Enjoy networking with other Texas MPI members during several social functions, including events at Dallas' West End Marketplace, a trip on Fort Worth's Tarantula Steam Engine Train to the historic Fort Worth Stockyards, and a picnic in the park at Six Flags over Texas.

Registration materials will be available soon.

International News

Incoming Chapter Presidents' Met in Dallas for Orientation

Incoming MPI chapter presidents met in Dallas May 9-11 for the sixth annual Chapter Presidents' Orientation Program.

The three-day session provided 1994-95 chapter presidents the opportunity to visit International Headquarters, meet one-on-one with key staff, fine-tune leadership skills and network with counterparts in other chapters.

The Hyatt Regency Dallas at Reunion, sponsor of the program since inception, again hosted guests at its downtown location. For the third year, Delta Air Lines provided complimentary air travel for attendees.

Chapter Manager Workshops Set for Late July in Dallas

Chapter managers will meet in Dallas July 29-31 for Chapter Manager Workshop sessions at The Doubletree Hotel Park West.

The workshops are designed for education/program chairs, treasurers, membership chairs and newsletter editors.

The association will fund three representatives from each chapter. Others may attend at the expense of the chapter or individual.

More specific information and registration packets will be presented to chapter presidents this month for distribution to appropriate chairs.

Chapter Leaders Can Access Help Through Special MPINet Feature

Meeting Planners International announces a special MPINet feature for chapter leaders.

Through "Chapter Leader Networking," more than 800 chapter leaders will be able to communicate and share information with one another 24 hours a day, seven days a week.

MPINet is the first global on-line communication system designed specifically for the meetings industry.

MPINet expands communication options through information sharing, networking and educational opportunities, using electronic forums to bring people together efficiently and economically. For more information call 214-712-7744.

DOLLAR\$ & CENT\$ D/FW Chapter/MPI

For the month ending March 31, 1994

Beginning of the Month \$57,356.95

Income 54,512.00

Disbursements (25,374.94)

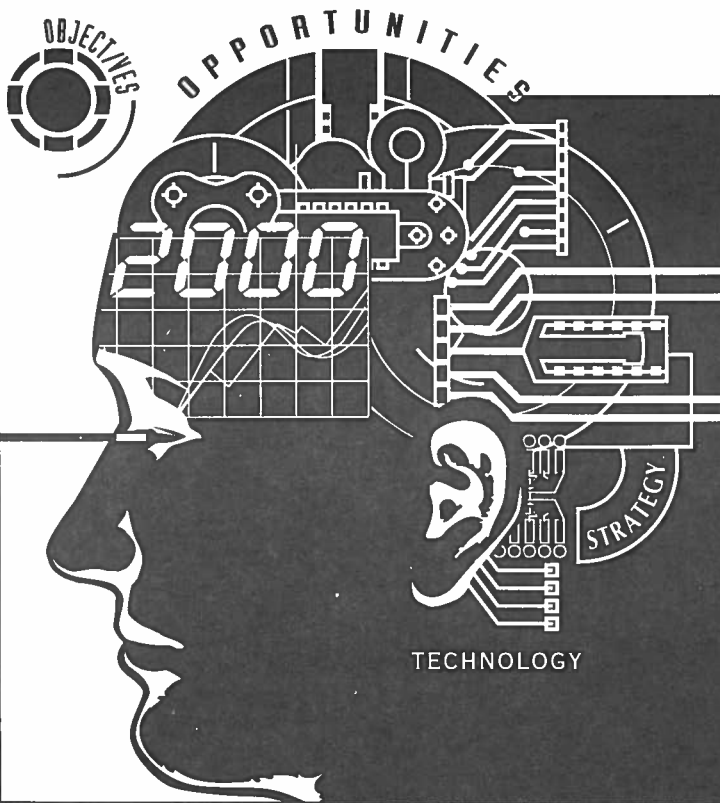
EOM Balance \$86,494.01*

*Includes \$10,000.00 PEC
Professional Education Conference

*Includes \$1,401.00 PGA
Professional Growth Award

*Includes \$38,859.51 ACE
Annual Charity Event

Report submitted by Carolyn Carey, CMP (Allianz Life Insurance Co.), vice president/finance.



REENGINEERING
The New Meeting Professional

MPI

MEETING PLANNERS INTERNATIONAL®

1994 ANNUAL CONVENTION
JUNE 12-14
MINNEAPOLIS, MINNESOTA

Reengineer your career through
exceptional MPI educational experiences

For registration materials call 1-214-712-7751 or fax 1-214-712-7795



Out of a job? Looking for a new challenge? Seeking a qualified applicant to fill a position? Your first stop should be D/FW MPI's Job Bank!

To list your resume with the Job Bank, send

- a minimum of five (5) resumes (more if you wish)
- a check or money order for \$15 (for MPI D/FW chapter members) or \$25 (for non-members) made payable to MPI D/FW Chapter
- a note regarding the type position(s) that interest you

Send these items to:

Jeff Means, CMP
Chair, D/FW MPI Job Bank
3018 Sierra
Carrollton, TX 75007

All inquiries are confidential.

TEAM MPI
Together
Everyone
Achieves
More . . .

MPI

D/FW MPI's
**JOB
BANK**

Chapter Membership Contest Deadline is May 31

Now is the time to get new membership applications in! Deadline for the chapter membership contest is May 31.

O.D. O'Donnell (Nightlife Talent and Management Agency), vice-president/membership, reports he has several applications for suppliers that require planner matches.

Chapter membership has been close to 600 for several months. Official membership was 594 on March 31.

"Let's all pull together and push over the 600 mark, O'Donnell said. "Don't delay—even for a day—following up on potential new members."

If you need membership packets contact O'Donnell at 214-691-4417. He will send them directly to you, or to someone in your name, if you prefer.

Please forward all completed applications to O'Donnell, P.O. Box 12209, Dallas, TX 75225.

Heard it through the Grapevine...

By M.T. Gnad
National Business Association

Holly Adams, formerly a meeting planner with Southland Corporation, has accepted a meeting planner position with *WorldTravel Partners*.

Congratulations to **Stephanie Davis**, **"B" Nottingham**, and **Marcia Warnke**, *ITT Sheraton Park Central Hotel*. The trio achieved more than 120% of their sales goals for 1993—and earned a five-day trip to Rome, Italy.

Eric Foster, president of *EFI Communications*, was recently honored for his company's contributions to the completion of The Ball Park in Arlington.

Don DeFeo, director of sales, *Festivities Meeting Management Associates*, was featured in the February issue of *Meeting News* for his work on increasing awareness of drug and alcohol abuse in the meetings and hospitality industry. For copies of the article, call Don at 214-389-9403.

Joe Gibbons left the Dallas/Fort Worth metroplex April 25 for Vali, Indonesia, where he will work as general manager for *Waterborn Waterpark*. He was formerly with *Medieval Times*.

Cindy Hughes, corporate sales manger, *American Express*, is enjoying working out of her home. Her new phone number is 214-418-8002; FAX: 214-417-8746.

Karen Jordan has accepted the position of president of the *Austin Convention & Visitors Bureau*. She was formerly with Loews Anatole Hotel.

Katie Johnston has accepted the position of senior sales manager at Doubletree Park West; She was formerly with the Marriott Quorum.

Karen McCollough is the new sales manager for *Medieval Times*; she was previously with the Arlington Hilton.

Keep up with personal news about fellow MPI chapter members—job changes, promotions, awards or special recognitions, weddings, or births—through "Heard it through the Grapevine." Please contact Mary-Therese Gnad (214-991-5381 or FAX 214-960-9149) about items of interest for this column.

BLESS ALL THOSE WHO WORKED SO HARD ON THE CHAPTER MEMBERSHIP DRIVE. LET US NOT FORGET THAT INTERNATIONAL'S MEMBERSHIP DRIVE ENDS MAY 31!



Remember Father Vito's Words!

June Meeting Focus: T E A M— Teambuilding Excites All Members!

- Do you eat healthy meals daily?
- Do you plan nutritious meals for your events?
- Are you physically fit?
- Do you plan fitness opportunities in your meeting itineraries?
- Do you know the value of teambuilding activities?

If you answered “no” to any of these questions, you won’t want to miss the June 23 D/FW MPI chapter meeting at The Cooper Aerobics Center.



Dr. Kenneth Cooper, known internationally as the “Father of Aerobics,” will discuss “Food, Fitness & Fun.”

More than any other person, Cooper, founder of the Cooper Aerobics Center, has motivated more people to exercise in pursuit of good health. His influence is worldwide.

His 11 books have sold more than 20 million copies in 41 languages and Braille. A twelfth book will be published this summer.

Dress is casual for this dinner meeting. Teambuilding activities will follow Dr. Cooper’s presentation.



The “Inn” Way To Meet with Success.

Nestled in the trees along the bank of the Paluxy River, the historic Inn On the River has perfected the art of meeting with success. With an atmosphere that promotes productivity, you will find that the success of your meetings will lead to immeasurable results.

- State-of-the-Art Conference Center
- Audio and Video Equipment
- Electronically-Controlled Screen
- Fax Machine, Conference Phone, Copier
- 22 Rooms
- Gourmet Meals
- Tranquil and Creative Haven

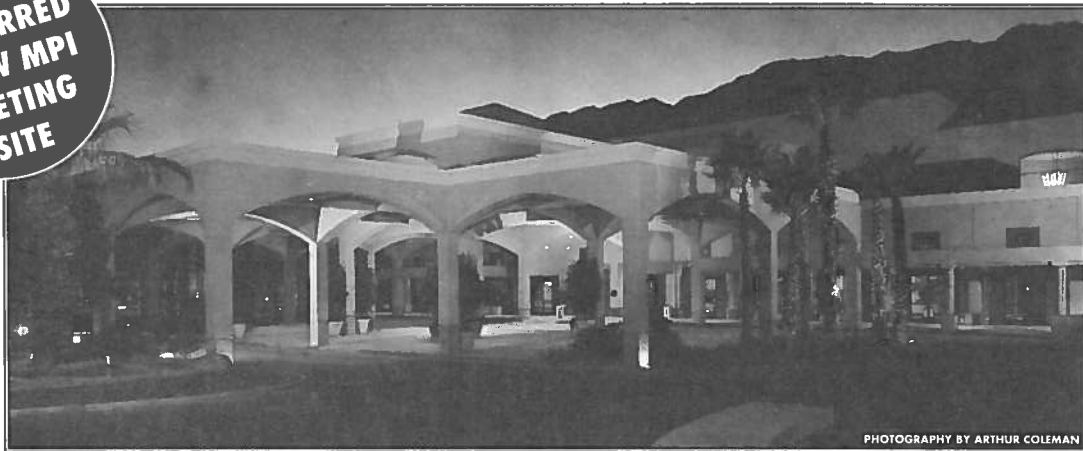
INN ON THE RIVER

For meeting information and brochures, contact Kathi Thompson at 214-424-7119
205 S.W. Barnard St. • Glen Rose, Tx. 76043 • 817-897-2101 • Fax 817-897-7729

Palm Springs Convention Center

PALM SPRINGS, CALIFORNIA

THE
PREFERRED
D/FW MPI
MEETING
SITE



PHOTOGRAPHY BY ARTHUR COLEMAN

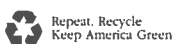
- 66,000 Sq. Ft. of carpeted exhibit hall
- Over 15,000 Sq. Ft. of meeting rooms, including a 414 seat, tiered theater
- 410 room Wyndham Hotel attached to the convention center all under the same roof



Palm Springs
Convention Center

- Over 1,800 hotel rooms, world class shopping & dining within a 5 min. walk
- 1.5 miles from the Palm Springs Airport

Call **800/333-7535** today and we’ll send you a free video site tour and gift.



277 N. Avenida Caballeros • Palm Springs, CA 92262 • 800/333-7535 • 619/325-6611 or FAX 619 322-6921



April Meeting Highlights

April Showers Bring May Flowers —and for MPI, a Change of Venue!

Photos by Mark Lazarow Photography



ABOVE: Organizers for the April chapter meeting planned an outdoor location to match the program theme about spectacular outdoor events. But, alas, and alack, the heavens opened—and poured and poured and poured. Planners and strategists quickly switched to Plan B and moved the event from Dallas' Old City Park to an "inside location with an outside feel." Here, in the spacious windowed room of the Dallas Civic Garden Center, chapter members were entertained by the Dallas Banjo Band, enjoyed a tasty luncheon provided by Baker's Ribs, and heard a thought-provoking program by special events impresario Joe Jeff Goldblatt. Supplanners for the April meeting gathered were, left to right, **George Primo** (George Primo Orchestras), **Steve Kemble** (Steve Kemble Event Design), **Linda Sergeant** (Bill Reed Decorations, Inc.), **Mike Snyder** (Baker's Ribs), and **Peg Wolschon** (Kerrville Bus Company). Not pictured is Sally Goldesberry, CMP (American Society of Petroleum Engineers).



Enjoying the pre-meeting reception at the Dallas Civic Garden Center were **Ken Rowe** and **Pat Tolliver**, both of Class Act Master Event Planners.



Joe Jeff Goldblatt, CSEP

Guest speaker for the April meeting was Dallas-area native **Joe Jeff Goldblatt, CSEP**, who learned as a child to "make every event a celebration."

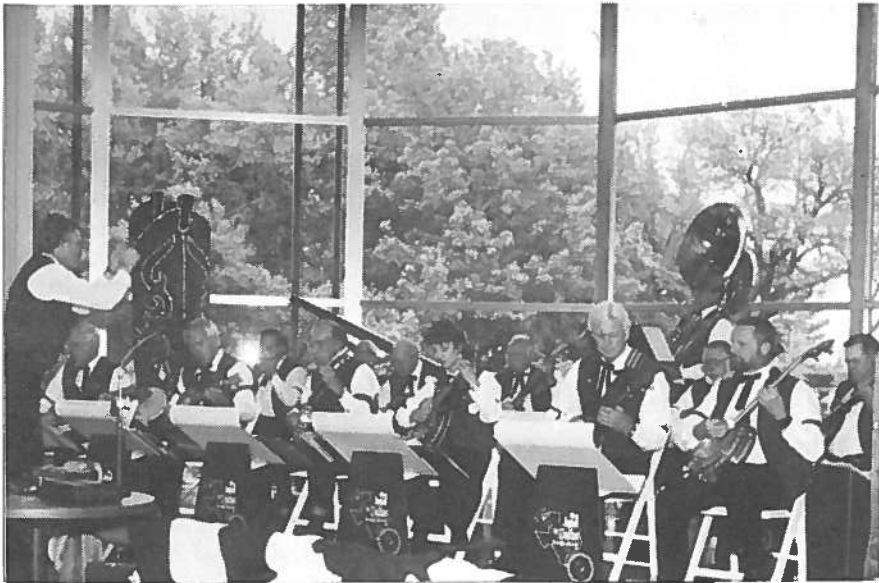
Goldblatt is author of the text, *Special Events: The Art and Science of Celebration*. The book, now in its fifth printing, is used by professionals and students throughout the world.

Goldblatt designed White House events for former President Ronald Reagan, inaugural events for former President George Bush and holds the distinction of producing the opening of Donald Trump's Taj Mahal resort—and being paid in full in advance for those services.

The founding president of the International Special Events Society, Goldblatt recently earned the Certified Special Events Professional designation, one of only 24 events professionals in the world to hold this certification.

While serving as coordinator of the new Forum for Sport and Event Management at The George Washington University in Washington, D.C., Goldblatt is earning his masters and doctorate degrees. His goal is to establish the first major in the field of event management.

**Meeting Details
Reported by
Traci Bower
(Reunion Ranch)**



MANY THANKS!

Many thanks to those whose time, talents, and expertise contributed to the enjoyment of the May meeting. They include • **Jerry Jeff Goldblatt** • **Ducky Bob's** • **Abbey Rents** • **Bill Reed Decorations** • **Dallas Banjo Band** • **Smoky Montgomery & the Dallas Banjo Band** • **Miss Trixie & the Longriders** • **Bauer-Sotham Audio Video** • **Dallas Brewing Company** • **Steve Kemble Event Design** • **Mike Snider of Baker's Ribs** and the patient, cooperative staffs at both • **Old City Park** and the • **Dallas Garden Center** .

LEFT: The **Dallas Banjo Band** provided spirited music during the reception at Dallas Garden Center.

BELOW: Rainy, drizzly weather didn't dampen the spirits or enthusiasm of **Miss Trixie and the Longriders** who greeted each and every MPI member and guest with a rousing welcome.



ABOVE: **Sue Ferguson-Fry** (University Club), v.p./programs, extends a hearty MPI thank you for lots of last-minute work to **Ed Vercher** of Dallas Garden Center.



LEFT: Chapter member **Jim Follett**, CHSE (InterContinental and Forum Hotels) enjoys a sample of Texas-brewed beer from Texas Brewing Company. The libations were served at the pre-meeting reception by **Jim Varano** of Dallas-based Texas Brewing Company and **Michael D. Mitara** of Gulf Importers & Distributors, Inc.



LEFT: **Candis Clark** of Dallas' Old City Park was given much praise for her time and efforts toward "the meeting that couldn't be" because of impending thunderstorms. Old City Park will be the chapter venue ASAP, Clark was promised.

'New Kids on the Block'/Directory Update D/FW Chapter Welcomes 12 New MPI Members!

Peggy B. Stephenson
The Brice Group
P.O. Box 809112
Dallas, TX 75380
214-788-5294
Planner

Karen G. Young
Wyndham Incentive Marketing
1909 Hi Line, Suite H
Dallas, TX 75207
214-573-4260
Planner

Kristi K. Hollomon
J & S Audio Visual
4308 Beltwood Pkwy S.
Dallas, TX 75287
214-239-9133
Supplier

Brenda K. Jackson
Southwest Organ Bank
3500 Maple #800
Dallas, TX 75219
214-821-1931
Planner

Nikki S. Jorski
Dallas Market Center.
2100 Stemmons Fwy., 5th Floor
Dallas, TX 75207
214-655-7655
Planner

Steven K. Mack
CLR Fast-Tax
2395 Midway Rd. N5320
Carrollton, TX 75006
214-250-7044
Planner

Virginia L. Paxton
Ginny's Gifts
2120 Colborne Drive
Plano, TX 75025
214-788-6188
Supplier

Pamela L. Schmidt
McCaw-Lin Cellular
14900 Landmark #400
Dallas, TX 75240
214-407-7162
Planner

Piper R. Senzig
Hard Rock Cafe
2602 McKinney #320
Dallas, TX 75204
214-969-5572
Supplier

Bill G. Antonisso
Carol Marks Music
615 Business Parkway
Richardson, TX 75081
214-231-4091
Supplier

Jeffery G. Cavis
Marketing Mgt. Assoc. Inc.
Festivities
4100 McEwen #101
Dallas, TX 75244
214-386-9403
Supplier

Kristene A. Delich
Maritz Travel
11353 Emerald St.
Dallas, TX 75229
214-277-2490
Planner

Build a Better Chapter! Attend the Chapter Management Forum

Wear jeans, t-shirts and construction boots, if you like, to the Chapter Management Forum reception Saturday, June 11, in Minneapolis. A fun evening is planned by the Radisson Plaza Hotel in Minneapolis, host for the CMF, as the stage is set to provide the tools for building a better chapter.

The CMF sessions, held in conjunction with the Annual Convention June 12-14, begin early Sunday morning, June 12, at the Minneapolis Convention Center.

Take home ideas from the roundtable of your choice: member retention, monthly programs, ideas to increase attendance, fundraising/special events, securing sponsorships/events, recruiting/mentoring leaders, newsletter, volunteer recognition/awards, recruiting/mentoring new members, reengineering your chapter, strategic planning at the chapter level, external public relations, or developing a CMP study group.



MPI Building Better Chapters

A blueprint
for success

MPI
MEETING PLANNERS INTERNATIONAL®
1950 Stemmons Freeway • Suite 5018
Dallas, Texas 75207-3109 USA

WANTED:

- Experienced chapter volunteers
- Newcomers willing to participate (will train)

OPPORTUNITY:

- Network with MPI peers
- Expand your volunteer experience
- Learn how to be a more active participant in your local chapter
- Enhance your leadership skills
- Increase your professionalism

INTERVIEWING AT:

MPI Chapter Management Forum
RECEPTION
Saturday, June 11, 7-9 p.m.,
Radisson Plaza Hotel Minneapolis
FORUM
Sunday, June 12, 8 a.m. - 1 p.m.,
Minneapolis Convention Center

APPLY:

Check the appropriate box on your
MPI Annual Convention
registration form or telephone MPI
Chapter Relations at 1-214-712-
7741 or fax 1-214-712-7770.

1994-95 Officers & Directors Elected by Acclamation

Officers and directors to lead the Dallas/Fort Worth chapter of Meeting Planners International in 1994-95 were elected by acclamation at the April chapter meeting.

Officers elected were President Diane Smith, CMP (Alcon Labs/planner); President-Elect Phyllis Firebaugh, CMP (A & C Enercom/planner); Vice President/Administration, Michelle Carter (Dallas CVB/supplier); V.P./Membership Sherri Cook, CMP (Sherri

Cook & Associates/planner) V.P./Education Charlotte Merrill-Davis (Event Source Professionals/supplier); V.P./Programs Cathy Mason (USMotivation/planner); V.P./Finance Carolyn Carey, CMP (Allianz Life Insurance Co./planner); and V.P./Public Relations Mary Lynn Novelli (Sterling Hotel Group/supplier).

Elected directors in the planner category were M.T. Gnad (National Business Association); Jeff Means (S E I

Incentives); Greg Pynes (Town of Addison); and Steve Kemble (Steve Kemble Event Design).

Elected directors in the supplier category were Linda Sergeant (Bill Reed Decorations, Inc.); Jim Follett, CHSE (Intercontinental & Forum Hotels); Jan Pollard (Omni Hotels National Sales Office); and Dorrit Turner (Yellow Rose Touring & Special Events).

These officers will be installed at the May meeting and assume leadership in July.

This summer taxi to the Vail Valley.



© and the words "Beaver Creek" are registered trademarks of Vail Investments, Inc. American Airlines name and logo are trademarks of American Airlines, Inc. All rights reserved.

New direct flights to Vail/Eagle County Airport (EGE)

Beginning June 16, American Airlines will offer daily non-stop flights from Dallas/Fort Worth to Vail/Eagle County Airport.

So you land just minutes from Vail, Avon and Beaver Creek® Resort.

This 757 jet service offers convenient connections from nearly ninety cities throughout North America and Europe.

Service will be available from June 16-August 7.

For more information or to plan a meeting at Vail or Beaver Creek Resort,
call Vail Associates, Inc. at 1-303-845-5704.



D/FW MPI Chapter Raises \$51,000 for Children at 'The Kids Charity Ball'



Honorary Chairman **Roger Staubach** and auctioneer **Bob Eckelcamp** start the auction at The Kids Charity Ball. Guests had the opportunity to bid on a number of valuable auction items, including many travel opportunities.



Co-chairs for The Kids Charity Ball, **Dana Nickerson, CMP**, left (Square One Productions) and **Greg Pynes** (Town of Addison) chat with **Phyllis Firebaugh, CMP**, (A&C Enercom) at The Kids Charity Ball. Firebaugh is the D/FW MPI president-elect for 1994-95

RIGHT: D/FW chapter board member **Mary Lynn Novelli** (Sterling Hotel Group), served as chair of The Kids Charity Ball.



Representing EFI Communications, Gold Sponsor for The Kids Charity Ball was **J.B. Edwards**, left, and **Bob Berry**, right. Standing between Edwards and Berry are **Lesley Meyer, CMP** (Sunbelt Motivation & Travel, Inc.), president of the D/FW chapter of MPI, and **Randy Taylor** (Design and Productions).



Chapter members **Mary Lynn Novelli** (Sterling Hotel Group) and **Steve Kemble** (Steve Kemble Event Design) visit with **Marianne and Roger Staubach** at The Kids Charity Ball. Novelli was chairman of the event at the Fairmont Hotel-Dallas; Staubach served as honorary chair.



LEFT: Chapter member **Stephanie Staubach** (Personalities International), co-chair of the entertainment committee, may have had just a *little* influence in persuading her father to serve as honorary chair of The Kids Charity Ball!

BELOW: **Diane Smith, CMP** (Alcon Labs), president-elect of the D/FW chapter of MPI, **Bill Boyd, CMP** (Sunbelt Motivation & Travel, Inc.), president-elect of MPI International, **Lesley Meyer, CMP** (Sunbelt Motivation & Travel, Inc.), president of the D/FW chapter of MPI, and **Mary Jo Malone** (Plaza of the Americas Hotel) pause between dance numbers. Guests enjoyed the music of Emerald City.



The Kids Charity Ball

Sponsors

Gold Sponsor

EFI Communications

Silver Sponsors

G.E.S. Associates of Colorado

American Express Travel Management Services

WorldTravel Partners

Alcon Labs Vision Care

Bronze Sponsors

Addison Conference & Theatre Centre

Dr Pepper/Seven-Up

Event Source Professionals, Inc.

The Freeman Companies

H.D. Vest Financial Services

Irving Convention and Visitors Bureau

Krisam Group

Loews Anatole Hotel

Omni Hotels - Omni Mandalay Hotel

Square One Productions

Steve Kemble Event Design

Sunbelt Motivation & Travel, Inc.

Personalities International

Wild West Adventures

Yellow Rose Touring & Special Events

The Worthington Hotel

Festivities/Meeting Management Associates, Inc.

The National Association of Catering Executives, D/FW Chapter

Thank You!

David Cause • Cause & Effect Graphics

Tom Kirkpatrick • MegaGraphics

Automated Lighting by Vari-Lite

Scott Thompson • Showco Creative Services

Computer Language Research

Steve Coleman • Sprint Press

Mike Cline • MC Graphics

Dub Helm • Alphagraphics

Graeme Gordon • Gordon Group, Inc.

D & L Entertainment and Security Services, Inc.

Linda Sergeant • Bill Reed Decorations

Ken & Linda Thornton • Fun Factory Decorations

Stephanie Staubach • Personalities International

Deirdre L. Gordon • The Kerry Company Floral Designs

Cindy Sherriff • Commonwealth Trading

David R. Gisler • Freeman Decorating Co.

World Association of the Alcohol Beverage Industries

Banfi Vintners

Goody Goody Liquor Stores

The Julius Schepps Company

Paterno Imports

Glazer's Distributors

Molson Brewery

Willow Distributors, Inc.

Longhorn Distributors

Sal Sessa • EVENTS Photography

Leo Bary • Balloons to You

Gene Geaslin • Dallas Stage Scenery Co.

Get Involved! D/FW Chapter of MPI Offers a Plethora of Opportunities for Participation

By Sherri Cook, CMP
Sherri Cook & Associates
 and Jon Mitchell
Embassy Suites

Two-and-a-half months remain in our current administration year and the foundation for '94-'95 year is being laid. We want you to be in on the ground floor of planning for next year.

As we all know, it takes more than a handshake at a monthly meeting to get to know our fellow MPI members. Only through involvement and one-on-one personal contacts—often occurring after committee meetings—do we really get to know the planners and suppliers who make up the membership of the D/FW chapter.

By working on various committees and becoming involved, MPI acquaintances can become a family of friends and business associates. Your involvement is the key to achieving personal membership goals of education, contacts, professional growth, personal growth, community service and lifetime friends.

Remember, you get out of an organization only what you put into it. We encourage you to contact someone today to escort you at an upcoming meeting. When you get there, volunteer to serve on a committee!

Here's a listing of our current leadership—vice presidents in charge of various areas, and committee chairs—for you to contact for volunteer opportunities. Get involved!

You'll be glad you did!

Reengineer Your Career in Minneapolis

Reengineer your career at the MPI Annual Convention June 12-14 in Minneapolis.

Enjoy more than 50 workshops emphasizing the theme—"Reengineering the New Meeting Professional."

For more information see the advertisement on page 5, or call the MPI Conferences Department, 214-712-7751.

Opportunities for Involvement D/FW Chapter, Meeting Planners International

	Areas/Committees	
ADMINISTRATION:	VP - PAIGE BRAUN	214.233.9070
EDUCATION:	VP- MICHELLE CARTER	214.746.6656
Director of Education	Tony Cummins	214.827.1902
How to Breakfast	Lori Evans	214.438.4440
Brown Bag	Ellen Larson	214.761.7252
Richland College	Sherri Cook, CMP	214.732.9396
Executive Workshop	Jan Pollard	214.444.0044
PGA Awards	Kyle Smith	214.717.2411
CMP University	Patricia Tripp, CMP	800.421.4725
Administrator	Patricia Clancy	214.521.5151
FINANCE:	VP - CAROLYN CAREY, CMP	214.978.7119
Job Bank	Jeff Means, CMP	214.717.1400
MEMBERSHIP:	VP - O.D. O'DONNELL	214.691.4417
Member Orientation	Kathi Thompson	214.424.7119
Recruitment	Cathy Mason	817.540.9845
Prizes	Charlotte Merrill-Davis	817.267.6698
	Bettie Smith	214.917.3986
Buddy Program	Joe Bedsole	817.882.1603
Involvement	Sherri Cook, CMP	214.732.9396
Renewals/Retention	Sandi Galloway	214.922.9806
Phone Tree	Pat McCain, CMP	214.458.8692
PROGRAMS:	VP - SUE FERGUSON-FRY	214.841.6830
Programs Director	Cathy Mason	817.540.9845
PUBLIC RELATIONS:	VP - STEVE KEMBLE	214.943.5949
Community Awareness	Cindy Hughes	214.418.8602
Community Relations		
Community Service	Mary Lynn Novelli	214.556.2151
Charity Event		
Chapter of the Year	O.D. O'Donnell	214.691.4417
Newsletter	Gracie Hilton	817.467.7439
Newsletter Advertising	Stephanie Davis	214.851.2016
Government Affairs	Gregory Pynes	214.450.6202
Special Activities	Mary Lynn Noveill	214.556.2151

Committee Chairs Reporting to the President

Nominating Committee	Mary Cowart	214.248.4429
Awards Committee	Phyllis Firebaugh, CMP	214.556.9545
Mentor Committee	Debra Williams	214.363.1114
Twin Chapter	Bobby Bulger	214.341.5876
Chapter Marketing Liaison	Bill Boyd, CMP	214.401.0210
Chapter SIG Liaison	Linda Sergeant	214.823.3154
Education Foun. Fundraiser	Mary Jo Malone	214.979.9000
Conference Committee	Gail Lemaire	214.742.8200

Arlington

Planners consistently ask, "How much fun can you have in Arlington, Texas?"

Arlington offers serious trade show and convention facilities surrounded by serious fun. Theme parks, professional sports, luxurious hotels, restaurants are all here in Arlington, Texas. Right in the middle of the U.S., right in the middle of the Dallas/Fort Worth Metroplex and just 15 minutes from D/FW International Airport. That's where you'll also find our convention center showcasing a 48,600 sq. ft. column-free exhibit hall and our meeting professionals who are serious about making your event a huge success.

Anything less would be no fun at all. Call our trade show and convention experts at 817-265-7721 ext. 32.

Arlington Texas™

Midway of the Dallas/Fort Worth Metroplex

Call 817-265-7721 ext. 32

MPI

MEETING PLANNERS INTERNATIONAL®

Meeting Planners International is the world's largest association of meetings professionals with more than 12,000 members in 42 countries and 49 chapters and clubs. MPI's mission is to provide educational opportunities and recognition for those in the meetings industry. The association is committed to excellence in meetings, continuous international growth, research, a strong chapter network and high ethical standards.

MPI Internat'l Headquarters
INFOMART
1950 Stemmons
Suite 5018
Dallas, Texas 75207-3109
214-712-7700

MPI
Dallas/Fort Worth Chapter
10875 Plano Road
Suite 115
Dallas, Texas 75238
214-343-0555

Officers

President

Lesley Meyer, CMP
Sunbelt Motivation & Travel
214-401-0210

President-Elect

Diane Smith, CMP
Alcon Laboratories, Inc.
817-551-8077

Vice President/Administration

Paige Braun
DalCity Associates, Inc.
214-233-9070

Vice President/Education

Michelle Carter
Dallas Convention & Visitors Bureau
214-746-6656

Vice President/Membership

O.D. O'Donnell
Nightlife Talent & Mgt. Agency
214-691-4417

Vice President/Programs

Sue Ferguson-Fry
Cityplace Conference Center
214-841-6830

Vice President/Finance

Carolyn Carey, CMP
Allianz Life Insurance Co. of No. America
214-978-7119

Vice President/Public Relations

Steve Kemble
Steve Kemble Event Design
214-943-5949

Immediate Past President

Mary W. Cowart
Mary Cowart Meeting Consultants
214-248-4429

Board of Directors

Planners

Sherri Cook, CMP
Sherri Cook & Associates
214-732-9396

Alexandra Vurpillat

Carey Limousine
214-638-4828

Cathy Mason

USMotivation
817-540-9845

Phyllis Tackitt

The Tower Club
214-220-0403

Suppliers

Charlotte Merrill-Davis
Event Source Professionals
817-267-6698

Mary Lynn Novelli

Travel Resource/Sterling Hotels
214-556-2151

Linda Sergeant

Bill Reed Decorations, Inc.
214-823-3154

Patricia Tripp, CMP

Princess Cruises & Tours
800-421-4725

CURRENT Staff

Editor

Gracie Hatfield Hilton
The Write Stuff
Ph. & FAX 817-467-7439

Advertising Director

Stephanie Davis
Sheraton Park Central Hotel
214-851-2016



MPI

MEETING PLANNERS INTERNATIONAL®

The BEST keeps getting BETTER

Dallas/Fort Worth Chapter
10875 Plano Road • Suite 115
Dallas, Texas 75238



**DALLAS/FORT WORTH
CHAPTER**