

# CURRENT

Meeting Professionals International

December 1995

Dallas-Fort Worth Chapter

## President's Message

### D/FW Chapter Welcomes MPI to Dallas & PEC '95!

By Phyllis Firebaugh, CMP  
*Krisam Group*

The Dallas/Fort Worth Chapter of MPI has looked forward to and planned for December '95 for a long time! We are honored to welcome our industry associates to Dallas and to the Professional Education Conference—North America!



Phyllis Firebaugh, CMP  
D/FW Chapter President

With its energy and enthusiasm, Dallas is a natural for meetings and conventions. Why do meetings professionals choose our city? Because Dallas . . .

- has two airports that welcome more than 2,400 flights daily. DFW Airport alone is the second busiest in the world.
- is a snow-free central location with most cities in the country less than three hours away.
- has world-class collection of outstanding hotels, with more than 40,000 rooms available.
- has the second highest number of convention attendees in America.
- has more than 5,000 restaurants—more per capita than New York City.
- has more shopping per capita than anywhere!

(continued on page 14)

## MPI

MEETING PROFESSIONALS INTERNATIONAL®

December D/FW Chapter Meeting

### "Holiday on the Mandalay"

Annual Holiday Party with NACE

Thursday, December 21

Omni Mandalay Hotel

221 E. Las Colinas Blvd.

Irving, Texas 75039

214-556-0800

Orientation 6:00 p.m. Lashio Room

Reception & Registration 6:30 p.m. Mandalay Ballroom Lobby

Dinner & Dancing 7:30 p.m. Mandalay Ballroom

Complimentary Self Parking (Garage)

Valet Parking \$4.50

Room Rate \$69, single/double

R.S.V.P. to Joe  
by noon, Tuesday, Dec. 19  
214-774-1404

Advance Registration \$30  
Late Registration \$40  
Guest Registration \$35

See page 3 for more details and meeting reservation policy.

# PEC '95

# CURRENT

## MPI

MEETING PROFESSIONALS INTERNATIONAL®

### Dallas/Fort Worth Chapter

#### Newsletter Staff

##### Editor

Gracie Hatfield Hilton  
The Write Stuff  
Phone & FAX  
metro 817-467-7439  
e-mail: 75647.22@compuserve.com

#### Vice President/Public Relations

Dana Nickerson, CMP  
Square One Productions  
214-343-8067  
FAX: 214-343-6166

#### Advertising Chair

Kristi Hollomon  
J&S Audio Visual, Inc.  
214-241-5444  
FAX: 214-247-2590

#### Photographer

Mark Lazarow  
Mark Lazarow Photography  
214-380-0985  
FAX: 214-380-1431

#### MISSION STATEMENT

##### MEETING PROFESSIONALS INTERNATIONAL

Meeting Professionals International is the pivotal force in positioning meetings as a primary communication vehicle and a critical component of an organization's success. Meeting Professionals International leads the meetings industry by serving the diverse needs of all people with a direct interest in the outcome of meetings, educating and preparing members for both their changing roles and validating relevant knowledge and skills, as well as demonstrating a commitment to excellence in meetings.

The *CURRENT* is published 12 times yearly for the D/FW Chapter of Meeting Professionals International, the industry's leading educational and networking resource in meetings management. Statements of fact and opinion are the responsibility of individual writers and do not imply collective opinion of the officers or members of MPI.

# Upcoming MPI Events

## CHAPTER MEETINGS

### December 21, Thursday

Chapter Meeting  
Holiday Party  
Omni Mandalay  
6:30 p.m.

### 1996

### January 25, Thursday

Chapter Meeting  
"Taking Improvement to the Top"  
Dallas Medallion  
11:30 a.m.

### February 22, Thursday

Chapter Meeting  
"Developing Guest & Family Programs"  
Bronco Bowl  
6:30 p.m.

### March 28, Thursday

Chapter Meeting  
International/Gemelli Theme  
Hall of State  
11:30 a.m.

### April 25, Thursday

Chapter Meeting  
"ROI"  
Fort Worth  
6:30 p.m.

### May 23, Thursday

Chapter Meeting  
Annual Awards Banquet  
The Adolphus  
6:30 p.m.

### June 27, Thursday

Chapter Meeting  
"Team Building"  
Southfork Ranch  
6:30 p.m.

### July 18, Thursday

"Natural Resources"  
Venue TBA  
11:30 a.m.

## EDUCATIONAL OPPORTUNITIES

### December 9, Saturday

CMP Exam  
Wyndham Anatole Hotel  
Dallas

### December 10-12

'95 Professional Education  
Conference/North America  
Dallas

### January 17

Brown Bag Luncheon  
"Job Bank Benefits"  
Venue TBA  
11:30 a.m.-1:00 p.m.

### February 13

"How to" Breakfast  
"MPINet Workshop"  
Venue TBA  
7:30-11:30 a.m.

### February 15

Executive Workshop  
"College Bound"  
Venue TBA  
Time TBA

### February 28

Brown Bag Luncheon  
"Preparing for the CMP"  
Harvey Hotel Downtown  
11:30 a.m.-1:00 p.m.

### March 5-April 23

"Walk a While in My Shoes"  
Educational Seminars  
Tuesday evenings  
Various Venues  
5:30-7:30 p.m.

*NOTE: Chapter meeting plans are subject to change.*

*Check the CURRENT each month to confirm details.*

*For more information about association events, call MPI Headquarters, 214-712-7700.*

## Upcoming Events • Related Organizations

### NACE

December 21  
Omni Mandalay  
Holiday Party w/MPI  
6:30 p.m.



D/FW Chapter of MPI

# Holiday Gala



- MPI celebrates with NACE, IAEM, PCMA, TxACOM, HSMAI, ISES and more!
- A most elegant evening!
- Hosted Cocktail Reception
- Holiday Cheer Carolers Present Favorite Songs of the Season
- Sumptuous Three-Course Dinner
- Dance the night away to the sounds of the Center Stage Band
- Visit with Old Saint Nick
- Numerous PGA raffles
- Room rates available

Thursday  
December 21  
6:30 p.m.

*More details on pages 1 and 4.*

# Omni Mandalay

221 E. Las Colinas Blvd. • Irving, Texas 75039 • 214-556-0800

## Editor's Notes

# CURRENTly . . .

Always a cheerleader for MPINet, I've been a rare frequenter of the "first global on-line communications system designed specifically for the meetings industry." I would log on about once a week to check for news releases and briefly browse the message area.



**Gracie H. Hilton**  
The Write Stuff  
CURRENT Editor

That changed last month when the "Good Reading" thread in the Professional Issues public message area—caught my eye.

I discovered another "quote" aficionado—**Terry Paulson, PhD, CSP, CPAE**, an author and professional speaker on "Making Change Work"—and a sharing of favorite quotes, thoughts and phrases has begun!

Quickly, we discovered that we both share several favorites, such as this one from Mark Twain: "Let us endeavor so to live that when we come to die even the undertaker will be sorry."

And this one from Will Rogers: "Even if you're on the right track, you'll get run over if you just sit there."

An expression piques my interest when it's especially picturesque, clever or funny. In one of Peter Mayle's books, he draws a word picture of the early hours of the day: "The morning was still hesitating between dawn and daylight."

Listen to his description of another language: "French seems to emanate from somewhere at the back of the throat and then passes through a scrambling process in the nasal passages before coming out as speech."

Paulson's grandmother, "who read books and knew so many quotes," got him hooked on quotes, he said. "When I asked her about all the quotes and scripture she had memorized, she said, 'Terry, I hope you remember this. If you read something often enough, no one can take it away from you.'"

Winston Churchill, we both agree, is a frequent and favorite quotable. Here's what Churchill said about quotations:

"It is a good thing . . . to read books of quotation . . . quotations, when engraved upon the memory, give you good thoughts."

Short, pithy phrases by famous writers and thinkers—or by never-heard-of-before penmen—are my favorite. I'm attracted to little gem-like lines that reek with wisdom. Sometimes, a simple phrase can distill the wisdom of the ages.

Spiral notebooks, ring binders and little scraps of paper contain my personal collection—sometimes neatly typed; most times, hurriedly scribbled. Because treadmill miles are my favorite newspaper reading time, my gym bag is full of torn pieces of newspaper.

A few miscellaneous (unattributed) favorites:

- A diamond is a piece of coal that stuck with it.
- The harder one works, the luckier one gets.
- Today's peacock is tomorrow's feather duster.
- Love is a treasure that multiplies by division.
- Laughter is the hand of God on the shoulders of a troubled world.
- He who laughs, lasts.

A few miscellaneous attributed favorites:

- No problem can stand the assault of sustained thinking. (Voltaire)
- That which we obtain too easily, we esteem too lightly. (Thomas Paine)
- Don't get caught up in the thick of thin things. (Stephen Covey)
- Change is the very essence of life. (Anatole France)
- When I do good, I feel good. When I do bad, I feel bad. That's my religion (Abraham Lincoln)
- A merry heart doeth good like a medicine. (Proverbs 17:22)
- It's not that life's too short. It's just that you're dead so long. (saw this terrific expression on a rollerblader's t-shirt)

Finally: • Christmas is a drift fence across the prairies of the past that keeps friends from wandering too far from our range.

Happy Holidays! And please join our on-line "quoteshare."

—ghh ☺

## CURRENT Deadlines

Upcoming deadlines for copy and ads for the D/FW Chapter of MPI newsletter, the *CURRENT* —

ISSUE	DEADLINE
Jan. '96	Dec. 15, Friday
Feb. '96	Jan. 19, Friday
March '96	Feb. 16, Friday

Copy is cheerfully accepted early. *Because of production schedules, information received after the deadline day will not be included in the newsletter in progress.*

Late-arriving copy will be included in the next month's issue, if information is still timely.

Please mail 3.5 disk, Windows format—preferably in Microsoft Word or WordPerfect—to Gracie H. Hilton (The Write Stuff), *CURRENT* editor, 3020 Glasgow Court, Arlington, TX 76015.

To send information electronically—75647.22@compuserve.com

## Meeting Reservation & Attendance Policy

Registration fees will be collected at the door; advance payments are not accepted. If paying by check, please have check completed before approaching registration table. Reservations must be made by RSVP deadline for advance registration fee to apply. Late reservations and walk-ins will be accepted on a SPACE AVAILABLE basis. Cancellations must be made by the RSVP deadline. **No-shows will be billed.** Members are responsible for "no-show" charges for their guests. Guests are limited to attending three meetings per year (spouses are an exception).

## Alcohol Policy D/FW Chapter of MPI

The D/FW Chapter of MPI recognizes and supports the many legitimate uses of alcoholic beverages in the process of conducting our business and social activities. As a chapter, we also recognize that the use and consumption of alcohol at our functions carries with it the requirement to consume those beverages responsibly and in keeping with our professional code of ethics and conduct. We strongly oppose the abuse and misuse of alcohol. We further support those efforts that seek to inform our members of the issues concerning alcohol use and in offering assistance to any members seeking further information and/or assistance either personally or professionally.

## REGISTRATION CHANGES

Beginning in January, the D/FW Chapter will initiate several new options for registering for monthly meetings. In addition to the traditional RSVP via phone, members may respond by FAX (the newsletter will include a registration form) or by e-mail. Watch for details in next month's *CURRENT*.



Linda Sergeant

# Surfin' the MPINet Highway

By Linda Sergeant (Bill Reed Decorations)

*This column explores MPINet, the first global online communications system designed specifically for the meetings industry.*



## How Will MPINet be promoted at PEC?

Everyone is invited to "Network at Hard Rock" at the Hard Rock Cafe, Monday night, December 11, after the Dallas Street Festival in the West End! Sponsored by the Hard Rock Cafe, proceeds will go the MPI Foundation as a big thank you for giving birth to MPINet. This is a golden opportunity to visit with and get to know people from all over the world who are on MPINet today and attending PEC. Advance registration is \$25.00; it's \$35.00 at the door. The party begins at 8:00 pm. Hope to see you there!

There will be a MPINet Demonstration Center open Sunday, Monday, and Tuesday (Dec. 9-11) from 8:00 a.m.-5:00 p.m. at the Wyndham Anatole hotel. "The Great Texas Software Shoot-Out," takes place Monday morning. Educational sessions, "What is MPINet?" and "MPINet Means Business," are scheduled for Tuesday. Other sessions of interest include "Technofuture of the Meeting Industry" (Monday morning) and "Untangling the WEB: New Applications on the Internet for Meeting Professionals" (Tuesday afternoon).



## Why is it important to fill out my membership profile?

You must complete your membership profile in order to show up in the membership directory. If you don't do this, no one will be able to find your e-mail address. (To do this "click" on "Special" on the toolbar at top of screen. Then "click" on "Change Membership Entry" in the pull down menu. Be sure to include where you are from, what you do, any special interests or hobbies, and your telephone number if you wish. If you have problems doing this, just let me know. :)



## I have heard horror stories about picking up viruses on the net. Can this happen on MPINet?

All files stored in the MPINet libraries are scanned and completely safe to download. Our sysop is extremely diligent in making sure all data in the MPINet forum is clean. Private e-mail is a different story. One should be careful when surfing the net, just as one should be careful when the doorbell rings! The Information Highway has thousands of entrances and exits, side streets, little communities, each as colorful and different as the cultures and personalities that make up the global community. If a "bad guy" <g> sends you a file with a virus, he has to "ring your doorbell" first. In other words, you are notified you have message/file from this person. If you don't know this person . . . if you question in any way the message or file, you can simply "delete" it without "getting" it first. In other words, "don't answer the door!"



## How do I get to know the people on MPINet?

This is a frequent question, and I will expand on it in later issues. The first step is to post a "Hi, I'm Here!" type message in the "Welcome to MPINet" section of the message board. Secondly, quickly reply to everyone who sends you a message! But don't stop there! Continue to read the "Welcome to MPINet" section and reply to those who come online after you. Welcome them to MPINet! Remember, you were a "newbie" once, too.

Really want to meet who is on the Net?! Then, "Network At Hard Rock" Monday night during PEC! I would love to introduce you to all my netbuds!

## D/FW Chapter "Netters"

*As this issue of CURRENT goes to press, D/FW Chapter members among MPINet subscribers include:*

- Ellen Beckert (The Freeman Companies) 74117,244
- Bill Boyd, CMP (Sunbelt Motivation & Travel, Inc.) 73164,2013
- Inga Bowyer (ROI Meetings and Events, Inc.) 74161,114
- Gary Clark (AVW Audio Visual, Inc.) 73210,1377
- Sherri Cook, CMP (Sherri Cook and Associates) 74161,534
- Greg Elam (Dallas CVB) 74117,706
- Barbara Fett 74117,654
- Phyllis Firebaugh, CMP (Krisam Group) 74161,645
- Jim Follett, CHSE (InterContinental and Forum Hotels) 74117,545
- Steve Foster (Gray Line DAV El) 74161,523
- Betty Garrett, CMP (Garrett Speakers International) 74117,157
- M.T. Gnad (Independent Planner) 74161,732
- Sally Goldesberry, CMP (Meetings & Exhibits Specialist:)74117,121
- Mary Guzman (Omni Mandalay Hotel) 74161,1037
- Gracie Hilton (The Write Stuff) 75647,22
- Sharon Horton (ITT Sheraton) 102217,1057
- Pat McCain, CMP (Krisam Group) 74161,360
- Debbie Meyers (Bravo! Entertainment) 74161,334
- Jim Monroe (Gale Sliger Productions) 74117,745
- Christine Moore (Dallas Fan Fares) 102642,3115
- Dana Nickerson, CMP (Square One Productions) 74161,1027
- Mary Lynn Novelli (Sterling Hotels & Resorts) 72643,2175
- Darla Ogle (HyperGraphics Corporation) 74642,1064
- Virginia Paxton (Ginny's Gifts) 74161,410
- Lodi Palmer, CMP (Meeting Professionals International) 74117,751
- Jan Pollard (Omni Hotels Nat'l Sales Office) 102706,3435
- Greg Pynes (Town of Addison) 74117,702
- Amy Redfearn (Meeting Professionals International) 72662,3505
- Sal Sessa (Events Photography) 102163,2330
- Linda Sergeant (Bill Reed Decorations, Inc.) 74117,705
- Tracey Smith (Computer Language Research) 74161,540
- Hattie Hill-Storks (IPI, Inc.) 74117,700
- Marsha Veach (Meeting Professionals International) 74117,314
- Linda Vest (State Farm Insurance) 74161,255
- Bob Walker (AVW)74117,644
- Mollie Wallace, CMP (Miller-Freeman) 73422,3300

*Do you have questions you would like to see answered in this column? Please contact Linda Sergeant (Bill Reed Decorations, Inc.), 333 First Ave. Dallas, TX, 75226; FAX: 214-823-3191; CompuServe address: 74117,705.*

## CMP Updates

### Candidates Prepare for Exam

Approximately 20 candidates who will take the upcoming Certified Meeting Professional (CMP) exam at the Wyndham Anatole in Dallas Dec. 9 have prepared for the exam through the CMP Study Course or CMP University.

Candidates for the exam are studying under the direction of other CMPs and regional experts in the fields of meeting objectives, trade shows, audiovisual, site selection, budgeting, food and beverage, transportation, promotion, negotiating, program planning, and other relevant topics.

Thanks to Greg Pynes (Addison Conference and Theatre Centre) and Gretchen England (Hilton Hotel and Conference Center, DFW) for hosting these groups.

### Question Bank Updated

The CMP exam will continue to be 150 multiple choice questions, but the question bank is being updated, according to Susan Krug at the Convention Liaison Council (CLC):

D/FW Chapter members Colleen Albert Rickenbacher, CMP (Dallas Convention and Visitors Bureau) and Lisa South, CMP (Ducky Bob's Party Rentals) were among Certified Meeting Professionals from all over the U.S. who gathered in Atlanta last summer to write new questions for the exam.

### Summer CMP Exam Info, Preparation Scheduled

Applications for the June 1996 CMP exam must be in to the CLC no later than March 22. Approved applications must be followed by a letter to CLC by May 13, indicating intention to sit for the exam June 22 in Dallas and other cities. The exam will be administered in Nashville July 27 during the MPI Annual Meeting.

The CMP Study Course and CMP University will be repeated in the spring—dates to be announced. A Brown Bag (educational) Lunch featuring "Everything You Need to Know about Applying for the CMP" is scheduled for February. Dates will be announced in the *CURRENT*.

Questions? Call CMP Chair Pat McCain (Krisam Group), 214/458-8692.

## Educational Opportunities

### CMF '95

Do you want to be a future leader on the D/FW MPI board?

A great learning experience awaits those who want to share in the leadership and growth opportunities of such professional involvement.

See p. 9 for more information.

### PEC '95

See p. 8 for more information.

### January 'Brown Bag' Features Job Bank

Are you seeking a new position or an applicant for a open position in your company? Discover the benefits of the MPI Job Bank. Chairperson Traci Bower (Reunion Ranch) will explain what happens to a resume when it's submitted to the D/FW Chapter Job Bank. A

panel of meeting professionals (hoteliers, CVBs, association and corporate planners, event planners) will discuss what jobs skills their positions require. Mark your calendar—January 17, 11:30 a.m.-1:00 p.m., venue TBA. The program is free of charge. Bring your own lunch; drinks will be provided.

CONTACT: Melissa Parks (American Fire Sprinkler Association) 214-349-5965

### Executive Workshop Features College Education

At the February 15 Executive Workshop, "College Bound," learn about 'competency based degrees' for undergraduate and Executive MBA college degrees. Learn how to earn some college credit for the skills you've honed through your professional work history. Time and venue TBA.

CONTACT: Colleen Rickenbacher, CMP (Dallas CVB), 214-746-6628

### February Brown Bag Luncheon Features CMP Exam

At the February 28 Brown Bag Luncheon learn all about the Certified Meeting Planner (CMP) exam—how to apply, study and sit for the CMP Exam and how being a CMP can enhance your career. The 11:30 a.m.-1:00 p.m. event will take place at the Harvey Hotel Downtown. The program is free of charge. Bring your own lunch; drinks will be provided.

CONTACT: Jim Follett, CHSE (Intercontinental Hotels & Resorts), 214-964-3139.

### 'Walk a While in My Shoes' Returns

Spring dates for "Walk a While in My Shoes," the chapter's popular educational working partnership program are March 5-23. The class will meet from 5:30-7:30 p.m. at various venues throughout the metroplex.

"Walk a While in My Shoes" is a limited enrollment course—a joint project with Richland College. Attendees are required to attend seven of the nine evening sessions. Cost for the session will be announced at a later date.

CONTACT: Susie Carr, CMP (Annuity Board of the SBC), 214-720-0511



## Prototype Chapter Mentor Program Kicks off in January

By Fred Knieberg, CMP  
AFK & Associates, Inc.

In accordance with its mission statement (see box, right column), the Dallas/Fort Worth Chapter of MPI has established a prototype MPI Chapter Mentor Program which will be kicked off next month.

What is mentoring? Look at your organization. Is there someone who appears to be on a "fast track" to prominence, who is far ahead of his peers of the same age and level of experience? Most likely, that person is either a member of the controlling family—or has a mentor shortening the normal time frame needed to climb the ladder of success.

Webster defines a mentor as a wise, loyal advisor; or as a teacher or coach. Today's mentor is likely a wily veteran who spots a promising rookie with a special talent or spark—one who probably hopes to take over the veteran's position one day!—and decides to take him/her under his/her wing.

In Greek mythology, when Ulysses left his family to go off to the Trojan Wars, he appointed Mentor (the son of Alcimus) as guardian of his household. He was charged with the protection of Ulysses' son, Telemachus, and wife, Penelope. He was to look after them and provide guidance in the son's upbringing and education.

The Mentor Committee has created a structured program to enhance the development of effective mentor/mentoree relationships, involving a defined process of review, evaluation, and reward for each six-month mentor contract.

The committee produced a guide outlining the Mentor Program objectives, process, and expectations. An introduction and training session will be scheduled for all volunteer participants in January 1996.

Mentoring is a one-on-one relation-

ship between two individuals, and the benefits and rewards are substantial for both. New members learn from "seasoned" veterans and the more experienced members become exposed to fresh, new ideas. While a mentor cannot teach one to be a planner or supplier, a mentor *can help one become a better one much faster*. The sharing of ideas and experience enhance expertise and limit the "hard knocks" along the way.

Pick up a copy of the Mentor Guide and an application at the December and January chapter meetings. Or take immediate advantage of this unique opportunity and complete the mentor or mentoree application enclosed in this issue.

President-elect Mary Lynn Novelli (Sterling Hotels & Resorts) is chairperson of the Mentor Committee. Co-chairs are Fred Knieberg, CMP (AFK & Associates, Inc.) and Maurine Allen, CMP (Sunbelt Motivation & Travel, Inc.).

Committee members are Greg Pynes (Town of Addison) and Sally Goldesberry, CMP, (Meetings & Exhibit Specialists).

Questions? Contact Fred Knieberg, CMP, day or evening, at 214-361-4316.

### MENTOR PROGRAM MISSION STATEMENT

To encourage experienced professionals, to nurture and assist in the development of newer members of the meeting industry and to provide a structured environment for this effort.

### Professional Growth Awards

provide educational scholarship assistance for D/FW Chapter members.



Help support the PGA—and maybe win a fun prize!—by purchasing tickets at each monthly meeting. Tickets are \$1 each, or 6 for \$5.

For more information contact  
PGA Chair Sheryl Kuhn (Harvey Home Office),  
214-788-0001 · FAX 214-687-0357



Dallas/Fort Worth Chapter, MPI  
Executive Workshop

## Pursuing a College Degree: A Walk Through the Process

February 15, 1996  
4:00-5:30 p.m.

Look for more information in the January CURRENT!

# PEC '95

## MPI Announces New Educational Offerings for PEC—North America '95, Dec. 10-12

A host of new educational offerings will be unveiled during MPI's 1995 Professional Education Conference (PEC)—North America December 10-12 at the Wyndham Anatole Hotel in Dallas, Texas.

PEC '95 offers more focused general sessions, two new educational tracks, a technology laboratory, and a new executive track pilot program.

Entitled "Elevating Meetings to Achieve the Bottom Line," the PEC—North America general sessions feature Alan Weiss Ph.D., Rick Pitino, Roger J. Dow and Sue A. Hershkowitz, CSP.

Two new tracks have been added to

elevate skills in the areas of international meeting management and the use of technology during more than 70 workshops in a seven track series. A technology laboratory, manned by industry experts, will be offered on Monday, December 11 and Tuesday, December 12.

Futurist Terry Brock, president of Achievement Systems, Inc., will consult with individuals on the most advantageous uses of technological tools during the hands-on, interactive experience. Participants will explore the latest meeting industry software as well as on-line tools.

The international track provides infor-

mation about negotiating techniques, customs and protocol.

Fifty senior-level meeting professionals will participate in the new executive track pilot program.

All seven educational tracks are now segmented by topic to make workshop selection easier and more relevant.

The tracks include: Technology, Personal Development, Meeting Management, Sales & Marketing, Legal Issues, Career Development, and International Issues. Each of the 70 workshops is an exploration of important subjects led by industry experts and professional speakers.

## Whitney, Gibbons PEC '95 Co-Chairs

MPI D/FW Chapter members Dave Whitney (Dallas Convention & Visitors Bureau) and Sally Gibbons (Wyndham Anatole Hotel) are co-chairs for PEC '95.

Whitney, who has more than 20 years of experience in the hospitality industry, is president & CEO of the Dallas CVB. He has seen convention sales exceed one million new future room nights sold in each of the past two years.

Sally Gibbons has served as director of marketing for the Wyndham Anatole Hotel (formerly Loews Anatole) since 1990. She has 20 years of hospitality experience and has been involved with MPI at both the international and chapter levels.



**Dave Whitney**  
Dallas CVB



**Sally Gibbons**  
Wyndham Anatole

*meetings*  
**ELEVATING**   
*to achieve the bottom line.*

**1995 PROFESSIONAL EDUCATION**

**CONFERENCE—NORTH AMERICA**

**DECEMBER 10-12, 1995**

**WYNDHAM ANATOLE HOTEL**

**DALLAS, TEXAS**

- Two General Sessions
- 75 Workshops
- Unique Networking Forums
- Five Learning Tracks

For more information and  
registration materials,  
call 1-214-712-7730.

**MPI**

MEETING PROFESSIONALS INTERNATIONAL®

*Committed to Educational Leadership*



## Quain Keynote Speaker at MPI Chapter Management Forum

Bill Quain, Ph.D. will address participants of MPI's Chapter Management Forum (CMF) on Saturday, December 9, at 1:00 p.m. prior to the association's 1995 Professional Education Conference (PEC)—North America at the Wyndham Anatole Hotel in Dallas, Texas.



**Sally Goldesberry,**  
CMP  
Meetings & Events  
Specialists  
CMF Chair

"I am very excited to have Dr. Quain as our keynote speaker at the CMF," says D/FW Chapter member Sally Goldesberry, CMP (Meetings & Exhibit Specialists). Goldesberry is MPI Chapter Management Forum subcommittee chair.

"His message will be valuable to MPI members in enhancing their personal goals, as well as their chapters' goals," Goldesberry said.

### Revitalizing Meeting Strategies

In his address, "Revitalizing Your Meeting Strategies," keynote speaker Quain will demonstrate ways to achieve the most from both personal and professional lives via goal setting and leadership styles vs. management styles, all within the context of orchestrating meetings. According to Quain, who has written six books on marketing, meeting planning and sales, attendees will be RE-newed, RE-invigorated, and RE-vitalized.

A frequent speaker at industry and association conventions, Quain serves as associate professor of hospitality management for the University of Central Florida. Prior to entering the academic world, he was employed within the hospitality industry. His articles have appeared in several publications, including *The Cornell Hotel and Restaurant Administration Quarterly*.

### CMF Encourages Leadership

The purpose of the CMF is for members to gain valuable information on ways they can become more involved in chapter activities.

MPI's Chapter Relations Committee (CRC) surveyed evaluations from past CMFs, resulting in 21 roundtables featuring topics such as: new ideas to increase chapter involvement, leadership development, improving educational programs, the benefits of effective marketing, and demystifying international awards.

The CMF specifically addresses key goals of educational leadership and elevating meetings as a strategic tool as out-

lined in MPI's strategic plan. As stated in the plan, MPI will be the leading resource and dissemination point for general and specific knowledge and education in the meeting industry. MPI also promotes the strategic use of meetings as a powerful communication tool and essential component of an organization's success.

### Powdermaker and Circle R Ranch to Host CMF Attendees

After the forum, all CMF attendees are invited to attend the Texas-size barbecue at Circle R Ranch from 6:00-9:00 p.m. D/FW Chapter member Alan Powdermaker is president of Circle R Ranch.

"This CMF promises to be a special fun learning event," says Bobette Gorden, MPI Chapter Relations chair. "Don't miss this opportunity to increase your leadership skills while networking with others."

## MPI

MEETING PROFESSIONALS INTERNATIONAL

### RE:CMF Resource Exchange Dallas '95

FOR MORE  
INFORMATION ABOUT  
THE PROGRAM CALL  
1-214-712-7705.

## MPI

MEETING PROFESSIONALS INTERNATIONAL  
Committed to Educational Leadership

### PROFESSIONAL EDUCATION CONFERENCE- NORTH AMERICA DALLAS, TEXAS DECEMBER 9-12, 1995

#### FREE CHAPTER MANAGEMENT FORUM WORKSHOP "REVITALIZING YOUR MEETING STRATEGY"

**SPEAKER:**  
DR. WILLIAM J. QUAIN PHD  
\*PLUS 18 ROUNDTABLE DISCUSSIONS

**WHEN:**  
SATURDAY, DECEMBER 9, 1995  
(NEW DATE AND TIME) 1-5 P.M.

**WHERE:**  
WYNDHAM ANATOLE HOTEL

**WHY:**  
TO GAIN INVALUABLE INFORMATION ABOUT DEVELOPING YOUR LEADERSHIP SKILLS AS WELL AS HOW TO REVITALIZE THE ENTHUSIASM WITHIN YOUR CHAPTER.

**TEXAS-SIZED BARBECUE**  
SPONSORED BY CIRCLE R RANCH  
FOLLOWING THE AFTERNOON FORUM, ALL CMF ATTENDEES ARE INVITED TO ATTEND THE TEXAS-SIZED BARBECUE AT CIRCLE R RANCH.

COME DRESSED IN CASUAL/WESTERN ATTIRE ON SATURDAY, DECEMBER 9, (NEW TIME) 6-9 P.M. READY TO RELAX WITH HORSE-DRAWN HAYRIDES, WESTERN BARBECUE, DANCE REVIEW AND A LIVE BAND! BUSES BEGIN LOADING AT 5:45 P.M. - 6:15 P.M.

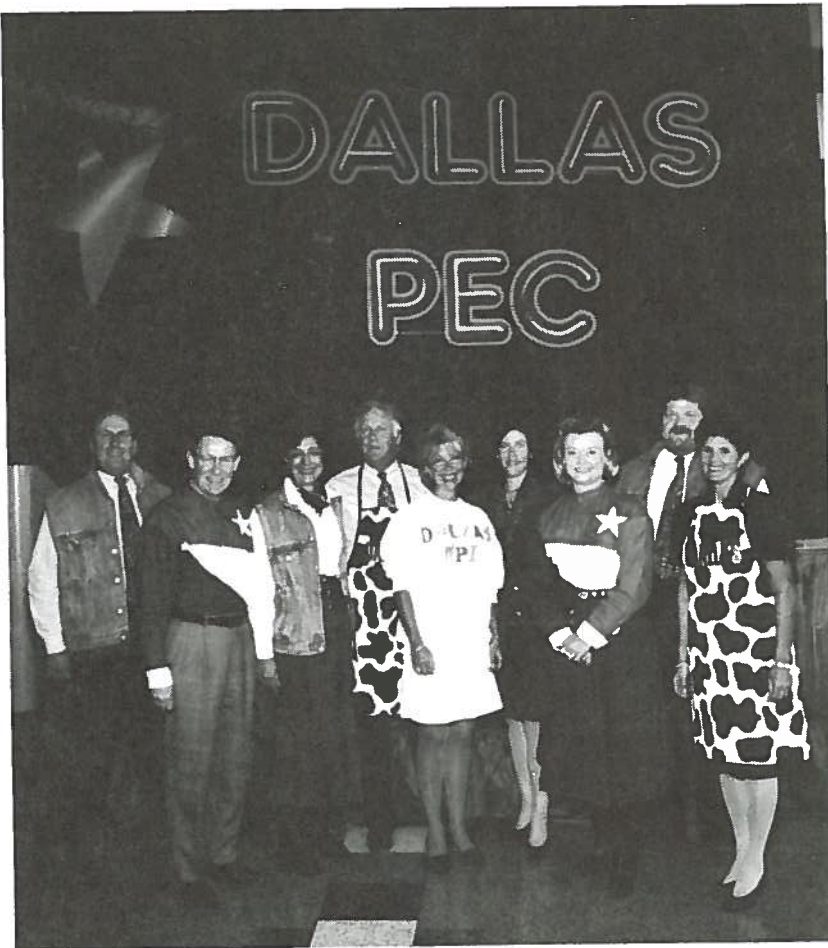
YOUR BUS AND BARBECUE PASS WILL BE INCLUDED IN YOUR CMF REGISTRATION PACKET PROVIDED AT THE AFTERNOON FORUM. YOU MUST HAVE A PASS TO ATTEND THE EVENING EVENT!

\* To register please check the CMF box on the Conference Registration Form.

# PEC '95

December 10-12 • Wyndham Anatole

## D/FW Chapter Gears Up for PEC '95



LEFT: Members of the Host Committee for PEC '95 are **Dave Whitney** (Dallas Convention & Visitors Bureau); **Greg Elam** (Dallas CVB), **Ellen Beckert** (The Freeman Companies), **Alan Powdermaker** (Circle R Ranch), **Sally Gibbons** (Wyndham Anatole), **Lesley Meyer, CMP** (Sunbelt Motivation & Travel, Inc.), **Ron Trammell** (Mary Kay Cosmetics) and **Colleen Rickenbacher, CMP** (Dallas CVB). Also pictured is **Lodi Palmer, CMP**, Director of Conferences and Meetings for MPI, fourth from right.

*Photos by  
Mark Lazarow Photography*

The '95 Professional Education Conference — North America is here! Dallas and the D/FW Chapter is pleased to host one of MPI's largest conferences Dec. 10-12 at the Wyndham Anatole Hotel. Preceding the PEC is the Chapter Management Forum Dec. 9.



Welcoming PEC attendees—and performing a myriad of other duties—will be members of the D/FW Chapter's Hospitality Committee. They will be easily recognizable in the official host uniform. Its main component is a stonewashed denim vest with embossed Dallas skyline logo, modeled by **Ginger Cameron** (Hunt Promotions Inc.). A Texas flag bandanna and a host's lapel button completes the official uniform.

# PEC '95



A cookbook featuring favorite Texas or regional specialties from among the D/FW Chapter membership—as well as from noted Dallas/Fort Worth area chefs and state and local celebrities—*Texas Cookin'* is a special gift for all attendees at the PEC Conference/Dallas in December. The remainder of the cookbooks will be sold—\$15 each—to raise funds for the 1995-96 MPI Foundation Fundraiser. Cookin' up interest in "Texas Cookin'" are **Mary Lynn Novelli** (Sterling Hotels & Resorts), **Lesley Meyer, CMP** (Sunbelt Motivation & Travel, Inc.), **Joe Diaz** (Delta Air Lines), **Carolyn Carey, CMP** (SEI Incentives), **Ellen Larson** (Wyndham Anatole Hotel), and **Kathy Senese** (Omni Hotels).

## The D/FW Chapter Salutes these PEC Sponsors

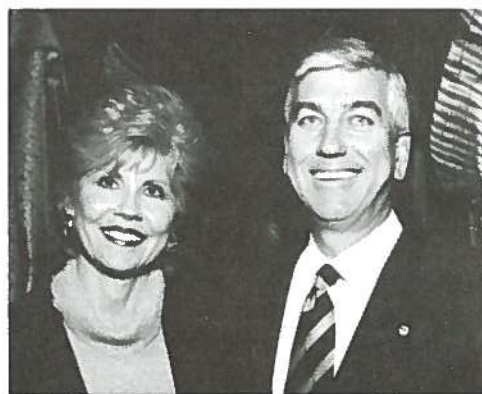
Circle R Ranch  
City of Addison  
Irving CVB  
Stouffer-Dallas Hotel  
Frito Lay, Inc.  
City of Farmers Branch

### *Thanks to these contributors to the amenities project:*

Crystal Tissue Paper Co.  
Dallas CVB  
Frito-Lay, Inc.  
Gambrinus Company  
Grapevine CVB/Delaney Vineyards  
Mary Kay Cosmetics  
Marriott Corporation  
MC Graphics  
Mrs Baird's Bakery  
Neiman Marcus Corporate Sales  
Omni Hotels of Texas/Omni Nat'l Sales  
Sabre Decision Technologies  
Southwest Airlines  
Taco Bell Corp.  
Tiffany & Company



The D/FW Chapter version of the Dallas Cowboys Cheerleaders encourage 1994 PEC attendees in Vancouver to "Come to Dallas" in 1995. Expect an encore performance from this hairy group at PEC '95!



Extending a special welcome to attendees of PEC—North America are 1995-96 D/FW Chapter President **Phyllis Firebaugh, CMP** (Krisam Resorts & Hotels), and **Bill Boyd, CMP** (Sunbelt Motivation & Travel, Inc.), MPI's immediate past president.

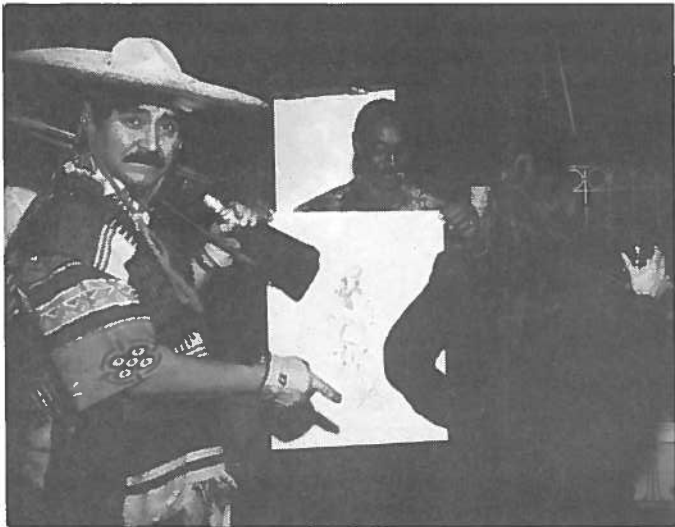
## November Meeting Highlights

# 'Shake, Rattle & Roll'—Creating Ambience, Fun and Excitement at Meetings

The MPI D/FW Chapter's November 16 meeting at Embassy Suites Dallas Park Central provided some ideas on how to use music and comedy to add "ambience, fun and excitement" to meetings.

Father Vito and the "Pregnant Nun"—Susan E. Conley, CMP (Special Events Coordinator)—helped with the announcements.

The cocktail reception featured music, "buttsketch" artists and palm readers. Entertainment at the dinner meeting featured "4 Out Of 5 Doctors," a Dallas comedy team—plus music by "The Briefcase Blues Band."



*Photos by  
Mark Lazarow Photography*





**Bill Boyd, CMP** (Sunbelt Motivation & Travel, Inc.), **Amy Redfearn** (MPI Headquarters), D/FW Chapter President **Phyllis Firebaugh, CMP** (Krisam Hotels & Resorts) and **Fred Knieberg, CMP** (AFK & Associates, Inc.) announced the new MPI Chapter Mentor Program, which will begin next month. (See related article, page 7.)



"Chef" **Gail Lemaire** (The Adolphus) takes an order for copies of "Texas Cookin'" from **Donna Johnson** (SuperShuttle). The cookbook, a gift for PEC attendees, will also be a fundraiser for MPI Foundation.



LEFT: President **Phyllis Firebaugh, CMP** (Krisam Hotels & Resorts) encourages participation in PEC '95.



RIGHT: Committee members for the November meeting: **O.D. O'Donnell** (Nightlife Talent & Management), **Esther Wigley, CAS** (Appointments Promotional Advertising) and **Alainna Webb** (Meeting Management Association/Festivities)

### THANK YOU!

Many thanks to the individuals and companies whose time, talents, and expertise contributed to the enjoyment of the November meeting.

Thanks to **O.D. O'Donnell** (Nightlife Talent & Management Agency) and **Alainna Webb** (Meeting Management Associates/Festivities), for providing the entertainment. Thanks to **Gary Walters** of the comedy team, 4 out of 5 Doctors. Moderator was **Michael Hamilton** (Mystery Dinner Playhouse).

Thank you to **Jeannine Mason**, general manager of Embassy Suites Park Central. Thanks to **Linda Thornton** (Fun Factory) for decorations and balloons.

**K.C. Ofshe** (Bread & Butter) provided the centerpieces and greenery. Thanks to **John Jakob** (Abbey Party Rentals) for linens. **Esther Wigley, CAS** (Appointments Promotional Advertising), provided the "Blues Brothers" style sunglasses.

**Krandel Lee Newton** (The Original Buttsketch Artist) and **Susan Barber** (Palm Reader) entertained reception attendees.

**Marsha Singer** (Executive Connection) provided a \$30 gift certificate to Rafael's Mexican Restaurant for the evaluation drawing.

Thanks to **Custom Video Services** for videotaping the program.

## President's Message—PEC '95

continued from page 1

- has teams playing all major sports.
- has 40 lakes within a 100-mile radius—and more boats than horses or cattle.
- with the surrounding ranches—plus the Mesquite Rodeo—a memorable

“western” experience is easily within reach.

- is the #1 leisure and #1 business destination in all of Texas.
- has more than 97,000 people employed within the hospitality industry.
- has more than 160 museums, galleries, and artistic attractions—and more than 110 live performances nightly.
- recently expanded the Dallas

## Nominations Sought Looking toward '96-97 Leadership

As 1996 fast approaches, the Nominating Committee requests your help in developing a pool of outstanding candidates as potential leaders for 1996-97.

If you are willing to serve in the important role of an officer or board member, please complete the official 1995-96 Request for Nominations form—inserted in this issue of the *CURRENT*.

Chapter leadership and direction should be of major concern and importance to every member. Additional nominees for board positions are encouraged from all members.

•Any member in good standing may be considered for office.

•No two members of the same organization can serve simultaneously on the Board of Directors.

•Supplier members cannot constitute a majority of the Board.

•The Board of Directors is made up of 17 chapter members (eight board members and nine officers).

Detailed information on the nomination process is on pages 11-13 in the Policies and Procedures section of the 1995-96 D/FW Membership Directory.

The Request for Nominations form must be returned to Diane Smith, CMP, (Alcon Labs) no later than Jan. 15 (postmarked no later than Jan. 13).

Convention Center (DCC) and now has five separate lobbies and pre-function areas, 105 meeting rooms, and enough exhibit space on one floor to place the ocean liner Queen Mary on its side and still have room for the Spruce Goose—the world's largest plane.

•has a popular gateway park next door to the DCC for outdoor activities. Pioneer Plaza features the world's largest bronze monument, depicting a Texas Longhorn cattle drive with 50 steers and three cowboys.

•has the largest privately owned exhibit hall—Market Hall—plus Infomart and Fair Park as large exhibit centers.

•has the West End festival marketplace, with 100+ outlets and more than 3,000,000 visitors annually.

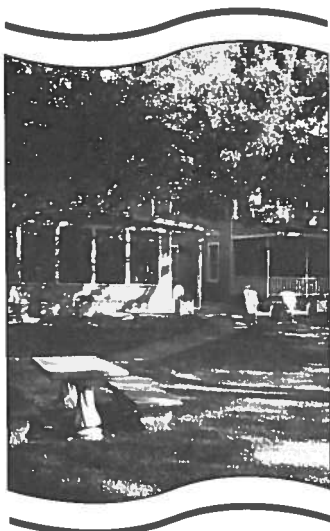
•will have a light-rail system within the downtown area beginning in June 1996.

These are just a few of the reasons we are confident our visitors will enjoy being in Dallas in December—and will want to return with their conventions and meetings often.

We have a saying around here: “Dallas fulfills its promises!” Our facilities and people work well together and also help us deliver on our MPI theme—“Commitment to Excellence.”

Excellence is the exceptional drive to exceed expectations. We hope you feel we accomplished that!

Thanks for coming, y'all!



INN ON THE RIVER

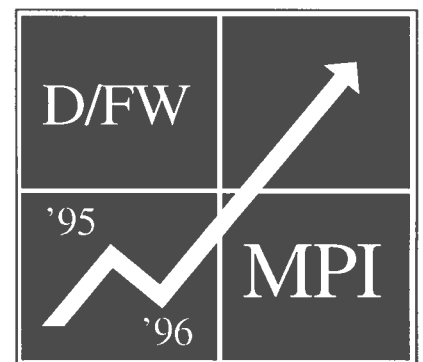
For meeting information and brochures, contact Kathi Thompson at 214-424-7119  
205 S.W. Barnard St. • Glen Rose, Tx. 76043 • 817-897-2101 • Fax 817-897-7729

## The “Inn” Way To Take Care of Business.

Nestled in the trees along the bank of the Paluxy River, the historic Inn On the River has perfected the art of taking care of business. With a peaceful atmosphere that lacks interruptions, you will find that your work is completed with great efficiency.

- State-of-the-Art Conference Center
- Audio and Video Equipment
- Electronically-Controlled Screen
- Fax Machine, Conference Phone, Copier
- 22 Rooms
- Gourmet Meals
- Tranquil and Creative Haven

*Commitment*  
to  
*Excellence*



*Exceeding Expectations!*

D/FW MPI  
**Stars!**

# Salute to the Stars!



Star Brand Ranch  
Spectra Communications



GES Exposition  
Infomart



Addison Conference & Theatre Center  
Omni Mandalay Hotel  
Dallas Arboretum  
Majestic Theater  
Dallas Convention & Visitors Bureau  
Bill Reed Decorations  
J & S Audio Visual  
Yellow Rose Tours  
Bauer Audio Visual  
Cannonball Rental  
Ducky Bobs

D/FW MPI  
**Stars!**

*D/FW MPI STARS are members who contribute services or products to chapter meetings and special events.*

## If You Stay In Arlington, Texas You'll Be In The Middle Of Dallas & Fort Worth.

Plan your next meeting in Arlington, and you'll only be 15 minutes away from Dallas, Fort Worth and D/FW International Airport. Plus, you'll be near Arlington's theme parks, professional sports, a variety of hotels, restaurants and the Arlington Convention Center with a 48,000 sq. ft. column-free exhibit hall. If it's a great meeting site you're after, visit Arlington. If not, you could be going nowhere fast. For more information and to find out if you qualify for a free gift, call 1-800-433-5374. **Arlington, Texas**



## If Not, You Run The Risk Of Being In The Middle Of Nowhere.

# MEMBERSHIP NEWS

## 'New Kids on the Block'

## D/FW Chapter Welcomes 16 New MPI Members!

**Valerie S. Barrilleaux**  
Maison Dupuy Hotel  
1001 Toulouse Street  
New Orleans, LA 70112  
504/586-8000  
504/525-5334 (fax)  
*Supplier*

**Barbara C. Bodeman**  
Doubletree Hotel  
300 Canal Street  
New Orleans, LA 70130  
504/599-3023  
504/599-3000 (fax)  
*Supplier*

**Joshua R. Brown**  
Hilton Hotels Corporation  
4835 LBJ Freeway, Suite 535  
Dallas, TX 75244  
214/701-3784  
214/701-3747 (fax)  
*Supplier*

**Jessica G. Burrow**  
WorldTravel Trade Shows &  
Conventions  
5420 LBJ Freeway, Suite 410  
Dallas, TX 75240  
214/702-1030  
214/851-6739 (Fax)  
*Planner*

**Lori C. Chance**  
EDS Credit Union Services  
5400 Legacy B3-1E-24  
Plano, TX 75204  
214/604-2323  
214/604-4152 (fax)  
*Planner*

**Susan A. Foster**  
Mobil Oil Corporation  
2604 Marta  
Irving, TX 75060  
214/951-4534  
214/951-4014 (fax)  
*Planner*

**Paul W. Gleason III**  
Adam's Mark Hotel  
2900 Briarpark  
Houston, TX 77042  
713/978-7400  
713/735-2727 (fax)  
*Supplier*

**Mora Kennington**  
Milltronics  
709 Stadium Drive  
Arlington, TX 76011  
817/548-2090  
817/277-3894 (fax)  
*Planner*

**Susan P. McMahon**  
Clarion Hotel  
1981 North Central Expressway  
Richardson, TX 75080  
214/644-4000  
214/644-0135 (fax)  
*Supplier*

**Diane J. Murray**  
Mentor Graphics  
12377 Merit Drive, Suite 490  
Dallas, TX 75251  
214/419-5012  
214/419-5011 (fax)  
*Planner*

**Patrick L. Rapagnani**  
Kea Lani Hotel  
4100 Wailea Alanut  
Wailea, HI 96753  
808/875-2227  
*Supplier*

**Kim A. Smajstrla**  
Clarion Hotel  
1241 West Mockingbird Lane  
Dallas, TX 75247  
214/630-7000  
214/638-6943 (fax)  
*Supplier*

**Bonnie L. Warren**  
Sprint  
5420 LBJ Freeway, Suite 1700  
Dallas, TX 75024  
214/405-5160  
214/405-5052 (fax)  
*Planner*

**Yolanda Wasacz**  
Intelecom, Inc.  
1950 Stemmons Fwy., Suite 2027  
Dallas, TX 75207  
214/748-4789  
214/748-4546  
*Supplier*

**Dale L. Whitmer**  
Manitou Communications  
1701 Gateway, Suite 349  
Richardson, TX 75080  
214/918-9846  
214/918-9069 (fax)  
*Planner*

**Sonia I. Worrall**  
Nortel  
2221 Lakeside Blvd.  
Richardson, TX 75082-4399  
214/684-8566  
214/684-3726 (fax)  
*Planner*

## Meetings excellence at an affordable price.

*Meeting professionals have discovered a unique four-diamond resort on Florida's west coast.*

*Quality meeting facilities. Beachfront charm.*

*Abundant recreational options.*

*Plus an uncommon level of friendly, responsive service. All at a surprisingly fair price.*

*Discover why groups of 50 to 500 people return again and again.*

*Discover the meetings excellence of TradeWinds.*

*TradeWinds*  
RESORT ST. PETE BEACH FLORIDA

30,000 sq. ft. of meeting space • 577 rooms (207 suites) • 18 tropical acres  
For a conference portfolio on the largest beachfront resort  
on Florida's central west coast, call Ron Samardzia at 813-367-6464.

## MPI

MEETING PROFESSIONALS INTERNATIONAL®

## D/FW Chapter

Chapter  
of the  
Year  
1994

Chapter  
Newsletter  
Award  
1995

Chapter of the Year 1988  
Chapter of the Year 1989



## MEMBERSHIP NEWS

# Unemployed Members Aided by MPI Membership Benefits

By Pat McCain, CMP  
*Krisam Hotels & Resorts*

The meetings and hospitality industry is constantly changing. Sometimes that means downsizing and you can find yourself between jobs.



Pat McCain  
Membership Dir.

Those who have been in this position know how unsettling this time can be. Friends at MPI are here to help. We want to support you and help you network.

A couple of months ago we talked about how several of our members found jobs through their contacts at MPI.

If you are between jobs, contact the MPI International office regarding your address and job change. Ed Griffin, executive vice president/CEO of MPI will respond with a letter and some helpful tips.

MPI will defer your MPI membership renewal payment for six months following its expiration, or until reemployment, whichever comes first.

In order to stay in the "networking" loop, the D/FW Chapter allows members to attend the next four consecutive chapter meetings at no charge. Please contact Joe Kolb in the chapter office and request the Member Transition Grant form. Once that form is on file, you are eligible to attend.

Some additional actions you can take:

- Contact the D/FW Chapter Job Bank hot line at 214/868-2908 and talk with Traci Bower (Reunion Ranch) about getting your resume on file.

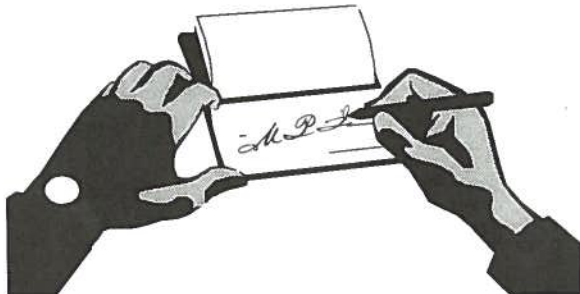
- Do you know anyone who is on the MPI Net? If so, you might have them periodically check for job listings.

- The MPI Resource Center has a special career assessment package for meeting professionals at a cost of \$30. Call (214) 712-7744 for more details.

- List your position wanted under "jobs wanted" in The Meeting Manager magazine and the Resource Center's on-line bulletin boards. For information on this contact (214) 712-7744.

Remain focused and keep a positive attitude! You'll be on the road to finding employment.

*Remember to  
Renew Your Membership!*



## INSTITUTES I, II & GRADUATE

# 1996

Three certificate programs  
for meeting management  
offering five-day, in-depth  
educational experiences

## SPRING INSTITUTES

APRIL 14-19, 1996

Peachtree Executive  
Conference Center  
Atlanta, Georgia

**REGISTER TODAY!  
SPACE IS LIMITED**

- Four Continuing Education Units (CEUs) are awarded for Institutes attendance
- For more information, call 214-712-7751

## MPI

MEETING PROFESSIONALS INTERNATIONAL  
Committed to Educational Leadership

1950 Stemmons Freeway • Suite 5018  
Dallas, TX 75207-3109 USA

INTRODUCING SOUTHFORK  
RANCH-STYLE CUISINE

*"A Taste of Elegance  
- A Touch of Texas"*

*If you thought we just offered BBQ -  
Guess again! We also  
specialize in Served Dinners  
from 10 - 1,000 and cheerfully customize!*

*This sample menu is only one of the many  
exciting new selections available for those  
wishing to host their next VIP event in a  
unique environment with an exceptional  
level of culinary excellence.*

**Crawfish Stuffed Eggplant Tortilla  
with Tomatillo Sauce**

**Sweet Potato Soup  
with Smoked Poblano Chile  
accented with Blue and Gold Tortilla Strips**

**Red Chili Encrusted Scallops & Mango  
Tortilla Salad  
served with an Orange Vinaigrette**

**Filet Mignon, Encrusted with Red Chile  
and accompanied with  
Wild Mushrooms and Ancho Sauce  
Garlic Whipped Potatoes  
Black Bean Chili  
Assorted Rolls and Butter**

**Godiva Soufflé**

*Prices range from \$23.95 to \$56.95 (++)  
depending upon menu selected.*

**CALL TODAY! SPECIAL VALUE DATES ARE  
AVAILABLE FOR SUMMER!**

**SouthFork**  
R A N C H  
EVENT & CONFERENCE CENTER

Call today  
for information!  
(214) 442-7800



## Heard it through the Grapevine!

By M.T. Gnadt  
'Grapevine' Columnist

**Sheryl Calhoun** has joined the Fort Worth CVB as national sales manager responsible for professional trade associations, state and regional. **Melanie Arguello** who was responsible for this market will now work with the Chicago and midwest market.

**Carolyn Carey, CMP**, operations coordinator, *SEI Incentives*, is a new grandmother. On August 15 her daughter gave birth to Jessica Logan.

**Mary Cowart**, owner, *Mary Cowart Meeting Consultants*, is a grandmother for the fourth time. Tanner Allen Goodwin, born October 4, is Mary's first grandson.

**Barbara Fett** has accepted the position of vice president of hard goods and temporary shows for the Dallas Market Center. She was formerly with INFOMART.

**Marti Fox, CTC**, has accepted the position of operations manager for the *BTI Americas, Inc.*, Dallas branch of Meetings & Incentives Management (formerly US Travel and IVI Corporate Meeting Management.)

**M.T. Gnadt** has earned a Masters of Science degree with an emphasis in the communication process. She plans to remain in the meetings industry, conducting training programs.

**Melanie Nussbaum, CMP**, sales manager, *Wyndam Hotel at Los Angeles Airport*, married Howard Weisenfeld on October 15 and has changed her name to Melanie Weisenfeld. Melanie was formerly with The Grand Kempinski Dallas.

**Dana Nickerson, CMP**, said *Square One Productions* has gone to the dogs by creating a new division of her company called Happy Tails. Happy Tails creates special events and fundraisers exclusively for animals and pets. A special birthday party was recently featured on Good Morning Texas with another MPI member, **Steve Kemble**, *Steve Kemble Event Design*, and his pets, Rocky & Morgan. Fun was had by all!

**Kathy Senese**, national sales manager, *Omni Hotels National Sales Office*, is a mom for the second time. Anna Carol was born November 8 to Kathy and her husband, Scott.

**Lisa South, CMP**, director of sales, *Ducky-Bob's Party Rentals* has been named in the Class of 1996 for Leadership Dallas.

Special Events magazine recently named *Yellow Rose's* "Information SuperHighway" event one of its 10 Top Events of 1995. The event was held at Informart to celebrate its 10th Anniversary.

Our sympathy to **Peter Studebaker** (Magic Tradeshow Promotions) and his family after the loss of Peter's mother.

Keep up with personal news about fellow MPI chapter members—job changes, promotions, awards or special recognitions, weddings, or births—through "Heard it through the Grapevine." Please contact Mary-Therese Gnadt (214-539-6538 • FAX 214-724-0932 • CompuServe 74161,732) about items of interest for this column.



*Out of a job?*

*Looking for a new challenge?*

*Seeking a qualified applicant to fill a position?*

*Check out D/FW MPI's Job Bank!*

To list your resume with the Job Bank, send

- a note specifying your interest (hospitality/sales, hospitality/operations, meeting planning, temporary/contract work or internships)
- a minimum of five (5) resumes per interest category
- a check or money order for \$20 (for MPI D/FW chapter members) or \$30 (for non-members) made payable to MPI D/FW Chapter

*Send these items to:*

Traci Bower  
Chair, D/FW MPI Job Bank  
P.O. Box 741208  
Dallas, TX 75374-1208

Job Bank Phone Line:  
214-868-2908

*All inquiries are confidential.*

D/FW MPI's

**JOB  
BANK**

## Job Bank Actively Assists Chapter Members with Careers

By Traci Bower  
*Reunion Ranch*

The Job Bank committee has been busy—answering questions, returning calls, sending out applications, and getting resumes into the hands of prospective employees!



*Traci Bower  
Job Bank Chair*

The Job Bank serves as a clearinghouse through which jobseekers can be matched with prospective employers. It's a good source for finding potential employees with all types of experience and skill levels. On the

flip side, the Job Bank is a great and easy way to get your resume into the hands of people needing qualified applicants for a job opening.

"The Job Bank was an excellent way to network and get my name out in the industry. It was simple and it developed

job leads without any efforts on my part. I established contacts I otherwise wouldn't have made and as a result I was hired through a Job Bank lead," said one successful applicant.

"The MPI Job Bank was a great resource to our company in seeking out qualified individuals for our job opening. It saved us time and expense. We'll definitely use the Job Bank again," said an employer with BTI Americas, Meetings & Incentives.

### What's Next For The Job Bank?

The January 17 Brown Bag Lunch educational series will focus on the "Job Bank." It will feature a panel of speakers who will discuss their jobs and describe what their positions entail and require. It will be a great opportunity for chapter members to learn more about the variety of careers within the meetings industry. Check the "Education News" pages in the *CURRENT* for details.

Remember the D/FW MPI Job Bank—you can *bank* on it!

### JOB BANK STATS

*These statistics reflect Job Bank activity since July 1, 1995.*

Active Resumes of File	46
Job Openings—Full Time	39
Resumes Sent Out	381
Job Openings—Temporary/Contract	4
# of People Hired through the Job Bank	3

The majority of positions available through the Job Bank since July 1 were in sales. About 24% were in meeting planning.

### Call for Nominations!

See 1996-97 "Request for Nominations" insert.

*Form must be returned to Diane Smith, CMP (Alcon Labs) by Monday, Jan. 15 (postmarked no later than Jan. 13).*

# Georgia Chapter Seeks Volunteers for Atlanta Paralympic Games

By Deborah Wheeler  
*Society of Petroleum Engineers*

Ticking right behind the Olympic countdown—and ticking just as loud—is the countdown to the 1996 Atlanta Paralympic Games.

The 10th Paralympic Games, the world's premier sporting event for people with physical disabilities, will be held August 15-25, 1996.

As time decreases, the volunteer commitment must increase. To this end, members of the Georgia Chapter of MPI have formed the GAMPI Paralympic Committee (GPC) to recruit MPI members as volunteers.

Word from the Atlanta Paralympics Organizing Committee (APOC) is that MPI volunteers will be assigned to manage top hospitality venues including those right inside the Paralympic Stadium for corporate sponsors, VIPs, media, and volunteers.

The Games will feature 3,500 athletes participating in venues representing these physical disabilities: blind and visually impaired people, wheelchair athletes; people with cerebral palsy; amputees, people with polio; and "les autres" (the others).

More than 12,000 volunteers are needed to stage this major event.

Volunteers must be able to commit to a five-day minimum in one of the following rotations: August 14-18, August 18-22, or August 22-26, 1996. These are the work days, so volunteers from out-of-state would most likely arrive the night before the start date.

GPC is investigating the availability of comp or discounted hotel rooms. GPC is also working on a buddy system to pair up visiting volunteers with local Georgia Chapter members.

Volunteer interest forms will be available at the December Chapter Meeting; updates on availability of hotel rooms will follow.

Volunteers must be confirmed by December 31. Those interested should contact Deborah Wheeler (Society of Petroleum Engineers) at 214/952-9311 for further information.

Don't miss this once-in-a-lifetime opportunity to participate in an event of this magnitude—to visit Olympic and Paralympic venues first-hand; to promote the valuable resources available through the members of MPI; and to make a difference in lives—especially your own.

## Opinion, Please!

**Q: As a former or present president of the D/FW Chapter of MPI, what is your wish for the New Year?**



**Phyllis Firebaugh, CMP**  
**Krisam Group • supplier**

A: "That our members will stay enthusiastic and involved after the PEC for the exciting new programs we've planned for '96 in our continuing 'Commitment to Excellence.'"



**Diane Smith, CMP**  
**Alcon Labs, Inc. • planner**

A: "My heart's desire is for the PO<sup>4</sup>Ds to prosper and provide our entire membership with additional educational opportunities and personal growth."



**Lesley Meyer, CMP**  
**Sunbelt Motivation & Travel, Inc.**  
**• planner**

A: "My wish for 1996 is that we continue to strengthen our bonds with our Italian counterparts and that we have a very successful Gemelli seminar in October."



**Mary Cowart**  
**Mary Cowart Meeting Associates**  
**• planner**

A: "My wish for the New Year is that 1996 will be the most successful year ever. This can happen with each member utilizing other MPI member services."

*"Opinion, Please" is a question and answer feature column prepared by Kristi Hollomon (J&S Audio Visual, Inc.), advertising director for the CURRENT.*

## COMMUNITY SERVICE



### The Kids Charity Ball

*Announcing ...*

### The Kids Charity Ball Drawing

## SIX NIGHTS IN ITALY

Compliments of  
ITT SHERATON HOTEL'S LUXURY COLLECTION  
and  
DELTA AIR LINES

- Three nights at the *HOTEL EXCELSIOR* in Rome ..  
*one of the world's great classic hotels just moments from the Spanish Steps!*
- Three nights at the *HOTEL EXCELSIOR* in Florence ...  
*a former palace only steps from some of the world's greatest cultural treasures!*
- Round trip coach air for two from Dallas to Rome on  
Delta Air Lines!



*Remember Father Vito's words ...  
It's a steal at only \$5.00 a ticket!*

Look for your chance to buy the winning ticket at the next Chapter meeting!  
The drawing will be held at The Kids Charity Ball 1996 on March 30, 1996.  
Winner need not be present to win.

### **BEARS IN FLIGHT**

The 1996 Celebrity Bears are on their way to Dallas! Thanks to the generosity of Knickerbocker/Annette Funicello and the American Airlines Training and Conference Center, The Kids Charity Ball 1996 will feature the second edition of the Celebrity Bears!

The Celebrity Bear Committee is looking for help in securing celebrity autographs for the red cummerbunds and designers to "dress" the bears.

Please call Pat Burgher (Travel Resources - Sterling Hotels & Resorts) at 214-402-4858 to volunteer!

### **NEED A LAST MINUTE GIFT?**

Give a gift that could create the memories of a lifetime ... a chance to win a trip to Italy!

Perfect for stocking stuffers, office gifts or as Christmas card inserts!

### **THE KIDS CHARITY BALL DRAWING TICKETS**

To purchase tickets, simply call:

Jan Pollard (Omni Hotels) at 214-444-0044  
O.D. O'Donnell (Nightlife Talent) at 214-691-4417  
Esther Wigley (Appointments) at 214-788-1702

Proceeds benefit the kids of GIVE KIDS THE WORLD, LOVE FOR KIDS, TRINITY MINISTRY TO THE POOR and NORTH TEXAS FOOD BANK.

The Kids Charity Ball would like to thank our Corporate Sponsors as of 11/15/95 ...

### **PLATINUM SPONSOR - \$5,000**

Addison Conference & Theatre Centre

To learn more about Corporate Sponsorship opportunities, please call: Stephanie Davis (ITT Sheraton) at 214-980-4934  
Steven Foster (Grayline) at 214-630-1000

*The Kids Charity Ball is a gala evening sponsored by the D/FW Chapter of MPI and benefits underprivileged and terminally ill children. For additional information, contact Patti Wilke, CMP at 214-361-7789.*

## Executive Board



**MPI D/FW CHAPTER  
President**  
**Phyllis Firebaugh, CMP**  
*Krisam Hotels & Resorts*  
214-458-8692  
FAX 214-458-8701

# MPI

MEETING PROFESSIONALS INTERNATIONAL®

## 1995-96 Dallas/Fort Worth Chapter Officers and Directors



**President-Elect**  
**Mary Lynn Novelli**  
*Sterling Hotels & Resorts*  
214-402-4875  
FAX 214-402-4889



**Immediate Past President**  
**Diane Smith, CMP**  
*Alcon Laboratories, Inc.*  
817-551-8077  
FAX 817-551-4696



**Vice President/Administration**  
**Linda Sergeant**  
*Bill Reed Decorations, Inc.*  
214-823-3154  
FAX 214-823-3191



**Vice President/Education**  
**Greg Pynes**  
*Town of Addison*  
214-450-6202  
FAX 214-458-8892



**Vice President/Finance**  
**Charlotte Merrill-Davis**  
*Event Source Professionals*  
817-267-6698  
FAX 817-571-7858



**Vice President/Membership**  
**Sally Goldesberry, CMP**  
*Meetings & Exhibit Specialists*  
Phone & FAX  
214-407-0755



**Vice President/Programs**  
**Michelle Carter**  
*Southfork Event & Conference Center*  
214-442-7800 x281  
FAX 214-442-5259



**Vice President/Public Relations**  
**Dana Nickerson, CMP**  
*Square One Productions*  
214-343-8067  
FAX 214-343-6166

## Board of Directors • Planner Members



**Susie Carr, CMP**  
*Annuity Board of the SBC*  
214-720-0511  
FAX 214-720-4792



**Sherri Cook, CMP**  
*Sherri Cook & Associates*  
214-732-9396  
FAX 214-732-9398



**Tracey Smith**  
*Computer Language Research, Inc.*  
214-250-7404  
FAX 214-250-7859



**Deborah Wheeler**  
*Society of Petroleum Engineers*  
214-952-9311  
FAX 214-952-9435

## Board of Directors • Supplier Members



**Traci Bower**  
*Reunion Ranch*  
214-271-2666  
FAX 214-278-9391



**Gail Lemaire**  
*The Adolphus Hotel*  
214-742-8200  
FAX 214-651-3563



**Jan Pollard**  
*Omni Hotels National Sales Office*  
214-444-0044  
FAX 214-444-8822



**Kathi Thompson**  
*The Inn on the River*  
214-424-7119  
FAX 214-424-9766

# MPI

MEETING PROFESSIONALS INTERNATIONAL®

# CURRENT

## Get Your Message Before Key Meeting Professionals in D/FW!

Want to reach almost 700 meeting professionals in the Dallas/Fort Worth area and beyond—monthly!—and increase your company's recognition among professionals throughout the meetings industry?

Then you should advertise in the **CURRENT**, the newsletter that chronicles the activities of the Dallas/Fort Worth Chapter of Meeting

Professionals International!

A sponsorship advertisement—a full page on a yearly contract—will bring your company a full-page ad on the inside back cover, plus prominent visibility on the front page!

People remember what they see and read. Don't miss this opportunity to showcase your business or service through the **CURRENT**!

The **CURRENT** is the primary information resource for members of the D/FW Chapter of MPI.

- **published monthly**
- **issued mid-month**
- *closing date: 15th of the month prior to the issue in which the ad will appear*
- *rates are for camera-ready copy*
- *payment in full & camera-ready artwork are due with the advertising contract*

### CURRENT Advertising Rates

SIZE	PER ISSUE	YEARLY RATE	MEASUREMENTS
Full Page	\$500	\$250	7 1/2" x 9 9/16"
Two-Thirds Pg. Hor.	\$400	\$200	7 1/2" x 6"
Two-Thirds Vert.	\$400	\$200	5" x 9 9/16"
Half Page Hor.	\$300	\$150	7 1/2" x 4 1/2"
Half Page Vert.	\$300	\$150	3 3/4" x 9 1/4"
Quarter Page Hor.	\$150	\$ 75	3 3/4" x 4 1/2"
Quarter Page Vert.	\$150	\$ 75	7 1/2" x 2 1/4"
Business Card Hor.	\$100	\$ 50	3 1/2" x 2"
Business Card Vert.	\$100	\$ 50	2" x 3 1/2"

**CURRENT** is published monthly, 12 months annually, by the Dallas/Fort Worth chapter of Meeting Professionals International. **CURRENT**, the primary information source for members of the D/FW Chapter of MPI, is circulated among almost 700 individuals and companies interested in the field of meeting planning.

Rates are based on camera-ready copy. Special rates are available for advertisers who contract space three and six times per year.

Mail or deliver camera-ready copy to **CURRENT** editor, Gracie Hatfield Hilton • 3020 Glasgow Court • Arlington, TX 76015.

To place ads: Contact **CURRENT** advertising chair

**Kristi Hollomon**

J&S Audio Visual, Inc. • 3373 Towerwood Drive  
Dallas, TX 75234-2316

214-241-5444 • FAX 214-247-2590

FULL  
PAGE

business  
card—  
vertical or  
horizontal

2/3  
page  
horizontal

2/3  
page  
vert.

1/2  
page  
horizontal

1/2 page  
vertical

1/4  
page  
horizontal

1/4  
page  
vertical

# MPI

MEETING PROFESSIONALS INTERNATIONAL®

Dallas/Fort Worth Chapter  
4020 McEwen • Suite 105  
Dallas Texas 75244



## DALLAS/FORT WORTH CHAPTER

# MPI

MEETING PROFESSIONALS INTERNATIONAL®

Meeting Professionals International is the world's largest association of meetings professionals with more than 13,200 members in 44 countries and 54 chapters and one club. MPI's mission is to provide educational opportunities and recognition for those in the meetings industry. The association is committed to excellence in meetings, continuous international growth, research, a strong chapter network and high ethical standards.

**MPI International Headquarters**  
INFOMART  
1950 Stemmons  
Suite 5018  
Dallas, Texas 75207-3109  
214-712-7700

**MPI**  
**Dallas/Fort Worth Chapter**  
4020 McEwen • Suite 105  
Dallas Texas 75244  
214-774-1404  
FAX 214-490-4219  
E-Mail: 74742.1725 (Compuserve)  
or  
INTERNET:74742.1725@compuserve.com

### Officers

#### President

Phyllis Firebaugh, CMP  
*Krisam Hotels & Resorts*  
214-458-8692

#### President-Elect

Mary Lynn Novelli  
*Sterling Hotels & Resorts*  
214-402-4875

#### Immediate Past President

Diane Smith, CMP  
*Alcon Laboratories, Inc.*  
817-551-8077

#### Vice President/Administration

Linda Sergeant  
*Bill Reed Decorations, Inc.*  
214-823-3154

#### Vice President/Education

Greg Pynes  
*Town of Addison*  
214-450-6202

#### Vice President/Finance

Charlotte Merrill-Davis  
*Event Source Professionals*  
817-267-6698

#### Vice President/Membership

Sally Goldesberry, CMP  
*Meetings & Exhibit Specialists*  
214-407-0755

#### Vice President/Programs

Michelle Carter  
*Southfork Event & Conference Center*  
214-442-7800 x281

#### Vice President/Public Relations

Dana Nickerson, CMP  
*Square One Productions*  
214-343-8067

### Board of Directors

#### Planners

Susie Carr, CMP  
*Annuity Board of the SBC*  
214-720-0511

Sherri Cook, CMP  
*Sherri Cook & Associates*  
214-732-9396

Tracey Smith  
*Computer Language Research, Inc.*  
214-250-7404

Deborah Wheeler  
*Society of Petroleum Engineers*  
214-952-9311

#### Suppliers

Traci Bower  
*Reunion Ranch*  
214-271-2666

Gail Lemaire  
*The Adolphus Hotel*  
214-742-8200

Jan Pollard  
*Omni Hotels National Sales Office*  
214-444-0044

Kathi Thompson  
*The Inn on the River*  
214-424-7119

### CURRENT Staff

#### Editor

Gracie Hatfield Hilton  
*The Write Stuff*  
Ph. & FAX 817-467-7439

#### Advertising Director

Kristi Hollomon  
*J&S Audio Visual, Inc.*  
214-241-5444



# MPI

MEETING PROFESSIONALS INTERNATIONAL®

*Committed to Educational Leadership*

## D/FW CHAPTER OF MPI MENTOR PROGRAM MENTEE VOLUNTEER

I want to participate in the Mentor Program as a Mentee.

Name \_\_\_\_\_ Nick-name \_\_\_\_\_

Company \_\_\_\_\_

Address/Suite \_\_\_\_\_

City/State/Zip \_\_\_\_\_

Daytime Phone \_\_\_\_\_ Evening Phone \_\_\_\_\_

What professional distinctions, certifications, or awards have you attained?

\_\_\_\_\_

Tenure in current position \_\_\_\_\_ Tenure in this industry \_\_\_\_\_

What are your current responsibilities? \_\_\_\_\_

\_\_\_\_\_

What's your career background - how did you get involved in the meeting industry?

\_\_\_\_\_

What was your biggest challenge in this industry? \_\_\_\_\_

\_\_\_\_\_

Where do you want to be in your career 3 years from now? \_\_\_\_\_

\_\_\_\_\_

(continued on back)

What are you most proud of in your career? \_\_\_\_\_

\_\_\_\_\_

What are you most proud of in your personal life? \_\_\_\_\_

\_\_\_\_\_

What are some of your personal interests and/or hobbies? \_\_\_\_\_

\_\_\_\_\_

What else would you like us to know about your professional life and expectations?

\_\_\_\_\_

Do you have a Mentor preference? Name: \_\_\_\_\_

If no, do you have any specific requests of an assigned Mentor? \_\_\_\_\_

\_\_\_\_\_

\_\_\_\_\_  
Signature

\_\_\_\_\_  
Date

To be included in our "inaugural" Mentor Program, please mail this no later than  
January 15, 1996 to: Fred H. Knieberg, CMP  
7509 Woodthrush  
Dallas, TX 75230  
Telephone: (214) 361-4316

<b>For Panel use only:</b>	Date reviewed: _____
Assigned by: 1. _____	
2. _____	
3. _____	
Recommended Mentee/Mentor match: _____	
Panel Comments: _____	
_____	
_____	