

CURRENT

Meeting Professionals International

July 1995

Dallas-Fort Worth Chapter

President's Message

Excellence: the Exceptional Drive to Exceed Expectations

By Phyllis Firebaugh, CMP
Krisam Group

Excellence is the exceptional drive to exceed expectations! Considering the D/FW Chapter's proud heritage—and the exciting year before us—no other standard will do.

Bringing a fresh burst of energy and ideas are the eight new members of the 1994-95 Board of Directors. All 17 of us are enthusiastic about leading with a *Commitment to Excellence!*



Phyllis Firebaugh, CMP
D/FW Chapter President

So many exciting projects are upcoming! Dallas will host the International Professional Education Conference in December in a "never-to-be-forgotten" style. We'll host our sister chapter, Gemelli, for a familiarization trip

to the D/FW area—and what a dynamic precedent they set when our chapter visited Italy last spring!

We'll also focus our *Commitment to Excellence* on MPINet, the Certified Meeting Professional program, the Job Bank, a mentoring program, improved membership benefits, plus innovative educational opportunities—for which CEUs are now available!

And—the PO⁴Ds are coming! Born in last year's
(continued on page 16)

MPI

MEETING PROFESSIONALS INTERNATIONAL®

July D/FW Chapter Meeting

Seeds of Success— MPI's Natural Resources

featuring

Hattie Hill-Storks

Thursday, July 27

Doubletree at Lincoln Centre

5410 LBJ Freeway @ Lincoln Centre
Dallas, Texas 75240
214-934-8400

Complimentary parking in hotel garage. Valet Parking \$5

Orientation 5:30 p.m.

Trade Show & Registration 6:00 p.m.

Dinner & Program 7:00 p.m.

R.S.V.P. to Sandi
by noon,
Tuesday, July 25
214-343-0555

Advance Registration \$26
Late Registration \$35
Guest Registration \$30

See page 3 for more details and meeting reservation policy.

INSIDE

July Meeting Info

3

Last Month's Meeting

10

Opinion, Please

4

Membership News

14

Surfin' the MPINet

5

Convention Highlights

17

Education News

8

A Member's Perspective

18

CURRENT

MPI

MEETING PROFESSIONALS INTERNATIONAL®

Dallas/Fort Worth Chapter

Newsletter Staff

Editor

Gracie Hatfield Hilton
The Write Stuff
Phone & FAX
metro 817-467-7439

Vice President/Public Relations

Dana Nickerson, CMP
Square One Productions
214-343-8067
FAX: 214-343-6166

Advertising Chair

Stephanie Davis
Sheraton Park Central Hotel
Phone: 214-851-2016
FAX: 214-991-4557

Photographer

Mark Lazarow
Mark Lazarow Photography
214-380-0985
FAX: 214-380-1431

MISSION STATEMENT

MEETING PROFESSIONALS INTERNATIONAL

Meeting Professionals International is the pivotal force in positioning meetings as a primary communication vehicle and a critical component of an organization's success. Meeting Professionals International leads the meetings industry by serving the diverse needs of all people with a direct interest in the outcome of meetings, educating and preparing members for both their changing roles and validating relevant knowledge and skills, as well as demonstrating a commitment to excellence in meetings.

The *CURRENT* is published 12 times yearly for the D/FW Chapter of Meeting Professionals International, the industry's leading educational and networking resource in meetings management. Statements of fact and opinion are the responsibility of individual writers and do not imply collective opinion of the officers or members of MPI.

Upcoming MPI Events

CHAPTER MEETINGS

July 27, Thursday
Chapter Meeting
Doubletree Lincoln Center
"Natural Resources"
6:30 p.m./Dinner

August 24, Thursday
Chapter Meeting
Dallas Convention Center
"The ABCs of 1995 PEC"
11:30 a.m./Lunch

September 28, Thursday
Chapter Meeting
INFOMART
"Meeting Technology"
11:30 a.m./Lunch

October 26, Thursday
Chapter Meeting

November 16, Thursday
Chapter Meeting

December 21, Thursday
Chapter Meeting
Holiday Party

1996

January 25, Thursday
Chapter Meeting

February 29, Thursday
Chapter Meeting

March 28, Thursday
Chapter Meeting

April 25, Thursday
Chapter Meeting

May 23, Thursday
Chapter Meeting
Annual Awards Banquet

June 27, Thursday
Chapter Meeting

EDUCATIONAL OPPORTUNITIES

December 10-12
'95 Professional Education
Conference/North America
Dallas

July 28-30, 1996
'96 World Education Congress
Nashville, TN

January 12-14, 1997
'97 Professional Education
Conference/North America
San Francisco

July 27-29, 1997
'97 World Education Congress
Baltimore

NOTE: Chapter meeting plans are subject to change. Check the CURRENT each month to confirm details. For more information about association events, call MPI Headquarters, 214-712-7700.

Upcoming Events • Related Organizations

NACE
August 2
Sammons Center
program TBA
6 p.m./Dinner

HSMAI
August 10
Addison Conference Center
"Managing Diversity"
11:30 a.m./Lunch

IAEM
August 24
INFOMART
"Computer Technology"
11 a.m./Lunch

July Meeting Highlights

'Seeds of Success' Means Involvement; Hill-Storks to Discuss MPI's Natural Resources

By Marilyn Manby
Event Source Professionals &
Betty E. Garrett, CMP
Garrett Speakers International

Hattie Hill-Storks—known for upbeat, thought-provoking and entertaining presentations—will discuss "Seeds of Success" at the July 27 dinner meeting at Doubletree @ Lincoln Centre.

"MPI's Natural Resources," an annual program for the D/FW Chapter of MPI, focuses on opportunities for involvement in chapter programs and activities.



Hattie Hill-Storks
International Productivity
Institute, Inc.

Featured speaker Hill-Storks, International Productivity Institute, Inc., has trained thousands of professionals, including many from the ranks of MPI. A member of the D/FW Chapter, she

has been actively involved with MPI at the international level—frequently called on to make presentations at annual conventions, professional education conferences and institutes.

Implementing a unique blend of counseling and psychology in her training technique—she holds a bachelor's degree in

education and a master's degree in counseling—Hill-Storks' customized training focuses on self-mastery skills, teambuilding, leadership, diversity and customer service.

An active member of numerous speakers' organizations, including National Speakers Association, her audience has included organizations such as AT&T, Kodak, Xerox, and Exxon.

Hill-Storks consults with organizations on quality and productivity issues facing the multinational, multicultural workplace. She was profiled by the *Wall Street Journal* for expertise in diversity training. The *Dallas Business Journal* named her an "upcoming rising star" for contributions to the business world and community.

Her focus at the July meeting will be involvement in ideas and concepts—the seeds needed for organizational growth.

"Once planted, these 'seeds' begin to

develop into a strong root system which are MPI's Natural Resources," said program chair Marilyn Manby (Event Source Professionals, Inc.).

"Just as a tree grows, our chapter branches out to offer numerous programs for educational and personal development," she said. "Input from our membership is vital to the growth of MPI's 'Tree of Knowledge.'"

Prior to the program, each vice president will have a tabletop exhibit featuring information about various committees. Sign up sheets will be available at each area of service opportunity.

Other committee members for the July meeting are: Betty E. Garrett, CMP (Garrett Speakers International), Cathy Mason (USTravel Incentives) and Gail Lemaire (Adolphus Hotel). Facility hosts at the Doubletree Hotel at Lincoln Center include Michael Gongre and Kevin Gilbert.

July Host Facility

Doubletree @ Lincoln Centre

Situated in North Dallas, just 20 minutes from the Dallas/Ft. Worth International Airport and right across from the renowned Galleria, the Doubletree Hotel at Lincoln Centre pampers its guests with the finest of Texas hospitality.

Doubletree's shimmering high-rise offers 500 beautifully-appointed guest rooms featuring comfortable seating and spacious work areas. Sixteen exquisite suites are perfect for entertaining guests or holding impromptu meetings. For additional privacy and service, four Executive levels offer a full-service Business Center as well as an exclusive Executive Club Lounge.

Guests enjoy complimentary hors d'oeuvres at the upbeat Cricketer's or while relaxing to piano music in Basie's Lobby Lounge. Crockett's American Grill features Southwestern specialties while lighter fare is available at the atrium-style Centre Cafe.

Amenities include a luxurious pool deck and jogging paths around a landscaped lake. For a nominal fee, guests may enjoy fitness privileges at the exclusive Lincoln City Club adjacent to the hotel.

Shoppers appreciate the Doubletree's complimentary shuttle service to the Galleria shopping mall.

Doubletree's 25,000 square feet of flexible meeting space makes it an ideal location for conferences, banquets and seminars.

Every stay begins with Doubletree's welcoming chocolate chip cookies—part of the service and personal attention that make Doubletree famous.

Directions: Take Dallas Parkway exit off 635. The Doubletree is across from the Galleria on the southeast corner of LBJ and Dallas Parkway.

Complimentary parking is available in the hotel garage. Valet parking is \$5.

D/FW Chapter Meeting Reservation & Attendance Policy

Registration fees will be collected at the door; advance payments are not accepted. If paying by check, please have check completed before approaching registration table. Reservations must be made by RSVP deadline for advance registration fee to apply. Late reservations and walk-ins will be accepted on a SPACE AVAILABLE basis. Cancellations must be made by the RSVP deadline. **No-shows will be billed.** Members are responsible for "no-show" charges for their guests. Guests are limited to attending three meetings per year (spouses are an exception).

Editor's Notes

CURRENTly . . .

It is difficult—impossible, actually!—to catalog every detail of all the involvements and projects of an organization as active as the D/FW Chapter of MPI!

A monthly challenge in editing the *CURRENT* is to hit the high points with clarity and brevity—to chronicle significant activities *concisely*.

Your editor is of the Strunk & White (*The Elements of Style*) and Zinsser (*On Writing Well*) "schools of thought" on writing—vigorous writing is concise. The best writing has been stripped to its cleanest components—no extraneous, needless words.



Gracie H. Hilton
The Write Stuff
CURRENT Editor

William Zinsser, one of my favorite writers on writing, says, "Clutter is the disease of American writing."

William Strunk and E.B. White, two more icons among those who write on writing, say it simply: "Omit needless words."

Remove the deadwood, bloated verbiage, verbose phrases and doublespeak. Replace with common, short words and sentences—and comprehension soars!

Less is more!

Newsletter writing, especially, requires a brisk, informal style. Paragraphs should be short—no more than two or three sentences. And every sentence should be packed with meaning.

A new administrative year lies ahead. We see new faces in leadership positions—and welcome a new group of newsletter contributors.

My family teases me about the "red pen" I keep "holstered and ready to fire" at all times. Actually, I was born with a rewriting/editing gene in my DNA. ☺

Please bear with me when I draw that red pen and edit your copy. I promise to leave the major ideas intact in the act of putting "air" (white space) around the words, making them inviting to read.

Tight writing makes a point. Concision delivers information with impact.

Do you find it difficult to throw words away? Not to worry! That's what editors are for!

—ghh ☺

Opinion, Please!

Q: Do you have any requests or expectations of our 1994-95 Board of Directors?



Linda Vest
State Farm Insurance Companies

• planner

A: "My request is that the Board of Directors develop more credited continuing education programs that set the professional standards of the meeting professional."



Sherry Richardson
Taco Bell Corp. • supplier

A: "I 'd like to see a program for localized networking. I work and live a distance from Dallas and am usually not able to make any of the committee meetings . . . Perhaps we could create "geographical groups" to meet monthly to discuss issues, programs, etc."



Maurine Allen, CMP
Sunbelt Motivation & Travel, Inc.

• planner

A: "My only request is that the Board and membership continue to enthusiastically support the positive goals and team spirit as set forth by our previous leadership."



Ginny Paxton
• supplier

A: "More exhibition opportunities—such as the Lone Star Link Up—to improve supplier retention. (We can't supply each other effective leads until we understand our businesses better.)"

"Opinion, Please" is a question and answer feature column prepared by Mary Lynn Novelli (Sterling Hotels & Resorts), vice president of public relations.



Linda Sergeant

Surfin' the MPINet Highway

By Linda Sergeant (Bill Reed Decorations)

This column explores MPINet, the first global online communications system designed specifically for the meetings industry.



How does the message system work?

There are 14 **PUBLIC Message Board Sections**, but the best way to find out what each area covers is to "lurk." Lurking is listening in without commentary. You will find it difficult to lurk for very long as you will get drawn into the discussions sooner or later!

Remember, all messages left on a one of these boards are **PUBLIC**—meaning anyone can read them. It is as easy to "post" a new message as it is to "reply" to an existing message. Once a dialogue is initiated, it is called a "thread."

Section 1: Welcome to MPINet— where "newbies" introduce themselves.

Section 2: Professional Issues—where general professional issues in our industry are discussed.

Section 3: Meeting Manager Magazine—where the editors and staff solicit contributions to the magazine.

Section 4: Speakers/Education—For RFPs (request for proposals) for speakers and education.

Section 5: Meeting Operations —For RFPs and questions regarding registration, budgeting, vendor negotiations, food and beverage, insurance, site logistics, ground, exhibits, and special events.

Section 6: Locales/Facilities—For RFPs and questions regarding destinations, hotels, conference centers, conventions, and resorts.

Section 7: Technology —For questions and announcements about the latest electronic technology.

Section 8: Government/Legal Issues—For discussion of legal issues and industry lobbying efforts.

Section 9: Meetings in Europe—For RFPs and information on European sites and meetings.

Section 10: Meetings in Canada—For RFPs and information on Canadian sites and meetings.

Section 11: Industry Meetings—For announcements and information on MPI meetings.

Section 12: Business Exchange—The only area on the public message boards where business solicitations may be posted. A place to offer and seek services.

Section 13: MPINet Committees—For communication between MPINet users and the Forum's Committees.

Section 14: Bit & Bytes—For all informal chit-chat and casual conversation. The cyber social hour!



How do I send a private e-mail message?

It is easy to send a private message to someone. An address book is included in your software which makes it easy for you to compile names and cyberaddresses. When you connect to Cserve—but before signing on to MPINet—click on "Messages" on the toolbar, then click on "Create Message." If you would like to save a message for revision before actually sending, then put it in

your "out basket." When you do send this message, it is a private one, going only to the address you selected. If you are using WinCim, when you sign on to Cserve and a private e-mail message is waiting, you will be alerted by the appearance of a little mailbox icon at the top of your screen, as well as the announcement: "you have messages waiting."



Are these messages saved somewhere?

Yes. There is a "file cabinet" included in your software. You can create your own files for saving messages sent to you, or messages of interest off the public boards. The messages you send are automatically saved. You can print a hard copy of any message at anytime.



How do I "chat" with someone in real time?

WinCim for MPINet has a set of icons for facilitating communication. One will produce a "pop-up" screen that shows who is currently online. You may invite any or all of them to chat! When you do, the invitee sees an onscreen announcement — actually an invitation for an "online conference." Then it is just like talking on the phone, except the participants are typing messages to each other instead of speaking.



Who among the D/FW Chapter membership may I contact through MPINet?

Welcome to new MPINetters **Sal Sessa** (Sal Sessa Events Photography) and **Virginia Paxton** (Ginny's Gifts).

As this issue of CURRENT goes to press, D/FW Chapter members among MPINet subscribers include: **Ellen Beckert** (Freeman Decorating), **Judy Benaroch**, **CMP** (Sunbelt Motivation & Travel, Inc.), **Bill Boyd**, **CMP** (Sunbelt Motivation & Travel, Inc.) **Inga Bowyer** (ROI Meetings and Events Inc.), **Greg Elam** (Dallas CVB), **Jim Follett**, **CHSE** (InterContinental and Forum Hotels), **Betty Garrett** (Garrett Speakers International), **Sally Goldesberry**, **CMP** (Meetings & Exhibits Specialists), **Hattie Hill-Storks** (International Productivity Institute Inc.) **Gracie Hilton** (The Write Stuff), **Pat McCain**, **CMP** (Krisam Group), **Debbie Meyers** (Bravo! Entertainment), **Jim Monroe** (Gale Sliger Productions), **Virginia Paxton** (Ginny's Gifts) **Greg Pynes** (Town of Addison), **Linda Sergeant** (Bill Reed Decorations), **Sal Sessa** (Sal Sessa Events Photography), and **Bob Walker** (AVW).

Do you have questions you would like to see answered in this column? Please contact Linda Sergeant (Bill Reed Decorations, Inc.), 333 First Ave. Dallas, TX, 75226; FAX: 214-823-3191; CompuServe address: 74117,705.

Texas, Regional Specialties Sought; Deadline is August 31

MPI Cookbook to be Gift for PEC Attendees, Foundation Fundraiser

The D/FW Chapter of MPI is cooking up a cookbook, and we need your help!

Planned is a volume featuring Texas or regional specialties—and looking for a certain recipe in your collection—the one that has that “something extra.” It may be the dish your family always requests, or the one you pull out for special guests.



Mary Lynn Novelli
President-Elect

It may be its ease of preparation or the beauty of its presentation that makes it special. We want the recipe that always gets rave reviews, whether it’s “tried and true” or original and new.

PEC Gift Now, Fundraiser Later

The cookbook will roll off the presses just in time for the PEC Conference/Dallas in December—and will be a special gift for all PEC attendees. Later, the cookbook will be sold to our chapter membership as the 1995-96 MPI Foundation Fundraiser.

Recipes will be organized by these categories: •Soups/Salads; •Appetizers; •Entrees (Meats, Fish, Chicken, Casseroles); and •Dessert/Beverages.

As you consider your collection of regional favorites, consider “country cooking,” “Southern cooking,” barbecue, Mexican or “Tex-Mex;” or “ethnic with a regional twist.”

Please include ingredients (in order of use), preparation instructions (including cooking time and temperature), and comments about the recipe—

such as its “history” — how did you come across this regional specialty? Can you suggest appropriate accompaniment dishes?

President-Elect Mary Lynn Novelli (Sterling Hotels & Resorts) is chair of the cookbook committee. Co-chair is Lesley Meyer, CMP (Sunbelt Motivation & Travel, Inc.). The committee met early this month, and seeks more members.

Volunteers Needed!

Volunteers are needed to help coordinate the cookbook and secure bids from printers, Novelli said. Please call her at 214-402-4875 to volunteer your services.

Please mail your recipe submission (typed, please!), or your diskette (saved in WordPerfect) to: Mary Lynn Novelli, Sterling Hotels & Resorts, 5201 North O’Connor Blvd., Suite 500, Irving, Texas 75039. Or, you can FAX it to 214-402-4889.

The deadline for submitting recipes is August 31.



Heard it through the Grapevine!

By M.T. Gnad
‘Grapevine’ Columnist

Don DeFeo, director, regional sales, *Medallion Hotels, Inc.* was named one of the top 25 influential people in the meetings industry by *Meeting News* magazine. The recognition comes as a result of Don’s efforts in starting the Stargate Foundation, an alcohol and drug awareness program for the meeting industry.

Steve Kemble, *Steve Kemble Event Design*, was named by the Dallas chapter of the National Association of Catering Executives (NACE) as its nominee for National Affiliate of the Year.

Mary Ellen Malsbury, president and partner, *WorldTravel Partners*, and her husband, George, are expecting their first child. The new arrival is expected around the middle of December.

Lisa South, CMP, director of sales, *Ducky Bob’s Party Rentals*, has been appointed to the Special Events Interest Group Advisory Board for the American Rental Association, a professional organization for rental companies of all types.

Cindy Webber, senior sales manager, *Stouffer Renaissance*, will marry **Dick Martinez**, *Dallas CVB*, in October.

How appropriate! The **Texas Wine Growers Association** will relocate its state headquarters to Grapevine, Texas.

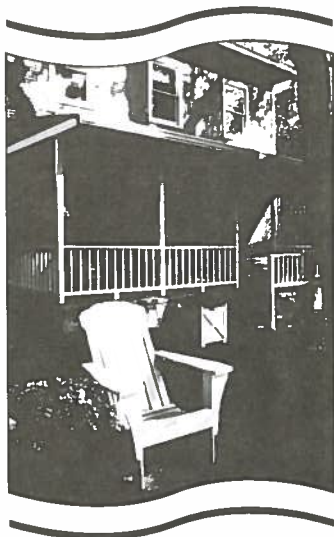
Bauer Audio Visual’s several D/FW Chapter members report the company’s new A-V services partnership with *Red Lion Hotels and Inns*.

Keep up with personal news about fellow MPI chapter members—job changes, promotions, awards or special recognitions, weddings, or births—through “Heard it through the Grapevine.” Please contact *Mary-Therese Gnad* (214-539-6538 • or FAX 214-724-0932) about items of interest for this column.



Trinity Ministry to the Poor Weekend Project

Nine members of the D/FW Chapter of MPI recently participated in a weekend "clean up, paint up, fix up" project benefiting Trinity Ministry to the Poor. Pictured are Diane Smith, CMP (Alcon Labs); Kristi Holoman (J&S Audio Visual); Jamie Schroeder ITT Sheraton); Stephanie Davis (Sheraton Park Central Hotel); Susie Carr, CMP Annuity Board of the SBC; Mary Lynn Novelli (Sterling Hotels and Resorts); Patti Wilke, CMP; Linda Sergeant (Bill Reed Decorations, Inc.); and Steve Kemble (Steve Kemble Event Design).



INN ON THE RIVER

The "Inn" Way To A Successful Retreat.

Nestled in the trees along the bank of the Paluxy River, the historic Inn On the River has perfected the art of the executive retreat. The relaxing atmosphere allows you to promote comradere while simultaneously meeting your objectives.

- State-of-the-Art Conference Center
- Audio and Video Equipment
- Electronically-Controlled Screen
- Fax Machine, Conference Phone, Copier
- 22 Rooms
- Gourmet Meals
- Tranquil and Creative Haven

For meeting information and brochures, contact Kathi Thompson at 214-424-7119
205 S.W. Barnard St. • Glen Rose, Tx. 76043 • 817-897-2101 • Fax 817-897-7729



Out of a job?

*Looking for a
new challenge?*

*Seeking a qualified
applicant to fill a
position?*

*Check out
D/FW MPI's
Job Bank!*

To list your resume
with the Job Bank, send

- a minimum of five (5) resumes
(more if you wish)
- a check or money order for
\$15 (for MPI D/FW chapter
members) or \$25 (for non-
members) made payable to
MPI D/FW Chapter
- a note specifying the type of
position that interests you

Send these items to:
Gretchen Parr-Silver
Chair, D/FW MPI Job Bank
2012 Van Buren Drive
Arlington, TX 76011

All inquiries are confidential.

**D/FW MPI's
JOB
BANK**

'Walk a Mile in my Shoes' Recap 23 Participate in Inaugural Educational Partnership Program

By Colleen Albert Rickenbacher, CMP
Dallas Conv. & Visitors Bureau

Twenty-three students participated in "Walk a Mile in My Shoes"—the first-ever MPI educational working partnership program. The program's popularity and success ensures a repeat course.

During this limited enrollment course—a joint project with Richland College—registrants "walked in the shoes" of other meeting professionals in the Dallas/Fort Worth area.

The late spring class met weekly on Tuesday evenings, with one daytime event on a Saturday, for a total of 22 hours.

"Walk a Mile in My Shoes" Instructors

American Heart Association

- Leigh Ann Rawls
- Lucinda Nichols

Dallas Market Center

- Paula Mize
- Carole Mitchell

Freeman Decorating

- David Gisler

AWW Audio Visual, Inc.

- John Ures

Yellow Rose Touring & Special Events

- Dorrit Turner & Staff

Southwest Airlines

- Heidi Schuette & Team

Wyndham Anatole Hotel

- Michael Darst, CMP

Taste Addison

- Greg Pynes

Richland College

- Carolyn MacPhee

Dallas Convention & Visitors Bureau

- Colleen Albert Rickenbacher, CMP
- Tamara Quilty
- Dena Carr
- Kristine Klasen

Each class took place at a different venue to provide a wide variety of experiences. Meeting places included the American Heart Association, Dallas Convention & Visitors Bureau, Freeman Companies, Yellow Rose Touring Company, Southwest Airlines, Wyndham Anatole Hotel, Dallas Market Center and Addison Convention Center. The final presentation took place at Richland College.

Under the direction of V.P./Education Charlotte Merrill-Davis (Event Source Professionals), Colleen Albert Rickenbacher, CMP, was chairperson. Committee members were Norb Dettmann, CMP, PhD (Professional College Management); Susie Carr, CMP (Annuity Board of the SBC) and Greg Pynes (Town of Addison).

Each of the 23 participants will be awarded Continuing Education Units (CEUs) for the "Walk a Mile in My Shoes" program.

"Walk a Mile in My Shoes" Inaugural Class

- Jim Belcher • Integrity Publishing Corporation
- Traci Bower • Reunion Ranch Inc.
- Karen Buchleiter • Richland College
- Dena Carr • Dallas CVB
- Kathleen Garland • Richland College
- Mary Scott-Gwyn • Richland College
- Arleen D. Hazlewood • Richland College
- Jill Heyerdahl • XTS Travel Service & Incentives
- Keith Hickman • SABRE Travel Info. Network
- Stephanie M. Jackman • Richland College
- Kristine Klasen • Dallas CVB
- Jennifer McClure • Theatre Operating Co., Inc. (Majestic Theatre)
- Carol Marks • Carol Marks Music
- Kelly Presley • Carol Marks Music
- Tamara Quilty • Dallas CVB
- Becky Rangel • Dallas CVB
- Sandra Rutherford • Rutherford & Associates
- Greg Slaight • SABRE Travel Info. Network
- Sherri Starr • Dallas CVB
- Sue Stevens • Richland College
- Cynthia Stokes • Ducky-Bob's Party & Tent Rentals
- Jill Welke • Bill Reed Decorations
- Amy Williams • Intern'l Risk Mgt. Institute, Inc.



Several members of the "Walk a Mile in My Shoes" inaugural class pause for a group photo. **Colleen Albert Rickenbacher, CMP** (Dallas CVB), chair of the unique educational partnership program, is on the front row, far left.

CEU Documentation Forms Available at July Chapter Meeting

MPI Noncredit Educational Programs Approved for CEUs

By Greg Pynes
Town of Addison

The Continuing Education Unit (CEU)—a nationally recognized unit of measure used to quantify noncredit continuing education and training activities—is now available to MPI members participating in accredited educational sessions at both the international and chapter level.



Greg Pynes
V.P./Education

CEU credits are now available for participation in monthly chapter meetings, "Brown Bag" educational sessions, the CMP Study Course, the "How to" breakfast series, as well as educational courses at MPI Annual Conventions, Professional Education Conferenc-

es and Institutes.

Forms for chapter level CEU credit will be available at the July D/FW Chapter meeting.

This accreditation is especially helpful for MPI members seeking the CMP designation, or in need of accredited training hours for merit increases.

The CEU is designed for use where employers, licensure agencies—including CMP—and other authorities require a specified number of noncredit study hours for career advancement.

One CEU is awarded for each 10 contact hours of instruction. A contact hour is one clock hour of educational programming.

Qualifying educational programming includes classroom or meeting session time

led by an instructor, discussion leader, or speaker; and special chapter programs such as site visits and retreats.

Social events, the food and beverage portions of monthly programs, fundraising events and other similar activities are not credited toward CEU time.

Local chapters will award CEUs for individual chapter activities. CEUs for association activities such as the PEC Annual Convention and Institutes will be awarded by International Headquarters.

All CEUs earned through MPI become a part of permanent membership records.

The D/FW Chapter will provide documentation forms at chapter meeting. The chapter will provide copies of completed forms to MPI International Headquarters, where a permanent CEU record will be maintained for seven years.

MPI was approved by the International Association of Continuing Education and Training for CEU membership in February 1994.

Chapter Programming that Qualifies for CEU Accreditation:

- classroom or meeting session time led by an instructor, discussion leader, or speaker.
- special programs such as site visits and retreats

New Programming

The PO⁴Ds Are Coming!

By Norb Dettmann, PhD, CMP
Professional College Mgt. Int'l

The question before the Education 2000 Task Force, appointed last fall by Chapter President Diane Smith, CMP (Alcon



N. Dettmann, PhD, CMP
Professional College Management Int'l

Labs): "How can we develop and deliver our chapter's educational mission to almost 600 members spread throughout the Dallas/Fort Worth metroplex?"

The Board of Directors conducted a survey and the most frequent response was a request for "member involved" education programs. The respondents asked for a program that met these criteria: variety, plus ease of time, distance and cost.

After a number of meetings and a lot of research, the task force divided the metroplex into ten PO⁴Ds (Professional Opportunity for Development) areas. Within each PO⁴D will be a facilitator who will develop with the PO⁴D members an educational program to meet the criteria of time, distance, cost and variety.

The PO⁴Ds are not meant to replace member participation at monthly programs and on-going chapter educational sessions. Instead, the PO⁴Ds are a means by which chapter members can, at their leisure, get together with other chapter members within their geographical area, on their own time schedule, to discuss areas of interest.

The Board of Directors has approved the initial concept. The Task Force is hammering out the details. The PO⁴Ds are coming!

Look for more information soon in the new "PO⁴D Corner" in the *CURRENT*.

June Meeting Highlights

Dallas Cowboys Quarterback Jason Garrett Discusses Teambuilding at Texas Stadium Club



At the June D/FW Chapter meeting, Dallas Cowboys quarterback **Jason Garrett** shared his thoughts on teambuilding. In an informative and entertaining presentation with real life examples of successful teambuilding applicable to the meetings industry, Garrett discussed ways to identify team players, emphasize their strengths, and maximize their contributions towards achieving a common goal.

Photos by Mark Lazarow Photography



Program Committee members for the June included **Firstname Lastname?** (Company Name), **Stephanie Staubach** (Personalities International), **Amanda Willbanks** (Adolphus Hotel), and **Marsha Singer** (The Executive Connection).



1994-95 President-Elect **Phyllis Firebaugh, CMP**, (Krisam Group) displays a check for \$6,450 to the MPI Foundation. Firebaugh was chair of the fundraiser, which brought in twice the amount the D/FW Chapter has ever raised for this effort—and more than any other chapter raised last year.

'The Kids Charity Ball' Check Presentations to Four Charities a Focus at June Meeting

Representatives from four local charities, North Texas Food Bank, Love for Kids, Give Kids the World and Trinity Ministry to the Poor, were present at the June meeting to accept checks from the D/FW Chapter of MPI. The gifts were the proceeds from the The Kids Charity Ball. Pictured with each representative is 1994-95 D/FW Chapter President **Diane Smith, CMP** (Alcon Labs). Announcing each presentation is 1994-95 Vice President/Public Relations **Mary Lynn Novelli** (Sterling Hotels & Resorts)



North Texas Food Bank
Carlton Lee Spinks, director of development for North Texas Food Bank, accepts a check for \$5,084.98.



Give Kids the World
Samantha Bernecker accepts a gift of \$25,424 for Give Kids the World.

Photos by Mark Lazarow Photography



Love for Kids
 LEFT: LFK President **Sandy Huffman** accepts a check for \$15,254.94 for Love for Kids, Inc.



Trinity Ministry to the Poor
Brandy Davis, volunteer coordinator, and **Mike Stahl**, director of development, accept a check for \$5,084.98 on behalf of Trinity Ministry to the Poor.

'Best Overall/Editorial and Design' Chapter Newsletter Wins Award at Leadership Workshop

Highlighting the closing session of the recent Chapter Leadership Workshops—the annual training series for chapter leaders—were the chapter newsletter awards for outstanding editorial and design.

The *CURRENT*, the monthly newsletter of the D/FW Chapter of MPI, was named “Best Overall/Editorial and Design” in the medium-to-large chapter division.

Awards were presented by Tina Filipski, director of publications for MPI and editor of *The Meeting Manager*.

“The *CURRENT* stood out from the rest because it uses a consistent design from issue to issue and contains interesting columns and departments such as the ‘Opinion, Please’ and Member’s Perspective’ pieces,” Filipski said. “It is well organized and easy to read.”

Accepting the award for the chapter was Gracie H. Hilton (The Write Stuff), editor of the *CURRENT* for the past three years.



Editor **Gracie Hatfield Hilton** (The Write Stuff) displays the plaque awarded to the D/FW Chapter of MPI. The *CURRENT* was named “Best Overall” in the large chapter category.

“Mark Lazarow (Mark Lazarow Photography) contributed immeasurably to this award,” said Hilton of the chapter photographer for more than three years.

“The photos ‘make’ the newsletter—they’re the magnet attracting readership—no doubt about it,” she said.

“I always enjoy watching people open their newsletters,” Hilton said. “They go immediately to the centerspread (the pictorial recap of last month’s meeting) to see who’s there. Then, as they thumb through the other pages, they’re more likely to stop and read the articles with photographic illustrations.”

“Kudos, too, to V.P./Public Relations Mary Lynn Novelli (Sterling Hotels & Resorts), Advertising Chair Stephanie Davis (Sheraton Park Central Hotel) and to the many *CURRENT* contributors—all of whom are good-natured about their copy being edited to fit, and to conform to newsletter style,” Hilton said.

“A half-dozen or so regular departmental liaisons and proofreaders also share credit for this award,” she said.

Other Award Winners

Other award winning newsletters in the medium-to-large chapter division were: Chicago Area Chapter—“Best Design” and Northern California Chapter—“Best Editorial.”

In the small chapter division, the Yankee Chapter was named “Best Overall/Editorial and Design.” Other award winning newsletters in this division were: Kentuckiana Chapter—“Best Design” and Rocky Mountain Chapter—“Best Editorial.”

Chapter Leadership Workshops

“Success Through Involvement” was the theme of the weekend training session which featured presentations by professionals, breakouts and roundtable discussions for chapter presidents, education/program and membership chairs, treasurers, and newsletter editors.

Hilton was one of several presenters



CURRENT Photographer **Mark Lazarow** (Mark Lazarow Photography)—in a rare photo (shot by Editor Gracie H. Hilton) at the February chapter meeting—has provided photos for the chapter’s award-winning newsletter for more than three years.

in the Newsletter Editors Workshop. Attendees included 37 editors from chapters throughout the United States and Canada, as well as a representative from MPI Italia, the D/FW Chapter’s “Sister” or Gemelli Chapter.

D/FW Chapter member Sherri Cook, CMP (Sherri Cook & Associates) made a presentation to the workshop designed for chapter membership chairs.

Among the 220 participants in the weekend training session were D/FW Chapter members Greg Pynes (Town of Addison), Sally Goldesberry, CMP (Meetings and Exhibit Specialists), and Michelle Carter (Southfork Event & Conference Center).

D/FW Chapter member Mona Kesler (Bauer Audio-Visual), a participant in the spring MPI Italia Chapter trip and seminar, joined the D/FW workshop participants on a free evening to entertain the three representatives from the Gemelli Chapter.

The Hyatt Regency Dallas at Reunion hosted the Leadership Workshops. Delta Air Lines sponsored presidents’ travel for the fourth consecutive year. American and United Airlines provided discounted tickets for other chapter leaders.

INSTITUTES 1995

Three certificate programs
for meetings management
offering five-day, in-depth
educational experiences

INSTITUTES I, II & GRADUATE



AUGUST 13-18, 1995

**Pointe Hilton Resort
at Tapatio Cliffs
Phoenix, Arizona**

INTRODUCING GRADUATE INSTITUTE



Open to all member and
nonmember planners with
preference given to those who
have completed Institute II.
Registration for the new
program is limited to the first
twenty (20) qualified applicants.

MPI

MEETING PROFESSIONALS INTERNATIONAL®
Committed to Educational Leadership

**REGISTER TODAY!
SPACE IS LIMITED**

◆ Four Continuing Education
Units (CEUs) are awarded for
Institutes attendance

◆ For more information,
call 214-712-7751

CURRENT Deadlines

Upcoming deadlines for copy and
ads for the D/FW Chapter of MPI
newsletter, the *CURRENT*—

ISSUE	DEADLINE
August '95	July 14, Friday
Sept. '95	August 18, Friday
Oct. '95	Sept. 15, Friday
Nov. '95	Oct. 13, Friday
Dec. '95	Nov. 10, Friday
Jan. '96	Dec. 15, Friday

Copy is cheerfully accepted early.
Because of production schedules, infor-
mation received after 5 p.m. on the dead-
line day will not be included in the news-
letter in progress.

Late-arriving copy will be included
in the next month's issue, if information
is still timely.

Please mail 3.5 disk, Windows for-
mat—preferably in Microsoft Word or
WordPerfect—to Gracie H. Hilton (The
Write Stuff), *CURRENT* editor, 3020 Glas-
gow Court, Arlington, TX 76015 or via
CompuServe: 75647,22.

MPI

MEETING PROFESSIONALS INTERNATIONAL®

DOLLAR\$ & CENT\$ D/FW Chapter/MPI

For the month ending April 30, 1995

Beginning of the Month	\$78,076.00
Income	16,741.23
Disbursements	(12,670.29)
EOM Balance	\$82,146.94*

*Includes \$19,758.45 PEC
Professional Education Conference

*Includes \$2,048.43 PGA
Professional Growth Award

*Includes \$16,677.77 ACE
Annual Charity Event

Report submitted by Carolyn Carey, CMP
(SEI Incentives), immediate past vice president/
finance.

News Briefs

Entries Sought for Global Paragon Award

Entries for the Global Paragon Award,
an industry-wide program recognizing
exceptional and distinctive meetings, are
now being accepted for the 1995 competi-
tion.

A brochure outlining entry procedures
will be mailed to all members in July. The
deadline for entries is October 20.

For more information, call MPI's
Marketing Department, 214-712-7750.

Special Interest Groups to Meet in San Antonio

Two Special Interest Group Forums
convent next month in Texas.

The Independent Meeting Professional
Forum will meet August 11-13. The
Healthcare Meeting management Sympo-
sium takes place August 12-14. Both will
be held at La Mansion Del Rio Hotel in San
Antonio.

For registration information and
program specifics, call Rachel Hill at MPI
Headquarters, 214-712-7732.

1995-96 President's Honor Roll Debuts

"Lights, Action, Recruitment" is the
theme of the 1995-96 membership cam-
paign which debuts this month.

The President's Honor Roll rewards ex-
isting members for enrolling new associa-
tion affiliates. The top prizes include a sev-
en-day excursion for two to Barcelona,
Spain; a four-day trip to Beverly Hills, CA;
and a complimentary registration and flight
to the 1997 Professional Education Confer-
ence-North America in San Francisco.

For more information, call MPI's
Marketing Department, 214-712-7750.

D/FW Chapter

MPI

MEETING PROFESSIONALS INTERNATIONAL®

**Chapter
of the Year 1994**

**Chapter
Newsletter Award 1995**

**Chapter of the Year 1988
Chapter of the Year 1989**

MEMBERSHIP NEWS

'New Kids on the Block'

D/FW Chapter Welcomes 21 New MPI Members!

Jo Baker
Life Insurance Co. of Southwest
1300 N. Mockingbird Lane
Dallas, TX 75247
214/638-9131
Planner

Michael K. Benton
Irving Convention & Visitors Bureau
3333 N. Mac Arthur #200
Irving, TX 75062
214/252-7476
Supplier

Catherine Berryman
Student
1407 Bernard #238
Denton, TX 76201
817/566-5728
Student

Sue Bessonette
Holiday Inn DFW Airport South
4440 N. Airport Freeway
Irving, TX 75062
214/399-1010
Supplier

Pat Bingham
Dallas Fan Fares, Inc.
5485 Belt Line Road #270
Dallas, TX 75240
214/239-9969
Planner

Frances Booker
South Padre Island Convention &
Visitors Bureau
1940 Branch Hollow
Dallas, TX 75007
214/316-0229
Supplier

Kim Brown
Resort Golf Meetings
18352 Dallas Parkway, #136
Dallas, TX 75287
214/407-0170
Planner

Joe Diaz
Delta Air Lines
8700 N. Stemmons #211
Dallas, TX 75247
214/879-6000
Supplier

Charlene Dykes
Culinaire International
650 S. Griffin
Dallas, TX 75202
214/658-8871
Supplier

Robert Eilers
Meeting Professional International
1950 Stemmons Fwy; Suite 5018
Dallas, TX 75207
214/715-7704
Planner

Barbara Hammond
Tascor
1531 Brighton
Carrollton, TX 75007
817/962-8738
Planner

Deronda Jones
Automotive Oil Change Association
12860 Hillcrest #229
Dallas, TX 75230
214/458-9468
Planner

Terri Neef
Occidental Chemical Corporation
5005 LBJ Freeway; 19th Floor
Dallas, TX 75244
214/404-3672
Planner

Georgia A. Porter
Southwestern Life Insurance
Company
500 N. Akard Street
Dallas, TX 75201
214/954-7249
Planner

Misty Reich
McCaw Cellular Communication
5757 Alpha #1000
Dallas, TX 75240
214/776-4465
Planner

Donna Schott
Travel King of Dallas
140 Exchange Park
Dallas, TX 75235
214/357-1800
Supplier

Brenda Sheets
American College of Eye Surgeons
700 N. Grant #702
Odessa, TX 79761
915/335-0077
Planner

Kathy Walker
Club Corporation of America
3030 LBJ Freeway #600
Dallas, TX 75234
214/888-7365
Planner

Pat A. Yandell
Northern Telecom Inc.
2221 Lakeside Drive; C0633
Richardson, TX 75082
214/684-0690
Planner

Beth Nelson Belt, CMP
Salt Lake CVB
180 S. West Temple
Salt Lake City, UT 84101
801/521-2822
Associate Member/Supplier

Madeline Daryadel
Bonaventure Resort & Spa
250 Racquet Club Road
Ft. Lauderdale, FL 33326
305/389-3300
Associate Member/Supplier

Membership Renewals



Linda Caldwell
Stonebriar Country Club

Camille Cline
Richardson CVB

Anne Copeland
Mech. Contractors Assn of Dallas

Linda Dipert
Dipert Coaches, Inc.

Delinda Dudley
Six Flags Over Texas

Debbie Duggan
The Adolphus Hotel

Hugh Elmore
The Beach Club

Lynn Erney
Stouffer Renaissance Dallas Hotel

Nadan Goyal
Passport & Visa Express

Ronald Grayson
Odyssey Comm. Group Inc.

Rosemay A. Hall
Mary Kay Cosmetics Inc.

Gracie Hilton
The Write Stuff

Hugh Hunt
Hugh Hunt Productions

Bruce Jaster
The Jaster Companies

Joy Johnson
Southfork Ranch & Conf. Ctr.

C. N. Kendall
Ken-Ran Entertainment

Lisa Spitz
Harvey Hotel Plano

Linda Vest
State Farm Insurance Companies

Melanie Weaver
Sheraton Park Central Hotel

Amanda Willbanks
The Adolphus Hotel

Skip Williams
Bauer Audio Visual Inc.

Shivaun Wilson
Lockheed Fort Worth Company

Associate Memberships Now Available

By Sally Goldesberry, CMP
Meetings & Exhibit Specialists

The D/FW Chapter now offers members of other chapters an opportunity to join as an associate member.

An associate membership is \$60. Benefits include participation in all chapter activities.

The New Associate Membership category was designed to meet the needs of meeting professionals who live outside of—but do business in—the D/FW area.



S. Goldesberry, CMP
Vice President/
Membership

To qualify for D/FW Chapter Associate Membership, a person must be a current MPI member of another chapter and keep his membership renewed

with MPI International.

With the exception of voting benefits, an associate member of the D/FW Chapter is entitled to all other privileges of regular membership.

Benefits include • all chapter monthly mailings, including the newsletter and other activities announcements; • a copy the Chapter Membership Directory; • listing as an Associate Member in the Directory; • preferred advertising placement in our monthly newsletter and Annual Directory; • attendance at monthly meetings at the member rate for advance registration; and • participation in all chapter activities.

Completed application forms—available at monthly meetings and through the D/FW Chapter office—should be forwarded with a check to the D/FW Chapter office at 10875 Plano Road, Suite 115; Dallas, TX 75238.

MPI

MEETING PROFESSIONALS INTERNATIONAL®

Membership Benefits

✓ Publications

- Meeting Manager (I)
- D/FW Chapter Newsletter—*CURRENT* (C)
- MPI Express (I)
- International Directory (I)
- Local Chapter Directory (C)

✓ Continuing Education

- Annual Meetings: PEC, Annual Conference, and Institutes I & II (I)
- CMP Courses: University and Informal Study Courses (C)
- "How To" Breakfasts (C)
- Brown Bag Lunches (C)
- Richland College Courses (C)
- "Walk A Mile In My Shoes" Hands-On-Training (C)
- Monthly Meetings
- Special Interest Groups (C)
- Executive Workshops (C)

✓ Networking

- Monthly Meetings (C)
- Committee Involvement (C)
- Gemelli Chapter (C)
- MPINet (I)
- Buddy Program (C)
- Information Exchange (I&C)
- Diverse Marketing (I&C)
- Industry Trends (I&C)
- Business Opportunities (I&C)
- Business Relationships (I&C)
- Peer Interaction (I&C)

✓ Career Assistance

- Job Bank (C)
- Scholarship Opportunities (C)
- Unemployed Meeting Assistance (C)

✓ Marketing Your Product/Service

- Mailing Labels for Purchase (I&C)
- Advertising in Publications (I&C)

✓ Professional Growth

- Local Chapter and International Level Awards (I&C)
- Community Activities (C)
- Monthly Meetings (C)
- State of the Art Meeting Industry Software and Tapes (I)
- Discounts on Credit Cards, Car Rentals, Insurance, Hotel & Shipping (I)
- PGA—Professional Growth Awards (C)
- Committee Involvement (I&C)

✓ Research Information

- Governmental Affairs (I&C)
- Resource Center (I)
- MPINet (I)
- MPI Foundation (1)
- Government Liaison—Legislative Action (I&C)

Benefit Keys (I) MPI International (C) DFW MPI Chapter

Chapter Committees Need You for Growth and Strength

By Sally Goldesberry, CMP
Meetings & Exhibit Specialists

The new MPI year begins this month, and I invite every MPI member to look at the many opportunities our chapter has to offer and get involved in one of our committees!

Since 1979 I have been involved in MPI—in three different chapters across the country. The business relationships developed throughout the years have been invaluable to my career; a network of MPI members has always been there to provide immediate professional services, as well

as many special friendships.

Learn all about service opportunities in "Seeds to Success," July's program theme.

We need *you*—to plant ideas, nurture and participate in the committee programs and projects.

Your participation in chapter activities will: · increase business contacts; · provide continuing education; and · provide networking opportunities

Take this opportunity to plant your "Seeds to Success" and get involved in the D/FW Chapter now!



HELP WANTED!

Ever wanted to teach? Here is your opportunity! The Department of Travel & Tourism at Richland College is looking for an instructor to teach International Meeting Planning for the fall 1995 semester. Minimum requirements: bachelor's degree and current employment in the meetings industry. Call Greg Pynes/Town of Addison @ 214-450-6202.

Opportunities for Involvement

Education Committees

- "How To" Breakfasts
- Executive Workshops
- Brown Bag Luncheons
- Professional Growth Awards (PGA)
- Walk A Mile in My Shoes Program
- Richland College Program
- CMP Study Program

Membership Committees

- Member Orientation & Buddy Program
- Member Involvement/Meet & Greet
- Recruitment
- Retention/Renewals
- Mentor Program

Programs Committees

- Monthly Program Committees
- Registration
- Newsletter & Publicity
- Mo. Evaluation Reports/Prize Drawing

Public Relations Committees

- Newsletter
- Advertising
- Community Relations
- Government Affairs
- Chapter of the Year Book

SUMMER MEETING SPECIALS!



You'll be suprised at the creative options Southfork offers in menus, activity and break suggestions - not to mention the newly renovated and furnished facilities for small groups! Packages available with area hotels for housing and transportation needs!

Southfork
R A N C H

MPI Facility
of the Year
1994

EVENT & CONFERENCE CENTER Call today for information!
(214) 442-7800

President's Message • Commitment to Excellence

continued from page 1

Education 2000 Task Force, the PO⁴D idea will swing into action soon. Creating new forums designed to multiply your educational and networking experiences, the PO⁴D concept will allow members to meet in their own neighborhoods.

No other MPI chapter has been recognized three times as "Chapter of the Year." Ours is a proud heritage! It instills an incredible challenge to set leadership standards and develop our greatest potential—creating a bold new vision.

This month's program, "Seeds of Success," introduces ideas for involvement in chapter activities. Our members are the chapter's "natural resources." And MPI is your strongest resource for keeping current on state-of-the-art programs, technology and trends in the meetings industry.

Plug into your major area of interest and reap the rewards of MPI membership. Pull the enclosed chapter calendar and use it as you plan to "grow" your most successful professional year.

Your reward? Professional information unavailable through other venues, building trust in relationships with industry peers, and excelling through a personal and corporate drive to exceed expectations.

Join now to build on our proud heritage with a *Commitment to Excellence!*

Two D/FW Chapter Members are 'Tomorrow's Leaders'

Gail Lemaire's Journal Records Highlights of MPI's Annual Convention

By Gail Lemaire
The Adolphus Hotel

Day One—Sunday, June 25

We arrive at Chicago's Navy Pier to find the facility not quite ready to welcome 1995 MPI Annual Convention. But work is going on frantically and all our needs are met.

Almost all D/FW Chapter members signed up to be "Dallas Ambassadors" to promote the December PEC. Our Dallas booth is right in the registration area and we "welcome" everyone with "Come to Dallas" stickers and much enthusiasm.



Gail Lemaire
Convention Liaison

At 3:00 p.m. we gather in the general session and are welcomed with hard hats. The session begins with a hilarious "MPI Today" show format with interviews conducted by "Scorch," the 1300-year-old green dragon.

We're entertained by the Chicago City Lights Orchestra—great music and a laser show. The session includes President Bill Boyd (of Sunbelt Motivation & Travel, Inc. in Irving—our fellow chapter member) relating three major milestones of his administration: the name change of our association, the unprecedented growth in membership to 13,000 and the 10th anniversary of the CMP program.

The session continues with the former Governor of Kentucky, Martha Layne Collins who spoke about "Partner Relationships."

Today's highlight: the awards won by Stephen Clark, planner from CUNA Mutual Group and Nell Lockhart, supplier from the St. Louis Zoo.

Our real thrill came from a new award, "Tomorrow's Leaders"—won by our own Sherri Cook, CMP (Sherri Cook and Associates) and new D/FW Chapter

member Mollie Wallace (Miller Freeman)—who has just moved to Dallas.

The day concludes with the convention's opening reception held at the Navy Pier—lots of fine Chicago food and entertainment.

Day Two—Monday, June 26

There are a dazzling array of educational sessions—more than 75 to choose from.

Meeting Place '95 opens at 11:00 a.m. with the largest trade show in the history of MPI. It includes 400 booths. This year, for the first time, there is an entire aisle of international exhibitors—new MPI members.

Tonight is the annual fund-raiser for the MPI Foundation "Rendezvous for a Reason." Lots of Dallas folks partied!

Day Three—Tuesday, June 27

We all arrive at the Navy Pier at 7:00 a.m. to rehearse for our Dallas presentation which opens the second general session. We certainly made an impact—only the sleepers could miss that PEC will be held in Dallas this December.

Keynote speaker Dr. David Suzuki was back by popular demand. Speaking passionately and eloquently about the environment and what is happening to our planet, Dr. Suzuki presented one of the most riveting and thought-provoking speeches anyone will hear this year.

Nashville kicks off its "push" to attend next year's conference. The BBQ luncheon is followed by fabulous entertainment—the famous, award-winning Ronnie Milsap sings every favorite tune he's recorded and the crowd goes wild!

The conference comes to a close with a unique and wonderful dinner at the grand new Chicago Sheraton Hotel which presents its new "cuisine of the Americas" menu—a real treat. We enjoyed entertainment by the popular group, "The Blues Brothers." A good time was had by all!

Another convention highlight: Phyllis Firebaugh, CMP (Krisam Group), 1995-96 D/FW Chapter president, and Diane Smith, CMP (Alcon Labs), 1994-95 president, presented our chapter's donation to the MPI Foundation. It was the largest check from any chapter—\$6,450.

All of our chapter members are especially grateful to fellow member Colleen Albert Rickenbacker (Dallas CVB) who got us all organized and brought extra shirts, flags, cow bells and other necessities for our "Come to Dallas for PEC in December" promo.

Thanks, too, to Ellen Beckert and the Freeman Companies—they decorated the Navy Pier, produced the hundreds of signs, yards of pipe and drape, and a myriad of other detailed touches to transform the Navy Pier into the conference site for "All One World." It was an incredible feat!

CONGRATS!

to Tomorrow's Leaders!

D/FW Chapter Members

Sherri Cook, CMP & Mollie Wallace!

More Convention News & Photos
in the August issue of the **CURRENT**

'The Kids Charity Ball'— A Rewarding Educational Odyssey

By Patti Wilke, CMP • Chair, The Kids Charity Ball 1996

In 1995, more than 100 chapter members volunteered their time to produce The Kids Charity Ball. Why?

In addition to the personal reward of feeling good about helping terminally ill and underprivileged children, work on TKCB provides excellent networking opportunities, it's a terrific way to make the public aware of MPI and the important role of the meetings industry—and, it's one of the best educational opportunities MPI has to offer!



*Patti Wilke, CMP
Chair, The Kids
Charity Ball 1996*

Consider this educational odyssey—

- The journey begins in September as committee members get acquainted and sets goals.
- The fall months continue with sponsor solicitation, venue selection and theme development. Watch the various committees make a theme become reality through decor, program design, entertainment and more!
- By January, invitations are printed and press coverage begins. You'll learn a lot about public relations by watching TKCB PR group in action!
- February & March bring the final touches. From the flow of the program, to use of audio-visual, to lighting and staging and room layout and set up, The talents of MPI members make TKCB an evening to remember!

"Grow" your professional and skills through involvement at the committee level. Volunteering to work on TKCB is an opportunity to experiment and to do it all—to work with others to create and design an event where the only limits—except for budget!—are our imagination.

The Kids Charity Ball 1996 Advisory Committee:—Chair Patti Wilke, CMP; Chair-elect Greg Pynes (Town of Addison); Advisors to the Chair Steve Kemble (Steve Kemble Event Design) and Mary Lynn Novelli (Sterling Hotels and Resorts); and Advisors Pat McCain, CMP (Krisam Group); Tracey Smith (Computer Language Research, Inc.); Cheryl Beasley, CMP; and Dana Nickerson, CMP (Square One Productions)—urge you make a difference in the lives of underprivileged and terminally ill children, while forming new friendships within the D/FW Chapter of MPI.

Come travel with us and learn something new! To volunteer for one or more of the 17 TKCB committees, call TKCB Chair Patti Wilke, CMP at 214-361-7789.



WE'LL TAKE CARE OF THE MEETING SO YOU CAN TAKE CARE OF BUSINESS.

The Hiltons of Texas can provide you with the services and facilities to make your meeting go exactly as planned. From comfortable meeting rooms and support services to an experienced and attentive staff, we have the consistency you're looking for. For reservations, call any Hilton in Texas, or call Hilton Direct at 1-800-321-3232.



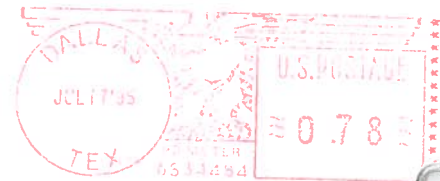
Arlington Hilton • Beaumont Hilton • College Station Hilton and Conference Center • DFW Hilton Executive Conference Center
Dallas Parkway Hilton • El Paso Airport Hilton • Houston Hobby Airport Hilton • Houston Plaza Hilton
Houston Southwest Hilton • Nassau Bay Hilton and Marina • San Antonio Airport Hilton and Conference Center
Westchase Hilton and Towers • Waco Hilton Inn

HILTON. SO NICE TO COME HOME TO.

MPI

MEETING PROFESSIONALS INTERNATIONAL®

Dallas/Fort Worth Chapter
10875 Plano Road • Suite 115
Dallas, Texas 75238



DALLAS/FORT WORTH CHAPTER

MPI

MEETING PROFESSIONALS INTERNATIONAL®

Meeting Professionals International is the world's largest association of meetings professionals with more than 12,000 members in 42 countries and 50 chapters and clubs. MPI's mission is to provide educational opportunities and recognition for those in the meetings industry. The association is committed to excellence in meetings, continuous international growth, research, a strong chapter network and high ethical standards.

MPI International Headquarters
INFOMART
1950 Stemmons
Suite 5018
Dallas, Texas 75207-3109
214-712-7700

MPI
Dallas/Fort Worth Chapter
10875 Plano Road
Suite 115
Dallas, Texas 75238
214-343-0555

Officers

President

Phyllis Firebaugh, CMP
Krisam Group
214-458-8692

President-Elect

Mary Lynn Novelli
Sterling Hotels & Resorts
214-402-4875

Immediate Past President

Diane Smith, CMP
Alcon Laboratories, Inc.
817-551-8077

Vice President/Administration

Linda Sergeant
Bill Reed Decorations, Inc.
214-823-3154

Vice President/Education

Greg Pynes
Town of Addison
214-450-6202

Vice President/Finance

Charlotte Merrill-Davis
Event Source Professionals
817-267-6698

Vice President/Membership

Sally Goldesberry, CMP
Meetings & Exhibit Specialists
214-407-0755

Vice President/Programs

Michelle Carter
Southfork Event & Conference Center
214-442-7800 x281

Vice President/Public Relations

Dana Nickerson, CMP
Square One Productions
214-343-8067

Board of Directors

Planners

Susie Carr, CMP
Annuity Board of the SBC
214-720-4658

Sherri Cook, CMP
Sherri Cook & Associates
214-732-9396

Tracey Smith
Computer Language Research, Inc.
214-250-7404

Deborah Wheeler
Society of Petroleum Engineers
214-952-9311

Suppliers

Traci Bower
Reunion Ranch
214-271-2666

Gail Lemaire
The Adolphus Hotel
214-742-8200

Jan Pollard
Omni Hotels National Sales Office
214-444-0044

Kathi Thompson
The Inn on the River
214-424-7119

CURRENT Staff

Editor

Gracie Hatfield Hilton
The Write Stuff
Ph. & FAX 817-467-7439

Advertising Director

Stephanie Davis
Sheraton Park Central Hotel
214-851-2016



TEXAS TEAM UP
 SPONSORED BY HAMPI
 (HOUSTON AREA MPI)



August 4-6, 1995

Plan to join your fellow Texas MPI Chapter members at the annual MPI Texas Chapter retreat, being held this year in Houston, August 4th - 6th

You should have already received your registration form, but just in case you haven't, please use the form below to sign up. Plan now to take advantage of the exciting educational sessions being offered (**CEU's will be awarded for all educational sessions**):

"Team Power" - Presenter: Hattie Hill Storks

"More Team Power" - Presenter: Hattie Hill Storks

"The Interactive Planning Challenge" - Presenter: Susan Greene-Davidson

"Set-up - There's Nothing To It!" - Presenter: Freda Monk, CMP (Facilitator)

There's plenty of networking opportunities planned as well -- a road rally, an opening reception on the set of "Historic Houston" and a trade show.

Our friends from Houston MPI and Hill Country Chapter MPI supported us last year at the Lone Star Link Up, now it's our turn to lend support and learn at the same time!

SEE YOU IN HOUSTON!!!

HAMPI
TEXAS TEAM UP
 August 4 - 6, 1995

Please Note: Registration deadline is **July 21, 1995**.
Payment must accompany registration.
 Cancellations received in writing or postmarked before July 21 will be fully refunded; after July 21 no refunds will be given.

Please complete and mail with your check to:

HAMPI
 Texas Team Up Weekend
 P.O. Box 300161
 Houston, TX 77230-0161

I am a: (check all that apply)
 Planner Supplier
 Guest Exhibitor Only
 MPI Number#

Name _____ Title _____

Company _____

Address _____ City, State, Zip _____

Phone _____ Fax _____

Registration Fees:	MPI Planner/Supplier Member	\$75.00	* Fee Includes Registration for all events.
	Non-Member Planner/Supplier	\$95.00	**Fee includes registration and trade show for one attendee.
	Guest	75.00*	
	Exhibitor	\$150.00**	
	Exhibitor/Trade Show Only	\$100.00	Note: One Addl. Exhibitor - \$75.00

VOLUNTEERS NEEDED

FOR

Love For Kids, Inc.

“All Kids Count”

Fifth Annual Picnic/Fun Day

for children that are medically fragile, or
have a disability or chronic illness &
their family members & caregivers

at

Circle R Ranch

Flower Mound, TX

Sunday, July 30, 1995

9:30 a.m. - 1:30 p.m.

Admission is Free

Activities Include :

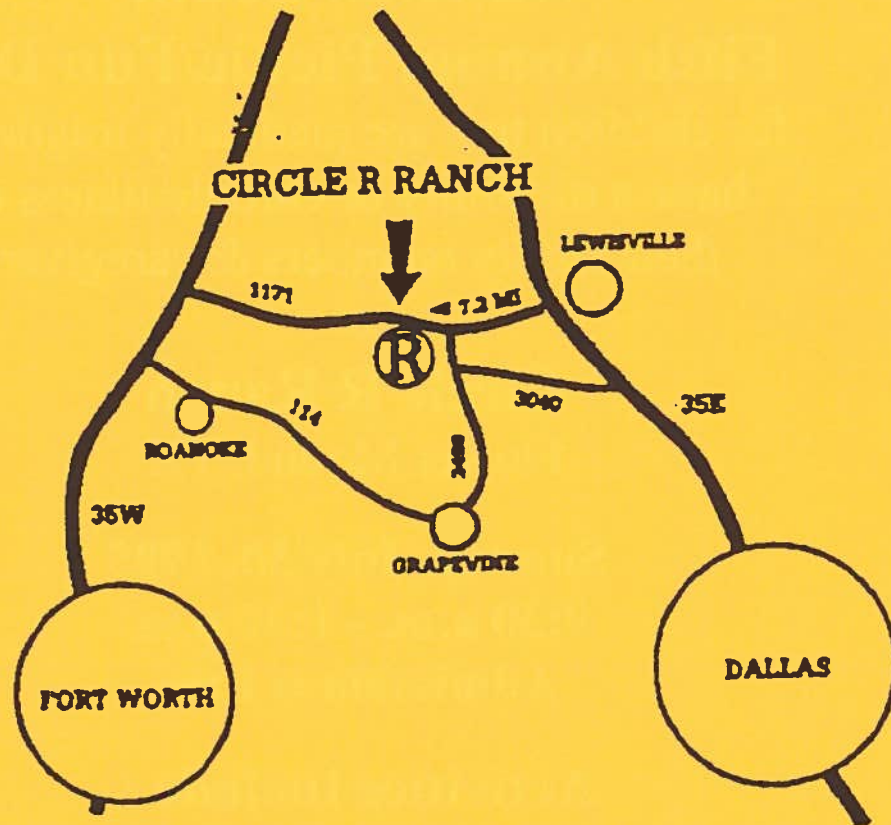
Swimming Petting Zoo Entertainment
Face Painting Horse Back Riding Games Clowns
Special Activities in the Air-Conditioned Barn
Enjoy Hot Dogs, Cold Drinks, & Ice Cream

VOLUNTEERS DUTIES INCLUDE :

- * ASSIST CHILDREN WITH DISABILITIES
- * SIGN LANGUAGE & SPANISH INTERPRETERS
- * HELP WITH GAMES & ACTIVITIES * PHOTO TAKING
- * SERVE FOOD & DRINKS * DIRECT PARKING
- * SUPERVISE SWIMMING * CLEAN UP
- * OTHER MISCELLANEOUS DUTIES

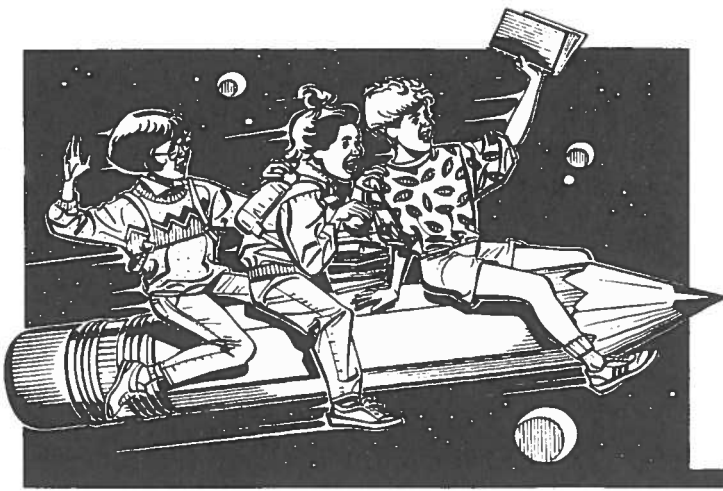
**WE NEED YOU! INTERESTED VOLUNTEERS
CALL LOVE FOR KIDS AT 426-LOVE.**

Circle R Ranch Facility Map



Volunteers will be available to assist families.

We hope to see you there!



Singles Charity Extravaganza

Featuring The Bill Tillman Band

Also Silent Auction with Live Entertainment

\$25 minimum donation per ticket (tax deductible)

Orders must be post-marked by July 10, 1995

Tickets limited*

Participating DFW Area Singles

- The Fourth Session*
- Sporting Life of Ft. Worth
- Great Expectations***
- Tall Texans of Dallas
- All Saints
- Holy Family
- Prince of Peace
- St. Rita's
- Unity Singles
- By Invitation Only*
- Cowtown Mariners
- The Happenings
- Mid-Cities Social Parties
- Funtastic Mixers
- Best of the Southwest Singles
- Active Singles: The Sports Set
- Connections
- Getting to Know You
- Downtown Singles (Ft. Worth)
- New Horizons (Ft. Worth)

No Smoking Please

Door Prize!
Trip for 2
TROPICAL HIDEAWAY
BEACH RESORT



Back To School Party

Sunday
July 30th
7:00 to
11:00 pm

Orders must be post-marked by July 10, 1995



DALLAS CAN! ACADEMY



Benefiting
Dallas & Ft. Worth Kids

Contributors

- The Dallas Observer
- Solo for Singles
- The Doubletree Hotel
- Clampitt Paper Company
- Carter Business Center
- Great Destinations Travel

- ♦ Dressy Casual
- ♦ Cash Bar**
- ♦ D.J. & Dancing
- ♦ Optional Valet Parking-\$4.00

4440 W. John Carpenter Frwy.
(SE corner of Highway 114 and Esters
by the north entrance to DFW Airport.)

To be held
at: the



Sheraton Grand
HOTEL
AT DALLAS/FT. WORTH AIRPORT
www.sheraton.com



ORDER FORM FOR ONE TICKET
Singles Charity Extravaganza
July 30, 1995
Sheraton Grand Hotel

DALLAS CAN! ACADEMY



- Mr. PLEASE PRINT \$25 minimum contribution per ticket
 Ms. (tax deductible to the extent allowed by law and non-refundable)

Name _____

Address _____

City / State / Zip _____ Phone _____

Please complete one order form for each person attending and mail along with your contribution to:
Singles Charity Extravaganza
c/o Love For Kids
P.O. Box 835637
Richardson, TX 75083-5637

Do Not Send Cash

Make checks payable to: Love For Kids Amount Contributed \$ _____

Orders must be post-marked by July 10, 1995. Tickets are limited.*

I am unable to attend, but I am happy to support Love For Kids with the enclosed gift.

For ticket availability or further information call our **HOTLINE 426-LOVE**.

*Attendance strictly limited as required by fire code

**The Singles Charity Extravaganza is not responsible for the service, sale, or consumption of alcoholic beverages



ORDER FORM FOR ONE TICKET
Singles Charity Extravaganza
July 30, 1995
Sheraton Grand Hotel

DALLAS CAN! ACADEMY



- Mr. PLEASE PRINT \$25 minimum contribution per ticket
 Ms. (tax deductible to the extent allowed by law and non-refundable)

Name _____

Address _____

City / State / Zip _____ Phone _____

Please complete one order form for each person attending and mail along with your contribution to:
Singles Charity Extravaganza
c/o Love For Kids
P.O. Box 835637
Richardson, TX 75083-5637

Do Not Send Cash

Make checks payable to: Love For Kids Amount Contributed \$ _____

Orders must be post-marked by July 10, 1995. Tickets are limited.*

I am unable to attend, but I am happy to support Love For Kids with the enclosed gift.

For ticket availability or further information call our **HOTLINE 426-LOVE**.

*Attendance strictly limited as required by fire code

**The Singles Charity Extravaganza is not responsible for the service, sale, or consumption of alcoholic beverages