

MPI

MEETING PROFESSIONALS INTERNATIONAL®

Committed to Educational Leadership

CURRENT

Meeting Professionals International

October 1998

Dallas/Fort Worth Chapter

Local Panel Discusses 'Meal Planning with an Objective' at September Meeting



A panel of experts—from meeting planners to caterers to decorators—provided a buffet of ideas for carrying a theme into a meal function with table decorations and set-ups. Participants were Colleen Rickenbacher, CMP, (Dallas Convention & Visitors Bureau); Tom Beene (Silver Tray Catering); Melanie Hill (Majesty Hospitality Staffing, Inc.); Ken Thornton (Fun Factory Decorations & Special Events); and Angela Morgan (The Mansion on Turtle Creek).

In this issue

President's Message	3
Star of the Month	4
October Meeting Details	5
Education News	6
Last Month's Meeting	8
Government Affairs	11
"Grapevine" News	12
The MPI Kids Charity Ball '99	14

***Tired of
Standing in Line
to Register?!***



... Charge It!

**Credit Cards Now Accepted for
Monthly Meeting Registration**

see details on fax registration form

CURRENT MPI

MEETING PROFESSIONALS INTERNATIONAL®

Committed to Educational Leadership

Dallas/Fort Worth Chapter
4020 McEwen • Suite 105
Dallas Texas 75244
972-233-9107x1-674 • FAX 972-490-4219
judy@dondillon.com

Editor
Gracie Hatfield Hilton
The Write Stuff
metro 817-467-5449
gracie@eaze.net

Vice President Public Relations/Marketing
Marsha Singer
The Dallas Directory
214.823.4370

Director of Chapter Communications
and Managing Editor
Kristi Carter
J&S Audio Visual, Inc.
972.241.5444

Advertising Chair
Gregory Pynes
Hand & Associates Marketing Communications
214.696.9525

Photographer
VISTA Photographic & Video Group
972-380-0985

Regular Contributors and Writers
Mitchell Cathey
Palomino Euro Bistro • 214.999.1222

Delinda Dudley
Fun Factory • 972.271.7444

M.T. Hickman
Richland College • 972.238.6097

Pat McCain, CMP
Krisam Group • 972.458.8692

Dana Nickerson, CMP
Square One Productions • 214.343.8067

Colleen Rickenbacher, CMP
Dallas CVB • 214.571.1040

Ann Stetson
Le Meridien Hotel • 214.855.1735

Stephanie Schroeder
Starwood Hotels & Resorts • 972.238.1008

MISSION STATEMENT

Meeting Professionals International is the pivotal force in positioning meetings as a primary communication vehicle and a critical component of an organization's success. Meeting Professionals International leads the meetings industry by serving the diverse needs of all people with a direct interest in the outcome of meetings, educating and preparing members for both their changing roles and validating relevant knowledge and skills, as well as demonstrating a commitment to excellence in meetings.

The CURRENT is published 12 times yearly for the D/FW Chapter of Meeting Professionals International, the industry's leading educational and networking resource in meetings management. Statements of fact and opinion are the responsibility of individual writers and do not imply collective opinion of the officers or members of MPI. The CURRENT and MPI D/FW Board of Directors are not responsible for the content of advertisements. Any complaints concerning an ad should be directed to the advertiser.

Upcoming Chapter Meetings

October 22, Thursday
"The WOW Factor in
Enhancing Business Meetings"
Granada Theatre Prestonwood
11:30 a.m.

November 19, Thursday
"Art of Being Alive"
Fairmont Hotel
11:30 a.m.

December 17, Thursday
Holiday Party
Southfork Ranch
6:30 p.m.

January 28, Thursday
11:30 a.m.

February 25, Thursday
"So Re-Mi's—Life"
11:30 a.m.

March 25, Thursday
Radisson Plaza Hotel/Fort Worth
6:30 p.m.

April 22, Thursday
Monthly Meeting
"Magic of a Mighty Memory"
Harvey Hotel/Crowne Plaza

MPI

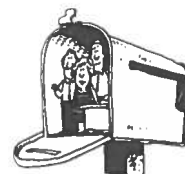
MEETING PROFESSIONALS INTERNATIONAL®

Committed to Educational Leadership

MPI International Headquarters
4455 LBJ Freeway • Suite 1200
Dallas, Texas 75244-5903
972-702-3000
FAX: 972-702-3070
<http://www.mpiweb.org>

New job? address? phone number? e-mail address?

Report those changes to the
MPI D/FW Chapter office
972-233-9107
and the
MPI International Headquarters
972-702-3000



Keep your records up to date!

ISSUE

DEADLINE

November
inserts due Nov. 4

Oct. 16, Friday

December
inserts due Dec. 2

Nov. 13, Friday

CURRENT Deadlines



E-mail copy (Microsoft Word 7/Windows attachment) to
gracie@eaze.net

President's Message

What a Difference Just a Few Hours Can Make!

If we could all donate just one day a year—or maybe just a few hours a year—to a good cause, wouldn't that make a big difference in our lives and in the way we feel about other people?!

Being involved in our chapter's community services projects offers that opportunity. We can pay back our community, neighborhood, fellow friends and families. Better yet, someone we don't even know could benefit from our philanthropy.



Colleen Rickenbacher,
CMP
Dallas CVB
D/FW Chapter President

MPI D/FW has always been strong in local support in the metroplex; now we are TEAMing with other associations in our area and becoming even stronger.

Vice President of PR/Marketing Marsha Singer and her TEAM have developed programs to make it easy for MPI D/FW Chapter members to help our community and those programs are already underway.

The Internal Community Services Committee, chaired by Stephanie Schroeder, participated in the AIDS Lifewalk Oct. 4.

Upcoming service opportunities include the •North Texas Food Bank Pumpkin Party on Saturday, October 24; •the November Visiting Nurses Association Toiletry Drive; and •the December Love for Kids Christmas Party at Circle R Ranch.

Delinda Dudley will chair the Partnering Community Services Committee which will involve other associations in our industry. I have asked the presidents of other associations to partner with MPI D/FW Chapter to work together on community projects. The response has been unbelievable and everyone is on board to lend a hand.

These associations include the local chapters of National Association of Catering Executives, International Special Events Society, International Association for Exposition Management, The Texas Chapter of the Association for Convention Operations Management and the Society of Government Meeting Professionals.

The two main partnering projects will be the *North Texas Food Bank Hunger Link* and *The Visiting Nurses Association Meals on Wheels*.

Some of our hotel member representatives actively participate in these programs but we need to get everyone involved.

On Thanksgiving morning we invite all members of local associations to join us, along with the VNA, to deliver Meals on Wheels to families that are less fortunate. Yes, it is Thanksgiving and it is a time that we spend with our families but what a wonderful way to start off your day and share with another family.

The North Texas Food Bank will be an ongoing project that will distribute donated food and grocery products to churches and other charitable organizations that feed the hungry in North Texas. The Food Bank supplies food leftover from conventions, events and restaurants to 274 client organizations in 13 counties. The program touches a lot of hearts and empty stomachs—approximately three million!

In this issue of the *CURRENT*, there is a form to fill out if you would like to become involved and serve Thanksgiving meals to families, become part of the North Texas Food Bank Hunger Link or get involved in other Community Services projects.

Please indicate on the form if your hotel, restaurant or company is already participating with the Hunger Link or other community services projects. We are excited for all of these projects to grow.

MPI

MEETING PROFESSIONALS INTERNATIONAL®
Committed to Educational Leadership

Meeting Professionals International is the world's largest association of meetings professionals with more than 14,500 members in 51 countries and 58 chapters and three clubs. MPI serves as the pivotal force in positioning meetings as a primary communication vehicle and a critical component of an organization's success. MPI leads the meeting industry by serving the diverse needs of members and nonmembers alike through its commitment to quality education, continuous improvement and excellence in meetings while upholding high ethical standards.

President

Colleen A. Rickenbacher, CMP
Dallas Convention & Visitors Bureau
214.571.1040

President-Elect

Steven G. Foster
Circle R Ranch
817.430.1561

Immediate Past President

Gregory Pynes
Hand & Associates Marketing Communications
214.770.1609

Vice President of Education

Peg Wolschon, CTP
Gray Line/Kerrville Bus/Coach USA
972.263.0294, #103

Vice President of Membership

Cindy M. Hamilton
Cityplace
214.841.6830

Vice President of Programs

Betty E. Garrett, CMP
Garrett Speakers International, Inc.
972.513.0054

Vice President of Administration

Linda Vest, CMP
State Farm Insurance
972.732.5970

Vice President of PR/Marketing

Marsha Singer
The Dallas Directory, Inc.
214.823.4370

Vice President of Finance

Melissa Parks, CMP
H.D. Vest Financial Services
972.870.6160

BOARD OF DIRECTORS

Cheryl L. Beasley, CMP
SABRE
817.963.2025

Randie Charnes
NCR Corp.
972.402.6091

Tony Cummins
Adam's Mark Hotel Dallas
214.922.0316

Delinda Dudley
Fun Factory Decorations & Special Events
972.271.7444

Cyndi Martinez, CMP
Independent

Tamara Quilty
MCI Performance Group
972.417.3204

Stephanie Schroeder
Starwood Hotels & Resorts
972.238.1008

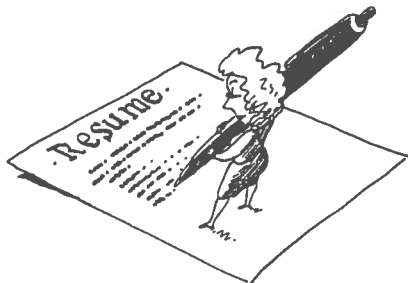
Tim Wade
Lennox Industries Inc
972.497.5039

**D/FW
Meetings
& Hospitality
Industry**

JOB BANK

**Voice Mail
972-381-5624**

**Find a Good Job!
Find a Good Employee!**

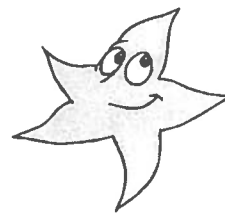


Features

- List of job openings with contact information
- Updated weekly
- Instructions about listing a job
- Leave a message for Job Bank committees of participating organizations
- Free for applicants

To volunteer for the Job Bank Committee, call
Elly Paulsen (Freeman Decorating)
(214) 267-5723 • fax (214) 634-2221
paulse@freemanco.com

**STAR
of the Month**



"Star of the Month" is a recognition program honoring chapter members for involvement in committees and special programs. All Stars of the Month are eligible for a special drawing for two educational scholarship awards to attend the MPI International Conference or other MPI educational opportunities.



Jennifer Feilke
The Trade Group

Since joining MPI in February, Jennifer Feilke (The Trade Group) has been the cornerstone of setting up the Chapter Resource Center prior to every chapter meeting. Her employer, The Trade Group, has supported Jennifer in her MPI activities by absorbing all the costs associated with several changes Jennifer has initiated. Jennifer currently serves on both the Public Relations/Marketing Committee and the Program Committee. She just recently added The Kids Charity Ball 1999 to her volunteer activities. Jennifer's participation, willingness, consistency, follow-up and can-do attitude have earned her the distinction of Star of the Month.



To nominate a Star of the Month, send a fax to Ann Stetson (Le Meridien Hotel), 214-855-1735.

**Second Annual
Texas
Education
Conference**

**MPI
TEC**

November 6-8
Saint Luis Resort and Conference Center
Galveston

MPI Hill Country
MPI Houston Area
MPI D/FW

"Ride the Wave to Success"

Join us for great educational programs, networking, and social events. Featured speakers will include Hattie Hill; Padi Selwyn, M.D.; Louise Upshaw-McClenny; Albert Spears; Robin Hunt, CMP; and Mike Philippovic.

\$85 for MPI members; \$125 for non members

Registration forms will be available soon.
Call Gregory Pynes at 214.770.1609 with questions.

October Focus: 'Enhancing Business Meetings'

By Steve Kemble
Steve Kemble Event Design

Are your corporate meetings lacking WOW! POW! WHAM?!

Then plan to attend the October 22 MPI/DFW chapter luncheon meeting at the Granada Theater Prestonwood in Addison.

Why you should attend

As planners and suppliers we all strive to have attendees at the many meetings and conferences we plan leave the meeting saying "WOW! That was GREAT!"

The first step to firing up the sales team or motivating all the employees in general is to start the meeting with a bang—and for this one we literally will!

What better environment to show you ways to dazzle and dazzle your attendees than in a theatre atmosphere—and we will do just that in the metroplex's newest venue for meetings and events—The Granada Theater Prestonwood, in Addison (directly across from Neiman-Marcus in Prestonwood Mall).

The content of a business meeting needs to be strong; yet the attention-getter—the part that must set the tone—is indisputably the start, the kick-off!

Program features

During the October program we will show you three dramatic ways to start your business meeting—an impressive pyrotechnics display; a fantastic audio-visual journey that would be sure to get your attendees' attention; and a meeting or event explosion of color—a complete song and dance extravaganza that would definitely jump start any business meeting with an abundance of energy!

Next, we're off to a wonderful buffet lunch catered by The Granada Theater Prestonwood, where we promise you more WOWs!

Make reservations now!

Make your reservations now, as this one is sure to be a sellout! You don't want your fellow MPI members saying to you, "WOW! you should have made your res-

WOW!

MPI

MEETING PROFESSIONALS INTERNATIONAL®
Committed to Educational Leadership

October MPI D/FW Chapter Meeting

"The WOW! Factor in Enhancing Business Meetings"

Sponsored by the San Antonio Convention and Visitors Bureau

Thursday, October 22

Granada Theater Prestonwood
15100 Prestonwood Blvd.
Dallas, Texas 75248
(214) 887-0856

11:00 a.m. Chapter Orientation
11:30 a.m. Registration & Reception
12:00 noon Lunch and Program

—Complimentary Parking—

R.S.V.P. to Judy
by noon, Tuesday, Oct. 20
Reservations rec'd after the deadline
will be placed on waiting list.
•FAX 972-490-4219 (see fax insert)
•judy@dondillon.com

Advance Registration \$24
Onsite Registration \$32
Guest Registration \$30

WOW!

ervations earlier....the wait list line is longer than the line was at the premiere of the movie Titanic!"

And our planners are....

Co-chairs for the October meeting are Courtney Crawford (The Granada Theaters) and Steve Kemble (Steve Kemble Event Design).

Other members of the Program Committee are Gregory Pynes (Hand & Associates Marketing Communications), Jay Cooper (Ducky-Bob's/Cannonball Party and Tent Rental Company), Catherine Frigo (Millenium Events), Debbie Meyers (BRAVO! Entertainment) and Linda Thornton (Fun Factory Decorations and Special Events).

Host at the Granada Theater Prestonwood is Courtney Crawford, vice president of marketing and special events.

October Host Facility Granada Theater Prestonwood

The Granada Theater Prestonwood, situated on the corner of Beltline and Prestonwood Boulevard (across from Neiman-Marcus in the Prestonwood Mall) is an "eatertainment" facility. Granada Movie Grill customers relax in swivel, reclining, contoured chairs in a grandly renovated theater, while waitstaff serve them from a full menu of delicious food and beverage.

The hidden value of the Granada is versatility. From wedding receptions to corporate training meetings, from football games on a 30-foot screen to concepts or computer presentations, the Granada can adapt to the client's need.

EDUCATION NEWS

WAW Educational Programs Creating the Framework of a Successful Event

By Fred Knieberg, CMP
Knieberg & Associates

The fall session of MPID/FW's "Walk A While" (WAW) program kicked off this month with a session on "meeting Planning" at MPI Headquarters.

"Walk a While in My Shoes" is the chapter's "hands on" educational series.

The 1998-99 program features eight interactive sessions in which participants will be involved in the entire process of developing, planning, and running an actual MPI special event, scheduled for June 1999.

This is your opportunity to get a hands-on experience working with veteran members on a "real" project and see it through to fruition. The cost is only \$15 per session (\$20 for non-members) or \$100 for all eight sessions. The "Smart Card" applies to this series.

The next WAW session on Nov. 10 will be a Convention and Visitors Bureau site inspection at Irving CVB. Other sessions will feature •Air and Ground Transportation, •Hotel, •Marketing/Promotion, •Event Planning/Speakers/Catering, •Setup/Pre-Convention/AV, and •Crisis Management/Disaster Recovery.

See details for upcoming meetings in the Educational Opportunities calendar on page 7.

Call Patty Stern (Five Star Limousines) at 972-234-5466 to enroll in this rewarding educational series.



Visit Meeting Professionals International at
<http://www.mpiweb.org>

Walk-A-While in My Shoes

1998-99 Series Now Underway!
Tuesdays, 6:00-8:00 p.m.



Get ready for a dynamic 1998-99 "Walk-A-While" (WAW) program. Mark your calendars for eight consecutive sessions of information, communication and fun!

next session:

Nov. 10

CVB/Site Inspection • Irving CVB

(Oct. 13)
Nov. 10
Dec. 8
Jan. 12
Feb. 9
March 9
April 13
May 11

for more information: Patty Stern (Five Star Limousines) 972-234-5466

More Education Bang for the Buck!

GET \$SMART!



The MPI Dallas/Fort Worth Chapter offers its members an exceptional bargain for a multitude of educational events for only \$75 each term. Members in good standing can also apply for a

JPA (Jan Pollard Award) Scholarship, and be reimbursed for the \$75 at the end of the term.

Attend a PO⁴D meeting; experience the 'Walk-a-While in My Shoes' programs; attend the CMP Study Groups and the CMP University programs; attend new educational opportunities such as the "Super Session." (Smart Card does not apply to monthly chapter meetings.)

Get Smart: For more details, call Lianne Pereira, 972-855-1676 or lpereira@komen.org—and let her do all the paperwork! You can also contact Leah Belasco at 972-392-4464—or purchase the new "Smart Card" by stopping by the Education Committee table at the chapter meeting.

SMART Card—Your Pass to Learning

SMART CARD valid through January 1999 (1st term); June 1999 (2nd term).
There is no limit to the number of chapter educational programs SMART CARD holders can attend.

EDUCATION NEWS



Educational Opportunities & Upcoming Industry Meetings at a glance

October 20, 26

November 2, 10

CMP Study Group Sessions
Hilton DFW Lakes Executive Conference Center
6:00 p.m. – 8:00 p.m.

\$45 fee

Contact: Mary Lynn Novelli, CMP
214-346-1886

October 23

TxACOM

Contact Shari Moore
Fax: 817-459-5089

October 26

CMP Examination Commitment Due

November 4-7

Society of Corporate Meeting Professionals
Adam's Mark Hotel
San Antonio, TX
Call: 404-355-9932

November 6-8

Texas Educational Conference
Galveston Island, TX
Contact: Dana Nickerson, CMP
214-343-8067
& Beverly O'Laughlin, CMP
214-265-3686

November 10

Walk-a-While

"CVBs and Site Selection & Inspection"
Local CVB – TBD
6:00 p.m. – 8:00 p.m.
\$15 members fee
Contact: Patty Stern
972-234-5466

November 21 & 22

CMP University
DFW Lakes Hilton Conference Center
\$125 fee
Contact: Mary Lynn Novelli, CMP
972-726-9800

November TBD

Super Session
"ECO Meetings"
Place: TBD

For more information about any of these educational opportunities call
Marti Fox, CTC (BTI Americas) 214-905-8550

Tips for Renewing CMP Certification

The CMP designation must be renewed every five years. Continuing education and involvement in the meetings industry is important to qualify for re-certification. Here are a few hints on what to do to prepare for your re-certification.

·Create a file for your CMP certification. Include any receipts for MPI monthly chapter meetings, check stubs, certificates of acknowledgment for committee work, awards, honors, etc. As you are involved in anything educational in the meetings industry, place some type of documentation in this file as you will need to provide this backup to qualify.

·Points for continuing education units add up quickly. A maximum of 10 points is allowed for continuing education and 10 for college degree programs.

·MPI monthly meetings offer points for meetings containing educational content related to meeting/hospitality management. Typically it's one point for each program hour.

·MPI workshops, conferences, and other educational offerings provide continuing education points. The same point system applies to HSMIA and other industry associations.

·Your published articles (national) relating to the meetings industry offer three points each.

·Earn points for leading an educational program: serving as a speaker (two

points) or as a panelist as part of a meetings industry related educational project or program (one point).

·Involvement in industry related associations including MPI. Committee involvement, leadership roles such as committee chairs, board of directors or president on both local and international levels adds to the point tally.

Don't lose precious time; start tracking today.

— Dana Nickerson, CMP
(Square One Productions)
MPI D/FW CMP Committee Co-Chair

Jan Pollard Award for Professional Growth

Hats off to Kristin McGrath of the New York Hard Rock Cafe for a \$500 donation to MPI D/FW's Jan Pollard Award for Personal Growth

To participate on the JPA committee, apply for scholarship funds, or donate prizes for monthly drawings, contact Gail Lemaire (Hotel Intercontinental Dallas), 972-789-3037.

When longtime D/FW MPI Chapter contributor and previous board member Jan Pollard died in February, MPI D/FW renamed the Professional Growth Award program—benefiting ongoing professional educational needs of chapter members—the Jan Pollard Award for Professional Growth.

Congratulations to New

CMPs!



New CMP designates from the MPI D/FW Chapter will be introduced at the October chapter meeting.

September Meeting Highlights

Meal Planning with an Objective' Focus of MPI D/FW Chapter Meeting at DoubleTree Lincoln Centre

Photos by

MPI D/FW members attending the September chapter meeting viewed tabletop displays constructed specifically to interpret the D/FW Chapter's 1998-99 "TEAM" theme. The displays were provided by D/FW area event specialists, decorator companies and caterers who demonstrated "how to carry a theme into a meal function with table decorations and set-ups" through their creations.



Bill Reed Decorations & Square One Productions



Abbey Rents



Designs Behind the Scenes



Gourmet Dallas



Ducky Bob's/Cannonball



Millennium Events and VIP Events



Gale Sliger Productions

Photos by VISTA





The September MPI D/FW Chapter meeting was sponsored by the Orlando/Orange County Convention and Visitors Bureau.



Hotel waitstaff welcomed attendees to the September meeting.



program personalities and recognitions

Hall of Fame

Please salute the following companies and individuals for their contributions to the September meeting at DoubleTree Lincoln Center.

Host

Lincoln DoubleTree Hotel
Michael Gongre
972-701-5133

WaiterWear

Orlando Theatrical Supply
Skip Stewart
407-895-5555

Centerpieces

Orlando/Orange Country CVB
Bill Hurst
407-363-5808

Panelists

Colleen Rickenbacher, CMP
Dallas Convention and Visitors Bureau
214-571-1040

Angela Morgan
The Mansion on Turtle Creek
214-559-2100

Tom Beene
Silver Tray Catering
972-423-8322

Melanie Hill
Majesty Hospitality Staffing, Inc
972-261-1164

Ken Thornton
Fun Factory Decorations and Special Events
972-271-7444

Tabletop Display Artists

Abbey Rents
Bill Reed Decorations & Square One Productions
Designs Behind the Scenes
Ducky Bob's/Cannonball
Gale Sliger Productions
Gourmet Dallas
Millennium Events with VIP Events

September Program Committee

Keith Hickman,
The Sixth Floor Museum at Dealey Plaza
Dana Nickerson, CMP
Square One Productions
Mitchell Cathey
Palomino Euro Bistro
Leah Belasco
Belasco Consulting.

The Future Promises Ways to Have More Productive Meetings.

We decided not to wait.



Research shows that the more successful meetings incorporate features offered at a variety of locations. We put them together at one place.

- **Anticipate meeting planner's needs**
Professional meeting staff, outstanding price/value, personal service, business center
- **Match the meeting venue to the needs**
18 meeting rooms, 1,000 capacity ballroom, amphitheater
- **Provide facilities conducive to success**
250 rooms, special Executive Floor, three restaurants, team-building course
- **Surround delegates with planned diversions**
Golf course, tropical pool/swim-up Cabana Bar, indoor/outdoor tennis, water sports

For information, site visit, call our Sales Department: (281) 334-1000
www.sshr.com e-mail: SSHRSales@ghg.net

Now in its 10th year of service to meeting planners.

 **South Shore Harbour
Resort & Conference Center**

2500 South Shore Boulevard • League City, Texas 77573

Between Houston and Galveston, across Clear Lake
from NASA/LBJ Space Center

Managed by Gal-Tex Hotel Corporation

MPI AND THE
AUSTIN JAYCEES INVITE
YOU TO BECOME A
LEGISLATOR FOR A DAY
AT A REGIONAL
GOVERNMENT AFFAIRS
SEMINAR



October 30 & 31, 1998
Austin, Texas

MPI
MEETING PROFESSIONALS INTERNATIONAL
Committed to Educational Leadership

 **AUSTIN
JAYCEES**

A 'Coup' for Texas, D/FW Chapter Oct. 30-31 MPI Regional Government Affairs Day Pilot Program for Country

By LeeAnn Harle

Renaissance Mtgs. & Incentives, Inc.
MPI D/FW Govt. Affairs Liaison

On Oct. 30-31, MPI's Government Affairs committee and the Austin Jaycees are producing a "Legislator for a Day" regional seminar in Austin, Texas.

This exciting event is being used as a pilot program for the rest of the United States, so it is a huge honor for Texas and the Dallas/Ft. Worth chapter to coordinate.

As participants work through the legislative process using a nationally recognized educational model of the Texas Legislature, they will play the roles of governor, lieutenant governor, speakers, senators, representatives, lobbyists, committee clerks, etc.

Participants will learn how to be more effective and influential on the state and local levels ("grass roots politicking").

Please plan to attend this interactive,

inaugural program. We need your involvement to make it a big success!

This highly informative, educational—and enjoyable!—event will provide the tools for understanding local legislative procedures and effectively impacting final outcomes.

Questions? Call LeeAnn Harle, 214.871.1191.

Thanksgiving Day Meals on Wheels

Help deliver Meals on Wheels with MPI, the Visiting Nurses Association and other industry associations.

You'll be home in time to get your turkey out of the oven and turn on the Cowboy game—that's a promise!



For more information:
Delinda Dudley

(Fun Factory Decorations & Special Events), 972-271-7444

Meeting Planning TIP

When planning a multiple day meeting don't be afraid to give your attendees a "free" night. It's a WIN-WIN! It gives attendees an opportunity to spend time with associates they may only see once a year, while greatly helping your bottom line.

—Steve Kemble
(Steve Kemble Event Design)

Legendary Event Excellence!



Star in your own award-winning event at Southfork! With over 63,000 square feet of indoor event and meeting space, we can help you direct events for 10 to 10,000. Creative event themes, full-service catering, along with decor and entertainment planning make us the perfect location for your next meeting or special event. Our cast of characters is famous. Our service is legendary. Let us make your next event a true "Dallas" production.

Southfork 20 years
R A N C H
DALLAS • TEXAS

P.O. Box 516009 • Dallas, TX 75251 • 972-442-7800 • FAX 972-442-5259

Carol Marks Music

& Entertainment Agency

We book bands committed to delivering outstanding professional performances for corporate & private engagements!

615 Business Pkwy • Richardson, TX 75081
972-231-4091
carolmarksmusic.com

North Texas Food Bank



PUMPKIN

PARTY

OCT. 24

10 A.M. - 4 P.M.

DALLAS FARMERS MARKET.

This annual fundraiser benefits the Food Bank, which supports young children and their needy families.



For more information:
Stephanie Schroeder
(Starwood Hotels & Resorts), 972-238-1008



M.T. Hickman
Richland College
'Grapevine' Columnist

Heard it through the Grapevine!



Mitchell Cathey
Palomino
'Grapevine' Columnist

The Hard Rock Cafe recently donated \$500 to MPI D/FW's Jan Pollard Award for Scholarship. The money was donated in the name of **Kristin McGrath**, Hard Rock Cafe-New York Sales Manager, recipient of the Hard Rock Cafe 1997 Sales Hero of the Year Award.

Elisa Davis, event manager with IBM global conference group was nominated for the Richardson YMCA's Woman of Achievement.

Sue Fry moved from Rough Creek Lodge in Glen Rose Texas, back to downtown Dallas to accept the position of sales and marketing director, Arcodoro/Pomodoro Restaurant.

Carmen Muphey, CMP, CAEM, is the new director of meetings for the Bowling Proprietors Association.

Ann Renneker is the associate director of catering and convention services, The

Fairmont Hotel Dallas. Her former position was senior sales manager Dallas Market Center.

Cecilia Rodrigues, formerly with the Hyatt D/FW was appointed business travel sales manager, Omni Mandalay Hotel.

Percy Sales accepted the position of senior events coordinator, Houghton Mifflin Company.

Keep up with personal news about fellow MPI chapter members—job changes, promotions, awards or special recognitions, weddings, or births—through "Heard it through the Grapevine."

Contact M.T. Hickman (Richland College) or Mitchell Cathey (Palomino Euro Bistro) about items of interest for this column. Hickman can be reached at 972-238-6097; fax 972-238-6333, or mthickman@dcccd.edu. Cathey can be reached at 214-999-1222; fax 214-999-1115.

Please submit photo ("head shot") with your news item.



Three New Crowne Plaza® Hotels Can Help Your Next Meeting Take Flight...And Get You 5,000 Bonus Airlines Miles!

First-class facilities:

We offer more than 48,000 square feet of fully updated meeting/banquet space including fully appointed conference rooms, exquisite ballrooms and a staff dedicated to your exact needs.

Miles for Meetings:

Book and hold a meeting at a new Dallas-area Crowne Plaza® hotel before December 31, 1998, occupy at least 15 rooms any one night during the event, and 5,000 bonus miles are yours!

The New Address
For The
Savvy Traveler.™

To get the most mileage for your next meeting, call one of the following locations:

Crowne Plaza Suites Dallas

(formerly Bristol Suites-Dallas)

7800 Alpha Road, Dallas Texas 75240

972-233-7600

\$5 Million
Renovation

Crowne Plaza Dallas Market Center

(formerly The Harvey Hotel-Dallas Brook Hollow)

7050 Stemmons Freeway, Dallas Texas 75247

214-630-8500

\$2.5 Million
Renovation

Crowne Plaza North Dallas/Addison

(formerly The Harvey Hotel-Addison)

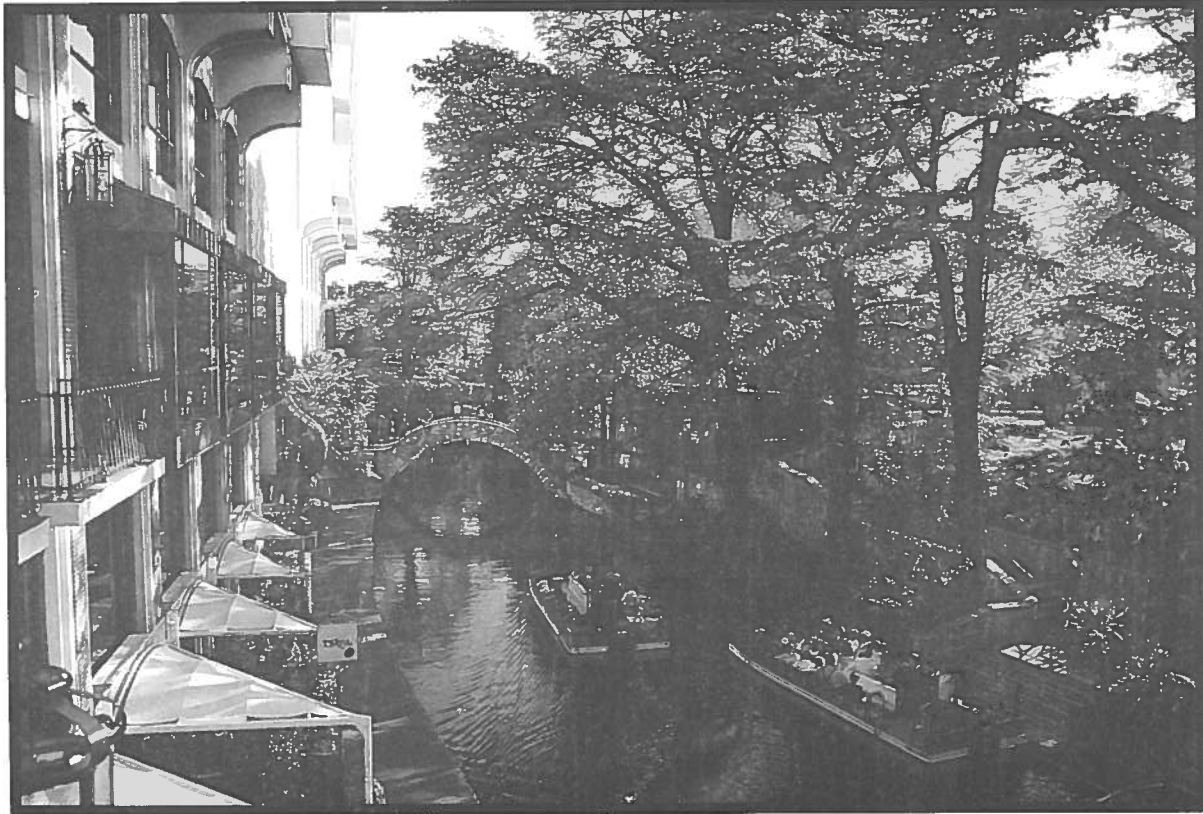
14515 Midway Road, Dallas Texas 75244

972-980-8877

\$10 Million
Renovation

Contact the hotels directly, or call toll free 1-800-2CROWNE
Independently owned by FalCor Lodging Limited Partnership and operated by Bristol Hotels & Resorts®

*B*ECAUSE WE'RE KNOWN FOR
OUR GRACIOUS PACE,



WE APOLOGIZE PROFUSELY FOR
STRESSING THE URGENCY TO ACT NOW.

We'd Like To Make Amends With Some Stellar Rates On Hotel Meeting Facilities.

We have some absolutely irresistible money-saving deals for your next high-powered corporate meeting in our wonderfully mellow and lovely city. But you must snap up this offer right now, before all the best dates and rates are taken. So go to our website: www.SanAntonioCVB.com/convent.htm to find special pre-millennium sale values on many of our finest resort and hotel accommodations—and an in-depth look at the many charms of San Antonio. Imagine lingering over dinner along our romantic River Walk. Relaxing with a round of golf on one of our world-class courses. Or browsing in one of our many intriguing shops. But enough reverie. Contact us now and book a meeting. Because this is not the time to chill out. You can do that after you get here.

PURE  **SAN ANTONIO**
www.SanAntonioCVB.com/convent.htm

San Antonio Convention & Visitors Bureau

P O Box 2277 • San Antonio, Tx. 78298-2277 • 1-800-447-3372 • TDD (210) 270-8706 • E-Mail: saconv@sanantoniocvb.com

The MPI Kids Charity Ball 1999 Volunteering for TMKCB Offers Many Valuable Benefits!

By Pat McCain, CMP
Krisam Hotels & Resorts

Enthusiasm is building for The MPI Kids Charity Ball 1999. The sub-committees are actively recruiting volunteers to be a part of a charity fundraiser that has contributed almost \$400,000 to local organizations over the past five years.



Pat McCain, CMP
Krisam Hotels & Resorts
Chair, 1999 TMKCB

Why should you get involved with TMKCB? Several reasons: •the wonderful feeling of accomplishment you will receive from being an integral part of helping “the kids;” •the valuable educational experience you will gain; and •the terrific people you will meet.

I’ve learned a lot about volunteerism through a number of MPI community service projects. The building of relationships through volunteerism is a special benefit derived from participation in a voluntary group. Learning from each other in such an environment promotes personal growth.

I have learned—and previous TMKCB chairs agree—that the ability to keep volunteers motivated is a very big part of the ball’s success. One of the keys to maintaining volunteer momentum is to follow up often and remember to show appreciation.

When we ask a volunteer to do something, it’s more like seeking support from a friend than asking an employee to do a specific task. When a leader shows genuine appreciation, people are more likely to increase their involvement and accomplish greater things. Feeling appreciated makes us all feel good about ourselves.

Alexandra Stoddard, in a collection of favorite quotes and reflections, has this to say about gratitude: “Whenever we thank someone, we become bigger people. When we acknowledge to another person that he or she has made a difference, we

are showing appreciation. Be in a continuous state of thanksgiving.”

I pledge to remember these words in the coming months and truly look forward to working with everyone on the The MPI Kids Charity Ball 1999 committee.

TMKCB 1999 Beneficiaries

The MPI Kids Charity Ball recently announced the beneficiaries for the 1999 ball: **Bryan’s House, Genesis Women’s Shelter, Love For Kids, and Wipe Out Kids’ Cancer.**

These four beneficiaries will each share equally in the net proceeds from the ball.

MPI D/FW will also continue to support (at 10% of the net proceeds) the **Richland Community College Travel, Tourism and Meeting Management Scholarship Fund.**



The MPI Kids Charity Ball

Produced by Meeting Professionals International
Dallas/Fort Worth Chapter

**TMKCB
Committee Meetings
Wednesdays, 6 p.m.**

October 14
Children’s Medical Center
Wipe Out Kids Cancer

November 11
Bryan’s House

December 9
Genesis Women’s Shelter

Each beneficiary will provide a facility tour and explain how TMKCB donations benefit their organizations.

To learn more about these organizations, please join us for these meetings.

Contact Pat McCain, CMP,
972.458.8692, for details.



**MPI Professional Education
Conference - North America**

**January 24-26, 1999
Vancouver, British Columbia**

**FOR REGISTRATION INFORMATION
CALL 1-972-702-3051 OR
VISIT MPIWEB.**

- * TWO DYNAMIC GENERAL SESSIONS
- * MORE THAN 70 WORKSHOPS
- * EXECUTIVE TRACK
- * TECHNOLOGY LABORATORY
- * UNIQUE NETWORKING OPPORTUNITIES
- * CHAPTERS OF THE YEAR & GLOBAL PARAGON AWARDS PRESENTATIONS

MPI

MEETING PROFESSIONALS INTERNATIONAL
Committed to Educational Leadership

4455 LBJ Freeway, Suite 1200 • Dallas, Texas 75244-5903
TEL: 972-702-3000 • FAX: 972-702-3070
MPI Website <http://www.mpiweb.org>



A UNIQUE TWIST ON GROUP THERAPY.



Be it a group of 25 or 1,000, our world-class horse racing facility is the place to entertain. We have options such as Box Seats, Penthouse Suites, landscaped outdoor areas and a trackside dining terrace, all of which are available for charitable events, social gatherings or corporate functions. It'll do more for your group's collective psyche than all the psychiatrists in Vienna. For more information about group entertainment, please call Mike McCoy.



LONE STAR PARK
at Grand Prairie

*North of I-30 on Belt Line,
for more information, call 972-263-RACE.*

MPI

MEETING PROFESSIONALS INTERNATIONAL®

Committed to Educational Leadership

Dallas/Fort Worth Chapter
4020 McEwen • Suite 105
Dallas Texas 75244

FIRST-CLASS MAIL
U.S. POSTAGE
PAID
DALLAS, TX
PERMIT NO. 1930

DALLAS/FORT WORTH CHAPTER

Del Lago, Texas' preferred conference destination, offers the perfect setting for your next meeting. Nestled among 300 acres of majestic pine and oak trees on 22,000-acre Lake Conroe, Del Lago features 60,000 sq. ft. of meeting and function space, a 21 story lakeside tower with 310 Texas-size suites, 45 golf course and lakeside villas, an 18 hole championship golf course, tennis, marina, fresh water beach, health spa and a challenging ropes course. Call us or visit us on the internet to find out more about Del Lago - your perfect place to Get Away & Get Ahead!

 **DEL LAGO™**
GOLF RESORT & CONFERENCE CENTER

Just North of Houston on Lake Conroe

1-800-DEL LAGO

600 Del Lago Blvd. Montgomery, Texas 77356-5349
www.dellago.com e-mail DellLago@DellLago.com



Get Away & Get Ahead. Del Lago!

Member
International Association
of Conference Centers



EXCLUSIVE
CHOICE
AWARDS



H.O.T.E.I. AWARDS
Facilities Magazine



PROFESSIONAL
TRAINING
SERVICES

Off the Wall!
Professional Training Services

**MPI DALLAS/FORT WORTH CHAPTER
AUGUST 1998 NEW MEMBERS**

Rhonda E. Aicklen **PO⁴D 1**
President
Austin Ad Group, Inc.
14330 Midway Road #100
Dallas, TX 75244
972/701-8616
972/701-0195 (fax)
Email: rhonda@austinadgroup.com

Scott D. Cook **PO⁴D 9**
Corporate Sales Manager
Arlington Hilton Hotel
2401 East Lamar Blvd.
Arlington, TX 76006
817/640-3322
817/652-0243 (fax)

Carol J. Barber **PO⁴D 4**
Meeting Planner
American College of Emergency Physicians
1125 Executive Circle
Irving, TX 75038
972/550-0911
972/580-2816 (fax)
Email: cbarber@acep.org

Joseph W. Cotter **PO⁴D 1**
Executive Vice President
Castle Hill Golf Corporation
4112 North Josey Lane #120-224
Carrollton, TX 75007
972/395-0630
972/395-3253 (fax)

Heather Barton **PO⁴D 5**
Event Marketing Manager
KPMG
200 Crescent Court #300
Dallas, TX 75201
214/758-8732
214/720-6827 (fax)
Email: hbarton@kpmg.com

Jim T. Delvecchio **PO⁴D 9**
Director of Sales
Game Works
3000 Grapevine Mills Parkway #525
Grapevine, TX 76051
972/539-6757
972/874-0387 (fax)
Email: jdelvecchio@gameworks.com

Vince D. Bogard, CMP **PO⁴D 7**
Sales Manager
Doubletree Hotel Campbell Centre
8250 North Central Expressway
Dallas, TX 75206
214/706-0116
214/706-0186 (fax)

Mary V. Dowling **PO⁴D 3**
Owner
Dowling & Associates
5336 Alpha Road #4
Dallas, TX 75240
972/387-2917
972/934-2842 (fax)
Email: dowlingm@swbell.net

Willia Renee Browning **PO⁴D 6**
Secretary
MacGuffin Management Inc.
2435 West Northwest Highway #101M
Dallas, TX 75220
214/956-9400
214/956-7870 (fax)

Machelle Gifford **PO⁴D 2**
Marketing Events Manager
EDS
5400 Legacy Drive MS B3-1D-21
Plano, TX 75024
972/604-7696
972/604-4419 (fax)
Email: machelle.gifford@eds.com

**MPI DALLAS/FORT WORTH CHAPTER
AUGUST 1998 NEW MEMBERS**

Miriam H. Jones **PO⁴D 5**
President
MHJ Consulting Inc.
3525 Turtle Creek Blvd. #12D
Dallas, TX 75219
214/522-0206
214/528-1377/(fax)

James E. Myers **PO⁴D 8**
Sales Manager
AVW Audio Visual, Inc.
2233 Irving Blvd.
Dallas, TX 75207
214/638-0024
214/638-0331 (fax)

Marshall J. Leak, III **PO⁴D 4**
Director of Sales
Andrews Media Service
3016 Skyway Circle S
Irving, TX 75038
972/570-1118
972/550-1353 (fax)
Email: mleak@andrews-media.com

Rhonda L. Newlin **PO⁴D 9**
Sales Manager
American Airlines Training & Conference Ctr
4501 Highway 360 South MD 929
Fort Worth, TX 76155
817/967-4580
817/967-4867 (fax)

Penelope H. Logan **PO⁴D 1**
Marketing Manager
American Heart Association
7272 Greenville Avenue
Dallas, TX 75234
214/706-1200
214/706-5233 (fax)

Mary P. Pettigrew **PO⁴D 4**
Catering Director
La Cima Club
5215 North O'Connor Road
Irving, TX 75039
972/869-2266
972/869-4590 (fax)

Jodie A. McLellan **PO⁴D 5**
Relationship Manager
S W Securities, Inc.
1201 Elm Street #3500
Dallas, TX 75270
214/672-6653
214/658-6026 (fax)
Email: jmclellan@swsst.com

Rhoda M. Schepker **PO⁴D 9**
Sales Executive
The Beach Club
3029 Midway Road
South Lake, TX 76092
817/329-1668
817/488-1405 (fax)

Mary C. Meador **PO⁴D 2**
Marketing Events Manager
EDS
5400 Legacy Drive MS B3-1D21
Plano, TX 75024
972/604-6211
972/604-4419 (fax)
Email: mary.meador@edu.com

Dorothy Taliaferro Weil **PO⁴D 6**
Owner
Harris Jones & Weil
25 Highland Park Village #100 355
Dallas, TX 75205
214/890-2943
214/739-1131 (fax)

Catherine Morello
Student
1903-A Colorado
Denton, TX 76205
940/484-5010
940/484-5010 (fax)

Thomas E. Yates **PO⁴D 5**
Assistant General Manager
Bello Mansion Culinaire International
2101 Ross Avenue
Dallas, TX 75201
214/220-7470
214/220-7465 (fax)