



CURRENT

DEFINING THE POWER OF MEETINGS™



Dallas/Forth Worth Chapter

September 2001

Chapter of the Year
1989 ★ 1990 ★ 1994 ★ 1996

Inside

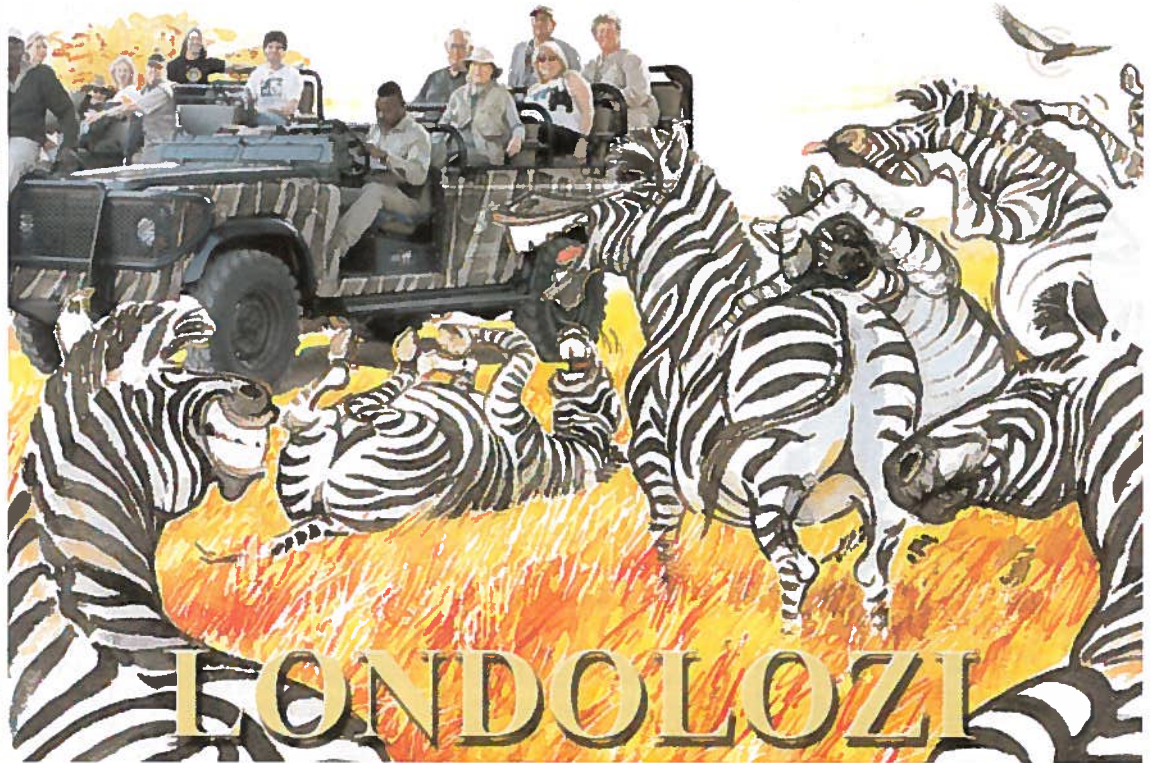
- President's Message 2
- Current Affairs 3
- Chapter Meeting 5
- Education 7
- CMP Calendar 7
- September Meeting 8
- Calendar Information 9
- Membership 11
- CMP Grapevine 13
- From the Heart 13

For more detailed
Information
 Log on to our
WEBSITE
www.mpidfw.org

A SAFARI DIARY

Chapter Members Explore Africa's Wonders

Photos and Story by Rich Fry



Editor's Note: MPI D/FW Member Bobby Bulger, president of Travel Concepts Inc., recently returned from hosting a 14-day South Africa excursion during July. Several other chapter members, including Sue Fry (Destination Dynamics Inc.), Marsha Singer (The Dallas Directory) and Eddie Heyland (Balloon City) were among those who participated. Rich Fry (Sue's husband) kept a photo diary of the trip. What follows are excerpts from his journals, which begin on the 8th day of the trip at the Londolozi Game Reserve.

On to Londolozi: Sue and I got up at 2:30 a.m. to catch a flight from Cape Town to Johannesburg. Then a second flight to Skukuza on a small 55-passenger propeller airplane followed by a third flight on a small 10-passenger plane to the Londolozi game reserve. We arrived about 3:00 p.m., had lunch and were then escorted to our "bush hut."

Since our bush hut is in the game reserve you are not allowed to walk outside at night without an escort. They say that wild animals come into the hotel area so he is there for our protection. Our

guide does not carry any weapon, not even a big stick, so I am not sure how he is going to protect us.

It is very cold in the morning and evenings (39 F - 4 C) but the temperature gets up to (75F -21C) in the afternoon. The safaris are done in "Land Rovers" and they drive right up to the animals. The first trip out we saw giraffes, zebras, lions, gazelle, and an assortment of birds. The trips out take about four hours so when we got home it was dinner time.

(Continued on page 10)



DEFINING THE POWER OF MEETINGS™

Meeting Professionals International is the world's largest association of meetings professionals with more than 18,000 members in 64 countries and 58 chapters and six clubs. MPI serves as the pivotal force in positioning meetings as a primary communication vehicle and a critical component of an organization's success. MPI leads the meeting industry by serving the diverse needs of members and non-members alike through its commitment to quality education, continuous improvement and excellence in meetings while upholding high ethical standards.

President

Betty E. Garrett, CMP
Garrett Speakers International, Inc.
972-513-0054

President-Elect

Cheryl L. Beasley, GMP
Sabre Inc.
817-931-7923

Immediate Past President

Steve W. Kemble
Steve Kemble Event Design
214-943-5949

Vice President of Education

Patty L. Stern-Markley
Dallas Meeting Management
972-233-8524

Vice President of Finance

Melissa S. Logar, CMP
PricewaterhouseCoopers LLP
972-724-2258

Vice President of Membership

Elizabeth S. Chandler
The Meadows Foundation
214-826-9431

Vice President of Programs

Anna Squire
Independent
972-712-8606

Vice President of PR/Marketing

Beverly D. O'Laughlin, CMP
Beverly O'Laughlin & Associates
972-985-1676

BOARD OF DIRECTORS

Director of Finance

Wendy Foster, CMP
Circle R Ranch
817-430-1561

Director of Programs

Erin Longley, CMP
Imagine Events
972-758-9355

Director of Website

Debbie Meyers, CSEP
BRAVO! Entertainment
972-939-2525

Director of Administration

Nicole Northrop, CMP
Omni Mandalay
972-869-5527

Sherry DeLaGarza, CMP
Society of Petroleum Engineers
972-952-9319

Dvorah A. Evans, CMP
Dallas Black Chamber of Commerce
214-421-5200

Tamra S. Hughston, CMP

The Meeting Planners
972-691-1335

Sandi Galloway
Canadian Tourism Commission
940-321-3458

A Message from the President



DALLAS/FORT WORTH CHAPTER



Betty E. Garrett, CMP
Garrett Speakers International
Chapter President

Would you believe over 117 chapter members from D/FW attended MPI's WEC conference in Las Vegas? D/FW members joined a total attendance over 3,248 at one of the finest networking opportunities in the meetings industry. In addition, chapter presidents meet two days before the actual starting of the conference. This gives us the opportunity of seeing what every chapter is doing especially the Big Ten. The theme this year was focused on communities and families and how we function as a community. Danny Glover gave insights as to how a director and a meeting professional orchestrate the various pieces into a harmonious working event. It takes everyone working together and staying connected to produce an exciting event. If you couldn't join us, please try to attend next year when the conference is held in Toronto, Canada, July 21-23, 2002 OR attend the PEC to be held in Honolulu, Hawaii, January 20-22, 2002!

Immediately following the WEC, your board had their first retreat, July 27-28th at The Guest Lodge in Dallas. It was a huge success. The Guest Lodge at Cooper Aerobics Clinic is one of the best-kept secrets in the Metroplex and they graciously hosted our entire retreat. The attention to guests is fabulous! Bethani Blair, Sales & Marketing Manager, did an outstanding job in catering to our every need. Tim Durkin with InsideOut Development facilitated the board in our strategic thinking process. Your board approved the 2001-2002 budget and is offering some exciting projects for this upcoming year. Most importantly to you, you have a dynamic team committed to your success and staying connected!

Back by request, February 2002's monthly meeting offers the annual Trade show in the capable hands of chairperson, Pat McCain, Krisam Group. Pat has some innovative ideas and is already putting her team together for this marvelous event. Our popular golf outing also returns next spring; details to follow. VP of Education, Patty Markley, is already up and running with some new hot topics for educational offerings. The Executive Dine Around Program and the program on surcharges have already received overwhelming responses. Be sure to stay connected because you do not want to miss anything.

Your award-winning Program Committee is helping us stay connected by inviting one of the local top chefs in the Metroplex to speak to us regarding the trends in the food and beverage arena. Chef Jim Severson, Sevy's Grill, is going to show us how to partner with the chef on site and marry creativity to the bottom line in planning meal functions. He is one of the more popular chefs who teaches classes at the Farmer's Market and has a following beyond belief. Chef Sevy is delightful and you are going to enjoy his informative session held at one of our favorite venues, Westin Galleria, September 27th. 🌐



"CURRENT" AFFAIRS

Scratch the Surface - Do Something

Editor's Note: Each month, this column will present an industry profile, hot topic debate or industry event review to focus reader interest and discussion on "Current" Affairs. Your participation and feedback in this effort is both vital and welcome. Take this opportunity to voice your opinion. Let me know what you think. -Steven G. Foster, CMP, Managing Editor.

Steven G. Foster, CMP
Managing Editor

An email from Chapter Historian O.D. O'Donnell prompted the following thoughts. O.D., as everyone knows, is the keeper of MPI D/FW's facts and figures. If they ever have a MPI category on "Jeopardy," bet the farm on O.D. Alex Trebek won't know what hit him.

When you've been involved in the chapter as long as O.D. has, you learn how things work" Just scratch the surface and you'll find many systems, procedures and tools available to help the chapter operate efficiently. Of course, to find the treasure you first have to "scratch."

By "scratch" I mean involvement, participation, engagement, interaction - choose the most appropriate noun. And the fact of the matter is this - almost HALF of our chapter members don't "scratch," not even just once. Take a look at this statistic provided by O.D.

D/FW MPI MONTHLY MEETING ATTENDANCE

As of June 30, 2001

# mtgs	1995-96	1996-97	1997-98	1998-99	1999-00	2000-01
0	297	336	336	380	326	439
1	121	124	105	135	167	200
2	67	62	75	99	103	90
3	40	47	56	47	66	65
4	36	37	50	37	52	50
5	34	34	30	35	28	43
6	22	31	23	23	26	34
7	16	24	24	22	26	13
8	8	10	22	14	17	17
9	9	8	19	9	7	8
10	4	13	9	12	8	4
11	2	7	6	6	7	1
12	8	5	8	5	4	7

NOTE: The chapter began the 1998-1999 administrative year with 780 members, 831 members in 1999-2000 and 803 members last year. Assuming the chapter maintains a consistent pattern again this year, it can be projected that 463 members that will not attend a single meeting. Since the 1995-1996 term, the chapter averages about 45% to 48% of our members not coming to a single meeting. Last year, 55% of the total membership never attended a single meeting.

Unlike comedian Dennis Miller, I DO want to get off on a rant here. How could 439 members never attend a single chapter meeting last year? WHAAAAATTTSSUP?

It's not like the chapter leadership hasn't consistently promoted a message of member involvement. Just look at the presidential themes for each of the year's listed above:

- 1995-96 President Phyllis Firebaugh, CMP:
"A Commitment to Excellence"
- 1996-97 President Mary Lynn Novelli, CMP:
"Focus on the Vision"
- 1997-98 President Gregory Pynes:
"Involvement Through Service"
- 1998-99 President Colleen Rickenbacher, CMP, CSEP:
"Together Everyone Achieves More"
- 1999-2000 President Steven G. Foster, CMP:
"Impact the Legacy"
- 2000-01 President Steve Kemble:
"ACTION!"

Current chapter president Betty E. Garrett, CMP has another powerful involvement call to arms - "Shape Your Future-Connect!" So my question is, what's it gonna take to get more participation from our members? Your thoughts are welcome.

Finally, while pondering the question of member involvement, I came across the Program Committee meeting evaluation from our chapter's Awards Gala in June. The form, distributed each month, asks attendees to rate everything from registration and function space to menu selection and educational content. There is even a request for recommendations on future meeting topics and venues. These responses are carefully collected, compiled and reviewed by both the Program Committee and Board of Directors at their respective monthly meetings.

Check out this comment, printed verbatim, from the Awards Gala evaluation:

"I feel it is always the same people recognized and given awards. There are so many people that work hard all year but are never recognized and I feel they should be awarded - not just the same group year after year."

First, let me say I disagree wholeheartedly with the comment. New faces appear on the awards gala stage each year - in 2001 there were 14 chapter members nominated for individual awards - and 10 were first-timers in their respective categories. Pretty good for an event which recognizes "lifetime contributions" to the chapter.

However, perhaps I might draw a parallel between attendance at chapter meetings and chapter recognition. To get recognition in any organization you have to DO SOMETHING.

Participating at monthly meetings is great way to start. 🌐

DALLAS/FT. WORTH
CHAPTER



REDEFINING THE POWER OF MEETING™

CURRENT

Dallas/Fort Worth Chapter Office
Dallas/Fort Worth Chapter
PMB 259
7750 North MacArthur Blvd.
Suite 120
Irving, TX 75063-7501
www.mpidfw.org

Chapter Administrator
Randie Charnes
(972) 869-3836
Fax: (972) 506-7485
rcharnes@msn.com

Vice President PR/Marketing
Beverly O'Laughlin, CMP
Beverly O'Laughlin & Associates Inc.
(972) 985-1676
beverlyolaughlin@aol.com

Managing Editor
Steven G. Foster, CMP
Circle R Ranch
(817) 430-1561
stevenfoster@circlerranch.org

Assistant Managing Editor
Alainna Palmer, CMP
Excel Communications, Inc.
214-863-8926
apalmer@excel.com

Newsletter Coordinator
Dana Conley
PDQ Results Printing
(972) 680-9410
pdq-results@prodigy.net

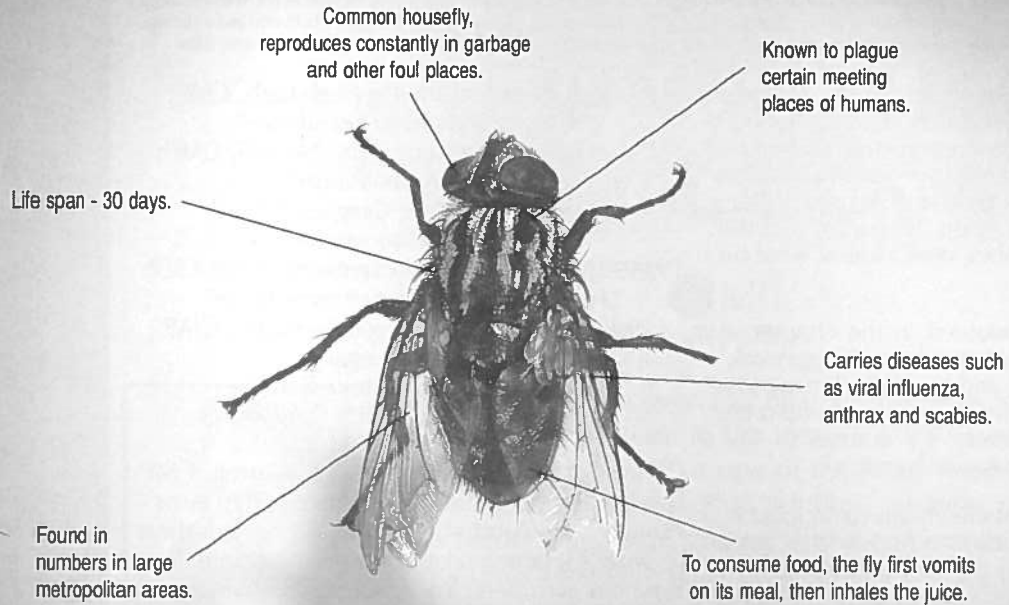
Advertising Chair
Cindy Provence
PDQ Results Printing
(214) 686-3121
pdq-results@prodigy.net

Contributing Writers:
Elizabeth Chandler, Meadows Foundation
Marti Fox, CMP, Global Goals
Erin Longley, CMP, Imagine Events
Pat McCain, CMP, Krisam Hotel & Resorts
Patty Stem Markley, Dallas Meeting Management
Dana Nickerson Rhoden, CMP, CMM,
American Heart Association
Alainna Palmer, CMP, Excel Communications
Percy Sales, Software Spectrum
Suzanne Silver, Hampton Inn West

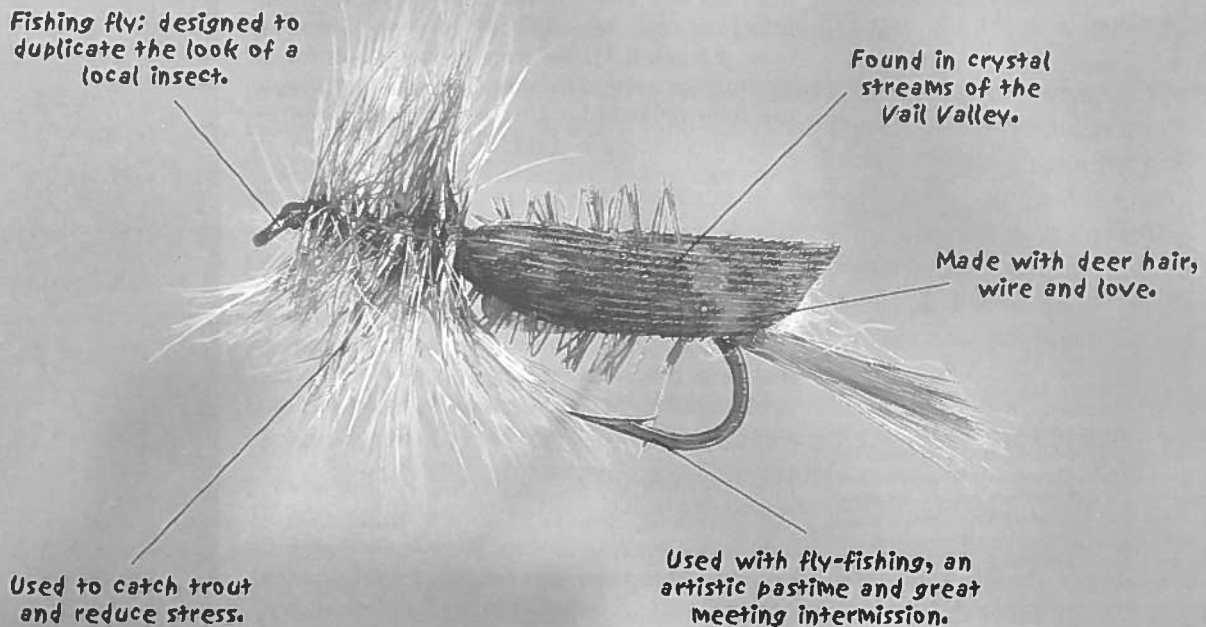
Photographer
Jim Woods
J Woods Custom Photography
(214) 395-5036
jwphoto@msn.com

MPI/DFW IS NOT RESPONSIBLE FOR THE CONTENT OF ARTICLES SUBMITTED FOR PUBLICATION. ALL ARTICLES ARE SUBJECT FOR EDITING AND/OR REJECTION BASED ON CON-

DIDN'T MEET IN VAIL.



DID MEET IN VAIL.



Vail, Colorado is different. Far from the noise and smog of most urban destinations, a trip to Vail can single-handedly rejuvenate your group. After your perfectly executed meeting, you'll be able to fly-fish, bike or hot air balloon to an entirely new perspective. Find out what hosting a meeting in Vail can do for you and your group. Visit www.vailalways.com or call 800-775-8245.



CHAPTER MEETING: THURSDAY, SEPTEMBER 27, 2001, 11:00AM

BE 'SAVVY' WITH 'SEVY' ON THE MOST CURRENT RESTAURANT TRENDS

by Carol Benavidez, CMP

HelmsBriscoe



Jim Severson & Jimmy Fell

Have you had to eliminate a trendy restaurant as a site for your meeting because it was too expensive? Would you like to learn tips on how to save costs at an upscale restaurant while improving the overall quality of your event? Then become restaurant 'SAVVY' with SEVY at our September MPI monthly meeting.

Jim Severson ("Sevy"), Executive Chef/Owner coupled with Jimmy Fell, General Manager/Owner of Sevy's Grill, will share their expertise and knowledge on the latest trends in the restaurant industry, as well as step you through all aspects of planning your meeting at a restaurant venue that will ensure a better return on your investment.

Jim Severson has 23 years of experience in the Food and Beverage Industry. At Sevy's, he is responsible for the overall management as well as the day-to-day operations of the kitchen, including food preparation and presentation. His focus over the years has been on two primary ingredients - great food and excellent service.

With 19 years in the restaurant business, Jimmy Fell is in charge of the operations at Sevy's as well as the daily management of the beverage service. He imparts his unbridled enthusiasm to the wait and restaurant staff as he trains them to deliver the highest level of service.

September program committee members are Peg Wolschon, CTP (Production Transport, Inc.), Deborah Comer (Independent), Carol Benavidez, CMP (HelmsBriscoe) and Jane Richards (The Tribute Golf Club). 🌐

Host Facility

The Westin Galleria Hotel

Located within the impressive Galleria, also referred to as "a city under glass," The Westin Galleria Dallas will be our host facility for this meeting. Offering instant access to more than 200 exclusive shops, two-dozen restaurants and endless entertainment options, the award-winning Westin is renowned for its luxurious guest rooms and for assisting in managing your travel needs.

Directions

From Downtown Dallas: Take the Dallas Tollway and head north. Exit onto Galleria Road/Dallas Parkway and turn right at the third light.

From West: Take I-635 East. Exit #22D (Dallas Parkway North) and veer to the right. Turn left at the second light onto Dallas Parkway. The hotel is on the right.

From South: Take I-45 or I-35E North and exit at 429JC (Dallas Tollway North). Exit at Galleria Road/Alpha Road. The hotel is on the northeast corner of the tollway.

From East: Take I-20 or I-30 West to I-635 West. Take Exit #22B onto Dallas Parkway North turning right off the exit.

September MPI D/FW Chapter Meeting

BE 'SAVVY' WITH 'SEVY' ON THE MOST CURRENT RESTAURANT TRENDS

Thursday, September 27, 2001

The Westin Galleria Dallas

13340 Dallas Parkway

Dallas, Texas 75240

972-450-2974

11:00 am: Chapter Orientation

11:00 am - 12:00 pm: Registration and Reception

12:00 am - 1:30 pm: Luncheon and Program

Complimentary Self Parking

Advanced Member Price: \$27.00

Advanced Guest Price: \$32.00

On-site Price: \$40.00

RSVP to: Randie Charnes

by: 2:00 pm on Monday, September 24, 2001

fax: 972- 506-7485

ON LINE REGISTRATION PREFERRED:

In the "Events" section at: www.mpidfw.org

email: rcharnes@msn.com



We're spending
\$25 million.
You get the change.

Change. Change. Change. \$25 million worth. This is what we are spending to transform the Southwest's most complete lakeside resort and conference center. With over 300 all-suite accommodations, a 60,000 square-foot dedicated conference center, an 18-hole championship golf course, a 300 slip marina, 11 tennis courts, a health spa, 2 pools, and a beautiful 22,000 acre lake, we are already pretty extraordinary. But change is happening and you get to keep it.

The true measure of meetings.



600 Del Lago Blvd.
Montgomery, TX 77356
tel 800.348.1542 • fax 936.582.4918
www.dellago.com

*Just 45 minutes north of Houston's
George Bush Intercontinental Airport.*



The Richland College TEMM Program: Yet Another MPI/DFW Chapter Contribution



Bill Boyd, CMP
Sunbelt Motivation
& Travel Inc.

Editor's Note: This second installation in a series of articles on the partnership between the MPI D/FW Chapter and Richland College focuses on the Travel, Exposition and Meeting Management course study. The TEMM program at Richland College began with a vision and one of its architects was former chapter president J. William Boyd, CMP. "The Current" asked Boyd to reflect on the beginnings of the TEMM program and its many successes throughout the years.

A productive relationship began in the early 1980s when MPI/DFW expanded its education program and chose Richland College for the location for its Continuing Education courses in meeting, travel and exposition management. Mainly, members of our chapter taught the courses. In 1992 a few industry leaders came together with the idea of formalizing these courses into a degree plan.

Two years later (and a ton of paperwork to satisfy the needs of the Texas Higher Education Coordinating Board), the Associate of Arts degree in Travel, Exposition and Meeting Management (TEMM) became a reality and was offered on the Fall 1994 schedule for the first time.

Through coordination with the Dallas Independent School District's Travel and Tourism program, we identified students who wanted to pursue a career within our industry. The benefits of the program for these mainly minority students were numerous and the program grew as a result. In 1997, M.T. Hickman, CMP, and MPI/DFW chapter member, became the TEMM program coordinator. Working closely with the Advisory Board, she helped the program grow.

While enrollment varies each year, the recent average per semester has been around 200 students. We began graduating our first students in 1996 with 9. In 1997 we graduated 7; 1998, 12; 1999, 10; 2000, 15; and in 2001 we graduated 12. Our students have been employed within our community very successfully and many have already been promoted to higher positions. Some of our students are even continuing their degrees in the hospitality field by attending four-year colleges. And, as an added benefit, with every graduating class we are improving the diversity of our professional workforce.

A 24-member Advisory Board made up of a representation of all our industry segments oversees the Degree Program. For example, on the Board are representatives from airlines, hotels, DMCs, travel agencies, convention and

visitor bureaus, special event venues, incentive companies, and airline reservation systems to name a few. The Advisory Board has had four chairs in its seven-year history, and all have been past Presidents of the MPI/DFW Chapter! The Board not only oversees the curriculum for the program to make sure it stays current with the changing needs of our industry, but also is responsible for good industry relations and for "spreading the word" within the local area high schools of the existence of the program. To this end we initiated the MPI/DFW Scholarship Program several years ago to assist those students who would otherwise not be able to attend college.

The MPI/DFW Chapter, through the auspices of the Kid's Charity Ball, provides the all-important funding for this scholarship program. We have awarded over 25 scholarships since the program's inception and some of the graduates who are now employed in our local industry were recipients of these scholarships.

Thanks in a very large part to the MPI/DFW Chapter and all its members who support the Kid's Charity Ball, the Travel, Exposition and Meeting Management Associate Degree Program at Richland College thrives. In fact, last year the program received an "Exemplary Rating" from the Texas Higher Education Coordinating Board. It is extremely rare that a program this young would ever receive such an honor. In writing about the evaluation, the Coordinating Board observed that the program receives a very high degree of support from the local industry (that's you, folks; pat yourselves on the back!). The TEMM program is now one of the top-rated degree programs at Richland College.

From all of us on the Advisory Board and from all the teachers who give of their time to educate our students, thank you for all your support, and please keep up the good work. Your efforts are making a difference in the lives of many young persons who want to be a part of our industry. 🌐

2001-2002 CMP Study Group Calendar

September 10, 2001:
CMP Application deadline
www.conventionindustry.org

January 5, 6, & 12, 2002
CMP University

September 10, 2001 - October 29, 2001
Monday Nights: 6:00 pm - 8:30 pm
Dallas Marriott - Las Colinas
CMP Study Group session
Cost: \$55 members
\$75 non-members

Exam Dress Rehearsal
Omni Mandalay Hotel
Jan. 5: 9:00 am - 4:30 pm
Jan. 6: 9:00 am - 12:30 pm
Jan. 12: 9:00 am - 12:00 pm
Cost: \$125 members
\$150 non-members

Note: The CMP Study group will not be held on Monday, Oct. 8 in observance of the Columbus Day Holiday.

January 19, 2002
CMP Exam in Dallas & Hawaii
www.conventionindustry.org

November 1, 2001
Dallas Marriott - Las Colinas
CMP Independent Study Group session

For further information on the CMP Study Group Sessions, contact: Marti Fox, CTC, CMP.
Day: 972-417-7232
Evening: 972-418-9776,
Fax: 972-418-9486
E-mail: MfoxWTMI@aol.com

November 12, 2001
Deadline for CMP Exam Form
Enclose \$325.00 fee to CIC
www.conventionindustry.org

EDUCATION PROGRAM REMINDER!

SITE SELECTION

It's Not A Black & White Issue!

You still have time to register!

Go to www.mpidfw.org and register under Events!

DATE: Tuesday, September 25, 2001
LOCATION: Wyndham Anatole Hotel
Time: Registration & Breakfast; 7:45am-8:30am
Program: 8:30am-11:30am
Cost: \$40.00 Members \$45.00 Guests

Learn why Site Selection companies are a valuable asset for both Planners and Suppliers! Learn how to use different resources that can help you do more and save money on the bottom line! Learn the dynamics of how Planners select and work with outsourced companies!

CREATE BUYING POWER!

PROTECT YOUR DEPARTMENT!

SAVE TIME AND MONEY!

August Meeting Chapter Partners

Please salute the following companies and individuals for their contributions to the meeting.

Host Facility

III Forks
Pamela Landgraf,
National Director of Sales
Rick Stein, General Manager
Dale Wamstad, Restaurateur
Gene Street, Restaurateur
Chris Vogeli, Executive Chef

Speakers

Frank Catalano
Catalano Consulting
John Chang
seeUthere.com

Audio/Visual Services

Bill Reeser, CMP, CTS
AVW Audio Visual, Inc.

Photography

Jim Woods
JWoods Photography

Jane Richards
The Tribute Golf Club

Speakers' Hotel Accommodations

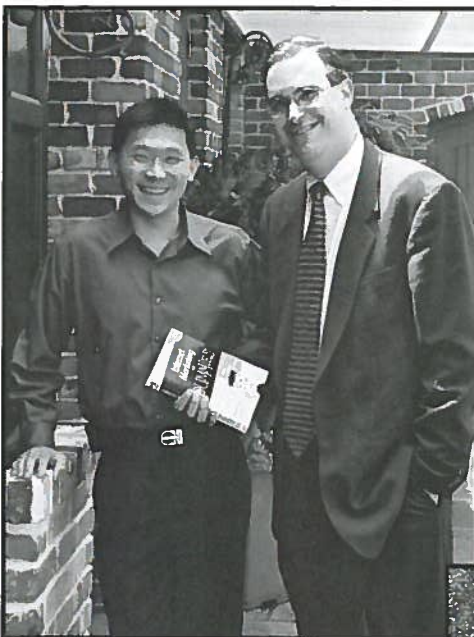
Shawna Luetkenhaus,
Director of Sales
Doubletree Hotel
and Conference Center

August Program Committee

Leah Belasco
Kelly Services
Peg Wolschon, CTP
Production Transport, Inc.
Larry Lawson
The Gary Musick Production Company
Jane Richards
The Tribute Golf Club

Chapter Members Log on and Chat with "Internet Marketing" Gurus @ III Forks

"Internet Marketing for Dummies" author Frank Catalano and seeUthere CEO John Chang were the speakers for the September meeting at III Forks. Attendees accessed the experts' database on the use of email marketing, web sites and other internet components to boost event attendance, increase revenues and ROI, and solicit better feedback. III Forks is owned and operated by Dallas restauranteurs Dale Wamstad and Gene Street.



Internet Marketing experts John Chang, CEO of seeUthere.com and Frank Catalano, author of "Internet Marketing for Dummies," were the guests speakers at the August Chapter Meeting.



August Program Hosts from III Forks were General Manager Rick Stein, Chef Chris Vogeli and National Sales Director Pamela Landgraf.



August Program Committee Members Bill Reeser, CMP (AVW Audio Visual Inc.), Leah Belasco (Kelly Services), Larry Lawson (Gray Musick Production Company), Peg Wolschon CTP (Production Transport, Inc.) and Jane Richards (The Tribute).



Community Services Committee Chair Suzanne Silver (Hampton Inn-West End), left, organized a chapter drive to support the "Shoes for Orphan Souls" program sponsored by Buckner Orphan Care.



(Photos by Jim Woods)

Advancing Women



MPI D/FW 2001-2002

Women's Leadership Initiatives

Dana Nickerson-Rhoden,
CMP, CMM

American Heart Association

MPI's New Women's Leadership Initiative will focus on research, program development and outreach efforts to help women advance their careers. The DFW Chapter has adopted this as a significant connection in our growth. This is a non-political committee dedicated to the personal and professional empowerment of women in the meetings industry. Women make up over 75% of the meetings industry yet very few are in leadership roles. A committee is forming now to develop programs that will be produced throughout the coming year with special guest speakers and the hot topics that affect women and how they can develop both professionally and personally.

Our Mission:

- * To assist individuals seeking career advice in the form of counsel, direction or knowledge that is suited to their specific professional needs and aspirations.
- * To offer expert advice from consultants and professionals in the meetings industry.
- * To give MPI members and guests the opportunity to empower each other by offering mentoring and providing information on professional issues of concern.
- * To create opportunities for networking and mentoring.
- * To create an avenue for advancing knowledge and intelligence related to professional and personal issues.
- * To provide education in health, finance, spirit, career and personal development for both personal and professional advancement.

Although this impacts women, this is not for women only. Men hire women, work with them as clients, employees or bosses. We are asking both men and women to get involved. Leadership skills are important to develop to move forward in our industry. The various topics we will address help to develop those leadership skills. We will address hot topics that impact women. Topics range from health and fitness issues to personal challenges, finance, and professional growth. Programming will include workshops on self-esteem, public speaking, balance, violence, image, etiquette, and much more. Get involved and learn to become the best leader you can be. Contact chairperson, Dana Nickerson Rhoden, CMP, CMM for more information at 214-706-1420 or dana.nickerson@heart.org.

MPI/DFW Calendar Information

SEPTEMBER 2001

9/15/2001	6:00pm-12:00am	MPI DFW Kids Charity Ball	Int. Apparel Mart Great Hall
9/20/2001	5:30pm-6:30pm	Program Committee Meeting	Westin Galleria
9/25/2001	5:30pm-6:30pm	Community Service Committee	Doubletree Lincoln Centre
9/25/2001	7:30am-11:30am	Site Selection Program	Wyndham Anatole Hotel
9/26/2001	5:45pm-7:00pm	Board of Directors Meeting	TBD
9/27/2001	11:00am-1:30pm	Monthly Chapter Meeting	Westin Galleria

OCTOBER 2001

10/9/2001	TBD	P/R-Marketing Committee	TBD
10/9/2001	TBD	Membership Committee	TBD
10/10/2001	TBD	Education Committee	TBD
10/18/2001	5:30pm-6:30pm	Program Committee	Renaissance North Dallas
10/24/2001	5:45pm-7:00pm	Board of Directors Meeting	TBD
10/25/2001	7:30am-10:00am	Monthly Chapter Meeting	Renaissance North Dallas
10/30/2001	5:30pm-6:30pm	Community Service Committee	Doubletree Lincoln Centre

NOVEMBER 2001

11/8/2001	5:30pm-6:30pm	Program Committee	Embassy Suites - Bass Pro
11/13/2001	TBD	P/R-Marketing Committee	TBD
11/13/2001	TBD	Membership Committee	TBD
11/14/2001	TBD	Education Committee	TBD
11/14/2001	5:45pm-7:00pm	Board of Directors Meeting	TBD
11/15/2001	11:00am-1:30pm	Monthly Chapter Meeting	Embassy Suites Bass Pro
11/27/2001	5:30pm-6:30pm	Community Service Committee	Doubletree Lincoln Centre

Meeting Contact Information:

Board of Directors: Betty E, Garrett, CMP @ betty@garrettspeakers.com
 Monthly Chapter Meeting/Program Committee: Anna Squire

@ asquire@worldnet.att.net

Community Services: Suzanne Silver @ ssilver@hamptondallas.com

CMP Study Group: Marti Fox, CMP @ MfoxWTMI@aol.com

Membership Committee: Elizabeth Chandler @ Echandler@MFI.ORG.

PR/Marketing Committee: Beverly O'Laughlin, CMP

@ beverlyolaughlin@aol.com

Education Committee: Patty Stern-Markley

@ patty@dallasmeetingmanagement.com

MPI Kids Charity Ball: www.mpidfw.org (Events Section)



TECH TALK

DLP vs. LCD Projection

Digital light processing (DLP), the newest technology in video projection, is making it's move into the audiovisual rental and staging market challenging liquid crystal display (LCD) projection systems in meetings applications. Which is the right technology for you?

LCD projectors offer a dramatic price advantage while providing a more than adequate light output level for most applications. Plus, you can stack the projectors and double the light output at a price that's still comparable to DLP. This also allows you to have an on-line back-up projector should technical difficulties occur with one of the projectors.

The main advantage of DLP projection is the higher image-quality it provides. LCD advocates argue that the average viewer can't differentiate the difference in image-quality. Although in side-by-side comparisons, the difference is quite noticeable. This difference makes DLP especially attractive in large-venue applications.

In summary, you can't have everything with one or the other projector. It is up to you, the savvy planner, along with your audiovisual professional to decide which is most appropriate for your meeting. 🌐

A SAFARI DIARY: *from page 1*

They have a huge fire in a sandy area called a boma and serve a buffet dinner.

The Safari: Two drives today - one in the morning and one in the afternoon. We just drove into a herd of Water Buffalo that were just walking along eating the grass. You could just reach out and touch one as they lumbered by. We continued the day finding Leopard, Rhinoceros, Hippos, elephants, and crocodiles.

Another wonderful cocktail party in the bush about half way through the drive followed by dinner outside by the fire in the "Boma." Sue and I decided to take one final drive in the morning to look for Cheetahs then off to Sun City for two days of gambling

City of Pleasure: A flight on a small ten passenger plane to Skukuza. A second flight on a small 55 passenger propeller airplane to Johannesburg then a two-hour bus ride to Sun City "City of Pleasure." Eddy Heyland got his wallet and travelers check stolen at Johannesburg. We think it happened during baggage transfer. The traveler's checks can be recovered, but the cash will be lost. The dinner tonight will be in the "City of Pleasure."

Sunday is a day of rest. After brunch, we played in the Casino. The room is very nice, but the "City of Pleasure" is very gaudy like Las Vegas. We leave at 4 am tomorrow for Victoria Falls.

(Continued on page 16)

Winner - ISES Esprit Award 2000
"Best Entertainment Production"

Go with a Winner because Event Entertainment is more than bands!

Cirque

Celebrities

Custom Shows

Characters

Bravo!
entertainment

www.bravo4u.com
 972-939-2525

MPI D/FW 2001 Rising Star: Dvorah A. Evans, CMP



Dvorah Evans, CMP
Dallas Black
Chamber of Commerce

Dvorah Annette Evans, CMP currently serves as the Director of Conventions & Tourism for the Dallas Black Chamber of Commerce, which at 75 years and nearly 2,000 members is the oldest and largest Black chamber in the nation. In this capacity, Dvorah is responsible for the marketing and promotion of the City of Dallas as a major convention & tourism city for African American associations and tourists.

In 1994, Dvorah successfully launched the chamber's Convention & Tourism Department that would focus on increasing the economic and business opportunities created by conventions for chamber members and the local community.

Dvorah was born on August 14, 1969 in Dallas, Texas. She majored in Political Science at Prairie View A&M University.

1. What would you do if you were not in the meetings industry?

I would love to be an attorney, which is why I majored in Political Science in college. After all, I have so many lawyer qualities, I am detail-oriented, I love to argue and I have taken extensive acting classes!

2. What do you like BEST and WORST about your job?

What I like BEST about my job is the fact that I'm in a fun and ever-changing industry that affords me the chance to travel and meet interesting people. I also love the fact that on a daily basis; I have the opportunity to give back to the community where I grew up and am able to feel as if I am truly making a difference.

What I like WORST about my job is that I wear about 4 different hats (secretary, sales, services & meeting planner) and it really takes a toll on your personal relationships. So much of my job involves traveling and when I'm not traveling; I am usually working from sun-up to sun-down and many weekends. I rarely get to spend quality time with my friends and family and that is really tough because I honestly believe that is the most important thing in life!

3. What is something people don't know about you?

Although I'm a very outgoing individual, I am also very shy. I can easily feel uncomfortable in new situations and surroundings and it takes me time to adapt. Most people only see me in certain settings so they don't believe that about me, but it's true. However, once I get comfortable...WATCH OUT!

4. What do you like to do in your free time?

I love to watch old movies; I mean OLD, black & white movies. Two of my favorites are "Stage Door" with Katherine Hepburn, Lucille Ball and Ginger Rogers and "Orchestra Wives" which was one of the last movies made with Glenn Miller before his death. As is the case with many people in this industry, I travel so much that when I'm at home, I don't want to go anywhere!

5. What is your favorite vacation and/or travel spot?

Martha's Vineyard!!! I'm not a big "crowd" person so I usually try to visit after peak vacation time and stay off the beaten path. My favorite place to stay is Lambert's Cove in the town of West Tisbury. It's an absolutely beautiful bed & breakfast secluded in the country and surrounded by huge pine trees, gardens and apple orchards.

6. What advice would you offer to someone starting out in this business?

Find a mentor! As someone who knows first-hand the perils of being tossed in the deep end of the pool without a life vest, I can attest to the valued importance of utilizing industry knowledge and expertise. It is crucial to have close contact with someone who has been in the industry for sometime and can provide guidance to help nurture you to your full potential. 🌐

To contact Dvorah, call (214) 421-5200
or email: dae@dbcc.org

New Kids on the Block

Welcome To Our Newest Members!



Larry S. Barnaby, *Speed Zone*
James D. Caldwell, *Omni Hotels*
Stephanie J. Fleming, *Lexus International Inc*
James R. Hardman, *Adam's Mark Hotel Dallas*
John S. Harrington, *StoneLeigh Hotel*
Stephanie E. Hopper, *SPAR Performance Group*
Tony Jeary, *Mr. Presentation TM*
Kelly S. Lafrance, *Wyndham Jade*
Betty F. Manning-Hardman, *Interstate Batteries*
Suzanne M. May, *Events Marketing*
Melanie J. Miller, *Executive Meeting & Incentive*
Talal Mumith, *American Limos & Transportation*
Patricia A. Palacios, *HelmsBriscoe*
Amanda K. Roeder, *KPMG LLP*
Allen Steadham, *International Size Acceptance Assn*
Adrienne Vaught, *Aurum Technology Inc*
Erin L. Vester, *Southwest Airlines*
Mary Beth Whitled, *Advo Care International*
Jose M. Zamora, *South Shore Harbour Resort & Conference Center*

JUMP-START YOUR NETWORKING AT CHAPTER ORIENTATION!

Are you new to the chapter, been out of touch for a while, or just interested in linking with other chapter members? The monthly meeting Chapter Orientation is the place to jump-start your networking and get the most of the event. Come to the meeting 30 minutes early and join us at the orientation session where you'll:

- * Be given an overview of the chapter and international association
- * Be given a list of committee involvement opportunities
- * Meet with others who share the same interests and goals
- * Meet one-on-one with some of the who's who of the chapter

Whether you're a planner or supplier, in senior management or an industry rookie, come invest 30 minutes of your time and begin making the most of your MPI membership! If you request, we'll connect you with a "seasoned" chapter member who will assist you in meeting others during the reception and meeting. If interested in being connected, or if you'd like to volunteer to connect, please contact Sherri Pederson, Cecilia Daddio, CMP or Elizabeth Chandler, VP Membership. **SEE YOU THERE!**



Don't miss this last opportunity for exotic trips, fabulous entertainment and the cutest costumed teddy bears ALL in one room! It's all at the 2001 MPI Kids Charity Ball!

Join us on Saturday, Sept. 15, 2001, 6:30 p.m., at the International Apparel Mart Great Hall for this year's gala, themed Masquerade "Helping to Unmask the Future". Collectible teddy bears (the Kids Charity Ball Mascot) will be costumed by celebrity designers and offered during the silent auction.

The MPI Kids Charity Ball

Produced by Meeting Professionals International
Dallas/Fort Worth Chapter

Produced by the Meeting Professionals International Dallas/Fort Worth Chapter and presented by Sabre Inc. (returning for the third-consecutive year as the event's "Guardian Angel Sponsor"), The 2001 Kids Charity Ball expects to raise more than \$80,000 for this year's beneficiaries: Love for Kids, Wipe Out Kids Cancer, AIDS Arms and the MPI D/FW Education Fund. The MPI Kids Charity Ball has distributed more than \$450,000 to children's charities and causes in its nine-year history.

The MPI-D/FW Chapter is pleased to announce that the Meadows Foundation has been selected as the winner of the 2001 Barrett Award! The Meadows Foundation was established in 1948 to assist people and institutions of Texas improve the quality and circumstances of life for themselves and future generations. The Barrett Award for Loving Kids was established in 1996 in honor of Bill and Angela Barrett for their efforts and long-standing contributions to underprivileged and medically fragile children. The award recognizes those who champion the causes of children through philanthropy and volunteer efforts as exemplified by Bill and Angela Barrett.

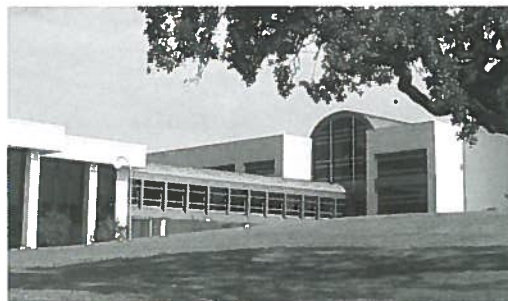
The ball is open to the public. Tickets are \$100 per person, tables of 10 are \$900, and Corporate Sponsorship opportunities begin at \$1,500. For ticket information or sponsorship opportunities, call the Kids Charity Ball Hotline at 972.377.8335 or check our website at www.mpidfw.org and click Events.

SOMETIMES YOU JUST NEED TO BE AWAY FROM THE OFFICE.

Whether it's a company-wide training session or an intensive overnight planning retreat for the management team, the American Airlines Training & Conference Center is the perfect destination for your meeting and conference needs.

multimedia needs, from the simple to the complex. And with Dolce International's all-inclusive **Complete Meeting Package** pricing and superior customer service, we guarantee a cost-effective, meaningful experience your team will remember.

Located near DFW Airport, we can help your team conveniently get away from the distractions of everyday office life and focus on the business at hand. Our state-of-the-art facilities and technical resources can accommodate your group's interactive and



For more information on how we can make your next event a success, contact Chad Enloe, Director of Sales & Marketing, at 817-931-2865, via e-mail at chad.enloe@aa.com, or visit our Web site at dolce.com today!



AmericanAirlines®
Training & Conference Center

a DOLCE Conference Destination™

Focus. Learn. Succeed.

4501 Highway 360 South MD 929
Fort Worth, Texas 76155





Heard it through the Grapevine!

Alaina Palmer, CMP
Highwire

Steve Kemble with *Steve Kemble Event Design* is making headlines again! He was named ISES Pinnacle Member of the Year by the Dallas Chapter of ISES at their annual awards gala. The award is presented to an individual based upon their contributions and exemplifying the goals and values of ISES. And, if that weren't enough, *Steve Kemble Event Design* was named Best Event Production of the Year at the NACE National Conference in Palm Springs during the National Awards Gala. A disco themed event featuring the Commodores captured the headlines! See Special Event magazine's July 2001 issue which highlights this event. Fabulous!

Ann Marie Taylor has accepted a position with *MPI Headquarters*. She was formerly with *Dr. Pepper/7-Up*.

Brenda Miller, CMP was recently engaged. Congratulations!

Susan Moore with Brookhaven Country Club recently married Jonathan Rich on May 6th. She's decided to go by Susan Rich (as she is not "More Rich" - as she puts it).

M. T. Hickman, CMP, CTP with *Richland College* was nominated for the Excellence in Teaching award at the college. This is a coveted award and we are proud of her!

Paula Mize-Kelley with the Apartment Association of Greater Dallas and her husband, Tim have been blessed with their first child, a baby boy! His name is Cooper James and was born on April 12th, weighing 6 pounds, 9 ounces and 18" long. Congratulations!

Mary Beth Whitted has left the *Wyndham Arlington Hotel* and has joined *AdvoCare International* as event manager.

Our deepest sympathy and condolences go out to Linda Thornton, CMP with *Fun Factory*. Her father recently passed away. We wish her family peace and blessings.

Jeff Means, CMP has rejoined the meetings industry after taking a year off to help start an Internet e-Learning company called 24/7 University. Jeff has joined *Royal Meetings & Incentives* as national sales manager.

Yours truly (Alaina Palmer, CMP) is leaving *Excel Communications* in September. I will be opening a Dallas-based office for *Highwire*, an advertising specialty product and promotions company based out of California, beginning September 17th.

To submit your "gossip", please contact
Alaina Palmer, CMP - Highwire — panda@bigplanet.com (temporary)

MARK YOUR CALENDAR NOW!!
the 13th annual



PARTYFEST 2001

Thursday, September 20th, 2001

World Trade Center—Dallas

2050 Stemmons Frwy. @ Market Ctr. Blvd.

11:00am—6:00pm

FREE TO MPI D/FW MEMBERS

Who Attends?

Corporate Meeting Planners, Event Producers, Fund Raisers, Wedding Planners, Total Party Planners & everyone who plans a party or special event in the D/FW area

Who Exhibits?

Over 200 exhibitors including Caterers, Interactive Games, Entertainers, Party Facilities, Restaurants, Decoration & Party Suppliers, Limo's, AV, Photographers and many more.

Speakers & Seminars...

Betty Garrett, CMP—Garrett Speakers International

Steven Foster, CMP—Circle R Ranch

and others...

for more info...

Applause Productions (214) 652-4300 or
www.applauseproductions.com

Sponsored by MPI D/FW, DCVB, Dallas Business Journal,
Downtown Business News, KERA, DMC



From the Heart



Suzanne Silver
Hampton Inn-West End

Komen Race
Saturday
October, 20th

Here's a great opportunity to participate in the largest race in Texas, help raise money to fight breast cancer—the leading cause of death in women aged 40 to 59 - and show that we're "Making a Difference Together". The MPI D/FW Chapter Community Service Committee is organizing a Team of runners and walkers for the 2001 Komen Dallas Race for the Cure. Bright and early, rain or shine, an estimated 40,000 participants will converge at North Park Center on Saturday, October 20, for the 19th annual event.

At least 10 people are needed to launch our Team. Please email Event Chair Lora Brandis at lora@rainmakeradv.com or call at 214-827-0770 for more information. Your \$20.00 entry fee includes an official 2001 Race-T-shirt (higher levels of support are also available). If you'd like to participate as a non-running/non-walking team member, there are plenty of volunteer opportunities available...just ask!

The Team registration deadline is September 28. Please join us in fighting a disease that will affect 1 out of 9 women in their lifetime. Race T-shirts and bib numbers will be distributed the week prior to the Race.

Bring a friend, get some exercise and have some fun! 🌍



Sabre, for the **third** year in a row,
is **proud** to be the
Guardian Angel **sponsor**
of The MPI Kids Charity Ball

Sabre employees are excited about working with **Love for Kids**
on technology education initiatives.

Sabre

www.sabre.com

One Great Center ... Getting Better.

For all your special events.

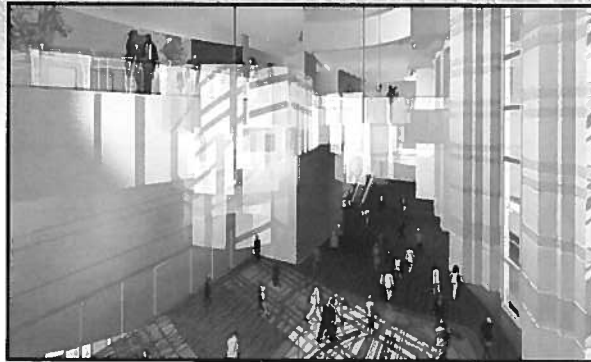
Fort Worth Convention Center You're Going to Like the Way We Look.

From the spacious and inviting grand lobby to a 30,000 square-foot ballroom, the Fort Worth Convention Center will be an architectural delight. And visitors from around the world will enjoy the special touches incorporating the city's western heritage.

With more than 37,500 square feet of meeting rooms, 227,000 square feet of exhibit space, and a 13,500 seat arena, the Convention Center will provide the perfect venue for all of your special events.

Phase I completion, including the ballroom, is scheduled to open in Spring 2002 with the final phase ready for use in the first quarter of 2003. Reserve your space today in the new and exciting Fort Worth Convention Center.

For booking information, call 817-570-2222.



It's One Great Center That's Going to Dazzle You.

FORT WORTH
Texas

IF YOU THINK BUSINESS HAS NO PLACE IN A RESORT, THINK AGAIN.



With its magnificent Gulfside setting, The San Luis Resort, recipient of the AAA Four Diamond Award®, Successful Meeting's Pinnacle Award and Meeting News Planners' Choice Award, has long enjoyed a reputation of The Premier Resort & Conference Center on the Texas Gulf Coast. But that's just one side of the story.

For beyond the beaches and sea breezes lies a world of advanced conference capabilities to rival the nation's best. With more than 40,000 square feet of high tech conference space, state-of-the-art communications technology, and award-winning staff of service-savvy professionals to ensure your meeting's success.

We invite you to look at business from a whole new point of view...overlooking Galveston's spectacular beachfront. Call today to discover the unique blend of hardworking conference facilities and relaxing resort amenities that is The San Luis.

Call Today To Book Your Next Meeting: (800) 445-0090
or Laurie Shaw at our Dallas Regional Office (972) 712-9936

MEMBER
INTERNATIONAL ASSOCIATION
OF CONFERENCE CENTERS



THE SAN LUIS RESORT

SPA & CONFERENCE CENTER

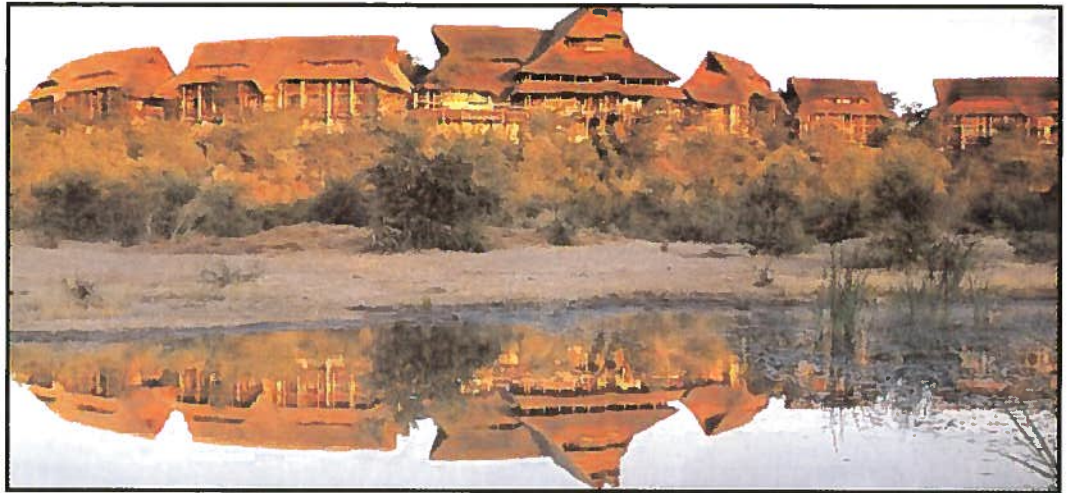
53rd & Seawall Blvd. • Galveston Island, Texas

www.sanluisresort.com

A SAFARI DIARY: *from page 10*

Zambezi River Cruise: On the bus to Johannesburg at 4:30 a.m. and then on 9:30 am flight to Victoria falls. We arrive at noon to the "Safari Lodge," a little more rustic than anywhere we have stayed. You have to sleep under mosquito netting, no heat (brrrrrr), no television or radio, no phone.

A beautiful view from our patio of the bush where there is a continuous parade of wild animals. It makes the above so unimportant. After a "Buffalo Burger," fries, and two ice cold beers for lunch, we went to the "Crocodile Farm." It was interesting, but seeing the animals in captivity is not the same as looking at them from my balcony.



The evening was great with a two-hour cocktail cruise up the Zambezi River followed by dinner. Tomorrow the falls!

Victoria Falls: First thing today Sue and I canoed up the Zambezi river. Our rower was a barefoot African boy named Etilla. As he propelled down the river, he explained things on the river. Sue and I kept our eyes peeled for crocodiles and hippopotamuses. We did see Hippos, and when we got to the island, the crew cooked us our breakfast over an open fire.

After our canoe journey, Sue and I went to the falls. I am not even going to try and describe their beauty. You view the falls from the other side directly across.

Eating Mopani Worms: Dinner was in the Boma (outside eating place). The food in here wasn't very good. The tour director challenged Sue and me to eat one of their local treats, a "Mopani Worm." It was pretty gross with all the little feet, but Sue and I stepped up to the challenge.

Our Last Day: During our last breakfast in Africa, a monkey jumped down from the rafters and



Mopani Worm Recipe:

Caterpillars are prepared for eating by squeezing out the gut contents before they are fried in their own body fat or boiled in a little water. The caterpillars are often dried so that they can be stored for use throughout the year. Dried caterpillars may be eaten dry like biltong or rehydrated and cooked in a little water before they are fried in oil with onion and tomato. They may be served with pap (Maize Meal Porridge), onion, tomato gravy and atchar (chili sauce).



stole a banana from the fruit bowl in front of Sue, then zipped back into the rafters. On the way to the airport we took a tour of a real African village and school. It was so amazing how they live with so little.

Final Note from Marsha Singer: This trip could not have been possible without the hard work and dedication of many people. To Bobby Bulger with Travel Concepts who worked for over two years on organizing this trip for us, thank you. And, to our tour company, United Touring Company: Janet Shafer in Philadelphia who put it all together; Pieter de Haas and Michele Wright as well as John Mason, our tour guide and Rayno Snyman, our bus driver in Cape Town; Anna-Christian and Peter in Johannesburg and Londolosi; Portia Kandemiri and Grace Mupawaenda and our bus driver, Dave in Zimbabwe - thank you for the trip of a lifetime. We hope you see many more of us over there very soon. 🌍