

MPI-WISCONSIN CHAPTER

Agenda

SEP
OCT
VOL 44/NUM 5
2022



Top Performing
CHAPTER AWARD



WISCONSIN
CHAPTER

“MPI-WI Chapter is the bridge to knowledge, compelling ideas, and relationships to create a voice in the meetings and events industry.”

TWO PROPERTIES, ENDLESS POSSIBILITIES

Book your meeting at The Madison Concourse Hotel or The Ingleside Hotel!



THE MADISON CONCOURSE HOTEL

AND GOVERNOR'S CLUB

You can do a lot with 27,000 square feet of meeting space. **The Madison Concourse Hotel and Governor's Club** is the largest convention hotel in Madison. The modern, flexible space is perfect for everything from large conventions to small strategic planning sessions, and it's located in the heart of downtown Madison, steps from dozens of shops, restaurants and entertainment venues.

1 W Dayton St, Madison WI • 800 356 8293 • concoursehotel.com



With over 40,000 square feet of meeting space, 20 private event venues, and 40 breezy outdoor acres, **The Ingleside Hotel** offers a refreshing change of pace from conventional destinations. Come experience Lake Country hospitality at its natural, vibrant best. Plan your next event in the flexible, unique space and enjoy an inspirational setting unlike any other in the Milwaukee area.



THE
INGLESIDE
HOTEL

2810 Golf Rd, Pewaukee WI • 800 247 6640 • theinglesidehotel.com

MPI-WISCONSIN
2022-2023
BOARD OF DIRECTORS

PRESIDENT
REBECCA STAATS
Residence Inn & Fairfield by Marriott Eau Claire
rebecca.l.staats@gmail.com

PRESIDENT-ELECT
REGGIE DRISCOLL, CMP
State Bar of Wisconsin
rdriscoll@wisbar.org

IMMEDIATE PAST PRESIDENT
SHANNON TIMMERMAN, CMP
Wilderness Hotel & Golf Resort
stimmerman@wildernessresort.com

VICE PRESIDENT OF MEMBERSHIP
SARA BEUTHIEN
WEDC
sara.beuthien@wedc.org

VICE PRESIDENT OF FINANCE
WANDA GILLES
veda
wanda.gilles@yahoo.com

VICE PRESIDENT OF COMMUNICATIONS
LIZ UNRUH
Positively Pewaukee
liz@positivelypewaukee.com

VICE PRESIDENT OF EDUCATION
BETH SCHNABEL, CMP
Filene Research Institute
beths@filene.org

DIRECTOR OF SPECIAL EDUCATION PROJECTS
ELIZABETH POH
La Crosse Center
epoh@lacrossecenter.com

DIRECTOR OF SPECIAL EVENTS
ED BUCHNER
Majic Productions
ebuchner@majicpro.com

DIRECTOR OF STRATEGIC PARTNERS & SPONSORSHIPS
SHERRY WOLFF
American Club Resort Hotel
sherry.wolff@kohler.com

DIRECTOR OF MEMBER CARE
JODY ROOS
Wisconsin Bankers Association
roos@wisbank.com

DIRECTOR OF AWARDS, SCHOLARSHIPS & RECRUITMENT
FARRAH SLINGER
Event Essentials
farrah@eventessentials.com

DIRECTOR OF PUBLICATIONS & SOCIAL RESPONSIBILITY
KORTNEE CARROLL
Kalahari Resorts
kocarroll@kalahariresorts.com

DIRECTOR OF DIGITAL COMMUNICATIONS
JESSICA RIEFLIN
Wisconsin Dells VCB
jessica@wisdells.com

DIRECTOR OF MONTHLY PROGRAMMING
LINDSEY HESS, CMP
Wisconsin Cheesemakers Association
lhess@wischeesemakers.org

MPI-WISCONSIN CHAPTER
Agenda

SEPTEMBER/OCTOBER 2022
VOL 44 / NUM 5

Feature Articles

Bidding for Good	7
Community Outreach: Women & Girls Fund of Waukesha County	7
Gala Preview from a 'First Timers' Perspective	9
MPI-WI Chapter Announces 2021-2022 Award Winners	12
September Event Preview	15
Food for Thought: September Event	16
October Event Preview	17
Food for Thought: October Event	18
We are Putting the Grand in Lake Geneva!	19
Summer Social at Serendipity Labs	21

In Every Issue

Editor's Note	4
President's Message	6
Volunteer Spotlight: Ann Marie Hess & Tamara Jesswein, CMP, VEMM	22
Anniversaries / New Members	23
Board Member Profile: Lindsey Hess, CMP	25
Supplier Profile: Matthew Bosen	27
Who's in the News	28
Planner Profile: Carrie Wunderlich	29
Save the Date: 2022 Chapter Events	31

Experience MPI Wisconsin

Print: *Agenda* Magazine

Web: mpiweb.org/Wisconsin

Facebook: facebook.com/mpiwi

Twitter: twitter.com/mpiwisconsin

LinkedIn: MPI-WI Chapter

Instagram: https://instagram.com/mpi_wi_chapter

6 Different Ways



WISCONSIN
CHAPTER

2820 Walton Commons, Ste 103

Madison, WI 53718

tel: 608.204.9816

fax: 608.204.9818

email: admin@mpiwi.org

web: www.mpiweb.org/wisconsin

Published bimonthly by
Meeting Professionals International –
Wisconsin Chapter

EDITOR

Jennifer Mell, CMP
Travel Leaders Corporate
jmell@tlcorporate.com

CONTRIBUTING WRITERS

Danniel Kaczoroski
Alison Hutchinson
Tamara Jesswein, CMP, VEMM
Shannon Timmerman, CMP
Kortnee Carroll
Jennifer Mell, CMP
Rebecca Staats
Ed Buchner
Lindsey Hess
Matthew Bosen
Carrie Wunderlich

GRAPHIC DESIGN

Ann Shultz, AJS Designs

PUBLICATION DEADLINES

November/December 2022
Deadline: October 15, 2022

January/February 2023
Deadline: December 15, 2022

March/April 2023
Deadline: February 15, 2023

PERMISSIONS

Material in this publication may not be reproduced in any form without permission. Statements of fact and opinion within the **Agenda** are the responsibility of the author(s) and do not imply an opinion of the officers or members of MPI or MPI-Wisconsin Chapter.

Editor's Note



“Fall” into MPI!

How is it possibly the end of summer already?!?

Even though my kids are now adults, I still look at fall as the time of year to get back into routines...including back into the swing of attending MPI-WI events! As Rebecca mentions in her President's Message, the chapter has a full event schedule for us this fall with a September

education event, a BREAKFAST education event in October and then Great Lakes Education Summit in Lake Geneva in November! Be sure to check out the articles about each event further in this issue for more details. On top of our events, some of you will also be attending IMEX in the middle of that schedule making it a busy time of year in our industry.

Also happening during this time of year is the online application process for MPI International Committee volunteers. [Click here](#) for more information like timelines (applications can start being submitted September 26) and the various committees. If you haven't served on an International Committee before (or even if you have), I encourage you to apply to join. This is a great way to give back to the global MPI community with minimal commitment. Most committees meet virtually once per month with shared tasks to work on between the meetings. That's totally do-able! And for those interested in resume building, what a great opportunity to add to your resume...MPI International Committee member!

On a personal note, don't forget about routines in your personal life this fall. Maybe it's daily meditation, a commitment to increased water intake, reading an actual book before bed each night or joining so many other chapter members in a running routine. Whatever your routine of choice, I encourage you to find something just for yourself for the rest of the year to keep your body/mind/soul in shape.

Lastly, enjoy this issue with the recap of one of our favorite chapter events, the Annual Awards Gala. I love re-living the night by looking through all the great photos and the smiling faces of those I love spending time with. Congratulations to all the award winners and many thanks to those who were able to attend and celebrate our chapter! ▲



When a team of San Francisco-based software gurus shared their holiday wish for a winter wonderland, we had a vision: welcome party guests to a 372,000-cubic-foot, real-life indoor snow globe scene, complete with fresh-cut, moonlit pines.

Then add falling snow.

Let us orchestrate *your* incredible.
Connect with us at MononaTerrace.com

Madison, WI

MONONA  TERRACE

© 2023 Monona Terrace



Back to table of contents



President's Message



**MPI-WI Chapter President
Rebecca Staats**

Hello MPI Wisconsin Members,

I am still basking in the afterglow of such a successful in person special event, our Golden Gala, which was held August 11 at the Hilton Appleton Paper Valley. I wish to extend a great big thank you to our host property – you blew us away with your imagination. It was extremely special for me as the new President of this amazing association. The setting & food were spectacular and it was wonderful to gather as a community to celebrate our successes the past year; it truly was GOLDEN. Thank you to all who attended, to all who helped plan, to all of our well-deserved award winners and to all who sponsored & donated. And in case you haven't heard, the Golden Gala was our highest attended event in two years -- and I am ridiculously excited to see our attendance continue to grow at future events.

In my previous President's message, I mentioned that our focus for MPI Wisconsin in the 2022-2023 is growth and one of the ways we plan to achieve that is by offering more time to socialize and network at our education events. Our September and October teams are working with our hosts and have some fun social components to begin promoting & marketing, so please keep your eyes peeled for more information on those.

I encourage you to make attending MPI-WI events a priority & block your calendars now. We'll have education events at The Ingleside Hotel in Pewaukee on Sep 22 with Speaker Mimi Brown and at the Doubletree by Hilton Milwaukee Brookfield Oct 20 with Speaker Ann Kerian. And take advantage of early bird pricing and register now for our regional conference, Great Lakes Education Summit, which will take place Nov 13-15 at the Grand Geneva Resort & Spa. This is our 8th annual GLES and is hosted and organized jointly by the MPI chapters of Indiana, Michigan and Wisconsin. This year Wisconsin is the "host state" and if you have never attended GLES, this is our biggest regional MPI education event of the year complete with certified education, networking opportunities along with personal development for Event Professionals and Suppliers alike. I hear there is going to be an 80's themed ski party reception, so dig out your leg warmers and aqua net hairspray, it's going to be, like, totally gnarly!

I would also like to share with the membership that our Board of Directors recently reviewed our end of year financials and everyone needs to pat themselves on the back & say congratulations on a great financial year! We held a full calendar of in-person events with quality education, engaged all of our members and while we anticipated a deficit, we were able to contain costs and lessen the deficit to about one-quarter of what we budgeted. This Chapter has such amazing support and I couldn't be more proud.

I want to leave by saying THANK YOU to all of our leaders, volunteers, sponsors and Strategic Alliance partners. Without your continued support, we would not be where we are right now. Your time and dedication to our Chapter is always valued. I look forward to seeing you soon. ▲

A handwritten signature in black ink, appearing to read 'Rebecca Staats', written in a cursive style.





In Search Of Volunteers & Donations For Bidding For Good

Items donated will go on the MPI-WI Bidding for Good Website. We will use our auction website, bidder email system and refer-a-friend features to promote our event and expand our outreach beyond our community. We will also activate social media buttons on our auction site, so our supporters can help spread the word. Our auction is poised for this November, and we will encourage everyone to talk up the site as a way to purchase some unique Christmas gifts... all donated by you! What fabulous exposure for you!

Please email admin@mpiwi.org if you would like to join the Bidding for Good Team or if you would like to donate an item. ▾



WOMEN & GIRLS FUND OF WAUKESHA COUNTY

Community Outreach

At our October Education Day (October 20th), we will be giving back to The Women and Girls Fund of Waukesha County. We ask that you bring purses (new or gently used), planners (undated), and fun colored pens that the women can use to their journey to a better future.

The Women and Girls Fund of Waukesha County seeks to aid and enrich the lives of women and girls so they ultimately become thriving residents of their communities. The WGF is dedicated to advancing the health, well-being, education and empowerment of women and girls.

Please consider donating:

- New or gently used purses
- Undated planners
- Fun colored pens



Get Meetings *Going!*



RECONNECT IN THE FOX CITIES

Ready to lead the charge back to in-person meetings and events? Plan with confidence by partnering with the Fox Cities Convention & Visitors Bureau.

Now offering incentives starting at \$500 for events booked and held in the Fox Cities.



Visit foxcities.org/get-meetings-going or contact our Group Sales Managers for more information.



Back to table of contents





AMAZING MEETING SPACES AND THE SERVICE TO MATCH

No matter how impressive a room is, your meeting experience will never reach its potential without the staff to back it up. From finding you the perfect space to making sure your meeting runs smoothly and giving your team a chance to unwind when things wrap up, accommodation is in everything we do.

Let us help with your next meeting.



Part of Wilderness Resort...America's Largest Waterpark Resort! WildernessResort.com | 800-867-9453 (WILD)

Back to table of contents



GALA PREVIEW

from a 'First Timers' Perspective

By: *Daniel Kaczoroski*



I

joined MPI at the end of February and I tried to figure out ways to be able to attend the MPI events that were scheduled. As many of us can attest to, sometimes making time for events outside of the ones that we plan, just doesn't happen. With that being said, the Golden Awards Gala was my first Wisconsin chapter MPI event that I had the pleasure of attending. I was excited and nervous all at the same time as I didn't know what to expect.



Entering an event of people that do what I do was literally invigorating! I did fret about what I was going to wear - I looked for a gold dress but most of them were kind of too risqué so I opted for a gold sequin tank top with my black dress pants & black blazer, a safe decision. I approached the registration table and was greeted by a familiar face, Ann Marie Hess from Visit Brookfield - I then felt a little less nervous. Once I was registered and entered the ballroom, we looked over all of the auction items (which I won the Cubs player photo, Go Cubs!) and then took our seats for dinner. Conversation was amazing and I met a few other "friends." In fact, I now have a connection to The Abbey Resort, Sharon Beyer, and we have a date planned to reconnect in September.





The presentation was great. I find it amazing that MPI acknowledges the accomplishments and hard work of the members, of this chapter. The new president, Rebecca Staats, had a lot of nice and inspiring words to say about the chapter and all of the members and her dress was absolutely FANTASTIC! With that being said, I don't think there was a dry eye in the room when Maria Peot honored Amanda Ridout with presenting the Outstanding Leader Award to Amanda's husband, Brad Ridout. To witness this compassion & respect for a person - was completely surreal. And to be honest, it was at this moment that I realized that being a part of MPI is so much more than gaining networking friends.



Real friendships are made while being a member of MPI and especially the Wisconsin Chapter. Jennifer Mell's speech sealed the deal for me - she was so proud to be a part of this organization and completely humble accepting her award.

The after-glow was a fun time to socialize and a great time to be introduced to members that I hadn't met yet. After attending this event, I know that I made the right choice in joining MPI. Furthermore, I am so excited to attend more events with my fellow Meeting Planners, I am anxious to learn more about what MPI has to offer and so thrilled to attend the upcoming events that we have planned. ▲





MPI - WI Chapter Announces 2021-2022 Award Winners

By: Alison Hutchinson

The Wisconsin Chapter of Meeting Professionals International recently celebrated members, volunteers, and chapter accomplishments at their annual Gala held at the Hilton Appleton Paper Valley. Among the many honorees of the evening, **Jennifer Mell, CMP**, joined the **MPI-WISCONSIN HALL OF FAME**. The chapter honored Jen's years of dedication as a Board member, President, Supplier and Planner in our industry. Jen is Project Manager at Travel Leaders Corporate.

Maria Peot, CMP gave a touching tribute and presented the final **OUTSTANDING LEADER AWARD** to **Amanda Ridout**. On her behalf, husband **Brad Ridout** accepted.

JENNIFER MELL, CMP



MARIA PEOT & BRAD RIDOUT

The **MEETINGS INDUSTRY ADVOCATE AWARD** is presented to a member whose actions consistently promote the meetings industry in Wisconsin. Individuals that encourage growth and image of our industry through education, promotion or lobbying are eligible to be nominated for this award. The 2021-2022 recipient was **Marin Medema, CMP** of Osthoff Resort.

The **PRESIDENT'S AWARD** is presented by the Immediate Past President to a member who makes significant contributions to our chapter over the past term and stands out as a volunteer to support the chapter and our members. The 2021-2022 recipient was **Alison Hutchinson**, Fox Cities Convention & Visitors Bureau.

MARIN MEDEMA, CMP



ALISON HUTCHINSON



A **RISING STAR AWARD** is presented to a member who has been in MPI-Wisconsin for two years or less. Individuals that have contributed to the association, industry and community are eligible for this award. The 2021-2022 recipient was **Kortnee Carroll**, Kalahari Resorts.



KORTNEE CARROLL

The **SUPPLIER OF THE YEAR** and the **PLANNER OF THE YEAR** are each presented to a member who has been active within the chapter for two years or more. These awards are a tribute to the individual's service, accomplishments, recognition and contributions to our industries. The 2021-2022 Supplier of the Year was given to **Denise Humphrey** at Discover Green Bay. The 2021-2022 Planner of the Year was **Melissa Falendysz, CMP** of BCD Meetings & Events.



DENISE HUMPHREY

The **TEAM OF THE YEAR** award is designed to recognize an entire team's accomplishments, rather than exclusively rewarding one person for their efforts. A successful Team of the Year is a team that shares in the majority of the work and works together. The team has aligned and accomplished the goals that meet the chapter's goals. The 2021-2022 Team of the Year was **The Speaker Team**. Members of the team were **Carmen Smalley, CMP, CHE, Patrick Cavanaugh Ph.D., Judy Keller, and Danielle Ziegler, CMP, CVT, CNAP**.



THE SPEAKER TEAM



MELISSA FALENDYSZ, CMP

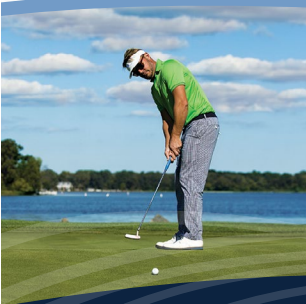
A NATURAL CHOICE YEAR-ROUND FOR WISCONSIN MEETINGS



EVERYTHING LAKESIDE

LODGING | SPA | GOLF | DINING

- ✦ 32,000 Square Feet of Unique Meeting Spaces - Many with Lake Views
- ✦ 271 Spacious Guest Rooms
- ✦ Award-Winning Culinary Team
- ✦ 76' Cruise Boat for Private Charters
- ✦ Custom Teambuilding Programs
- ✦ Corporate Spa Packages
- ✦ Calladora Spa & Majestic Oaks Golf Course
- ✦ Lake Tours, Boat Rentals, Watersports & more



LAKELAWN
RESORT

LAKELAWNRESORT.COM | 800.338.5253

2400 East Geneva Street, Delavan, Wisconsin



Back to table of contents



September Event Preview

BE A COMMUNICATION ROCKSTAR!

September MPI WI
Chapter Event

Thursday, September 22

Ingleside Hotel

Pewaukee

J

oin us September 22 at the Ingleside Hotel in Pewaukee with **Mimi Brown**. Mimi is from Michigan and presented two sessions at the 2018 GLES. She will be providing one of her most popular sessions, which is highly interactive discussing different personality types and trainings. She will relate the session to leadership, teams, customer service and sales so everyone will be able to have some takeaways no matter your profession.

Motivational Keynote Speaker, Mimi Brown works with individuals and organizations to amplify their communication, connection and confidence so they can make an influential impact on the world.

She mentors with passion, guiding her clients to effectively strengthen and elevate their leadership vision to new heights.

With over ten years of corporate training experience, a knack for making meaningful connections with audiences and an insatiable appetite for helping others maximize their potential, Mimi knows how to rock a platform, connect with a crowd and provide training so that others can effectively do the same.

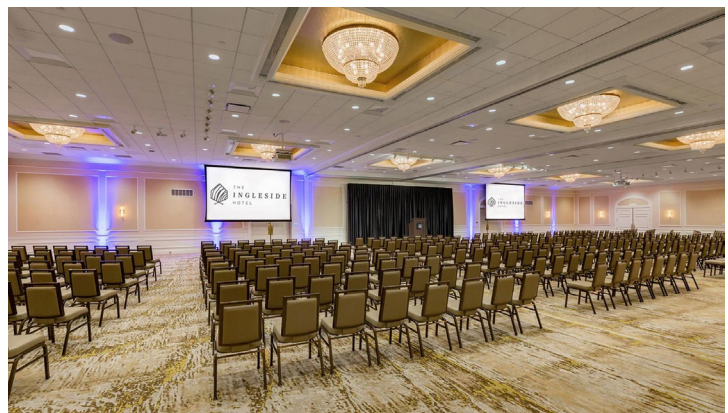
Mimi's down-to-earth humor compels audiences to laugh while they learn. She engages groups from the moment she steps in front of them and leaves them with empowering tools and focused mindsets that they will use long after the lights have gone out on the event. Mimi is passionate about people, leadership and successful businesses. She is especially inspired to help people take their careers – and themselves – to unprecedented levels.

Mimi's honors include being recognized as one of Michigan Oakland County Executive's Elite 40 Under 40, Ms. Michigan Plus America 2015, and a proud contestant on NBC's The Biggest Loser.

When not speaking or training, Mimi can be found creating delicious meals with chef and hubby Mr. Brown and bribing her snobby cat Kitty Brown with treats in exchange for snuggles. ▲



Motivational Keynote Speaker, Mimi Brown



FOOD FOR THOUGHT: SEPTEMBER EVENT



CHEF BRETT THE INGLESIDE HOTEL PEWAUKEE, WI



CHEF BRETT'S BROWNIES ~ 30 Years of Perfecting ~

2 1/3 cups Melted Butter
5 cups Sugar

Mix until Smooth

Add:

10 Eggs
1 2/3 cups Cocoa
2 1/3 cups Flour
1 t Salt
1 t Baking Powder heaping
1 2/3 T Vanilla
2 cups chips of your choice (Chef Brett's choice
butterscotch)
2 cups pretzels pieces (small to med smashed)

Mix

Bake 300 degrees for 40 min in 9x13 pan
Sprinkle with sea salt when cooling (Get crazy with
maybe a flavored sea salt like smoked or spicy)

Makes 25 Brownies

W

ith over 30 years of culinary exploration and experience, Chef Brett has established herself as a self-assured presence in the kitchen and

creative force. She loves pushing flavors, finding inspiration in the smallest detail, and thinks food should not only ignite our senses but capture an experience. Whether you're dining at Didi's Supper Club or attending an event at The Ingleside Hotel, food isn't just a secondary experience; it complements and excites, giving guests more to remember for years to come. ▲



October Event Preview

OCTOBER

MPI WI Chapter Event

Thursday, October 19

DoubleTree by Hilton
Milwaukee-Brookfield

Brookfield

J

oin us October 19th, 2022 at DoubleTree by Hilton Milwaukee-Brookfield for our October Education event.

Ann Kerian will be presenting ***Social Media & Kick Marketing into High Gear with Kinder Communication***

What we will learn

- How to recognize and utilize positive conversations
- How to clarify communication challenges with potential clients
- How to learn to make social media work for you

Ann Kerian spent more than 15 years motivation people through a camera lens. Now, she takes her talents to another level as an Executive Coach, Consultant, Motivational Speaker, Fundraiser, Recruiter and Author. Ann's a former award-winning Television News Anchor/Reporter. She's a member of the prestigious National Speakers Association. Ann was born and raised in North Dakota, where she began her career. Her current client list ranges from hockey moms to Fortune 500 companies. Ann has three sons, two dogs, one husband and now lives in Southern California. ▀



Motivational Keynote Speaker, Ann Kerian



MILWAUKEE-BROOKFIELD

FOOD FOR THOUGHT: OCTOBER EVENT



**EXECUTIVE CHEF
JANICE L HIBBLER**
DOUBLETREE BROOKFIELD
Brookfield, WI



CHEF JANICE'S CHILI LIME BRUSCHETTA

Tajin Clasico Chile Lime Seasoning
Roma Tomatoes, diced
Garlic Cloves, minced
Fresh Basil, chopped
Kosher Salt
Extra-Virgin Olive Oil
Balsamic Vinegar
Red Pepper Flakes
Large Baguette, sliced about ½ inch thick

*She will not share measurements
because it is a "secret" recipe*

In a large bowl, add diced Roma tomatoes, chopped fresh basil, balsamic vinegar, salt, red pepper flakes, and Tajin seasoning. Mix together.

Add minced garlic and extra-virgin olive oil and mix together again. Let mixture stand for 30 minutes.

Brush baguette slices with extra-virgin olive oil and place on baking sheet. Bake at 400 degrees for 10 minutes or until the baguettes start to brown. Remove from oven and allow to cool to room temperature. Top with tomato mix and serve.

I started my career in St Louis, MO, at the Clubhouse Inn Westport Plaza after attending Forest Park Culinary School. The kitchen was still being built, so I stepped in as Housekeeping Manager until they were able to fill that position six months later. I was then asked to assist at the front desk until the department was staffed. By then, the kitchen was ready to open and I was placed in charge of operating the breakfast as well as daily grill house meals.

In 2000, I was asked to move to Milwaukee and became the Sous Chef at the Wyndham Garden Hotel in Brookfield (now known as the Doubletree). My responsibilities included preparing food for banquets and food items used on our cook-to-order line, as well as creating specialty menu items and updating the existing pricing. I soon was promoted to the Executive Chef position. Not long after the promotion, I was asked to travel and assist at a restaurant located at the Sheraton Kansas City Airport, called Tanners. I assisted in opening this restaurant by implementing the general procedures for the kitchen operation and training their staff on these procedures before returning back to Wisconsin.

I have remained at the Doubletree in Brookfield (the hotel changed brands from the Wyndam Garden to Doubletree in 2004) and have continued to develop my skills to offer elegant cuisine for weddings, brunches, and special corporate events (amongst countless other types of events and parties). It has been a pleasure to be a part of the organization and the changes that have occurred at the hotel for over 22 years. ▲





2022

GREAT LAKES EDUCATION SUMMIT

**2022 MPI GLES
Registration is Open!**
*Take advantage of discounted
rates and register today.*
SUN, NOV 13 – TUE, NOV 15, 2022
[REGISTER HERE!](#)

We are putting the Grand in Lake Geneva!

By: Tamara P. Jesswein, CMP, VEMM, Wisconsin Co-Chair, GLES Committee

The Great Lakes Education Summit, our tri-chapter event with Michigan, Indiana and Wisconsin is quickly approaching, this year we meet in beautiful Lake Geneva, and our speaker line-up is starting to look FABULOUS!

- **CJ MCCLANAHAN** presents *Time Management – Time is More Than Money*

CJ details proven strategies that help the modern professional regain a reasonable workload and lifestyle without sacrificing achievement.

- **NANCY SNOWDEN** presents *Meetings Outlook: Future Predictions for the Business of Meetings*

Deep dive into MPI’s most recent Meetings Outlook research, then discuss the trends that are most affecting you and your peers.

Interested in becoming a Strategic Partner for this year’s event? With over \$242.8 million in buying power between the three host chapters alone, showcasing your organization as a 2022 GLES Partner provides marketing and networking for your organization while support the educational opportunities provided each year to all GLES attendees.

Whether you attend as a Strategic Partner or an Exhibitor, GLES provides dedicated, nearby exhibitor space with intentional networking for you to build your client base with both new and existing guests in attendance.

Ready to get started? Contact Kathleen Headington, (kheadington@visitindy.com), for more information, or click the link below to visit the website and register your interest today!

[Click here](#) for more information about Strategic Partnerships and Exhibitor Opportunities

You can use the link below to book your hotel room by October 24 at the beautiful Grand Geneva Resort & Spa. With two golf courses, a spa and salon, a variety of restaurants onsite and a beautiful landscape of rolling hills and pristine views – you won’t want to miss experiencing this AAA Four-Diamond resort in Wisconsin!

[Click here](#) to make your hotel reservation by October 24, 2022.

Come early and join your fellow GLES attendees on the MPI GLES Spirits Tour on Saturday, November 12 from 1-6 pm to sample five of Lake Geneva area’s finest breweries, wineries and distilleries. Enjoy scooter tours, outdoor activities, theatre, candle making, shopping and more! Sunday we’ll kick off the event with a fall color tour on Lake Geneva Cruise line, after which we will enjoy a grand evening at the Riviera Ballroom. Many more surprises to come! ▲

[GLES WEBSITE LINK](#)



Meetings That Make a Splash!



Why Meet in Wisconsin Dells?

If you want your meeting to make a splash, bring everyone together in “The Waterpark Capital of the World!®” We have what you need, like 500,000 square feet of meeting space and 8,000 guest rooms. Plus, we have what you and your attendees want, like award-winning spas, championship golf, nightlife, over 90 attractions, and more than 100 restaurants.

How to Get Here

With nearby airports in Madison and Milwaukee and an Amtrak station located downtown, it's easy for your attendees to travel to Wisconsin Dells.

Ready to Jump In?

There is an entire team dedicated to helping you plan your meeting or convention. Get in touch at (888) 339-3822.

MeetInTheDells.com



Venues That Impress

Wisconsin Dells is home to a number of world-class venues, giving you plenty of options to choose from for your event.

📍 **Sundara Inn & Spa:** Set in serene wilderness, Sundara is an adult-only, award-winning inn and spa ideal for small group retreats, end-of-the-year planning, and off-site brainstorming sessions. Your group can relax, convene, dine, and partake in activities including yoga, guided hikes, and kitchen demos with an in-house chef.

📍 **Trappers Turn Golf Club:** This course offers 27 holes of championship golf by renowned-designer Roger Packard, elegant year-round dining, and a beautiful event space. An award-winning staff is around to serve your group and make it an experience to remember.

📍 **Cold Water Canyon Pavilion:** Nestled amongst beautiful sandstone bluffs, you'll find Cold Water Canyon Pavilion's 700-square foot facility, complete with a bar, fireplace, and large seating area.

📍 **Riverfront Terrace:** Host your outdoor event with a view of the Wisconsin River at Riverfront Terrace's private space. The area fits 100 people and is complete with a bar, awning, and the option to set up a tent.

📍 **Vennebu Hill Conference Facility:** Located just minutes from Wisconsin Dells, Vennebu Hill is a secluded, year-round event facility that offers two main indoor event spaces that seat up to 335 people.

📍 **The Swan Barn Door:** Perfect for meetings, team-building activities, luncheons and more, this charming venue is easily customizable to meet your needs.

📍 **Wizard Quest:** A great team-building activity, Wizard Quest helps exercise your group's teambuilding ability while having a blast in the facility's 30,000 square foot, fantasy-themed labyrinth.

📍 **Palace Theater:** The Palace Theater's seven-tiered auditorium, large main floor, and elegant lobby are available for speaker and presentation events and offer audio/visual equipment, specialized lighting and more.



SUMMER SOCIAL AT SERENDIPITY LABS

SUMMER SOCIAL RECAP

By: Shannon Timmerman, CMP



On Thursday, July 21st, we had the pleasure of gathering with our MPI – WI friends, and meeting some new Madison area Planners, and hopefully potential new members! Our Membership team was onsite to answer any questions about becoming an MPI member, and to offer up a friendly welcome.

Serendipity Labs was our gracious host, and they treated us to some snacks and beverages. **Diana Decker**, previously of Serendipity Labs, offered up tours of their amazing flex office, coworking and meeting space, while **Shannon Timmerman, CMP** greeted guests with a little Hawaiian flair! Although we were not outside for this event, (which worked out well since it was 90+ degrees!) their floor to ceiling windows and natural light created a fun and festive atmosphere.

This was our first Summer Social event since Covid-19, and it was a success! It was so great to see so many faces during the long summer apart from one another, and meeting new friends. We hope to be able to bring back some Summer Socials in other areas next year, because we all know May to August is entirely too long without an MPI fix! Aloha! ▲



Ann Marie Hess

Special Education Projects Director

By: Ed Buchner



A veteran of the hotel industry for 21 years, Ann Marie Hess became the Director of Sales member of the Visit Brookfield team. This last year Ann Marie joined the Gala team. Her efforts brought in so many donated items that catapulted the Golden Gala into fundraising status that hasn't been seen since before the pandemic.

A Cubs fan from Chicago she enjoys going to the border battle games, raising her daughters in Brookfield, and spending time with her husband and her dog, Cassidy. You can always find her with a big grin on her face and excitement in her eyes for the meeting planning profession. Make sure you talk to her about the Brookfield Conference Center at the next meeting you attend!

Thank you so much for all that you do for MPI-WI Ann Marie!

Tamara Jesswein,

CMP, VEMM

HID Global

By: Shannon Timmerman, CMP



Tamara joined MPI back in 2005 as a Supplier member. In her 17 years in MPI, Tamara has held many volunteer roles in the chapter, and also served on the Board of Directors. Twice. Her board roles included time in many areas, and most recently, the Office of the President, serving as the MPI-WI Chapter President in 2018-2019.

Since her time on the Board, Tamara has made the commitment to a three year term of serving as Co-Chair for GLES, along with representatives from Michigan and Indiana. This year, Wisconsin will be the host of GLES in November, so she has been busy preparing for a fantastic event in Lake Geneva!

Tamara and her husband, Ron, recently left the city life, and moved into their forever home in Montello, on White Lake. They spent their first year remodeling, and now they enjoy entertaining family and friends on the lake, spending time with their children and grandchildren, and their cats, Tiki and Tommy.

Thank you Tamara, for all that you continue to do for our chapter!

MPI WISCONSIN

ANNIVERSARIES

CELEBRATE!

Congratulations to those members celebrating a milestone anniversary in September & October!
Congratulations!

20 YEAR

TODD WESSING

5 YEAR

JODI GOLDBECK, CMP

NEW MEMBERS



Welcome to our new members!

SALEMA EL-SHAFEI
The Wellness Way

ANGELA JELLUM
Ariens Co

MARIE JOHNSON, CMP
Meetings & Incentives Worldwide, Inc.

KRISTIN ESPELIEN
Dakota Supply Group

LINDSEY CONKLIN
UW Extended Campus

KOZETTE ROSENTHAL
Best Western Premier Park Hotel

KARA JOHNSON
First Business Bank

KELLY HOGLUND
Lesaffre Corporation

SARAH KRAHN

PATRICK SNYDER



Maybe it's meeting in one of our conference spaces, or enjoying our 70 restaurants and cafes. Network with new friends over beer and cheese tastings at our award-winning brewery, or take the free trolley downtown to shop or dine.

It's the middle things.

66,000 sq. ft. of Conference Space

1,150 Hotel Rooms

Indoor & Outdoor Activities

VISIT
Middleton
meetinmiddleton.com

Back to table of contents



DESTINATION



LAKE WINNEBAGO REGION

C'mon in.



Hello, I am Darcie, and these are my dogs. I just thought this was a fun way to get your attention, and now that I have it, I would like to give you my TOP FOUR unbreakable rules as a CVB salesperson...

1. I understand travel for meetings is going to be less frequent, so in-person gatherings must be more meaningful, memorable, impactful and be of great value and have great service...we got this!
2. I will always work to connect the dots for the planner — I will be your Fond du Lac and Waupun Sherpa.
3. The answer is always “YES” — especially at happy hour.
4. I will work to alleviate the struggles and maximize the value — the competition is tough in your field and mine, so let's shine together.
5. I will be your “meetings tailor”, no off-the-rack meetings here, only bespoke events — you tell me if you want a FAM, you tell me what incentives are impactful, and of course you tell me how to customize your event.

Ok so maybe that was FIVE unbreakable rules, so to my planner friends, if you are looking for a partner-in-crime to pull off an awesome event, you've found her, me, Darcie Holte.

FDLMEETINGS.COM
920-923-3010
DHOLTE@FDL.COM

Back to table of contents



Board Member Profile: Lindsey Hess, CMP



Lindsey Hess, CMP

Director of Monthly Programming

Employer: Wisconsin Cheese Makers Association

Job Title: Programs & Office Coordinator

Tell us about the company you work for and/or your position: The Wisconsin Cheese Makers Association serves dairy processors, and their industry supplier partners as a strong policy advocate, networking hub, and trusted source of education and information. WCMA proudly hosts the renowned U.S. and World Championship Cheese Contests, as well as CheeseExpo and CheeseCon. I support seven staff with event planning, trainings, finances, admin and anything else that is thrown my way. I work with a really great team who is really supportive of each other. Also, working with cheese makers and getting cheese throughout the year is quite wonderful!

How long have you been in the meetings industry?: 12 years

Tell us a few things about your role on our Chapter Board: I oversee the coordination for all of the monthly educational meetings. I recruit volunteers to take the lead and assist on our monthly chapter meetings. Making sure meeting logistics are taken care of. I facilitate the registration process and assist the VP of Education with speaker selection and contracting.

What drew you to serve on our Chapter Board? I have been asked to serve on the board for a few years now and I couldn't commit. Now that my daughter has graduated, I have found myself with a bit more free time. The longer I am with MPI, the more I see everyone as family. This is truly an amazing group. I hope I can make a great impact on new members joining this group like board members did for me.

What do you enjoy about your board service, and what are you learning? I enjoy seeing friends monthly and learning from them. Picking up tips and tricks on planning events. I also have a great team showing me the ways as a first-time board member. Makes me appreciate past board members and all the wonderful volunteers even more when I see what it takes to put on our events.

What are your hobbies and interests? I love Zumba, paddleboarding, hiking, traveling, and walking a lot of miles. I have two close friends who I have walked a full marathon with also many races which were 5k/10/half marathon walks. We are always looking for new walking adventures. I also love spending time with our families and hanging out with my two nieces and four nephews.

Tell us about your family: My husband and I live in Madison with our daughter Hayden, a mini lop bunny, Twix and Hayden's kitty, Nox. Ryan and I have been married almost 13 years. Our families live 2-3 hours away, so we tend to travel often to spend time with them.

Favorite song/band/artist/movie/book: I really like all music – Journey, Daddy Yankee, Disney, Country – old and new, 80s is always good. Just depends on my mood. My favorite movies are *Forgetting Sarah Marshall*, *Dirty Dancing* & *Pretty Woman*. I tend to lean towards romance books or fantasy. Can't go wrong with Harry Potter, witches and wizards!

Person you admire and why: My husband Ryan. He is calm, supportive and makes me want to be a better person.

What is something that is still on your bucket list? More traveling! Ireland, Switzerland and New Zealand are 3 places I am so excited to visit some day!

Tell us your words to live by or share a favorite quote: I have learned you need to laugh every day, even on stressful days. Life is too short to stress the small things.





Kalahari

RESORTS &
CONVENTIONS

WISCONSIN DELLS, WI

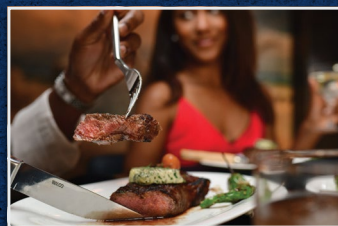


UNPARALLELED MEETINGS WITH UNIQUE OPTIONS FOR ALL

Kalahari Resorts & Conventions is the perfect place to hold your meeting. Big or small, we'll make sure your attendees are taken care of. Our talented culinary team is ready to create a tailored dining experience to delight. With a full-service spa, a new piano bar and world-class dining options, Kalahari has everything you need to ensure your event is successful.

- > 212,000 square feet of flexible event space
- > Two hours or less from major cities
- > Diverse team-building options available on-site
- > Eight food & beverage options
- > 794 guest rooms & suites

KalahariMeetings.com | Call 855-411-4605 to learn more | Follow Us:    | ©2022 Kalahari Management Co. LLC



Supplier Profile: Matt Bosen



MATTHEW BOSEN

Director of Sales and Servicing
Visit Beloit

How many years have you been in the industry? Nine years with the CVB, 16 years in hospitality.

What is your favorite thing about being an MPI-WI member? I look forward to connecting with industry partners across the state to create the best experiences possible for visitors to Wisconsin, regardless of their destination.

Things unique to your company: 1) As a border city, we promote locations/communities in both Wisconsin and Illinois; 2) Our organization was originally created to run a concert series in Beloit; 3) Our new office is located in a church that was founded in 1914.

Tell us about your family: I married my wife, Kelly, on February 2nd this year and we live in Beloit with our rescued lab-mix, Astro.

What are your hobbies and interests? I am an avid baseball fan, enjoy spending time in the water (beach, lake, pool, etc.), and love traveling with my wife.

Tell us about who you admire most and why: It is hard to narrow this down to one person. I have come across so many people in my life worthy of admiration for a wide variety of reasons. I wouldn't be the person I am today without every interaction I have had to this point.

Favorite song/band/artist/movie/book: I really enjoyed the *Friday Night Lights* book and movie. Both offer a different experience but they are both rewarding in their own way.

Favorite quote: "Never allow the fear of striking out keep you from playing the game." – Babe Ruth

WHO'S **IN THE** NEWS

Compiled by Kortnee Carroll

1 NICOLE SLEMIN started a new position as the Multi-Property Director of sales at the Destination Geneva National & The Ridge Hotel.



Best of luck to you on your new adventure, Nicole!

2 Congratulations are in order for **DAVID HELGESON, CMP**, who has been promoted to General Manager of the Best Western Premier Waterfront Hotel & Convention Center! After 10 years at the hotel as the Director of Sales, he will begin this new position in mid-September.



Cheers to your success, David!

3 REBECCA STAATS not only is training for her first Half-Marathon in August, but was featured in *Wisconsin Meetings Magazine* where she talks about Understanding the Big Picture on page 34. View here. Rebecca was also featured in *MPI Global's TV Spot*. MPI chapter presidents discuss inspiration and plans to grow membership and attendance. -MPItv [Watch here.](#)



Way to go Rebecca! We are cheering for you!

NOTE: if you have any news to share in this column, please contact Kortnee Carroll, Director - Publications & Community Outreach, kocarroll@kalahariresorts.com.

4 LINDSEY HESS is training for her first half-marathon at the end of September and her daughter just moved out into her first apartment!



We are cheering for you, Lindsey and hope that you're enjoying a quieter home.

5 CHRISTOPHER & HEATHER DYER'S daughter, **EMMA**, is off to college at Aurora University to play college soccer and is majoring in Computer Science.



Way to go, Emma!

6 BETH SCHNABEL is training for a half marathon at Disney! She will be doing the Walt Disney World Wine & Dine half in November.



We are cheering for you Beth!

7 ELIZABETH POH welcomed home her new baby girl. Mom, dad, and big sister are all doing well and loving being a family of four!



Congratulations Elizabeth! She is beautiful!





CARRIE WUNDERLICH

Senior Meeting Planner
State Bar of Wisconsin

Tell us about your company and/or

position: The State Bar of Wisconsin is a mandatory professional association, created by the Wisconsin Supreme Court, for all attorneys who hold a Wisconsin law license. With more than 25,000 members, the State Bar aids the courts in improving the administration of justice, provides continuing legal education and other services for its members, supports the education of law students, and educates the public about the legal system. The State Bar of Wisconsin also provides public services, including attorney referrals, public education and reduced-fee legal assistance for low-income state residents.

How long have you been in the meetings industry? I started in hotels in the mid-90's. I worked in various positions in the hotel business from server, bartender, banquet manager, sales manager, wedding coordinator and convention services manager. When we moved back to Madison in 2016 from Chicago I realized I was ready for a change. I started working as a meeting planner at the State Bar of Wisconsin.

What drew you to become a planner? When I worked in Chicago as a convention services manager, I worked with some fantastic meeting planners. They would share with me their highs and lows. They also gave me many tips along the way. I realized when I moved to Wisconsin it was the right move for me and I was ready to "switch sides." It has been a rewarding and positive change.

What do you like most about being a member of MPI? Hands down, the people! I have met some wonderful people through the Wisconsin Chapter.

What was your favorite team or project you have worked on for MPI? My favorite team was the Trivia Night Team!

Tell us about your family: I grew up in a small town in Iowa. My husband, Chad, is from Appleton. He runs The Bar Next Door in Windsor, Wisconsin. We have a 15-year-old daughter, Emma, who is very active in basketball & softball. We also have a 10-year-old dog, named Madison, named after the city my husband and I met in.

What are your hobbies and interests? My husband and I love trying new restaurants. I enjoy baking, especially during the holidays, reading and traveling.

Favorite movie/book: My favorite genre of books are WWII fiction and spy novels. We are also fans of the Marvel movies.

What is something that is still on your bucket list? Taking a trip to Italy!

Tell us the words you live by or share a favorite quote: *You will face many defeats in life, but never let yourself be defeated.* — Maya Angelou





CONNECT. COLLABORATE. CELEBRATE.

Brookfield is Wisconsin's premier event destination!

Over 235,000 square feet of meeting space.
16 hotels and more than 2,500 sleeping rooms available,
3 million square feet of shopping and 150 restaurants,
Located on I-94 between Madison and Milwaukee.

Now Open: The Brookfield Conference Center!

Two completely modular ballrooms- 18,000 sq ft and 6,000 sq ft,
Seasonal outdoor green space and glass atrium- perfect for smaller gatherings,
Onsite catering and beverage service,
Attached Hilton Garden Inn and plenty of free parking.

262-789-0220 www.visitbrookfield.com



Enhance your meeting planning career with the

MPI ACADEMY

With hundreds of hours of free education for MPI members, the MPI Academy is your one-stop shop for meeting planning and event industry skills training, CE credits and certificate courses. Featuring online and in-person classes and webinars, it's the perfect resource for the job you have - or the job you want.

CERTIFICATE COURSES: <https://www.mpi.org/education>

SAVE THE DATE

2022-2023 CHAPTER EVENTS

SEPTEMBER 22

EDUCATION EVENT — The Ingleside Hotel, Pewaukee

OCTOBER 20

BREAKFAST EVENT — DoubleTree by Hilton Milwaukee-Brookfield, Brookfield

NOVEMBER 13 – 15

GREAT LAKES EDUCATION SUMMIT — Grand Geneva Resort & Spa, Lake Geneva

JANUARY 20

Chula Vista Resort, Wisconsin Dells

FEBRUARY 23

Embassy Suites, Brookfield

APRIL 12 – 13

TRIVIA & SPRING EDUCATION DAY — Madison Concourse, Madison

MAY – TBD

AUGUST – TBD

SEPTEMBER 14

Best Western Premier Waterfront Hotel, Oshkosh

OCTOBER 19

Sentry World, Stevens Point

